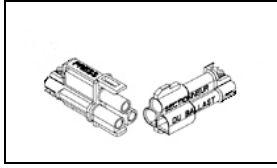


2008152-1 Product Details



2008152-1

TE Internal Number: 2008152-1



Active

Ballast Products

 Always EU RoHS/ELV Compliant (Statement of Compliance)

Product Highlights:

- Connector
- Wire-to-Wire
- Applies To Wire/Cable
- Contact Current Rating, Max. = 5 A
- Operating Voltage = 600 VAC

Documentation & Additional Information

Product Drawings:

- [ASSEMBLY, MATED PAIR, 3 POSITION PLUG AND RECEPTACLE...](#) (PDF, English)

Catalog Pages/Data Sheets:

- None Available

Product Specifications:

- [LIGHT-N-LOK* Connector](#) (PDF, English)

Application Specifications:

- [LIGHT-N-LOK Connectors](#) (PDF, English)

Instruction Sheets:

- [LIGHT-N-LOK Connectors](#) (PDF, English)

CAD Files: (CAD Format & Compression Information)

- [2D Drawing](#) (DXF, Version B2)
- [3D Model](#) (IGES, Version B2)
- [3D Model](#) (STEP, Version B2)

Related Products:

- [Tooling](#)

Product Features (Please use the Product Drawing for all design activity)

Product Type Features:

- Product Type = Connector
- Connector Type = Housing
- Strain Relief = With
- Sealed = No
- Wire/Cable Type = Discrete Wire
- Termination Method to Wire/Cable = Poke-In
- Make First / Break Last = No

Mechanical Attachment:

- Mating Retention Type = Latching

Electrical Characteristics:

- Contact Current Rating, Max. (A) = 5
- Operating Voltage (VAC) = 600
- Operating Voltage (VDC) = 600

Termination Features:

- Wire/Cable Size (AWG) = 18
- Tool-less Wire Termination = Yes

Dimensions:

- Length (X-Axis) (mm [in]) = 61.47 [2.420]
- Width (Z-Axis) (mm [in]) = 13.92 [0.548]
- Profile Height (Y-Axis) (mm [in]) = 21.21 [0.835]
- Post-Mating Assembly Measurement (mm [in]) = 61.47 [2.42]
- Pass-Through Hole Size (mm [in]) = 22.225 [.875]

Body Features:

- Mating Retention = With

Contact Features:

- Contact Type = Pin/Socket
- Contact Plating, Mating Area, Material = Matte Tin
- Contact Plating, Mating Area, Thickness (μm [μin]) = 2 [78.74]
- Stamped and Formed = Yes

Configuration Features:

- Number of Positions = 3
- Number of Rows = 2
- Preloaded = Yes
- Pre-Designed Cables Available = Yes

Industry Standards:

- Agency/Standard = CSA, UL
- Agency/Standard Number = C22.2 No. 182.3, UL 2459
- RoHS/ELV Compliance = RoHS compliant, ELV compliant
- Lead Free Solder Processes = Not relevant for lead free process
- RoHS/ELV Compliance History = Always was RoHS compliant

Identification Marking:

- Circuit Identification Feature = With

Environmental:

- Operating Temperature ($^{\circ}\text{C}$ [$^{\circ}\text{F}$]) = -40 - +95 [-40 - +203]

Conditions for Usage:

- Applies To = Wire/Cable
- Accepts Wire Insulation Diameter, Range (mm [in]) = 2.18 [0.086]
- Glow Wire Rating = Standard Part - Not Glow Wire
- UV Exposure Rated = No

Operation/Application:

- Application Use = Wire-to-Wire

Packaging Features:

- Packaging Method = Bulk

Other:

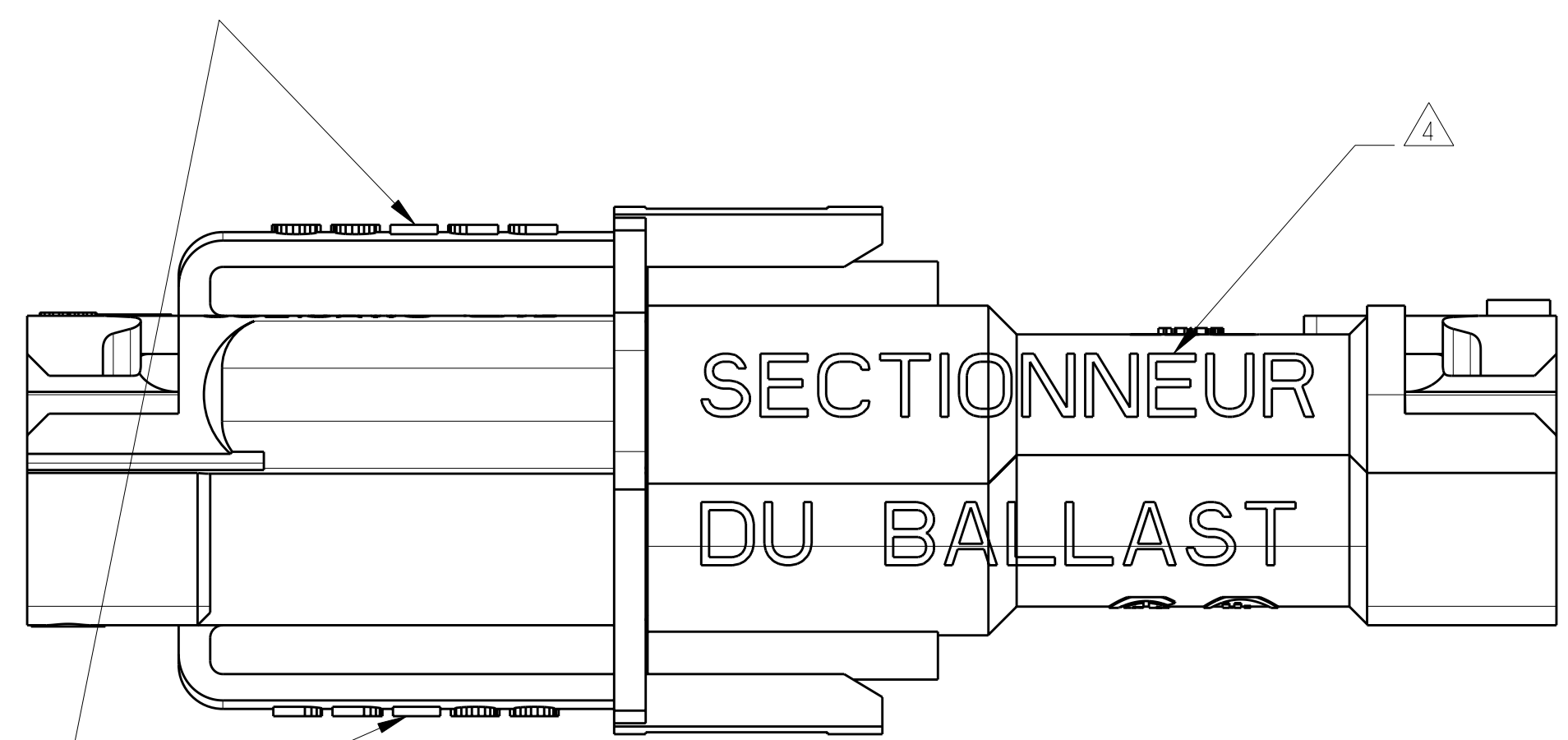
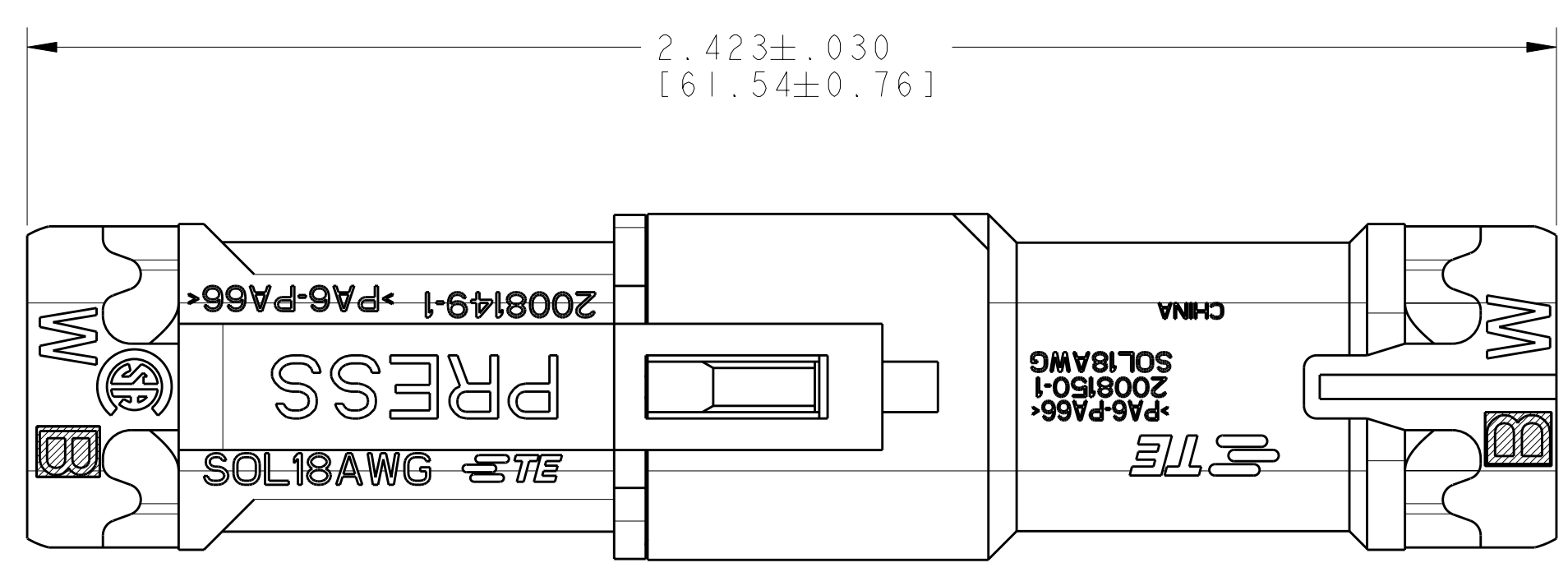
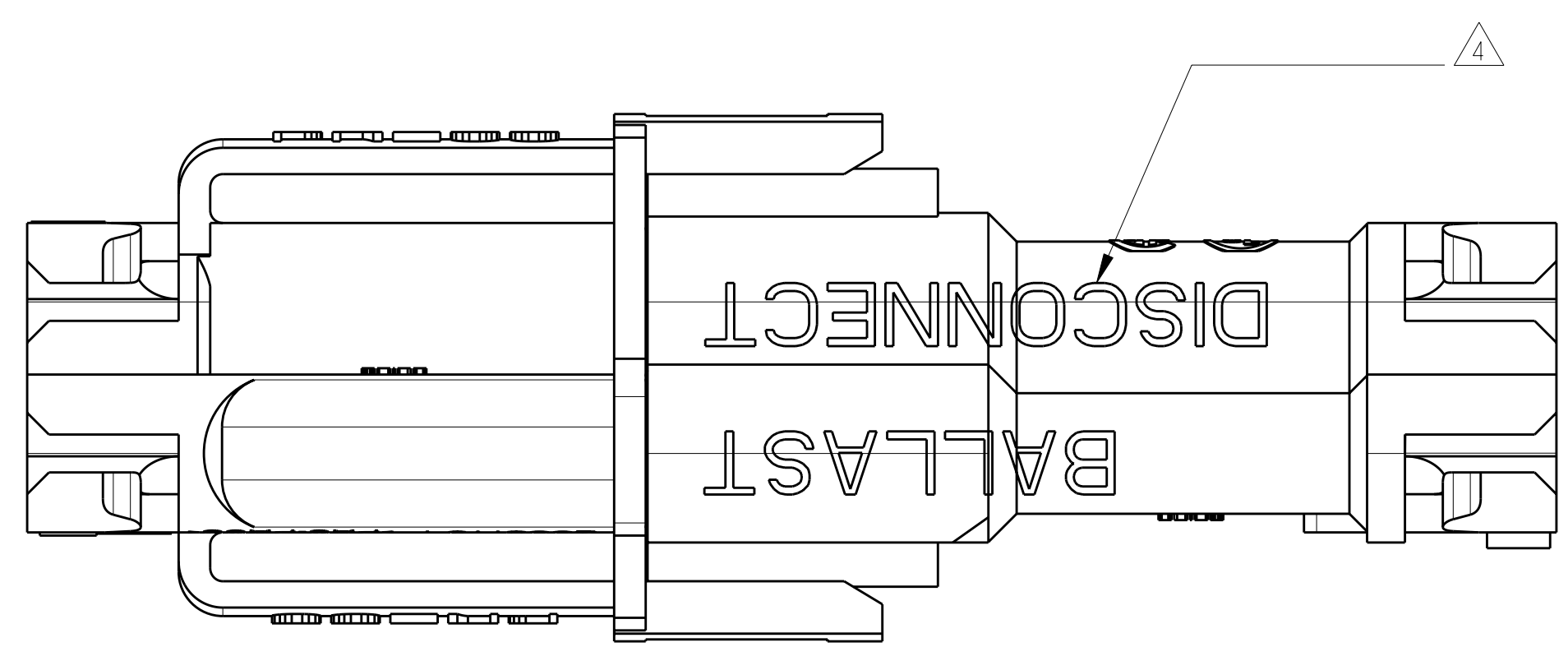
- Brand = TE Connectivity

• Stamped and Formed = Yes

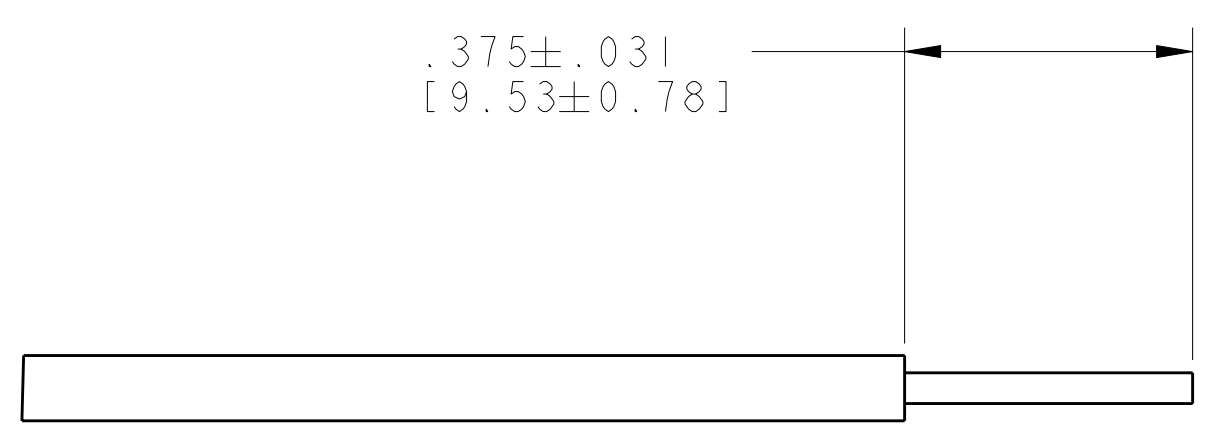
Housing Features:

- Connector Style = Plug/Receptacle
- Mating Alignment = With
- Housing Material = Polyamide
- Housing Color = Natural
- UL Flammability Rating = UL 94V-0

LOC	DIST	REV	DATE	BY	APPD
		B2	27FEB2009	HMR	DD
		B3	18DEC2011	HVG	DD



PRESS TO RELEASE



RECOMMENDED WIRE STRIP

△ MATERIAL:
 HOUSINGS: POLYAMIDE, COLOR: NATURAL
 CONTACTS: PHOSPHOR BRONZE
 INK: BLACK

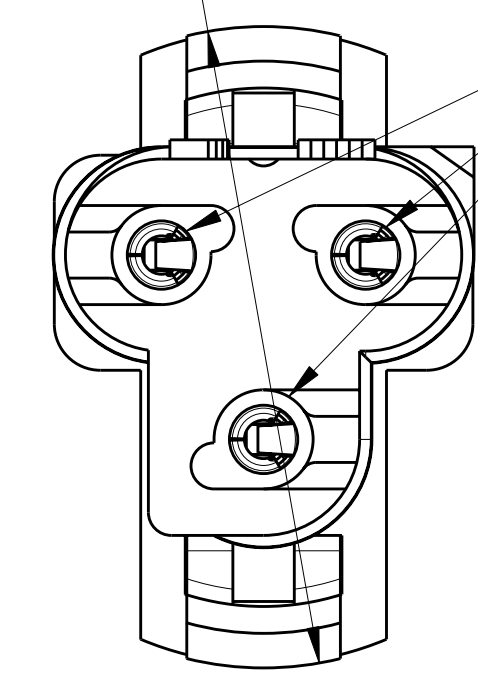
△ FINISH:
 CONTACTS: TIN PLATED

3. SEE INSTRUCTION SHEET 408-10154

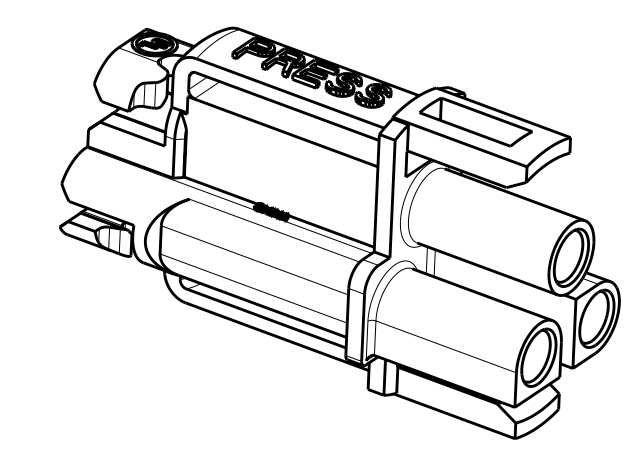
△ SIDES MAY BE REVERSED

△ MATERIAL:
 HOUSING: POLYAMIDE, COLOR: ORANGE,
 CONTACT: PHOS BRONZE
 INK: BLACK

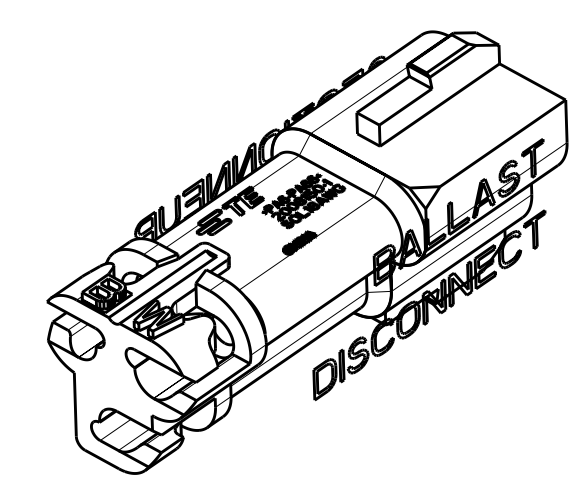
∅.835 ± 0.010
 [21.21 ± 0.25]



ACCEPTS 18 AWG SOLID WIRE
 WITH .086 [2.18] MAX INSULATION DIAMETER
 BOTH CONNECTORS



PLUG CONNECTOR ASSEMBLY



RECEPTACLE CONNECTOR ASSEMBLY

△	2008152-2
△	2008152-1
MATERIAL	PART NUMBER

THIS DRAWING IS A CONTROLLED DOCUMENT.		OWN: C. DAILY 23APR2007	NAME: ASSEMBLY, MATED PAIR, 3 POSITION PLUG AND RECEPTACLE PT, LIGHT-N-LOK	
DIMENSIONS: IN		CHK: J. LANDIS 23APR2007	PRODUCT SPEC: 108-2275	
TOLERANCES UNLESS OTHERWISE SPECIFIED:		APVD:	APPLICATION SPEC: 114-13207	
9 PLC ±		SIZE: A100779	CAGE CODE: C=2008152	
2 PLC ±		WEIGHT:	RESTRICTED TO:	
3 PLC ±		FINISH:	SCALE: 2:1 SHEET 1 OF 1 REV: B3	
4 PLC ±		CUSTOMER DRAWING		
ANGLES ±		TE Connectivity		
2		A100779C=2008152		