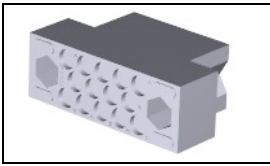


## 201298-1 Product Details

[Share](#) [Print](#) [Email](#)



**201298-1**

TE Internal Number: 201298-1  
 Active

[View 3D PDF](#)

### M Series Connectors

Always EU RoHS/ELV Compliant (Statement of Compliance)

#### Product Highlights:

- Product Series = M Series
- Connector
- Cable-to-Cable / Cable-to-Panel
- Applies To Panel, Applies To Wire/Cable
- Housing

[View all Features](#)

### Quick Links

- ▶ [Pricing & Availability](#)
- ▶ [Search for Tooling](#)
- ▶ [Product Feature Selector](#)
- ▶ [Contact Us About This Product](#)

[Add to My Part List](#)

[Request Sample](#)

[Find Similar Products](#)

[Buy Product](#)

### Documentation & Additional Information

#### Product Drawings:

- [BLOCK, FEMALE, 14 PLACE. MINIATURE RECTANGULAR, M SERIES \(PDF, English\)](#)

#### Catalog Pages/Data Sheets:

- [M\\_SERIES\\_PIN\\_AND\\_SOCKET\\_CONNECTORS \(PDF, English\)](#)

#### Product Specifications:

- None Available

#### Application Specifications:

- None Available

#### Instruction Sheets:

- [AMP 14 Position Series "M" -SM & "M" -DM Connectors \(PDF, English\)](#)
- [AMP\\* 6, 14, 20 AND 41 POSITION SERIES "M" CONNECTORS \(PDF, English\)](#)

#### CAD Files: (CAD Format & Compression Information)

- [2D Drawing \(DXF, Version S\)](#)
- [3D Model \(IGES, Version S\)](#)
- [3D Model \(STEP, Version S\)](#)

[List all Documents](#)

#### Additional Information:

- [Product Line Information](#)

#### Related Products:

- [Tooling](#)

### Product Features (Please use the Product Drawing for all design activity)

#### Product Type Features:

- Product Series = M Series
- [Product Type](#) = Connector
- Connector Type = Housing
- Strain Relief = Without
- Sealed = No

#### Mechanical Attachment:

- Panel Mount Retention = With
- Panel Mount Retention Type = Screw Mount

#### Dimensions:

- Length (X-Axis) (mm [in]) = 23.24 [0.915]
- Width (Z-Axis) (mm [in]) = 11.18 [0.440]
- Profile Height (Y-Axis) (mm [in]) = 31.75 [1.250]

#### Body Features:

- Mating Retention = Without

#### Contact Features:

- Contact Type = Socket

#### Housing Features:

- Connector Style = Receptacle
- Centerline (mm [in]) = 3.30 [0.129]
- [Housing Material](#) = Phenolic - GF
- Housing Color = Black
- Mating Alignment = Without
- UL Flammability Rating = UL 94V-0

#### Configuration Features:

- Number of Positions = 14

#### Industry Standards:

- [RoHS/ELV Compliance](#) = RoHS compliant, ELV compliant
- [Lead Free Solder Processes](#) = Wave solder capable to 240°C, Wave solder capable to 260°C, Wave solder capable to 265°C
- RoHS/ELV Compliance History = Always was RoHS compliant

#### Environmental:

- Operating Temperature (°C [°F]) = -55 - +150 [-67 - +302]

#### Conditions for Usage:

- Applies To = Panel, Wire/Cable
- For Use With = Plug Block

#### Operation/Application:

- Application Use = Cable-to-Cable / Cable-to-Panel

#### Packaging Features:

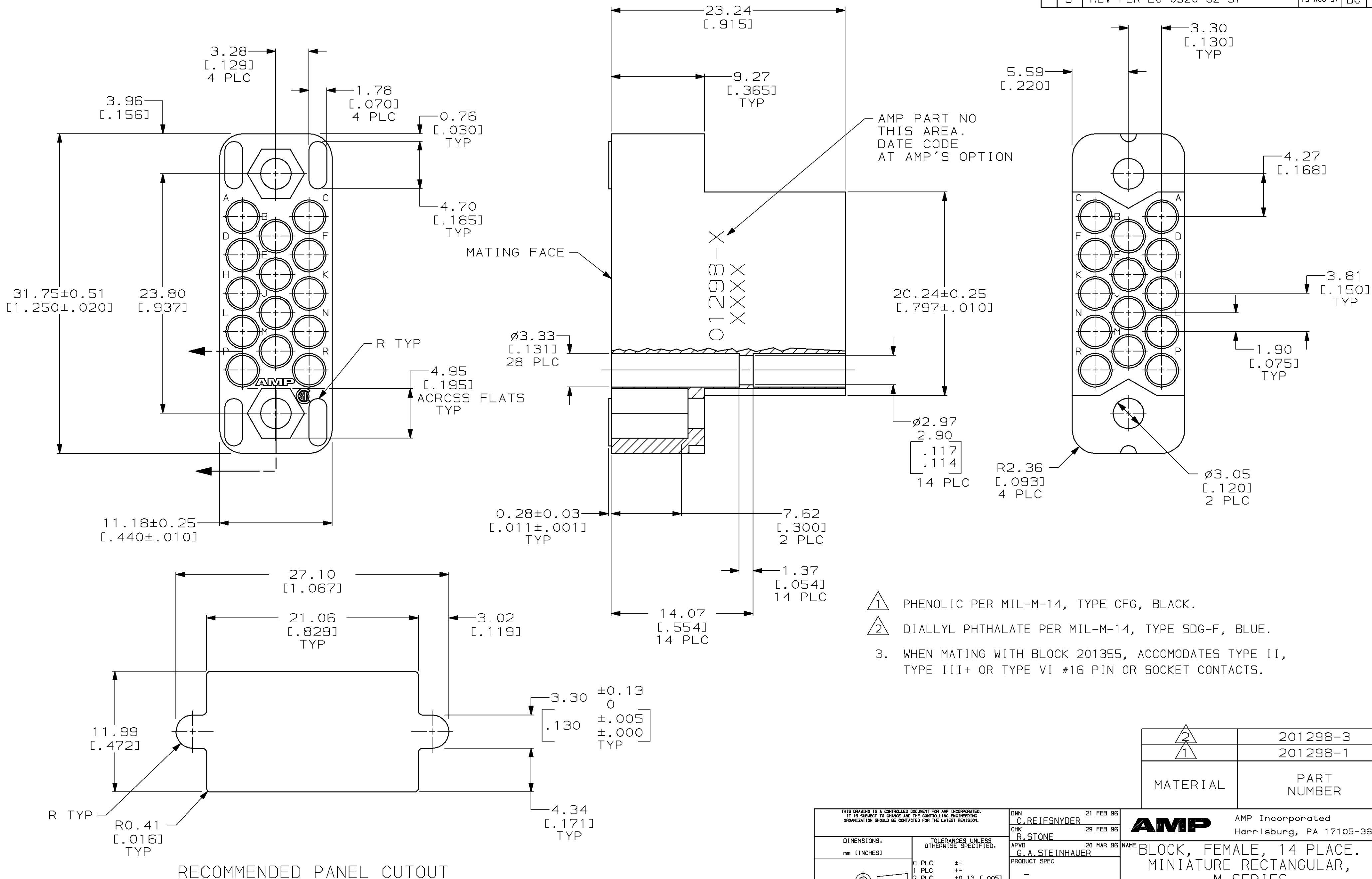
- Packaging Method = Carton
- Packaging Quantity = 261

#### Other:

- Brand = AMP
- Comment = Housing accepts type II, type III+ and Subminiature Coaxicon contacts.; Housing cavity identification are mirror image.; Pins and/or sockets may be used in any housing.

THIS DRAWING IS UNPUBLISHED. RELEASED FOR PUBLICATION  
 BY AMP INCORPORATED. ALL RIGHTS RESERVED.

Loc		DIST		REVISIONS			
P	LTR	DESCRIPTION	DATE	DWN	APVD		
	R	REDRAWN W/O CHANGE PER EC 0020-1300-95	21 FEB 96	-	-		
	S	REV PER EC 0320-82-97	13 AUG 97	BC	GS		



- 1 PHENOLIC PER MIL-M-14, TYPE CFG, BLACK.
- 2 DIALLYL PHTHALATE PER MIL-M-14, TYPE SDG-F, BLUE.
- 3. WHEN MATING WITH BLOCK 201355, ACCOMODATES TYPE II, TYPE III+ OR TYPE VI #16 PIN OR SOCKET CONTACTS.

2	201298-3
1	201298-1
MATERIAL	PART NUMBER

THIS DRAWING IS A CONTROLLED DOCUMENT FOR AMP INCORPORATED. IT IS SUBJECT TO CHANGE AND THE CONTROLLING ENGINEERING ORGANIZATION SHOULD BE CONTACTED FOR THE LATEST REVISION.		DWN C. REIFSNYDER 21 FEB 96	AMP Incorporated Harrisburg, PA 17105-3608
		CHK R. STONE 29 FEB 96	
DIMENSIONS: mm [INCHES]		APVD G. A. STEINHAUER 20 MAR 96	NAME BLOCK, FEMALE, 14 PLACE. MINIATURE RECTANGULAR, M SERIES
TOLERANCES UNLESS OTHERWISE SPECIFIED:		PRODUCT SPEC	
0 PLC ±-		APPLICATION SPEC	SIZE A2
1 PLC ±-		WEIGHT	CAGE CODE 00779
2 PLC ±0.13 [.005]		CUSTOMER DRAWING	DRAWING NO 201298
3 PLC ±-		SCALE 4:1	SHEET 1 OF 1
4 PLC ±-			REV 5
ANGLES ±-			
FINISH -			