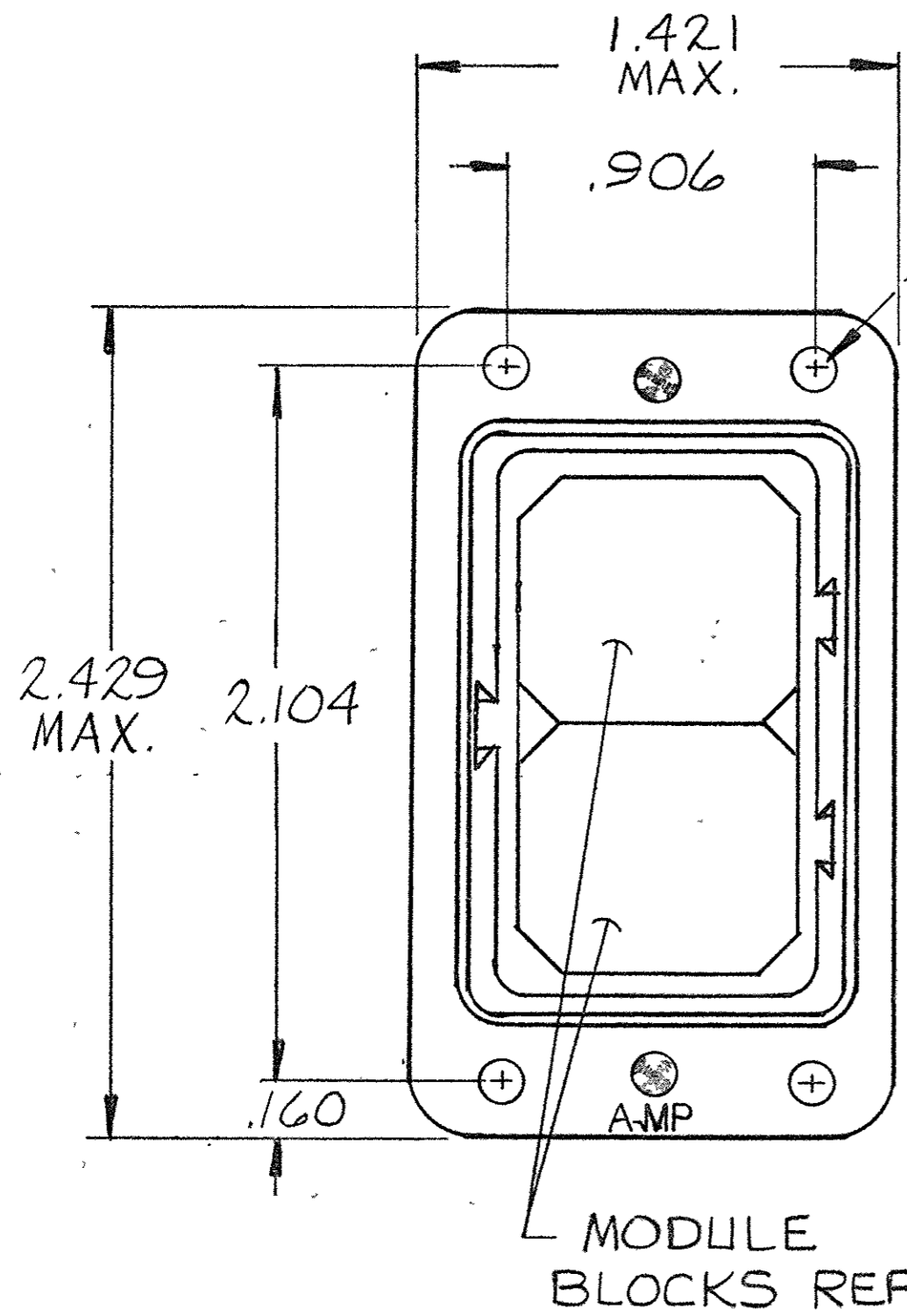


© 1964 BY AMP INCORPORATED. ALL RIGHTS RESERVED. AMP PRODUCTS COVERED BY PATENTS AND/OR PATENTS PENDING. APPROVED PER GOVT CONTRACT NO.

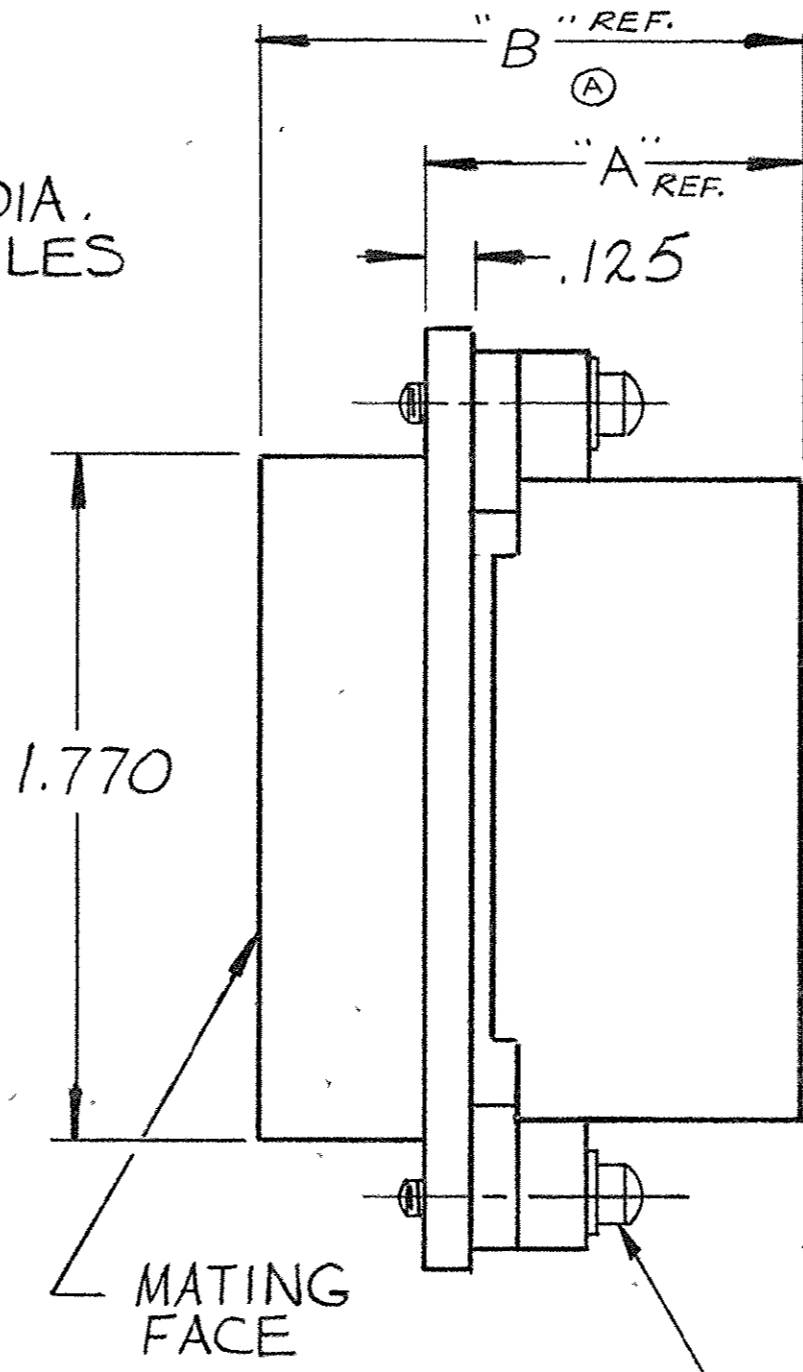
NUMBER 202681

Unpublished copy not to be distributed without written permission of AMP INCORPORATED, HARRISBURG, PA.

| REVISIONS | | | | |
|-----------|------|------------------------|--------------|-----------------|
| SYM | ZONE | DESCRIPTION | DATE | APPROVAL |
| O | | RELEASED WAS M5012-296 | 12-30-64 | W.B. / E.S.H. |
| A | | REVISED W-421 W-524 | 8-2-5 | M.S. DM |
| B | | REVISED W-777 | 10-14-5 | M.S. DH |
| C | | REV. PER ECN Z807, LIA | 11-21-68 | DM |
| D | | REVISED D576 | 2-24-73 | KV / JH |
| E | | REV. / ECN H-220 | 8-14-80 | CLZ |
| F | | REV. / ECN R-1648 | 11-11-85 | M.P.H. / J.M.L. |
| G | | REV PER DF-2235 | T.W. 9-5-89 | M.V.O. |
| H | | REV PER DF-2547 | J.M. 12-8-89 | S.H. |
| J | | REV PER ELD-05-001412 | AL 05/05 | PRE |
| K | | REV PER ECO-05-005359 | 11/05 | PP/DE |
| L | | REV PER ECO 17-015725 | CT 3-28-18 | PD |



.120 DIA. (4) HOLES



SUPERSEDED BY 5-2

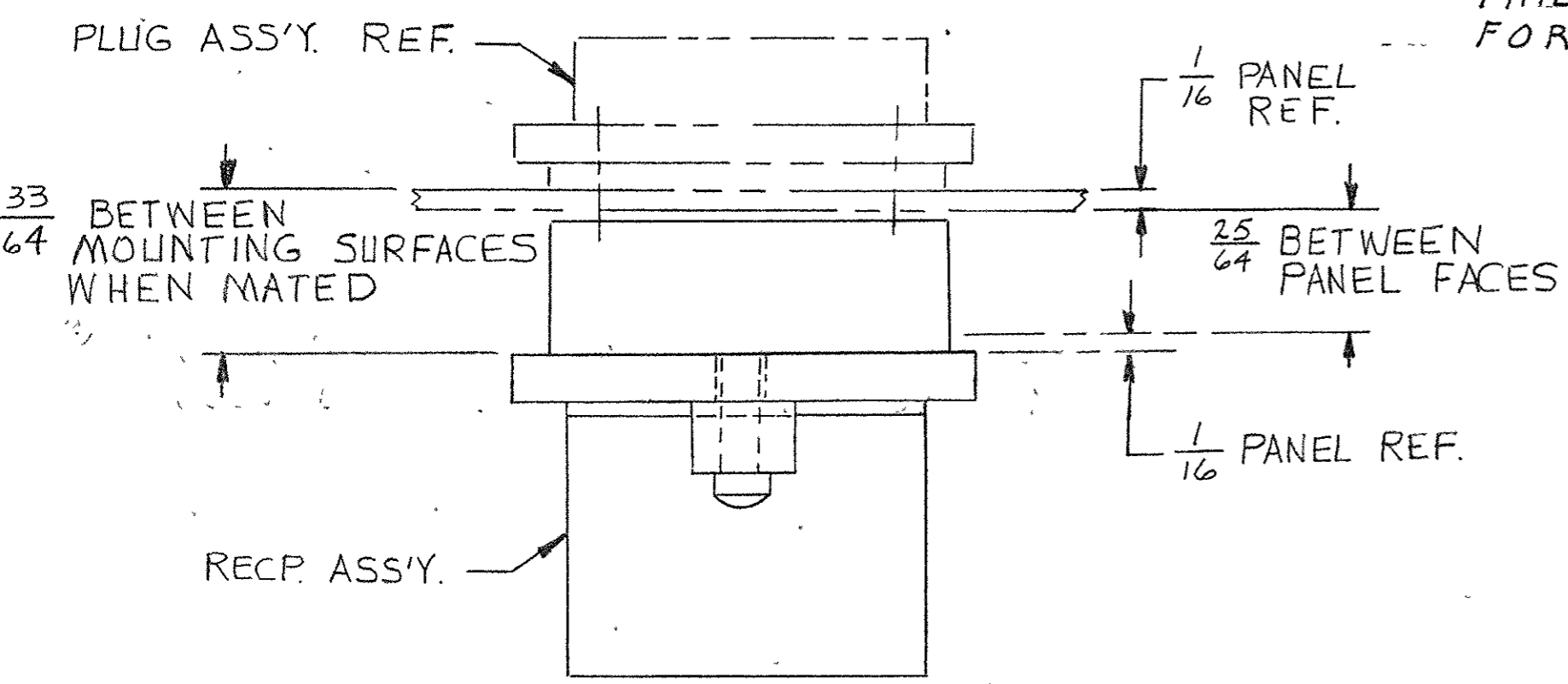
SUPERSEDED BY 5-3

- 202681-1. OBSOLETE
- 202681-2. 1. SAME AS -1 EXCEPT:
2. FILLISTER HEAD SCREWS
- 202681-3. 1. SAME AS -2 EXCEPT:
2. "A" AND "B" DIMENSIONS.
- 202681-4. OBSOLETE
- 5-202681-2. 1. SAME AS -2 EXCEPT:
2. PLATING
- 5-202681-3. 1. SAME AS -3 EXCEPT:
2. PLATING

NOTE:
 1. ZINC PLATE PER ASTM-B-633 CLASS 2 COLORLESS SUPPLEMENTARY CHROMATE.
 2. PLATED ELECTROLESS NICKEL PER SAE-AMS-C-26074 .000400-.000800 THK (NO INTENTIONAL ADDITIONS OF LEAD OR CADMIUM PER DFE STD 230-700).

PHILLIPS HD. SCREWS FOR -1 ONLY

| REV | DESCRIPTION | DATE | BY | CHKD | APPR |
|--------------------------|-------------|-------------|----|------|------|
| 5-202681-3 | .595 1.103 | | | | |
| 5-202681-2 | 1.001 1.509 | | | | |
| OBSOLETE | 202681-4 | .595 1.103 | | | |
| SUPERSEDED BY 5-202681-3 | 202681-3 | .595 1.103 | | | |
| SUPERSEDED BY 5-202681-2 | 202681-2 | 1.001 1.509 | | | |
| OBSOLETE | 202681-1 | 1.001 1.509 | | | |



| | | | | | | | | | | |
|--|-----|-------------|------|---------|------|---|------------------------|----------|-----|--------|
| AMP INFO | LOC | PRINT | DIST | BY | REQD | NOMENCLATURE OR DESCRIPTION | PART OR IDENTIFYING NO | "A" | "B" | FINISH |
| DF | J | BO | | | | | | | | |
| UNLESS OTHERWISE SPECIFIED DIMENSIONS ARE IN INCHES TOLERANCES ON FRACTIONS DECIMALS ANGLES ± .005 ± | | | | | | | | | | |
| MATERIAL | | SIGNATURE | | DATE | | AMP INCORPORATED HARRISBURG, PENNSYLVANIA | | | | |
| DIE CAST ALUMINUM | | K. Jones | | 6/8/64 | | RECEPTACLE ASSEMBLY MODULE | | | | |
| HEAT TREAT | | CHKD | | DATE | | CODE IDENT NO | | | | |
| — 1 — | | R.S. Heide | | 1/8/65 | | 00779 - C | | | | |
| FINISH | | DSGN ENGR | | DATE | | SIZE | | NUMBER | | REV |
| SEE NOTE 1 | | L.B. Miller | | 1-11-65 | | C | | 202681-2 | | L |
| | | APPR | | DATE | | SCALE | | WT | | CALC |
| | | C. Cant | | 1/1/65 | | 2-1 | | | | SHEET |