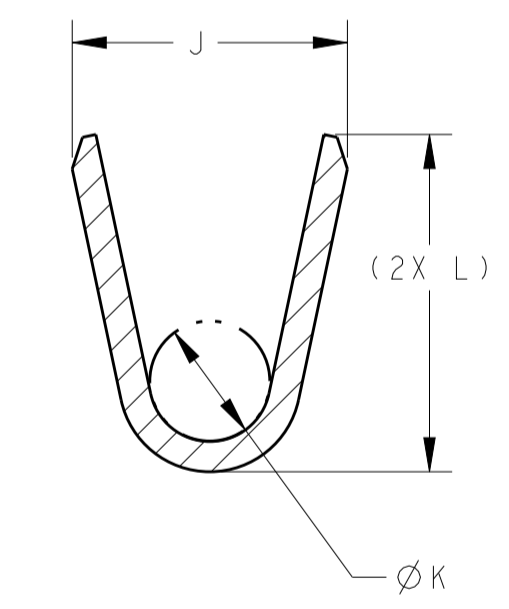
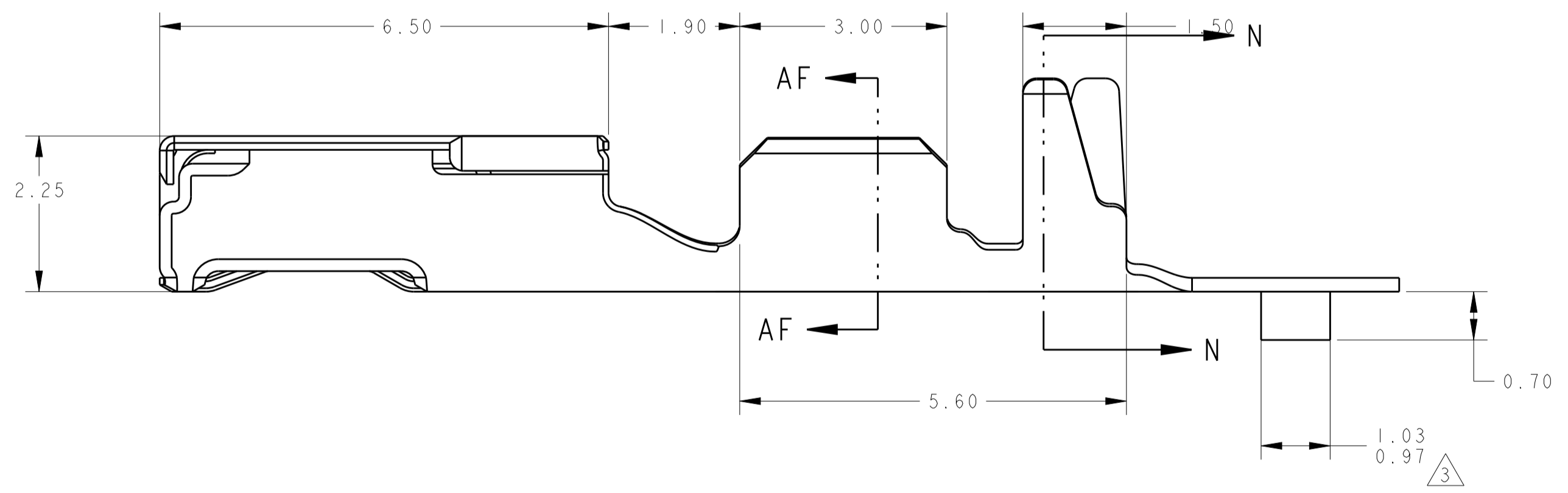
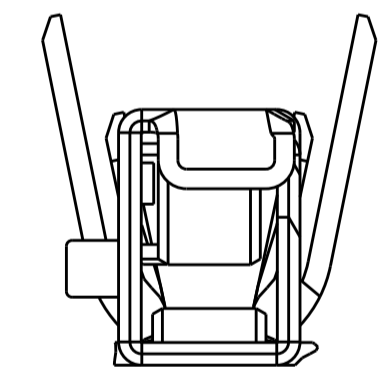
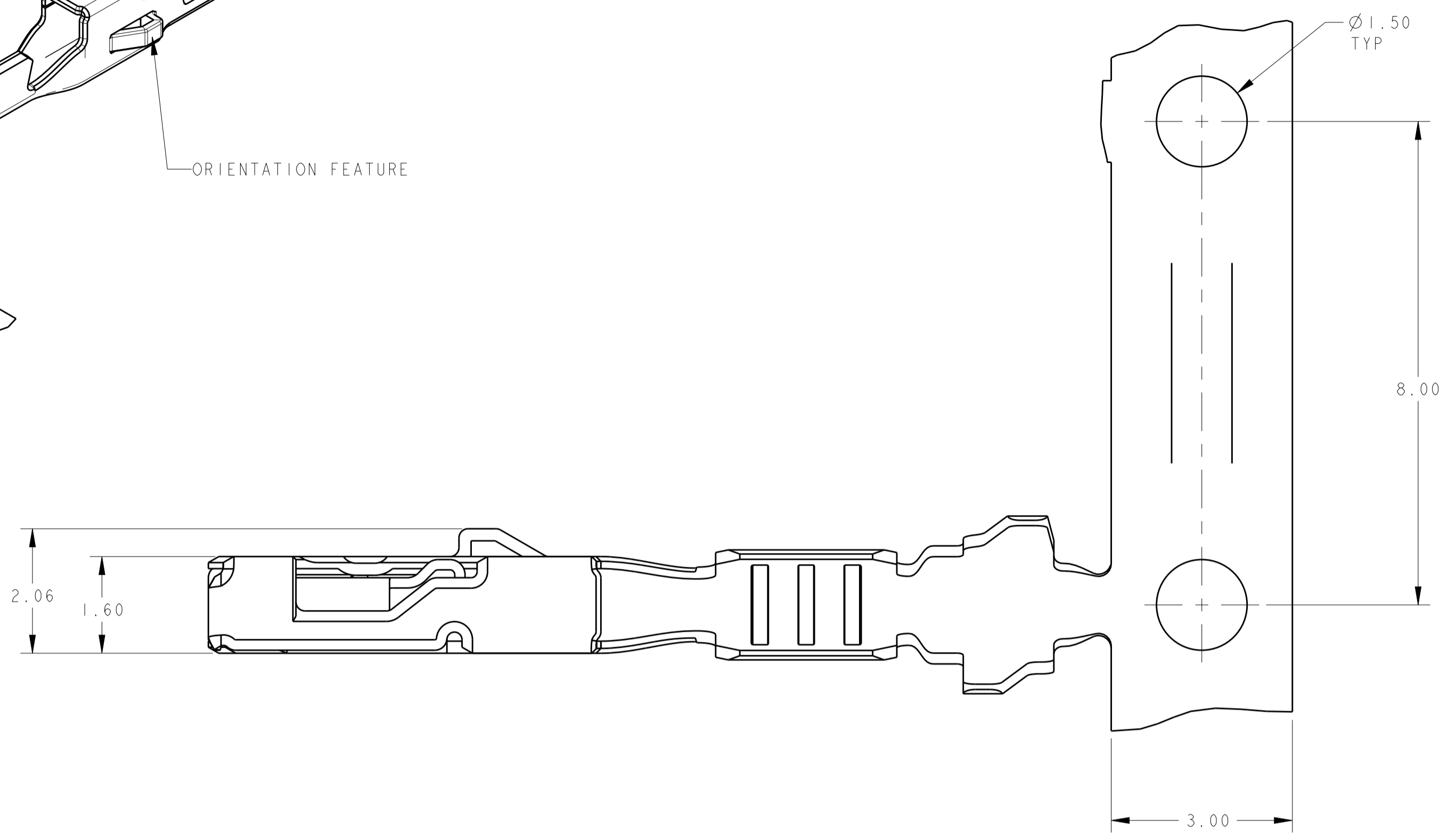
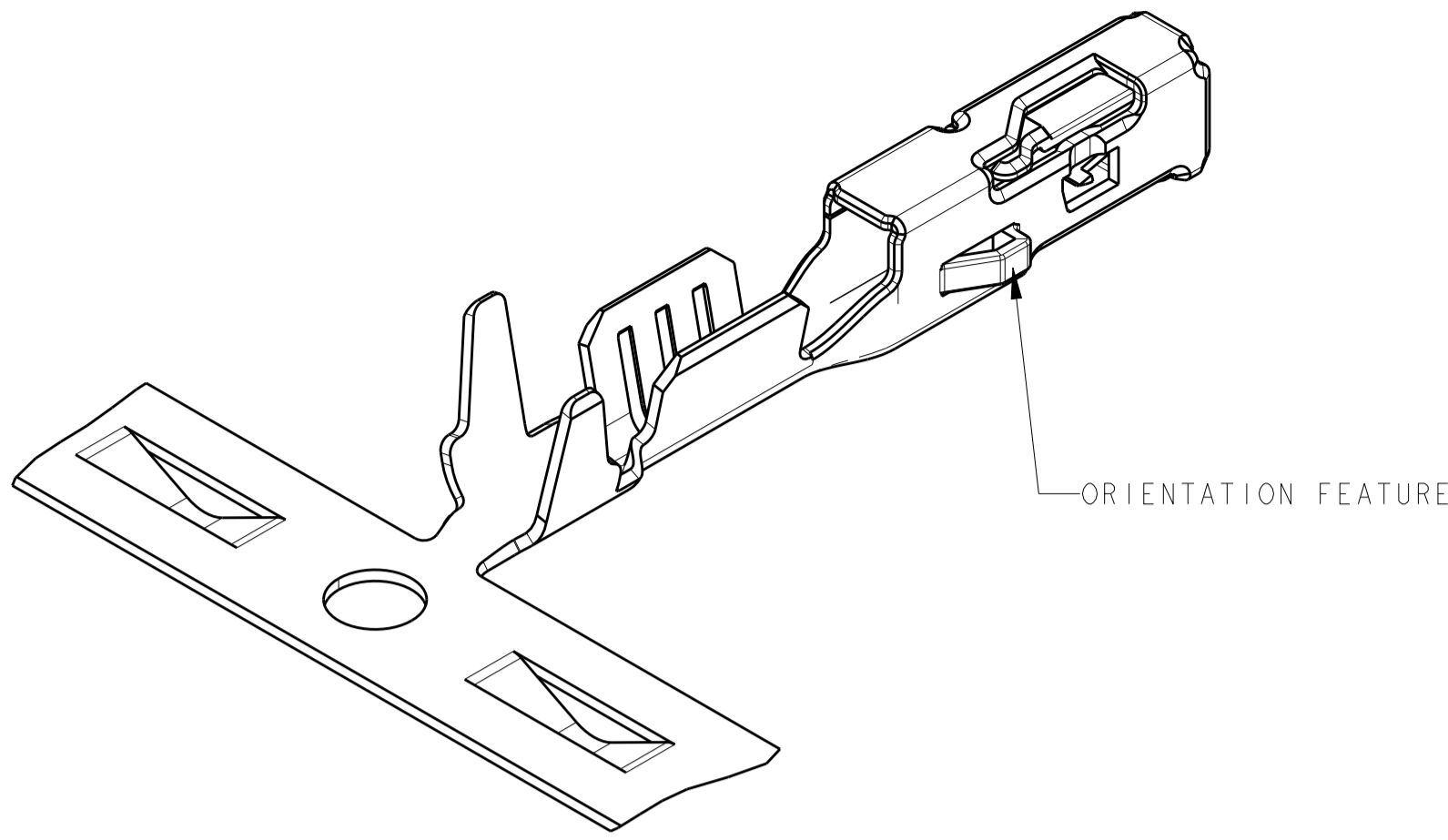
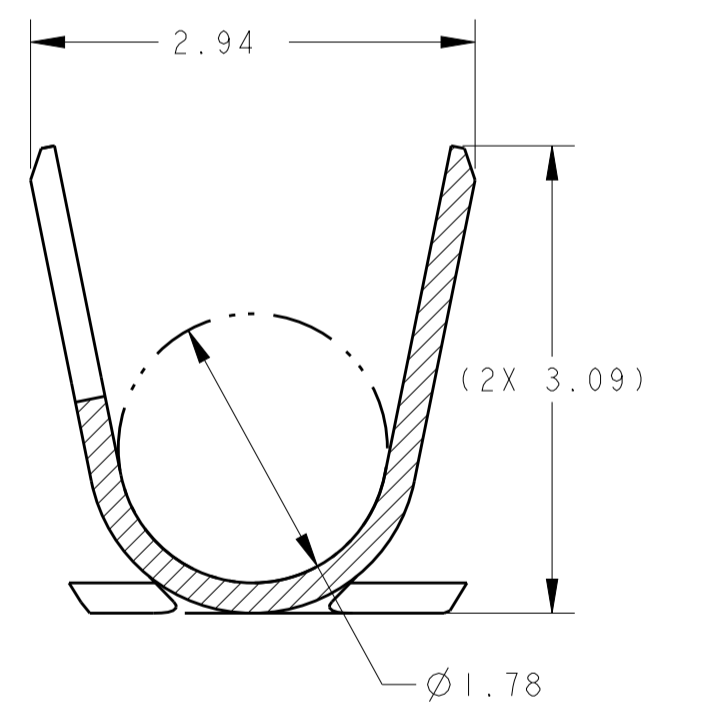


LOC	DIST	REV	DATE	BY	CHK	APPV
1N	00	B	19JUL2012	DLD	CJS	

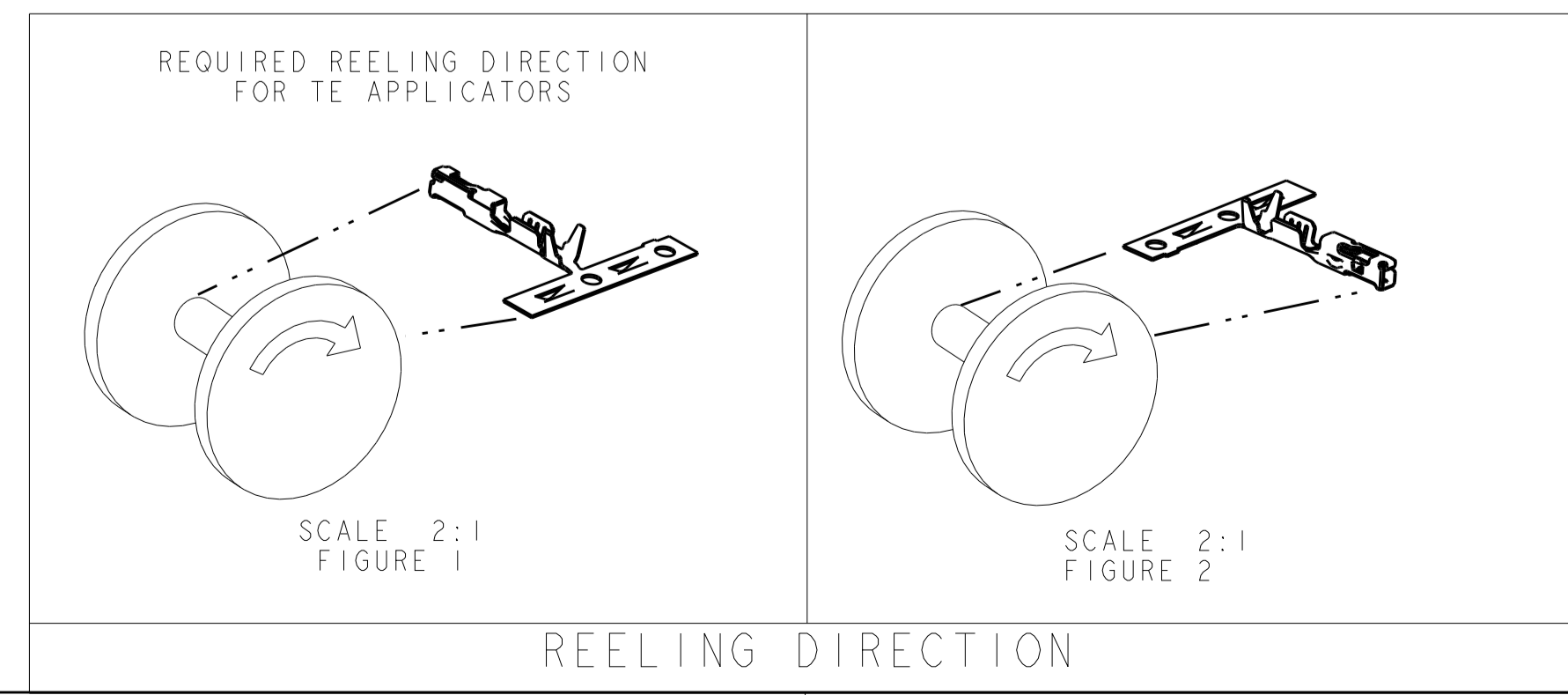
- 1 MATERIAL: 0.2mm THICK CuNiSi ALLOY
- 2 FINISH: PRE-PLATED WITH 1.00µm MIN BRIGHT TIN
- 3 MATERIAL ID FEATURE IN "DOWN" POSITION
- 4. THIS PRODUCT TO BE VALIDATED TO GMW3191, TEMP CLASS T3 AND VIBRATION CLASS VI
- 5. THIS PRODUCT IS DESIGNED TO BE COMPATIBLE WITH SEALED APPLICATIONS
- 6. NOTE DELETED
- 7. NORMAL FORCE 240 GRAMS REFERENCE.
- 8. BULGE PERMISSIBLE UNDER ORIENTATION FEATURE.
- 9. TERMINAL HAS NYE LUBRICANTS NYETACT 561J-50-AG PERFORMANCE LUBE/GREASE APPLIED. THIS IS A WHITISH COLORED LUBE. AMOUNT AND VISIBILITY MAY VARY.



SECTION AF-AF
SCALE 20:1



SECTION N-N
SCALE 20:1



INSULATION DIAMETER	L	K	J	REELING DIRECTION	FINISH	mm ²	AWG	PART NUMBER
2.06 MAX	2.43	1.00	1.96	FIGURE 2	2	0.75	18	2035170-6
1.50-1.85	2.23	0.80	1.82	FIGURE 2	2	0.35-0.50	20-22	2035170-5
2.06 MAX	2.43	1.00	1.96	FIGURE 1	2	0.75	18	2035170-2
1.50-1.85	2.23	0.80	1.82	FIGURE 1	2	0.35-0.50	20-22	2035170-1

THIS DRAWING IS A CONTROLLED DOCUMENT.		DWN: H. MOLL 12MAR2008	TE Connectivity
DIMENSIONS: mm		CHK: F. KINSEY 12MAR2008	
TOLERANCES UNLESS OTHERWISE SPECIFIED:		APPV: C. SCHMID 27AUG2009	
0 PLC ± 1 PLC ±0.15 2 PLC ± 3 PLC ± 4 PLC ± ANGLES ±		NAME: CONTACT, FEMALE, 0.64mm, CuNiSi, SIDE ORIENTATION, Sn PLATE	
MATERIAL: 1	FINISH: 1	APPLICATION SPEC: 114-13183 WEIGHT: 0.23 G Customer Drawing	SIZE: A100779 CAGE CODE: 2035170 SCALE: 15:1 SHEET 1 OF 1 REV B