



**Have a Question?**  
 Chat with a Product  
 Information Specialist

What can we help you find?

[Products](#) | 
 [Industries](#) | 
 [Resources](#) | 
 [About TE](#) | 
 [My Account](#) | 
 [Innovation](#) | 
 [Support Center](#)

## 204502-1 Product Details

[Share](#) | 
 [Print](#) | 
 [Email](#)



**204502-1**

TE Internal Number: 204502-1

Active

View 3D PDF

### Subminiature D Pins/Sockets for MIL-C-24308 and MIL-C-39029

Not EU RoHS or ELV Compliant (Find RoHS Compliant Alternates)

**Product Highlights:**

- Connector
- Product Series = 90
- Connector Style = Receptacle
- Accepts Contact Gender = Socket
- Density = High

[View all Features](#)

### Quick Links

- ▶ [Pricing & Availability](#)
- ▶ [Search for Tooling](#)
- ▶ [Product Feature Selector](#)
- ▶ [Contact Us About This Product](#)

[Add to My Part List](#) | 
 [Request Sample](#) | 
 [Find Similar Products](#) | 
 [Buy Product](#)

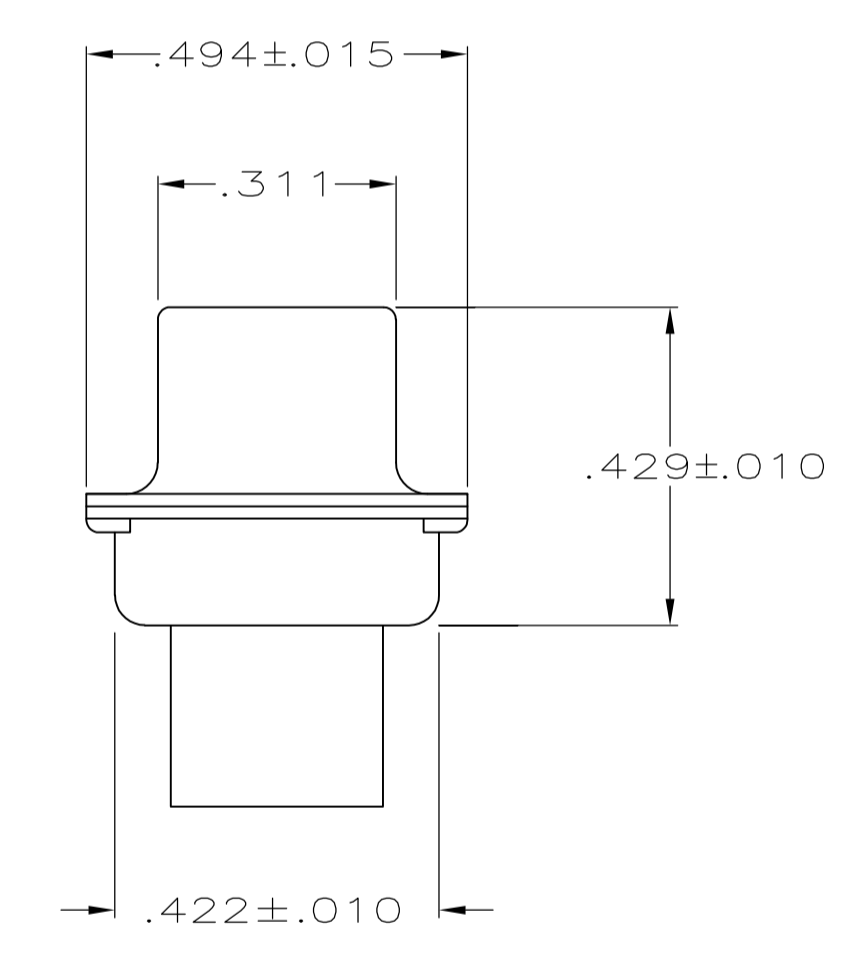
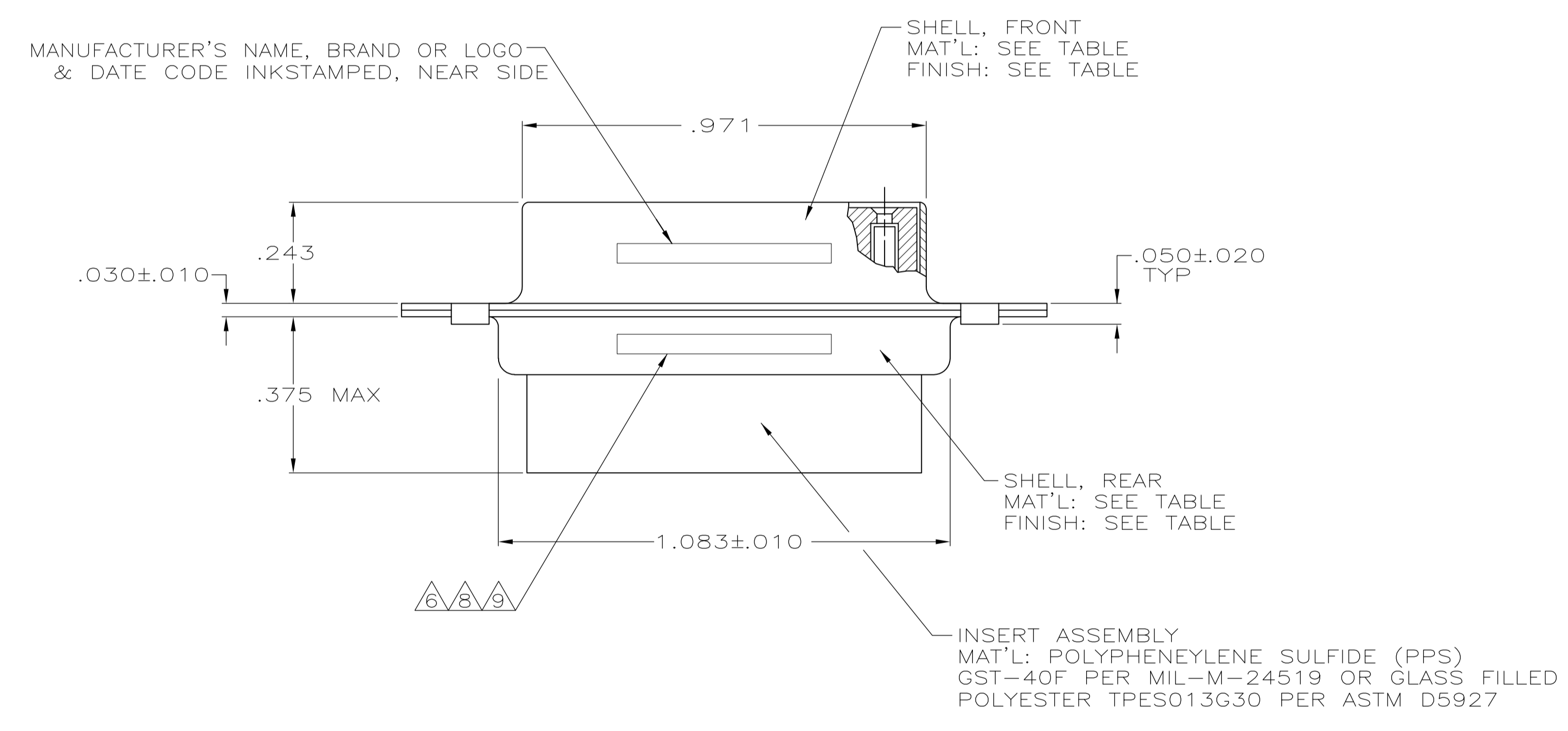
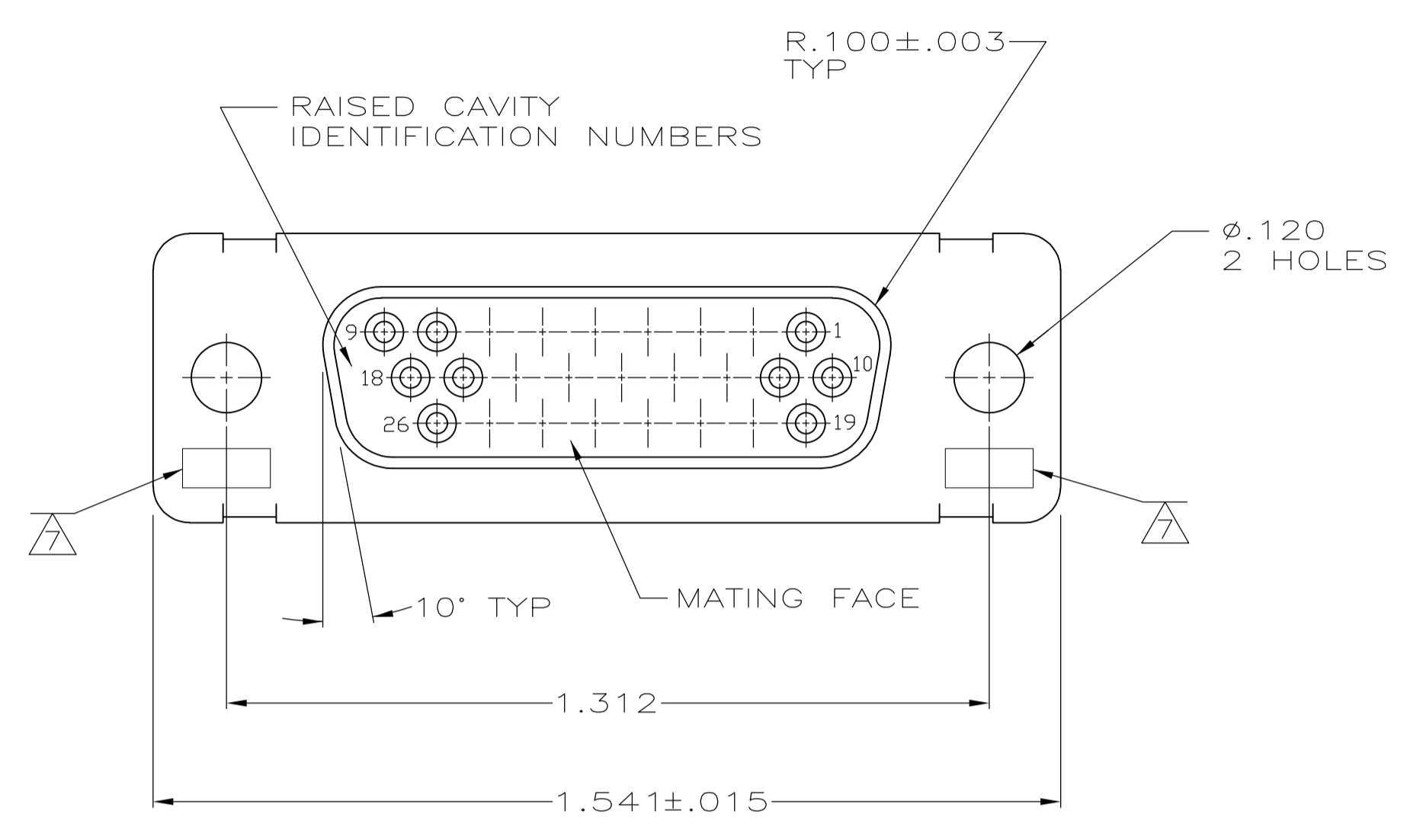
Documentation & Additional Information	
<p><b>Product Drawings:</b></p> <ul style="list-style-type: none"> <li>• <a href="#">AMPLIMITE RCPT. FOR SOCKET CONTACTS HI-DENSITY D CON...</a> (PDF, English)</li> </ul> <p><b>Catalog Pages/Data Sheets:</b></p> <ul style="list-style-type: none"> <li>• None Available</li> </ul> <p><b>Product Specifications:</b></p> <ul style="list-style-type: none"> <li>• None Available</li> </ul> <p><b>Application Specifications:</b></p> <ul style="list-style-type: none"> <li>• None Available</li> </ul> <p><b>Instruction Sheets:</b></p> <ul style="list-style-type: none"> <li>• <a href="#">AMPLIMITE High Density 22 (HD-22) Connectors</a> (PDF, English)</li> </ul> <p><b>CAD Files: (CAD Format &amp; Compression Information)</b></p> <ul style="list-style-type: none"> <li>• <a href="#">2D Drawing</a> (DXF, Version 5)</li> <li>• <a href="#">3D Model</a> (IGES, Version 5)</li> <li>• <a href="#">3D Model</a> (STEP, Version 5)</li> </ul>	<p><b>Additional Information:</b></p> <ul style="list-style-type: none"> <li>• <a href="#">Product Line Information</a></li> </ul> <p><b>Related Products:</b></p> <ul style="list-style-type: none"> <li>• <a href="#">Tooling</a></li> </ul>

[List all Documents](#)

Product Features (Please use the Product Drawing for all design activity)	
<p><b>Product Type Features:</b></p> <ul style="list-style-type: none"> <li>• <a href="#">Product Type</a> = Connector</li> <li>• <a href="#">Product Series</a> = 90</li> <li>• <a href="#">Shell Size</a> = 2</li> <li>• <a href="#">Mounting Hole Diameter</a> (mm [in]) = 3.05 [.120]</li> </ul> <p><b>Termination Features:</b></p> <ul style="list-style-type: none"> <li>• <a href="#">Termination Method to Wire/Cable</a> = Crimp</li> </ul> <p><b>Body Features:</b></p> <ul style="list-style-type: none"> <li>• <a href="#">Blindmate</a> = No</li> <li>• <a href="#">Non-Magnetic</a> = No</li> <li>• <a href="#">Rear Grommet</a> = No</li> <li>• <a href="#">Power/Signal/Coax Combination</a> = No</li> <li>• <a href="#">Shell Material</a> = Steel</li> <li>• <a href="#">Shell Plating</a> = Cadmium</li> <li>• <a href="#">Mount Style</a> = Mounting Holes</li> <li>• <a href="#">Retention Clip Material</a> = Stainless Steel</li> </ul> <p><b>Contact Features:</b></p> <ul style="list-style-type: none"> <li>• <a href="#">Accepts Contact Gender</a> = Socket</li> <li>• <a href="#">Contact Size</a> = 22</li> <li>• <a href="#">Contact Style</a> = Crimp Snap-in</li> </ul>	<p><b>Housing Features:</b></p> <ul style="list-style-type: none"> <li>• <a href="#">Connector Style</a> = Receptacle</li> </ul> <p><b>Configuration Features:</b></p> <ul style="list-style-type: none"> <li>• <a href="#">Density</a> = High</li> <li>• <a href="#">Number of Positions</a> = 26</li> </ul> <p><b>Industry Standards:</b></p> <ul style="list-style-type: none"> <li>• <a href="#">Government/Industry Qualification</a> = Yes</li> <li>• <a href="#">Government/Industry Part Number</a> = M24308/2-287F</li> <li>• <a href="#">RoHS/ELV Compliance</a> = Not ELV/RoHS compliant</li> <li>• <a href="#">Lead Free Solder Processes</a> = Wave solder capable to 240°C, Wave solder capable to 260°C, Wave solder capable to 265°C</li> <li>• <a href="#">NASA Qualification</a> = No</li> </ul> <p><b>Conditions for Usage:</b></p> <ul style="list-style-type: none"> <li>• <a href="#">Applies To</a> = Wire/Cable</li> </ul> <p><b>Other:</b></p> <ul style="list-style-type: none"> <li>• <a href="#">Brand</a> = AMP</li> <li>• <a href="#">Comment</a> = Size 22 sockets supplied with receptacles are loose piece.; "F" is stamped on connectors following M24308 part number as required. "F" designates cadmium shell plating.</li> </ul>

LOC	DIST	REVISIONS				
DF	DO	REV	DESCRIPTION	DATE	DWN	APVD
S		1	REV PER ECO-08-030008	21JAN2009	PK	RL

- THIS RCPT. IS DESIGNED TO CONFORM TO THE LATEST ISSUE OF MIL-C-24308.
- MAX WIRE INSUL TO BE USED WITH THIS RCPT. IS  $\phi.054$ .
- METAL RETENTION CLIPS ARE INCLUDED IN INSERTS.
- PACKAGE STAMPED M 24308/2-287F.
- THIS RCPT. WILL ACCEPT SIZE 22 SOCKET CONTACT M 39029/57-354 OR ANY TYCO HDD-22 SOCKET CONTACT.
- MFG'S PART NO. STAMPED ON CONNECTOR REPRESENTS KIT NUMBER WITH CONTACTS.
- UL/CSA DESIGNATION STAMPED ON SHELL.
- 204514 INK STAMPED, NEAR SIDE. M24308/2-12F INK STAMPED, FAR SIDE.
- 204502-4 INK STAMPED, NEAR SIDE.
- FINISH: BRIGHT TIN PER ASTM-B-545, .000400-.000550 THK OVER COPPER PER AMS2418, .000050 MIN THK.



REMARKS	FINISH	SHELL MATERIAL	PART NO.
SUPSD BY 204502-1	CADMIUM PER QQ-P-416	STEEL, CLASS G	204502-4
SUPSD BY 206501-4	CADMIUM PER QQ-P-416	STEEL, CLASS G	204502-3
	CADMIUM PER QQ-P-416	BRASS	204502-2
	CADMIUM PER QQ-P-416	STEEL, CLASS G	204502-1

THIS DRAWING IS A CONTROLLED DOCUMENT.

DIMENSIONS: INCHES	TOLERANCES UNLESS OTHERWISE SPECIFIED:	0 PLC ± -	1 PLC ± -	2 PLC ± -	3 PLC ± .005	4 PLC ± -	ANGLES ± 0°30'
--------------------	--	-----------	-----------	-----------	--------------	-----------	----------------

MATERIAL: SEE TABLE	FINISH: SEE TABLE	WEIGHT: -	SIZE: A1	CAGE CODE: 00779	DRAWING NO: 204502	RESTRICTED TO: -
---------------------	-------------------	-----------	----------	------------------	--------------------	------------------

CUSTOMER DRAWING SCALE 4:1 SHEET 1 OF 1 REV S