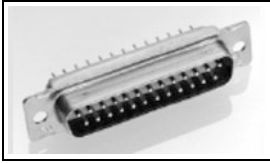


## 205166-1 Product Details

[Share](#) [Print](#) [Email](#)



**205166-1**

TE Internal Number: 205166-1  
✔ Active

[View 3D PDF](#)

### Subminiature D Pins/Sockets for MIL-C-24308 and MIL-C-39029

Not EU RoHS or ELV Compliant (Find RoHS Compliant Alternates)

**Product Highlights:**

- Connector
- Product Series = 109
- Connector Style = Plug
- Accepts Contact Gender = Pin
- Density = Standard

[View all Features](#)

### Quick Links

- ▶ [Pricing & Availability](#)
- ▶ [Search for Tooling](#)
- ▶ [Product Feature Selector](#)
- ▶ [Contact Us About This Product](#)

[Add to My Part List](#) [Request Sample](#) [Find Similar Products](#) [Buy Product](#)

### Documentation & Additional Information

**Product Drawings:**

- [AMPLIMITE PLUG FOR PIN CONTACTS HI-DENSITY HD-20 CON... \(PDF, English\)](#)

**Catalog Pages/Data Sheets:**

- None Available

**Product Specifications:**

- None Available

**Application Specifications:**

- None Available

**Instruction Sheets:**

- None Available

**CAD Files:** ([CAD Format & Compression Information](#))

- [2D Drawing \(DXF, Version N\)](#)
- [3D Model \(IGES, Version N\)](#)
- [3D Model \(STEP, Version N\)](#)
- [2D Drawing \(DXF, Version AC\)](#)
- [3D Model \(IGES, Version AC\)](#)
- [3D Model \(STEP, Version AC\)](#)

[List all Documents](#)

**Additional Information:**

- [Product Line Information](#)

**Additional Product Images:**

- [Insert Arrangement](#)

**Related Products:**

- [Tooling](#)

### Product Features (Please use the Product Drawing for all design activity)

**Product Type Features:**

- [Product Type](#) = Connector
- [Product Series](#) = 109
- [Shell Size](#) = 3
- [Shell Material](#) = Steel
- [Termination Method to Wire/Cable](#) = Crimp
- [Mounting Hole Diameter \(mm \[in\]\)](#) = 3.05 [.120]

**Body Features:**

- [Blindmate](#) = No
- [Non-Magnetic](#) = No
- [Rear Grommet](#) = No
- [Power/Signal/Coax Combination](#) = No
- [Shell Plating](#) = Cadmium
- [Mount Style](#) = Mounting Holes
- [Retention Clip Material](#) = Stainless Steel

**Contact Features:**

- [Accepts Contact Gender](#) = Pin
- [Contact Size](#) = 20
- [Contact Style](#) = Crimp Snap-in

**Housing Features:**

- [Connector Style](#) = Plug

**Configuration Features:**

- [Density](#) = Standard
- [Number of Positions](#) = 25

**Industry Standards:**

- [Government/Industry Qualification](#) = Yes
- [Government/Industry Part Number](#) = M24308/4-261F
- [RoHS/ELV Compliance](#) = Not ELV/RoHS compliant
- [Lead Free Solder Processes](#) = Wave solder capable to 260°C, Wave solder capable to 240°C, Wave solder capable to 265°C
- [NASA Qualification](#) = No

**Conditions for Usage:**

- [Applies To](#) = Wire/Cable

**Other:**

- [Brand](#) = AMP

### Corporate Information

[About TE](#)  
[Investors](#)

### Quick Links

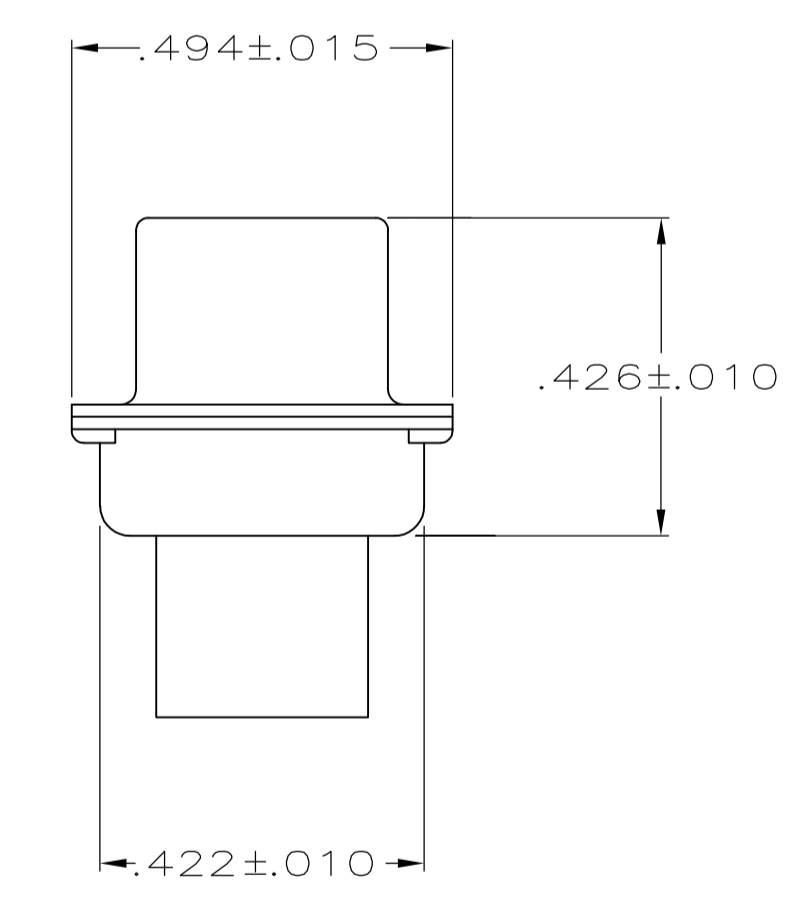
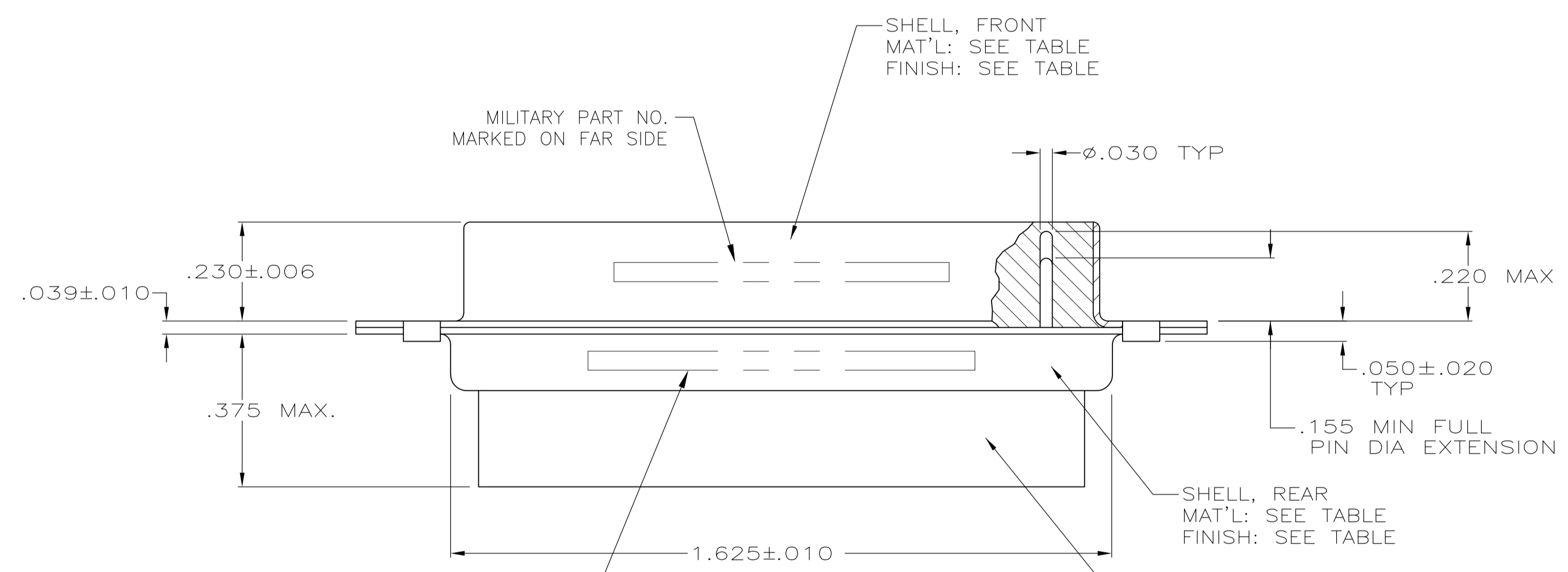
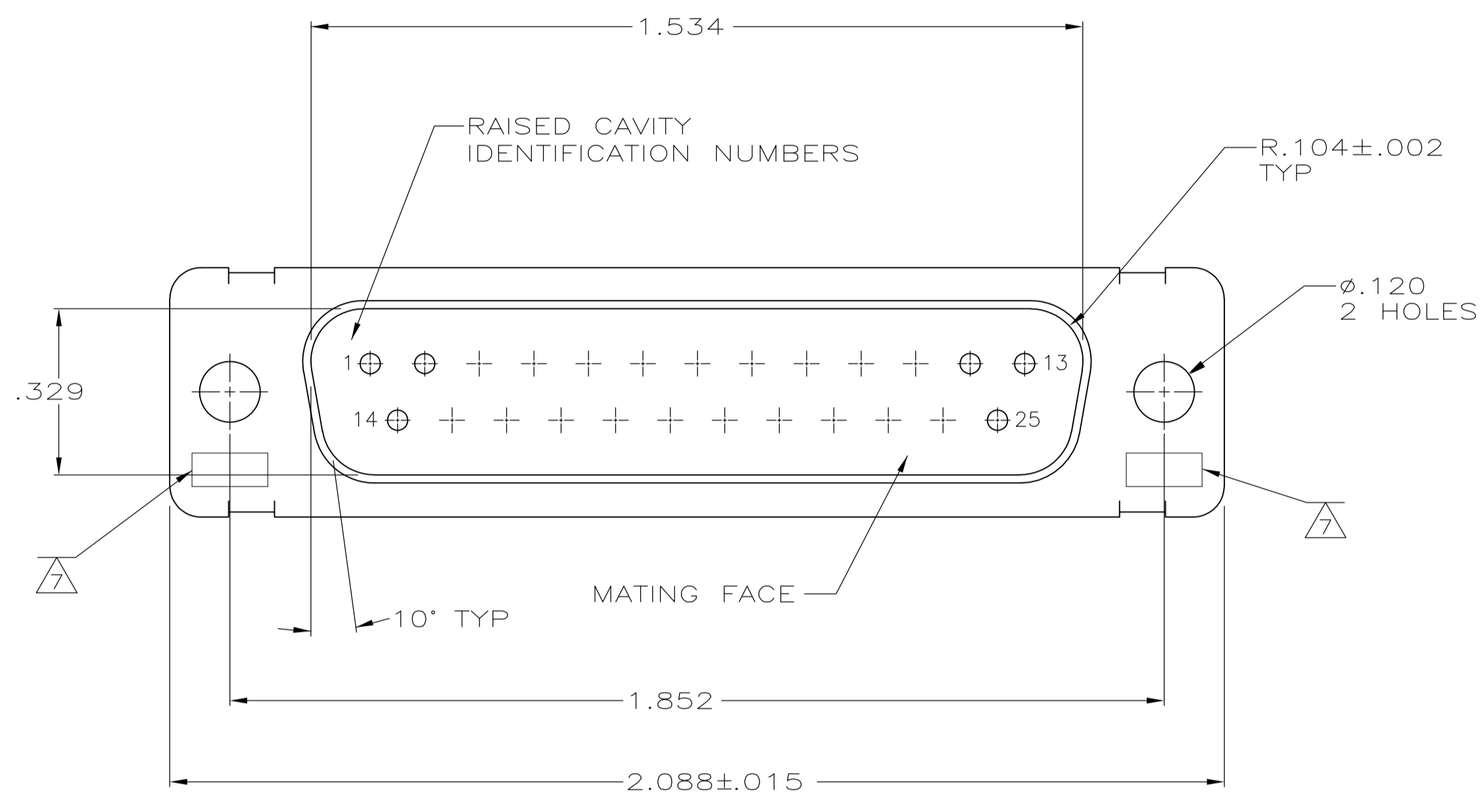
[Distributor Inventory](#)  
[Product Cross Reference](#)

### Customer Support

[Email or Chat With Us](#)  
[Find a Phone Number](#)

LOC		DIST		REVISIONS			
P	LTR	DESCRIPTION	DATE	DN	APVD		
P1		REVISED PER ECO-11-005030	11MAR11	RK	HMR		

1. THIS PLUG IS DESIGNED TO CONFORM TO THE LATEST ISSUE OF MIL-C-24308.
2. MAXIMUM WIRE INSULATION TO BE USED WITH THIS PLUG IS  $\phi.068$ .
3. STAINLESS STEEL RETENTION CLIPS ARE INCLUDED IN INSERTS.
- ~~4. PACKAGE STAMPED M 24308/4 261F.~~
5. THIS PLUG WILL ACCEPT SIZE 20 PIN CONTACT M39029/64-369 OR ANY TYCO HD-20 PIN CONTACT.
- 6 MFG'S PART NO. STAMPED ON CONNECTOR REPRESENTS KIT NUMBER WITH CONTACTS.
- 7 UL/CSA DESIGNATION STAMPED IN THIS AREA.
- ~~8 TE CONNECTIVITY, 205560-2, & DATE CODE INK STAMPED, FAR SIDE.~~
- ~~9 TE CONNECTIVITY, 205166-4 INK STAMPED, FAR SIDE.~~
- 10 FINISH: BRIGHT TIN PER ASTM-B-545 .000400-.000550 THK OVER COPPER PER AMS2418 .000050 MIN THK.
- 11 FRONT SHELL HAS GROUNDING INDENTS, 205166-4 ONLY, (NOT SHOWN).
- ~~12 M24308/4 F INK STAMPED, FAR SIDE.~~



MFG'S NAME, BRAND OR LOGO, MFG'S PART NO. & DATE CODE MARKED ON FAR SIDE

-	-	-	205166-5	10	STEEL, CLASS G	205166-5
11	-	-	205166-4	10	STEEL, CLASS G	205166-4
SUPSD BY 206800-2	-	-	-	CADMIUM PER QQ-P-416	BRASS	205166-2
6	M24308/4-261F	M24308/4-3F	205560-2	CADMIUM PER QQ-P-416	STEEL, CLASS G	205166-1
REMARKS	MILITARY PART NO. MARKED ON PACKAGE	MILITARY PART NO. MARKED ON CONNECTOR	MFG'S PART NO. MARKED ON CONNECTOR	FINISH	SHELL MATERIAL	PART NO.

THIS DRAWING IS A CONTROLLED DOCUMENT.

DIMENSIONS: INCHES	TOLERANCES UNLESS OTHERWISE SPECIFIED:	DIN C.C.THOMAS 08-DEC-87	TE Connectivity
0 PLC ± -	1 PLC ± -	10-DEC-87	
2 PLC ± -	3 PLC ± .005	APVD F.C.BALLEW 10-DEC-87	NAME
4 PLC ± -	ANGLES ± # 0'30"	PRODUCT SPEC	AMPLIMITE PLUG FOR PIN CONTACTS HI-DENSITY HD-20 CONNECTOR SIZE 3 (25 POSN) SERIES 109
MATERIAL SEE CALLOUTS	FINISH SEE CALLOUTS	WEIGHT	SIZE CASE CODE DRAWING NO. RESTRICTED TO
		A1 00779 C=205166	SCALE 4:1 SHEET 1 OF 1 REV P1

CUSTOMER DRAWING