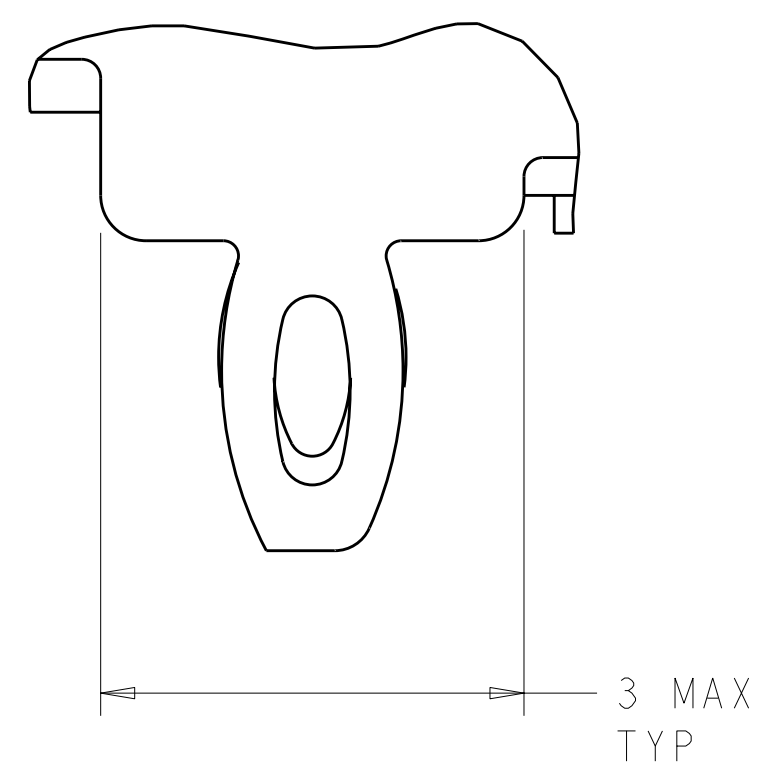


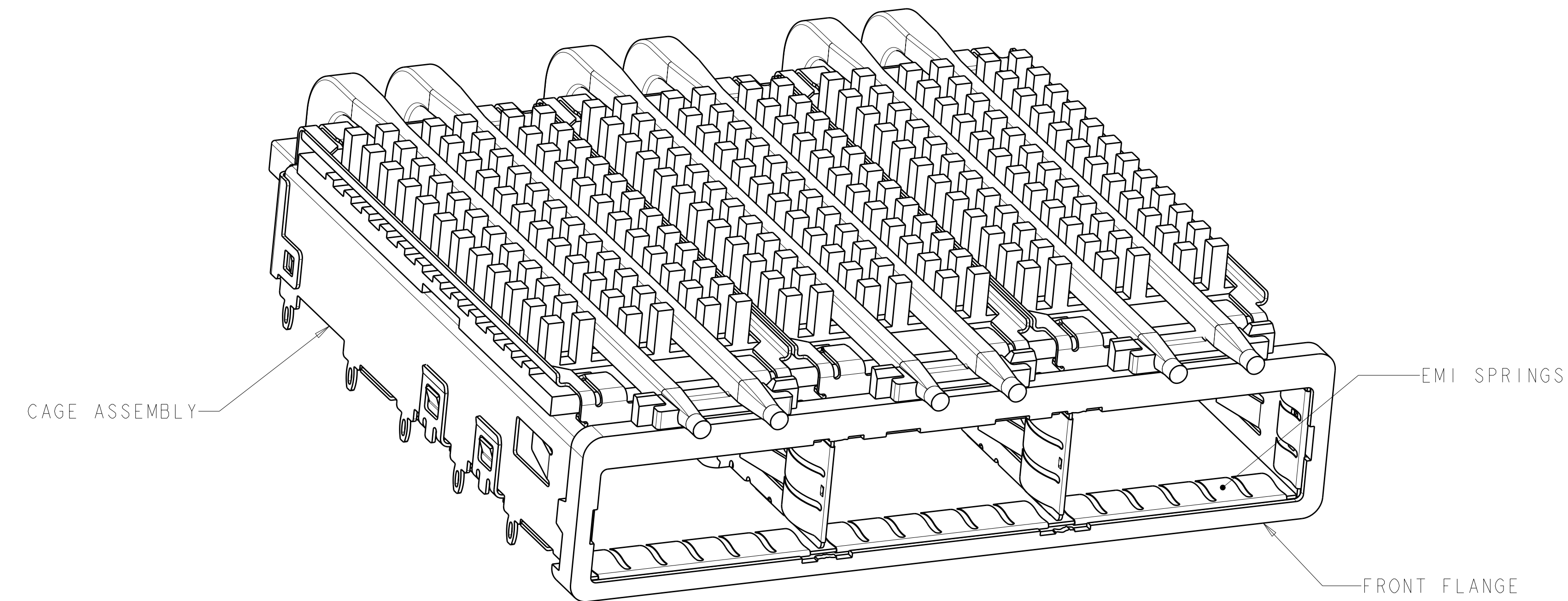
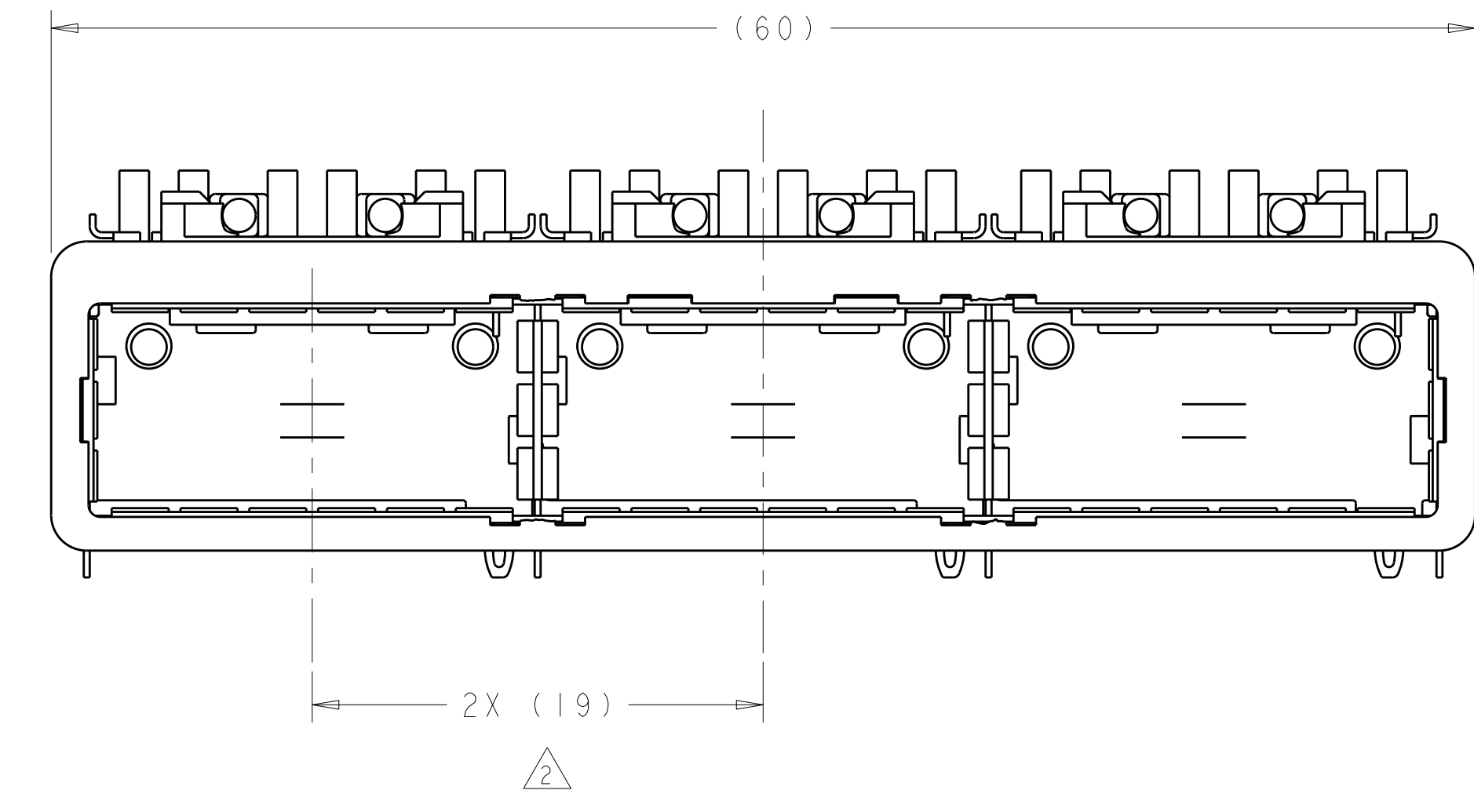
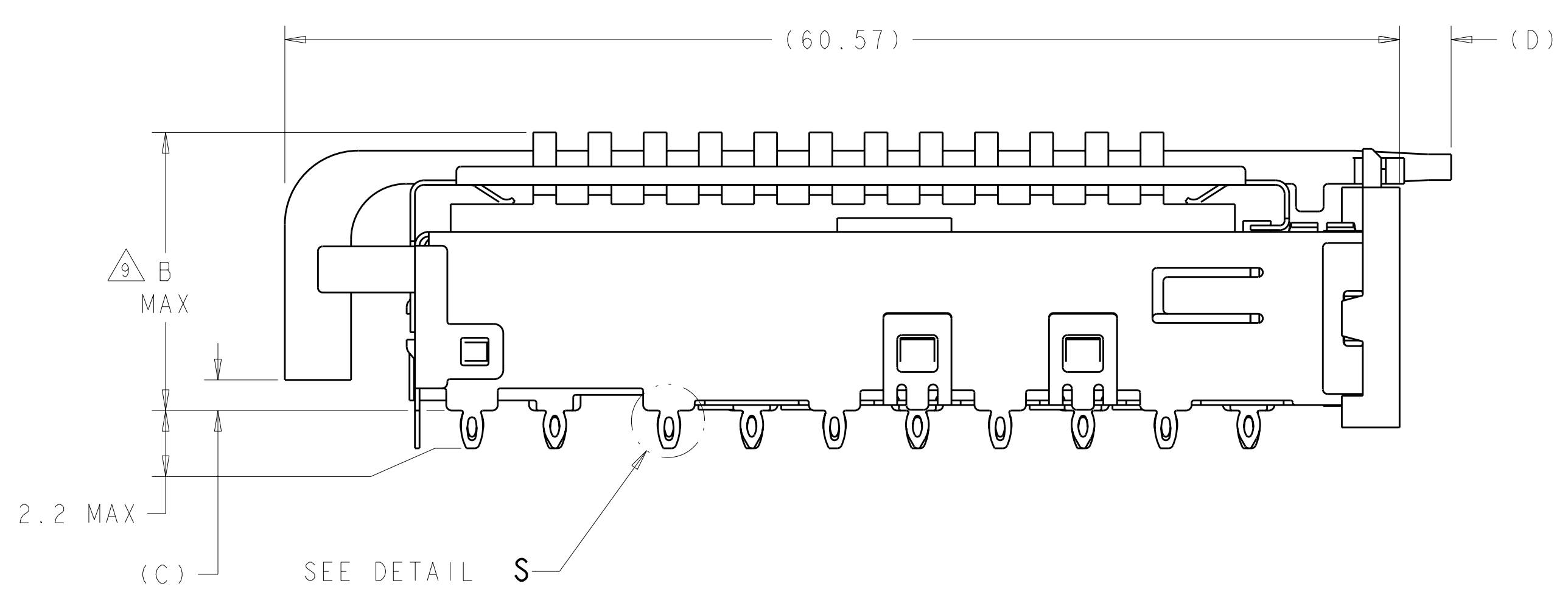
LOC	DIST	REV	DATE	BY	CHK	APPV
GP	00					
		C1	11MAR2011	RK	HMR	
		D	31MAR2012	JY	AC	



DETAIL S
 SCALE 20:1

- 1 CAGE ASSEMBLY MATERIAL: NICKEL SILVER, 0.25 THICK
 HEAT SINK MATERIAL: ALUMINUM
 HEAT SINK CLIP MATERIAL: STAINLESS STEEL
 EMI SPRINGS MATERIAL: COPPER ALLOY
 FRONT FLANGE MATERIAL: ZINC ALLOY
 LIGHT PIPE MATERIAL: CLEAR POLYCARBONATE
- 2 PITCH BETWEEN PORTS OF ONE 1X3 CAGE ASSEMBLY.
- 3 SPACING BETWEEN CAGES ON THE SAME PC BOARD, TO BE SPECIFIED BY CUSTOMER, MUST COMPLY WITH MINIMUM DIMENSIONS SHOWN.
- 4 REFERENCE APPLICATION SPEC 114-13218 FOR RECOMMENDED DRILL HOLE DIAMETER AND PLATING THICKNESS.
- 5 DATUMS AND BASIC DIMENSIONS ESTABLISHED BY CUSTOMER.
- 6 DIMENSION F IS THE NOMINAL THICKNESS OF CUSTOMER SUPPLIED PC BOARD, SINGLE SIDED PC BOARD MINIMUM THICKNESS = 1.45mm, DOUBLE SIDED PC BOARD MINIMUM THICKNESS = 2.2mm PER QSFP
- 7 HEAT SINKS, LIGHT PIPES, AND HEAT SINK CLIPS SHIPPED ASSEMBLED TO CAGE ASSEMBLY. CAGE ASSEMBLY MAY BE PRESSED INTO THE PCB AS SHIPPED.
- 8 DATUM -A- IS TOP SURFACE OF PC BOARD.
- 9 DIMENSION APPLIES WITH MODULE INSERTED IN CAGE.
- 10 UNPLATED THRU HOLE.
- 11. MATES WITH QSFP MSA COMPATIBLE TRANSCEIVER.
- 12 SURFACE TRACES PERMITTED WITHIN THIS AREA EXCEPT WHERE CAGE STANDOFFS, SHOWN IN DETAIL S, CONTACT PC BOARD.
- 13 BASELINE FOR THESE DIMENSIONS IS THE CENTER OF COMPLIANT PIN HOLE.
- 14 DATE CODE (YYWWD) MARKED ON TOP OF CAGE AND CONCEALED BY HEAT SINKS APPLIES TO CAGE ASSEMBLY ONLY.

- 15 REFERENCE APP SPEC 114-13218 FOR GASKET THICKNESS CALCULATION.
- 16 EMI SPRING FINISH: 2µm MIN TIN
 FRONT FLANGE FINISH: 3µm MIN TIN OVER 1.27µm MIN NICKEL
 OVER 5.08µm MIN COPPER.
 HEAT SINK FINISH: NICKEL.
- 17 HEAT SINKS AND CLIPS SHIPPED ASSEMBLED TO CAGE ASSEMBLY. CAGE ASSEMBLY MAY BE PRESSED IN TO THE PCB AS SHIPPED. LIGHT PIPES, SHIPPED UNATTACHED, MUST BE ASSEMBLED BY CUSTOMER AFTER THE CAGE IS SEATED IN THE PCB.



	E	D	C	B	HEAT SINK PROFILE	PART NUMBER
7	0.8-1.1	2.0	1.70	23.0	NETWORKING	2057042-8
7	0.8-1.1	2.0	1.70	16.0	SAN	2057042-7
12	0.8-1.1	2.0	1.70	13.7	PCI	2057042-6
7	1.3-1.4	5.7	2.15	16.0	SAN	2057042-5
12	1.3-1.4	5.7	2.15	13.7	PCI	2057042-4
7	0.8-1.1	2.8	1.70	23.0	NETWORKING	2057042-3
7	0.8-1.1	2.8	1.70	16.0	SAN	2057042-2
12	0.8-1.1	2.8	1.70	13.7	PCI	2057042-1

THIS DRAWING IS A CONTROLLED DOCUMENT. DWN: C. VALENTIN 28FEB2008
 CHK: E. BRIGHT 28FEB2008
 APPV: F. BRIGHT 28FEB2008

STE TE Connectivity

NAME: 1X3 CAGE ASSEMBLY, BEHIND BEZEL, W/ LIGHT PIPES AND HEAT SINKS, QSFP

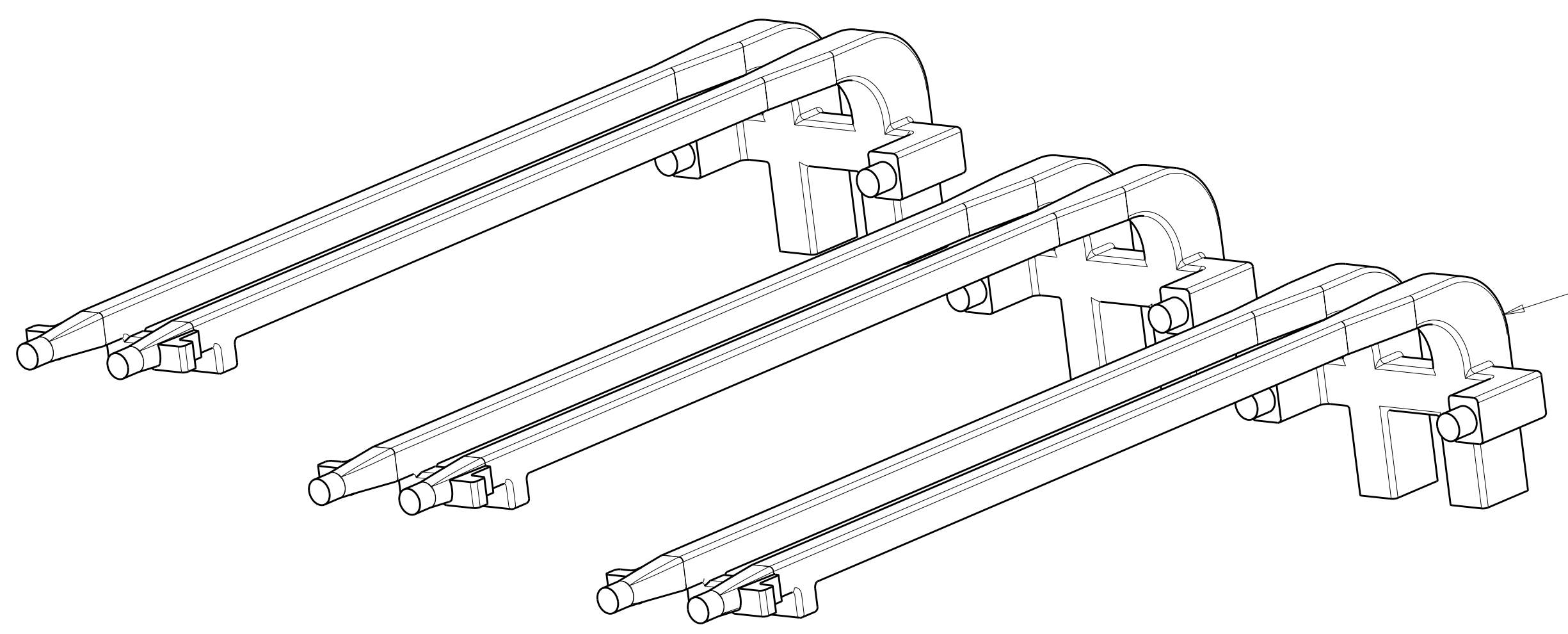
PRODUCT SPEC: 108-2286
 APPLICATION SPEC: 114-13218

SIZE: CAGE CODE DRAWING NO: A100779C=2057042
 RESTRICTED TO: -

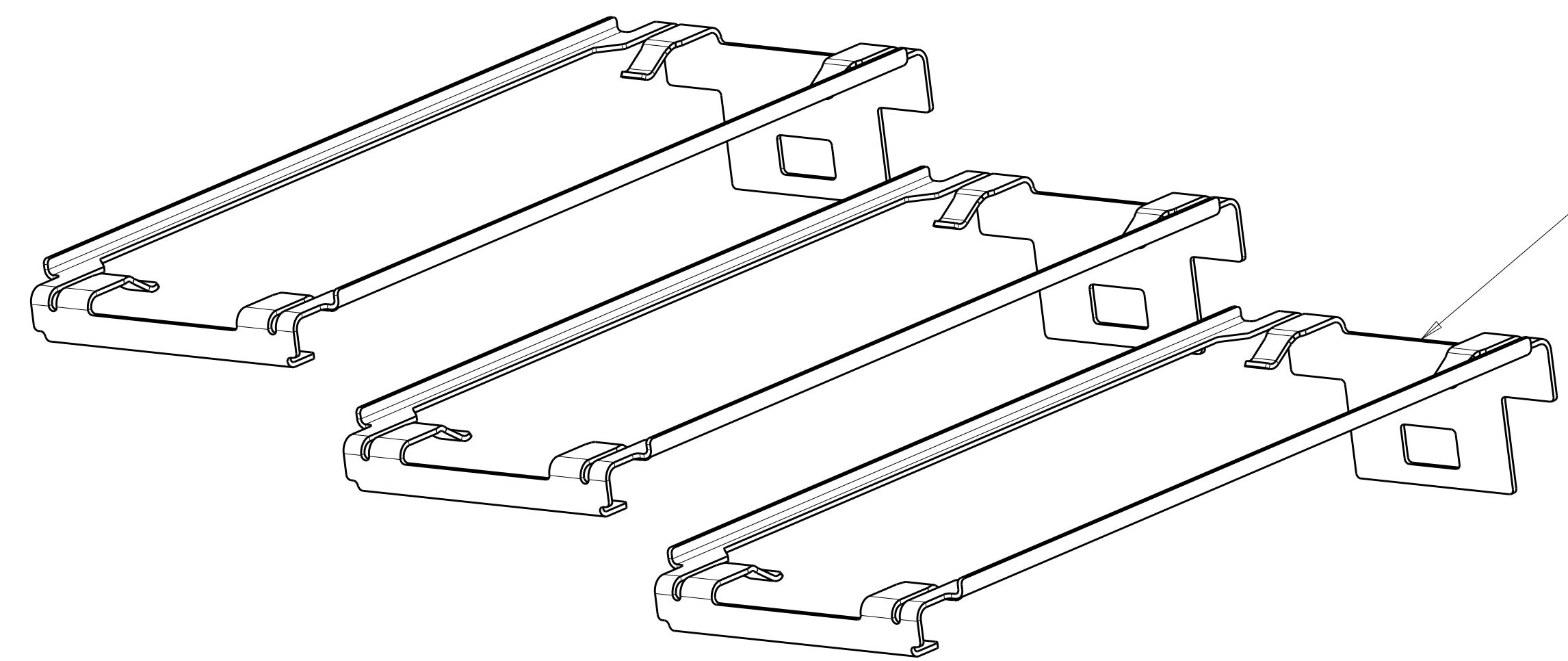
MATERIAL: 9 PLC ±, 1 PLC ±0.1, 3 PLC ±0.1, 5 PLC ±, 4 PLC ±, ANGLES ±, FINISH: 16

CUSTOMER DRAWING SCALE: 4:1 SHEET 1 OF 5 REV D

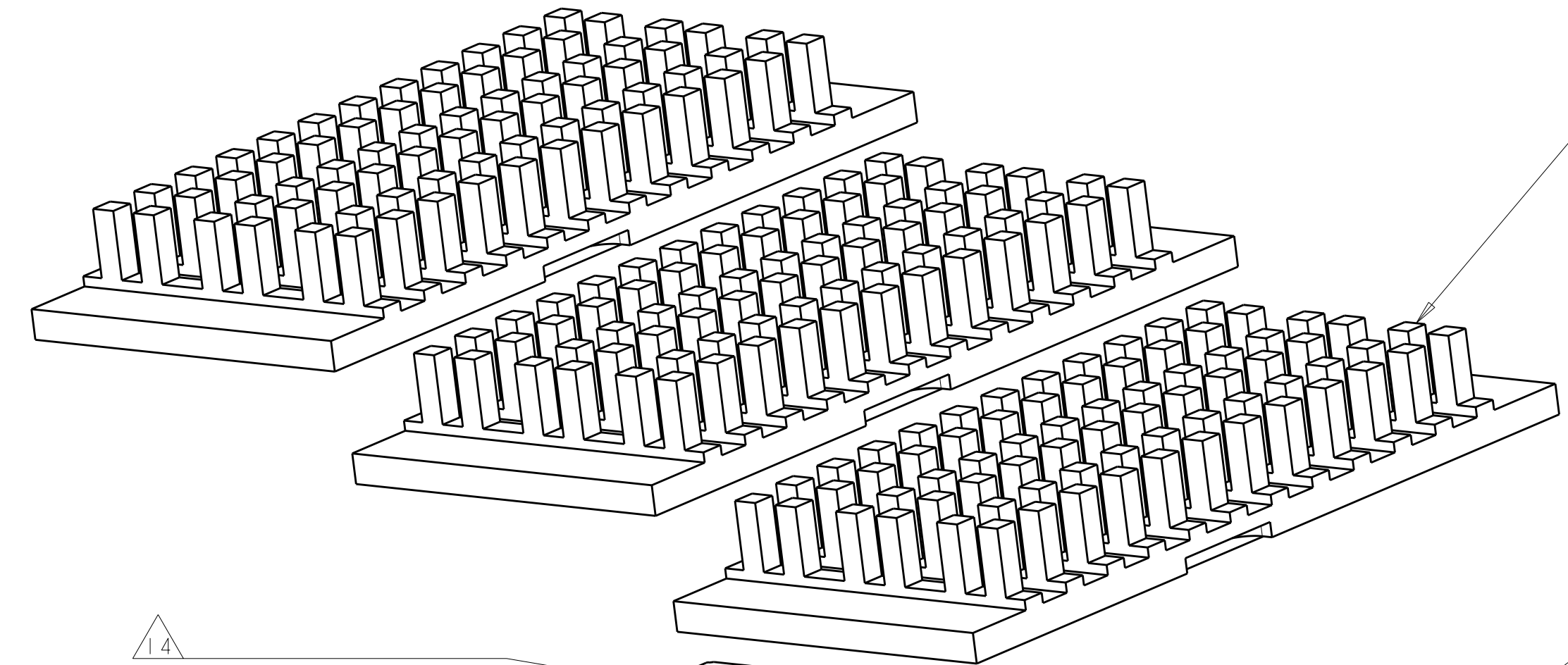
LOC		DIST		REVISIONS			
GP	00	P	LTB	DESCRIPTION	DATE	DWN	APVD
				SEE SHEET 1			



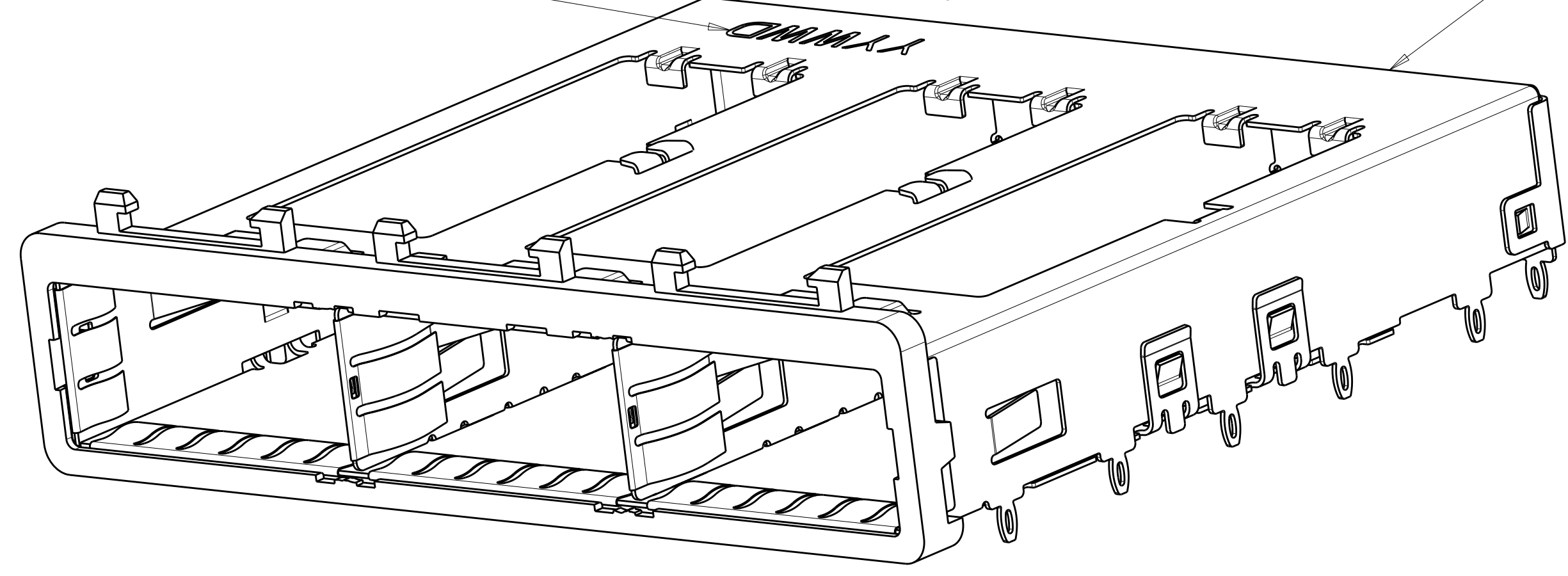
DOUBLE LIGHT PIPES
 QUANTITY: 3



HEAT SINK CLIPS
 QUANTITY: 3



72 PIN HEAT SINKS
 QUANTITY: 3

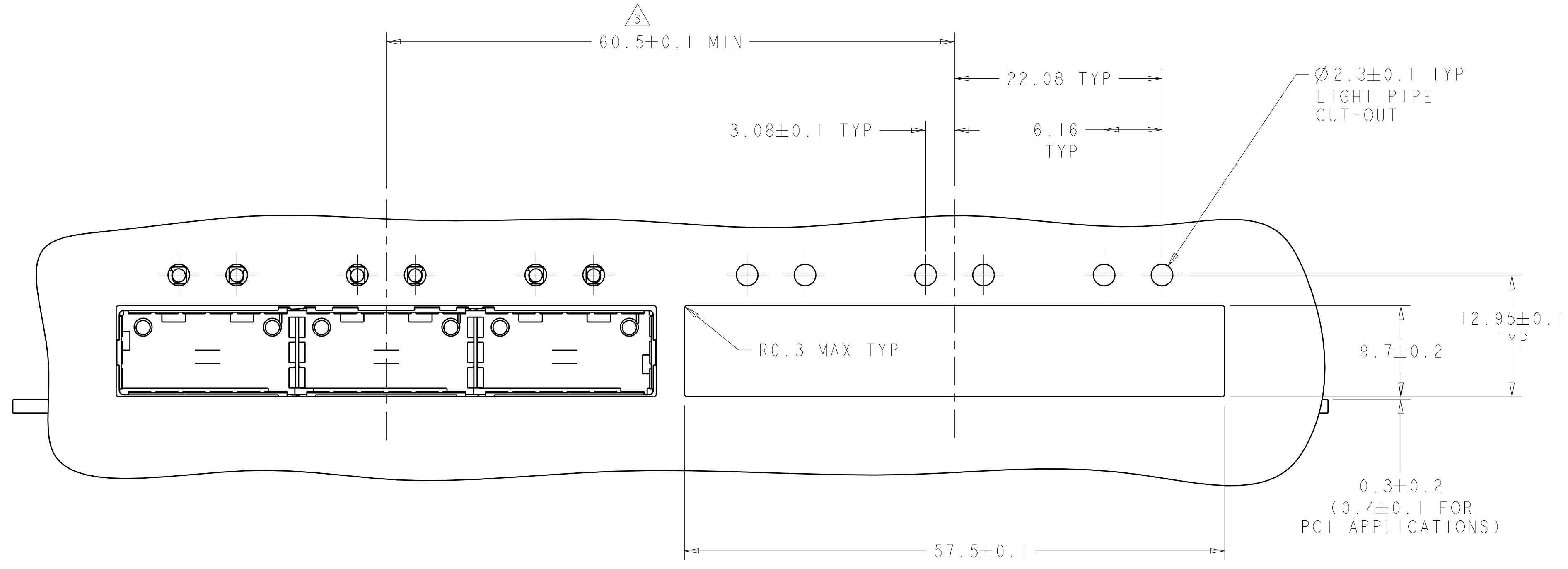


1X3 BEHIND BEZEL QSFP
 CAGE ASSEMBLY
 QUANTITY: 1

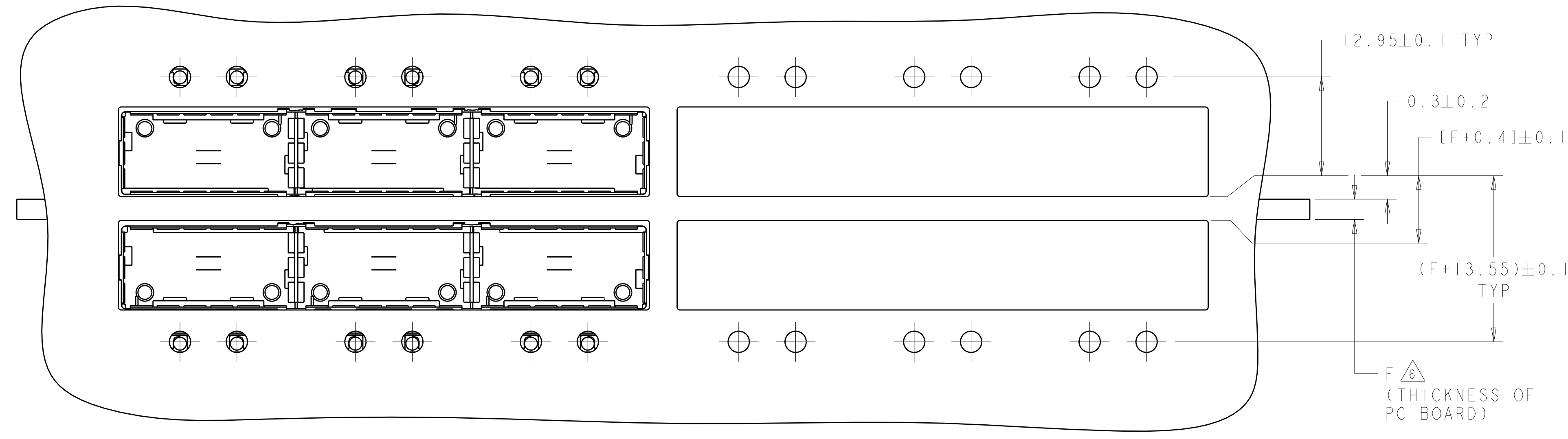
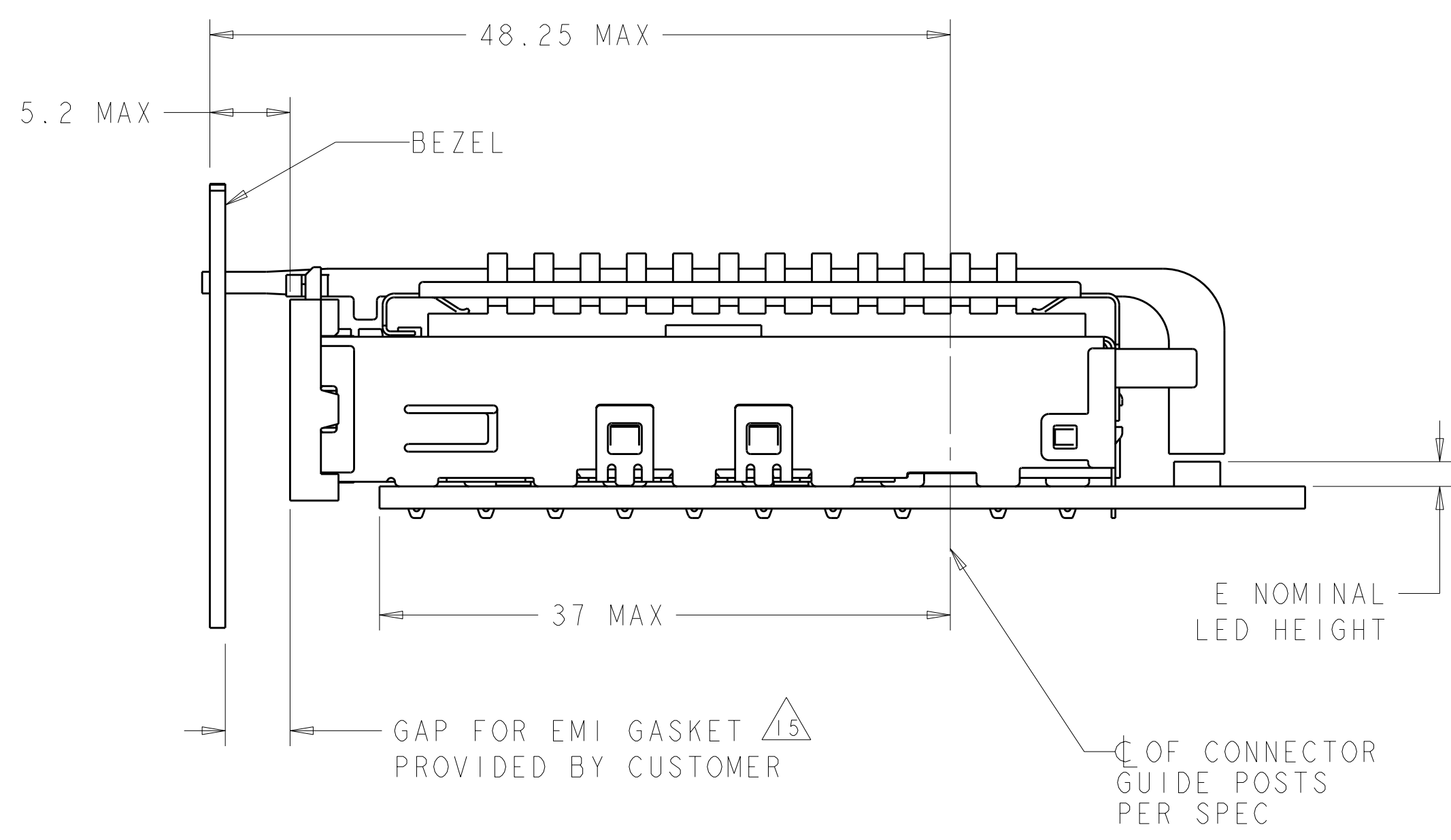
**THIS PRODUCT HAS NOT COMPLETED
 VALIDATION/QUALIFICATION TESTING**

THIS DRAWING IS A CONTROLLED DOCUMENT.		DWN C. VALENTIN 28FEB2008	TE Connectivity NAME 1X3 CAGE ASSEMBLY, BEHIND BEZEL, W/ LIGHT PIPES AND HEAT SINKS, QSFP												
DIMENSIONS: mm		CHK E. BRIGHT 28FEB2008													
TOLERANCES UNLESS OTHERWISE SPECIFIED:		APVD E. BRIGHT 28FEB2008	PRODUCT SPEC												
<table border="1"> <tr><td>9 PLC</td><td>±</td></tr> <tr><td>3 PLC</td><td>±0.1</td></tr> <tr><td>5 PLC</td><td>±0.1</td></tr> <tr><td>4 PLC</td><td>±</td></tr> <tr><td>ANGLES</td><td>±</td></tr> <tr><td>FINISH</td><td>±</td></tr> </table>		9 PLC	±	3 PLC	±0.1	5 PLC	±0.1	4 PLC	±	ANGLES	±	FINISH	±	PRODUCT NO 108-2286	RESTRICTED TO
9 PLC	±														
3 PLC	±0.1														
5 PLC	±0.1														
4 PLC	±														
ANGLES	±														
FINISH	±														
MATERIAL		APPLICATION SPEC 114-13218	SIZE CAGE CODE DRAWING NO												
		WEIGHT	A100779C=2057042												
		CUSTOMER DRAWING	SCALE 4:1 SHEET 2 OF 5 REV D												

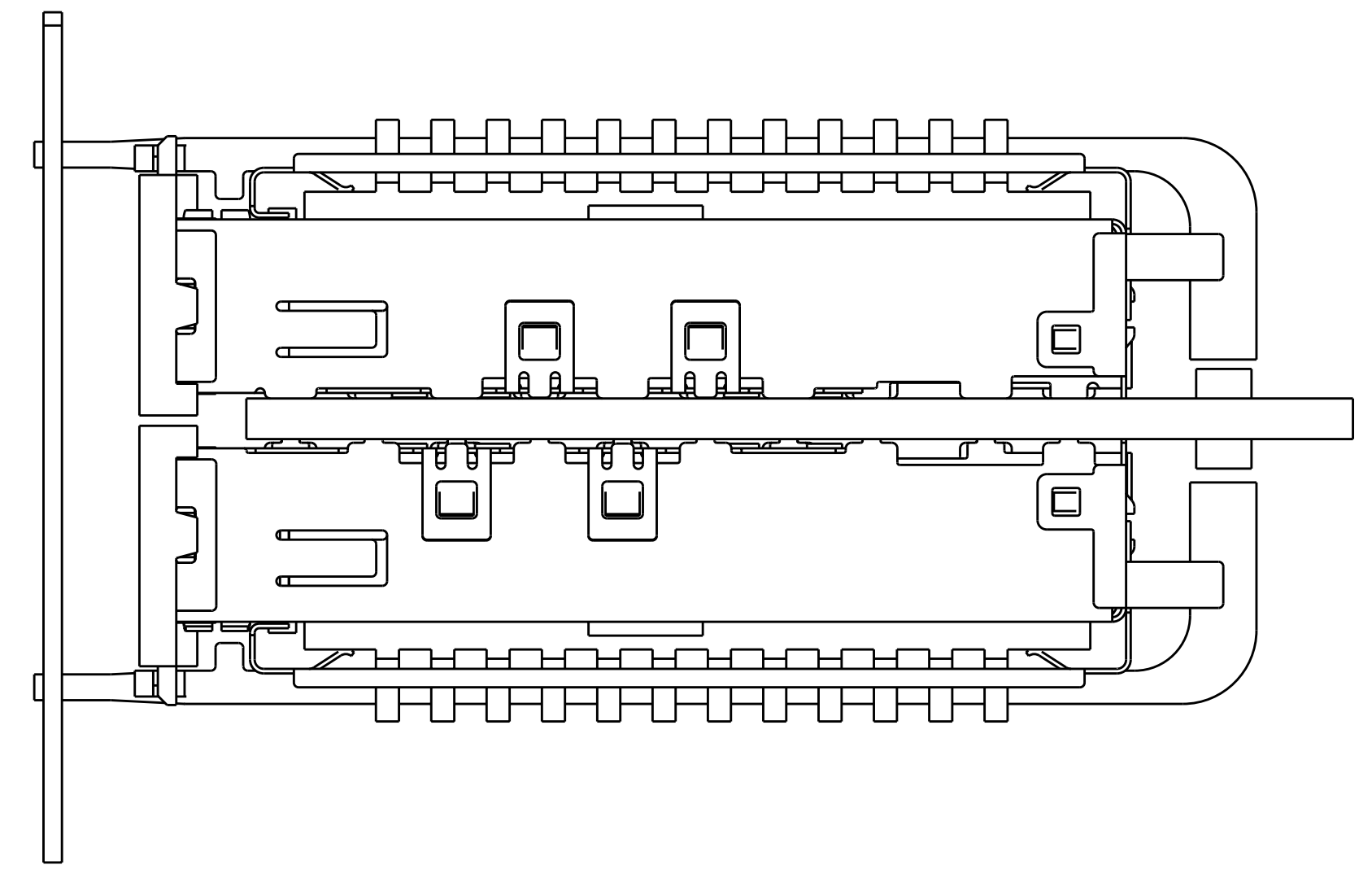
LOC	DIST	REV	DATE	BY	APPD
GP	00				
REVISIONS					



ONE SIDED CONFIGURATION
 SCALE 3:1



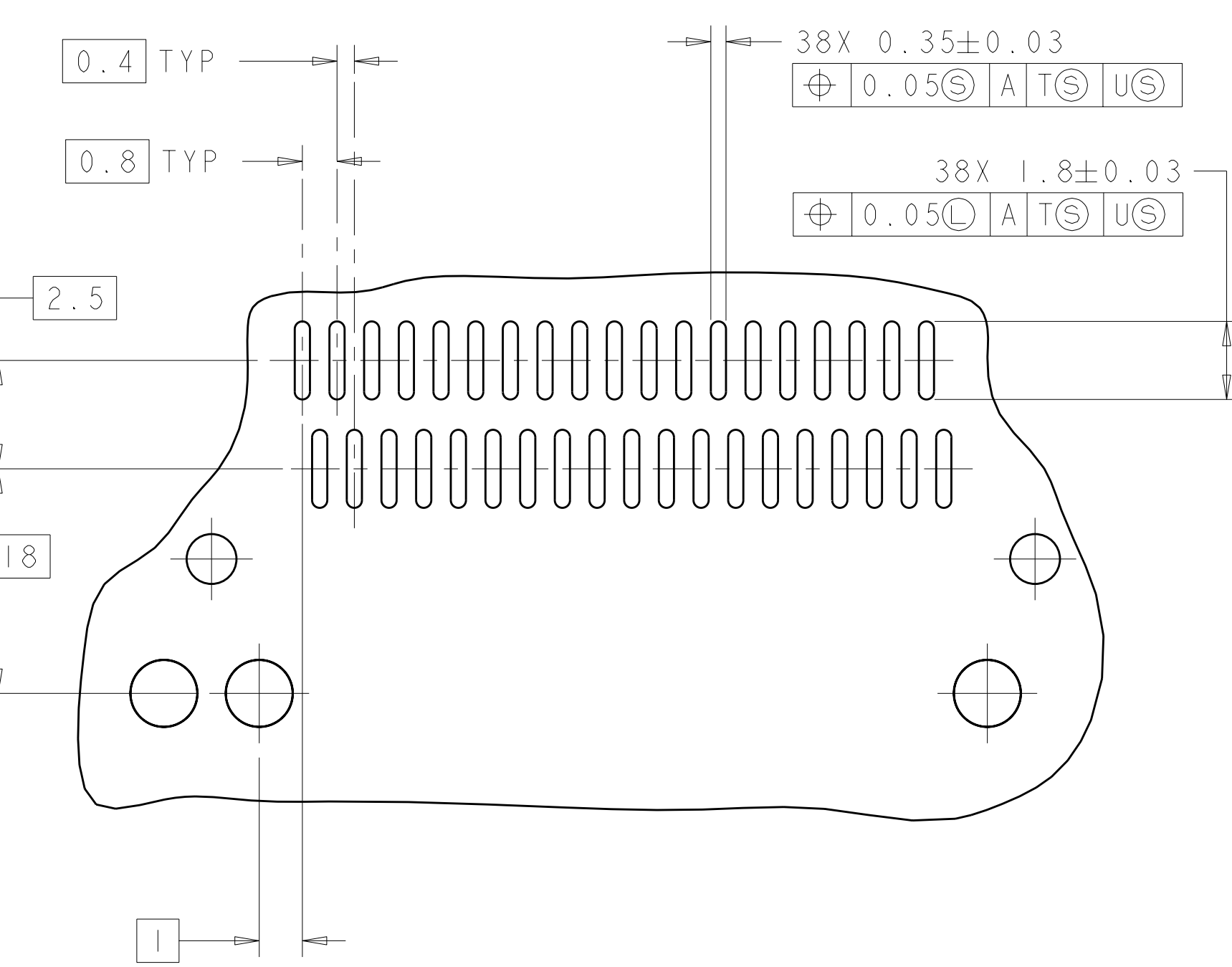
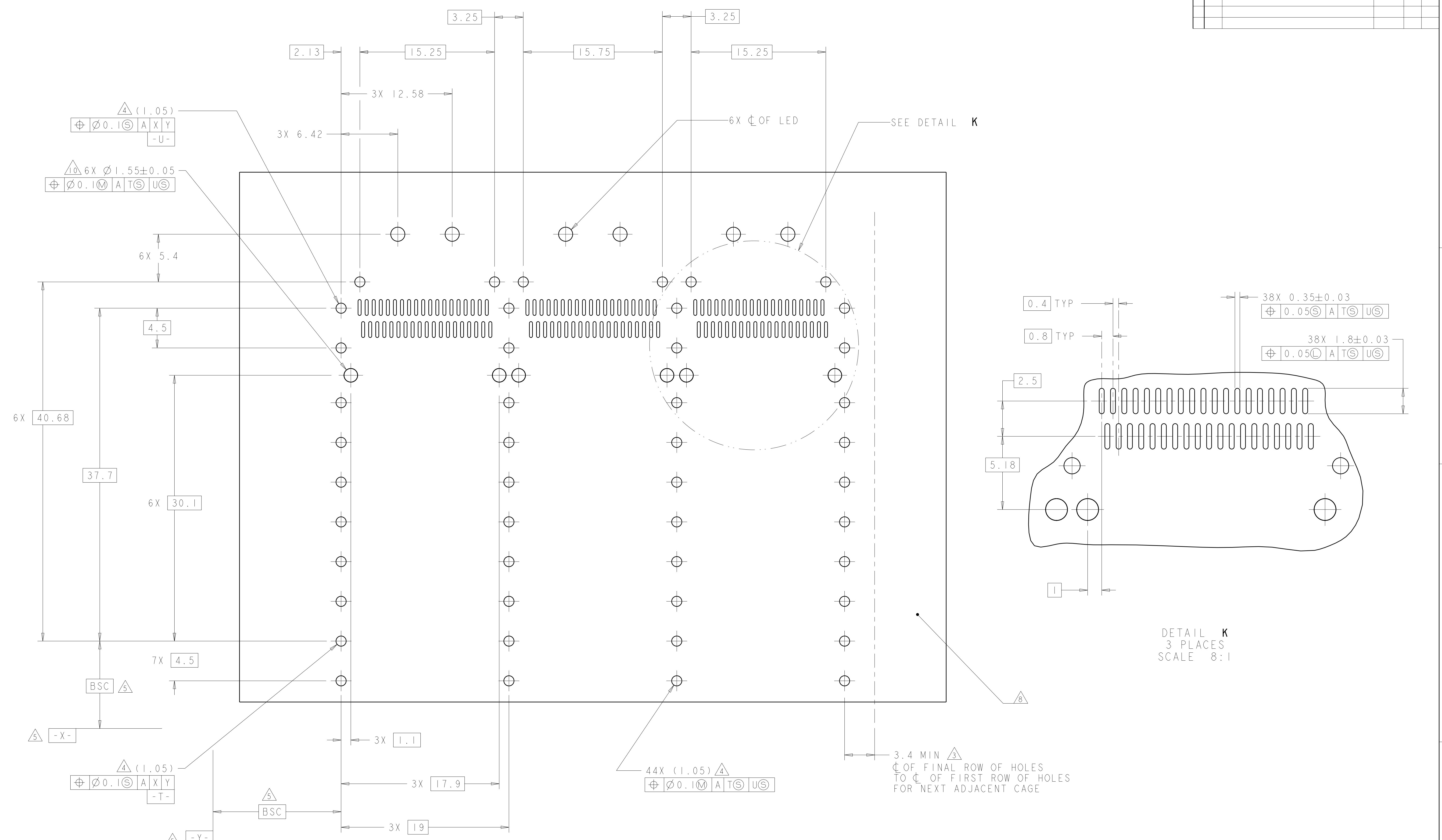
BELLY TO BELLY CONFIGURATION SIMILAR
 TO ONE SIDED EXCEPT WHERE NOTED
 SCALE 3:1



THIS PRODUCT HAS NOT COMPLETED VALIDATION/QUALIFICATION TESTING

THIS DRAWING IS A CONTROLLED DOCUMENT.		DWN C. VALENTIN 28FEB2008	TE Connectivity
DIMENSIONS:		CHK E. BRIGHT 28FEB2008	
TOLERANCES UNLESS OTHERWISE SPECIFIED:		APVD E. BRIGHT 28FEB2008	NAME 1X3 CAGE ASSEMBLY, BEHIND BEZEL, W/ LIGHT PIPES AND HEAT SINKS, QSFP
mm		PRODUCT SPEC	
0 PLC ± 1 PLC ±0.1 2 PLC ±0.1 3 PLC ± 4 PLC ± ANGLES ±		APPLICATION SPEC	SIZE CAGE CODE DRAWING NO A1100779C=2057042
MATERIAL		WEIGHT	
FINISH		CUSTOMER DRAWING	RESTRICTED TO
		SCALE 4:1	SHEET 3 OF 5
			REV D

LOC	DIST	REVISIONS			
GP	00	REV	DATE	BY	APPD
		1	SEE SHEET 1		



DETAIL K
 3 PLACES
 SCALE 8:1

RECOMMENDED PCB BOARD LAYOUT
 BELLY TO BELLY CONFIGURATION
 SEE SHEET 4 FOR COMPONENT
 AND TRACE KEEP-OUTS
 SCALE 5:1

THIS PRODUCT HAS NOT COMPLETED VALIDATION/QUALIFICATION TESTING

THIS DRAWING IS A CONTROLLED DOCUMENT.		DWN C. VALENTINE 28FEB2008	TE Connectivity NAME 1X3 CAGE ASSEMBLY, BEHIND BEZEL, W/ LIGHT PIPES AND HEAT SINKS, QSFP
DIMENSIONS: mm		CHK E. BRIGHT 28FEB2008	
TOLERANCES UNLESS OTHERWISE SPECIFIED:		APVD E. BRIGHT 28FEB2008	PRODUCT SPEC
0 PLC ± 1 PLC ±0.1 2 PLC ±0.1 3 PLC ± 4 PLC ± ANGLES ±		108-2286	APPLICATION SPEC
MATERIAL		114-13218	WEIGHT
FINISH			
		CUSTOMER DRAWING	SCALE 4:1 SHEET 5 OF 5 REV D