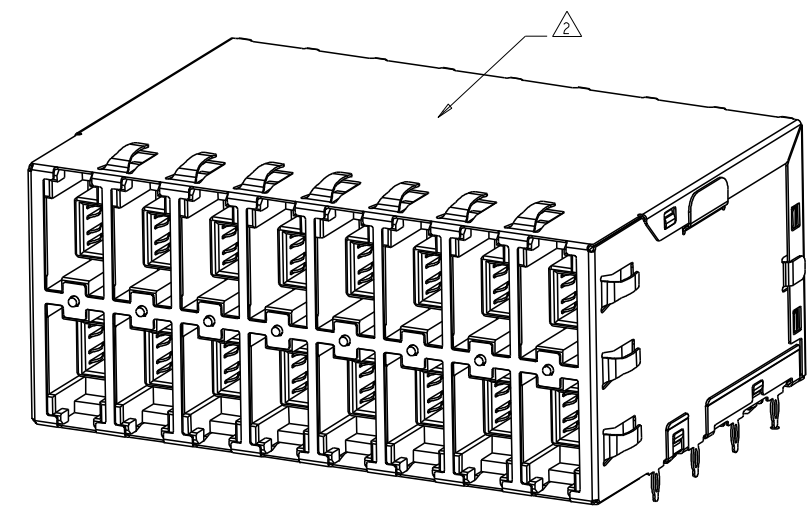
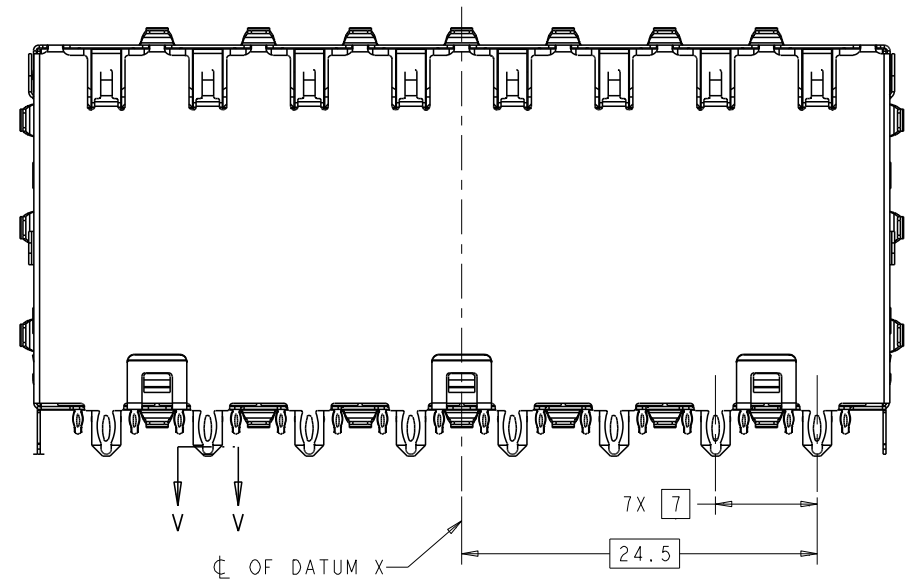
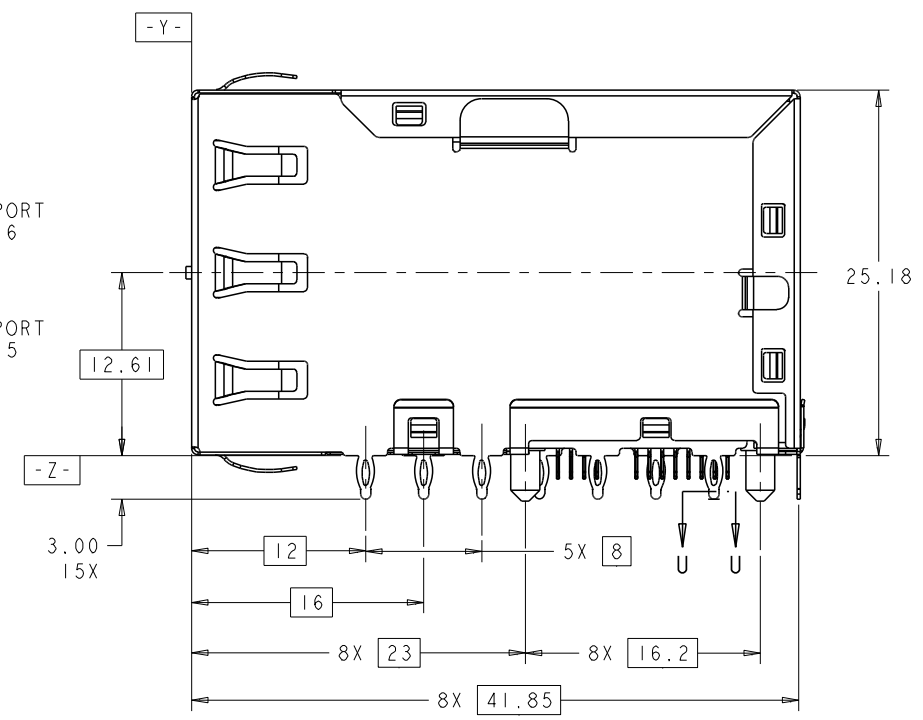
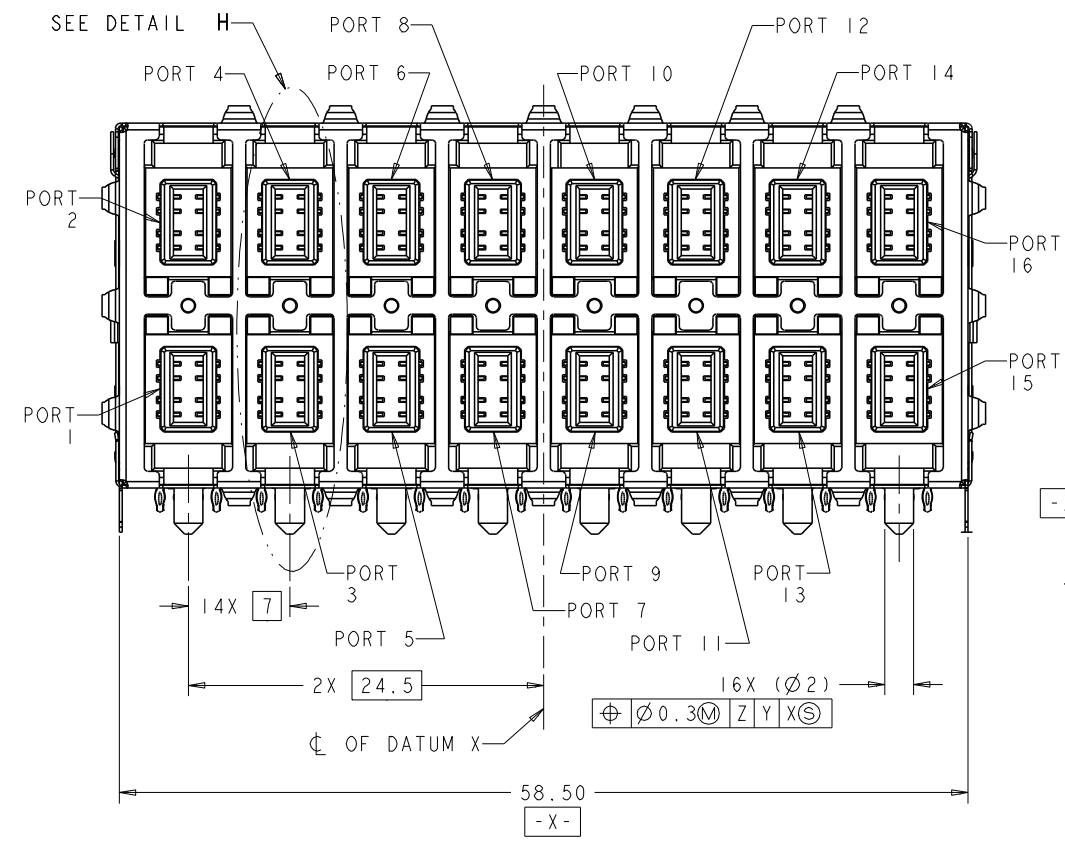
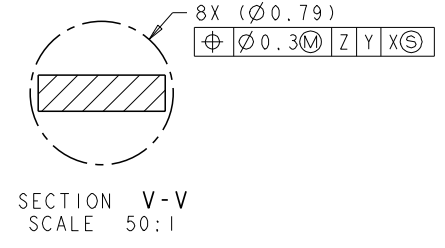
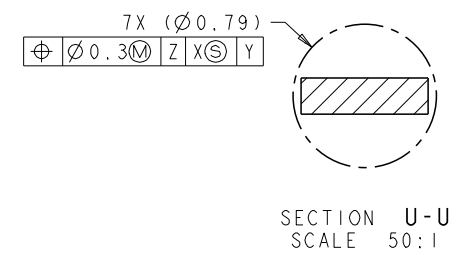


REVISONS		DATE	DWN	APPD
P	LTR	DESCRIPTION		
9		REVISED NOTE 7	28OCT2009	RT RH
A		CHANGE PART STATUS TO ACTIVE EC-1003034	20JUL2010	TR KZ

- MATERIAL:  
 HOUSING: BLACK, THERMOPLASTIC, RATED UL 94V-0.  
 SHIELD: COPPER ALLOY WITH NICKEL PLATING.  
 CONTACTS: PHOSPHOR BRONZE.  
 CONTACT PLATING: 0.05µm MIN GOLD OVER  
 0.76µm MIN PALLADIUM-NICKEL, AT MATING  
 INTERFACE CONTACT AREA.
- TE LOGO, PART NUMBER, DATE CODE AND  
 COUNTRY OF ORIGIN, SHOWN APPROXIMATE AREA.
- LED IS DRIVEN WITH CURRENT AT APPROX 20 mA  
 DOMINANT WAVELENGTH (λD): GREEN 573 nm TYP AT IF=20mA  
 FORWARD VOLTAGE (VF): GREEN 2.0V TYP at IF=20mA  
 DOMINANT WAVELENGTH (λD): RED 624 nm TYP AT IF=20mA  
 FORWARD VOLTAGE (VF): RED 2.0V TYP at IF=20mA  
 DOMINANT WAVELENGTH (λD): YELLOW 589 nm TYP AT IF=20mA  
 FORWARD VOLTAGE (VF): YELLOW 2.0V TYP at IF=20mA
- RECOMMENDED MIN PCB THICKNESS 1.5mm (.062").
- DATUM AND BASIC DIMENSION ESTABLISHED BY CUSTOMER.
- FOR HOLE SIZE AND PLATINGS, SEE SHEET 4.
- APPLICATION 10/100/1000 BASE-T  
 -IMPEDANCE 100 OHMS  
 -PERFORMANCE:  
 ALL PAIRS ARE BI-DIRECTIONAL  
 TIA-568-C.2 CATEGORY 5E COMPLIANT  
 INSERTION LOSS:  
 1 ≤ F ≤ 6.3MHZ = .01dB (MAX)  
 6.3 ≤ F ≤ 100MHZ = .04X SQRT(F)dB (MAX)  
 RETURN LOSS:  
 1 ≤ F ≤ 31.5MHZ = 30dB (MIN)  
 31.5 ≤ F ≤ 100MHZ = 20-(20XLOG(F/100))dB (MIN)  
 NEXT LOSS:  
 1 ≤ F < 7.9MHZ = 65dB (MIN)  
 7.9 ≤ F ≤ 100MHZ = 43-(20XLOG(F/100))dB (MIN)  
 FEXT LOSS:  
 1 ≤ F ≤ 3.2MHZ = 65dB (MIN)  
 3.2 ≤ F ≤ 100MHZ = 35.1-(20XLOG(F/100))dB (MAX)  
 -ISOLATION VOLTAGE: 2250VDC(MAX) FOR 60 SECONDS WITH  
 A RISE TIME OF 500V/SEC.



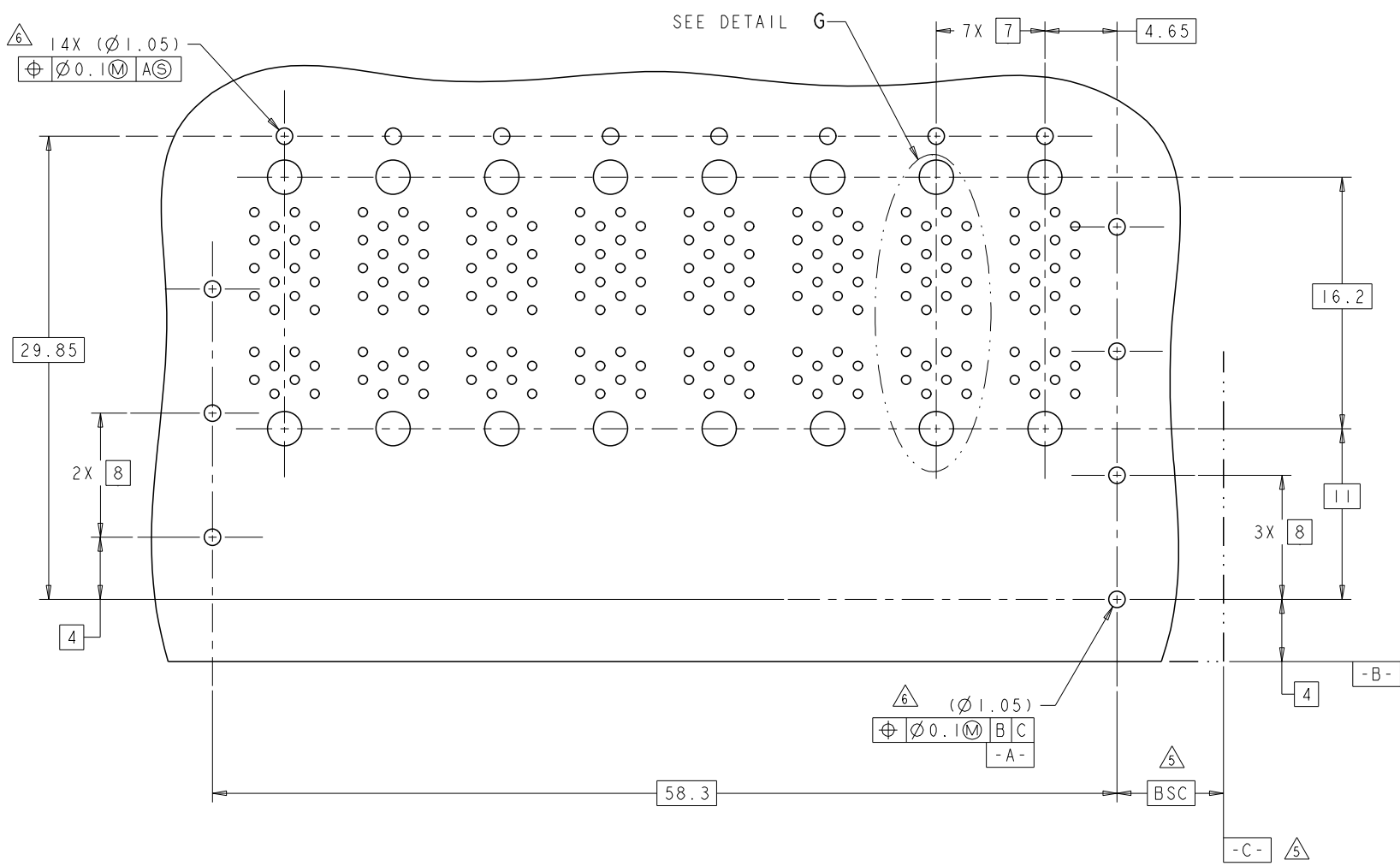
SCALE 3:1



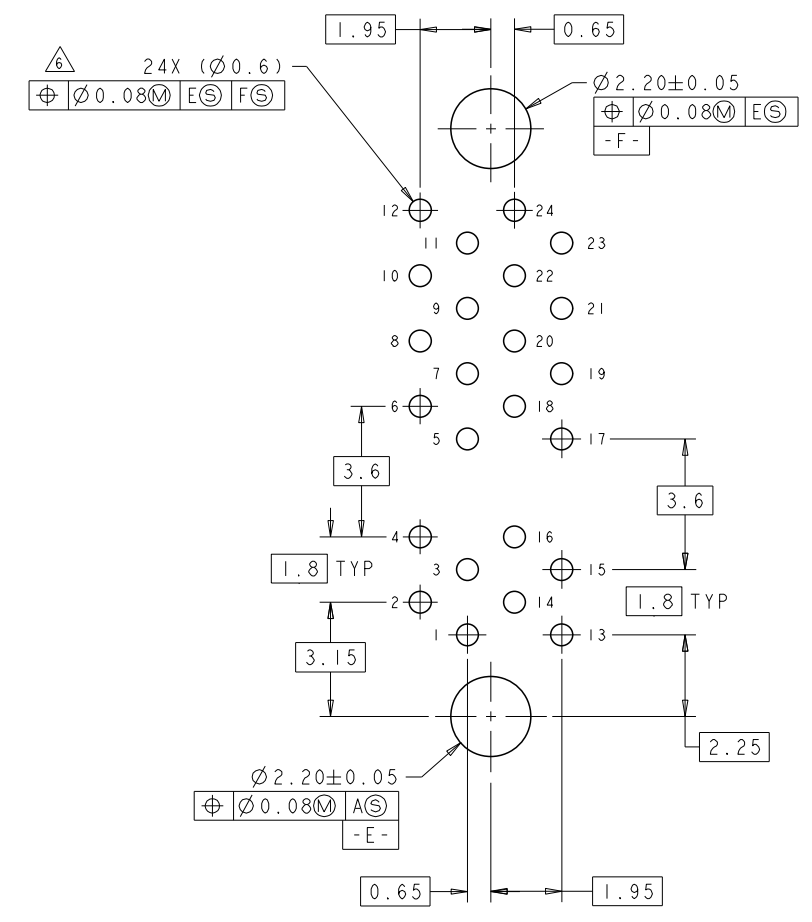
YELLOW/GREEN BI-COLORS	2057133-2
RED/GREEN BI-COLORS	2057133-1
LED COLORS	PART NO

DIMENSIONS: mm 0 PLC ± 1 PLC ±.25 2 PLC ±.25 3 PLC ± 4 PLC ± ANGLES ±.2° FINISH :		TOLERANCES UNLESS OTHERWISE SPECIFIED: DIM: ±.25 HOLE: ±.05 PLATING: ±.05		DWN: M. SHIRK 09APR2008 CHK: R. HENRY 09APR2008 APPD: R. HENRY 09APR2008 PRODUCT SPEC APPLICATION SPEC WEIGHT : CUSTOMER DRAWING		Tyco Electronics Harrisburg, PA 17105-3608 NAME: RECEPTACLE ASSEMBLY, 2X8, NON MAGNETICS, RJ POINT FIVE SIZE: A CASE CODE: 00779 DRAWING NO: 2057133 SCALE: 4:1 SHEET: 1 OF 5 REV: A	
---	--	--	--	--	--	--	--

LOC	Q1ST	REVISIONS			
P	LYR	DESCRIPTION	DATE	DWN	APVD
-	-	SEE SHEET 1	-	-	-



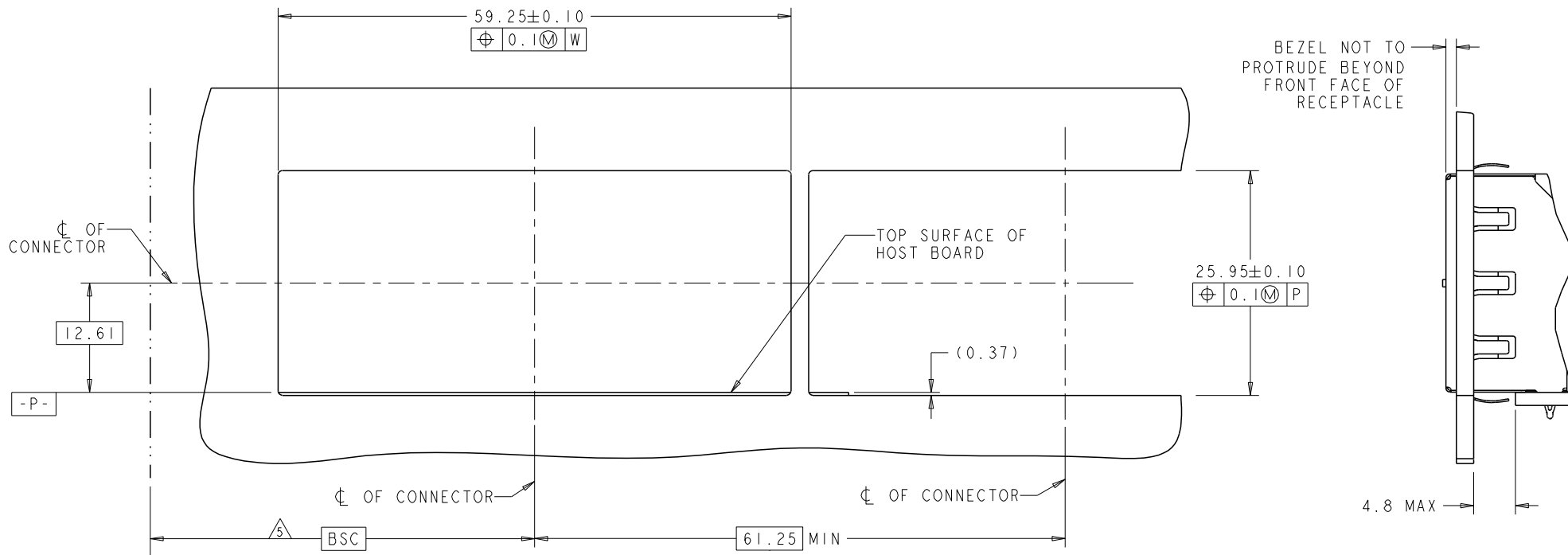
RECOMMENDED PCB LAYOUT  
 SCALE 5:1



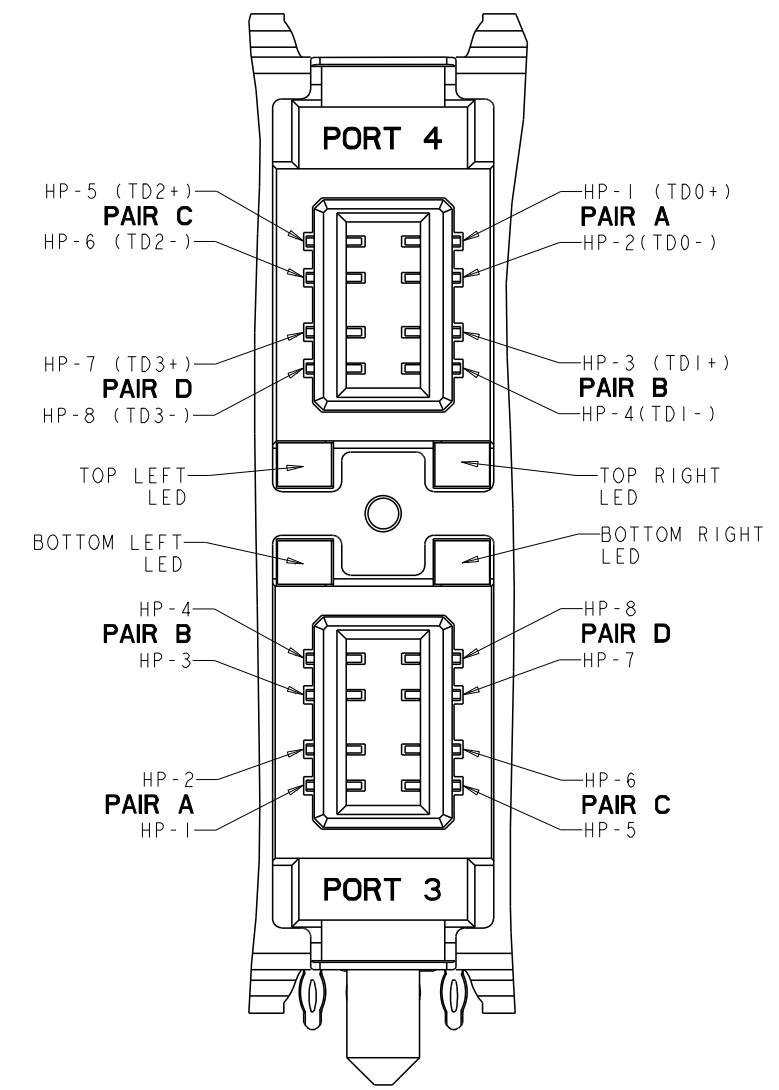
DETAIL G  
 BOARD PIN IDENTIFIERS  
 SCALE 10:1

<small>THIS DRAWING IS A CONTROLLED DOCUMENT FOR TYCO ELECTRONICS CORPORATION                  IT IS SUBJECT TO THE COMPANY'S POLICY ON THE PROTECTION OF INFORMATION                  WHICH IS CONTROLLED FOR THE PROTECTION OF INFORMATION</small>		DWN: M. SHIRK 09APR2008 CHK: R. HENRY 09APR2008 APVD: R. HENRY 09APR2008	Tyco Electronics Tyco Electronics Harrisburg, PA 17105-3608
DIMENSIONS: mm 0 PLC ± 1 PLC ± 2 PLC ±0.25 3 PLC ± 4 PLC ± ANGLES ±0° FINISH	TOLERANCES UNLESS OTHERWISE SPECIFIED: 0 PLC ± 1 PLC ± 2 PLC ±0.25 3 PLC ± 4 PLC ± ANGLES ±0° FINISH	NAME: RECEPTACLE ASSEMBLY, 2X8, NON MAGNETICS, RJ POINT FIVE PRODUCT SPEC APPLICATION SPEC WEIGHT CUSTOMER DRAWING	SIZE: A CASE CODE: 00779 DRAWING NO: 2057133 SCALE: 4:1 SHEET: 2 OF 5 REV: A

LOC	QTY	REVISIONS			
P	LTN	DESCRIPTION	DATE	DWN	APVD
AG	00	SEE SHEET 1			



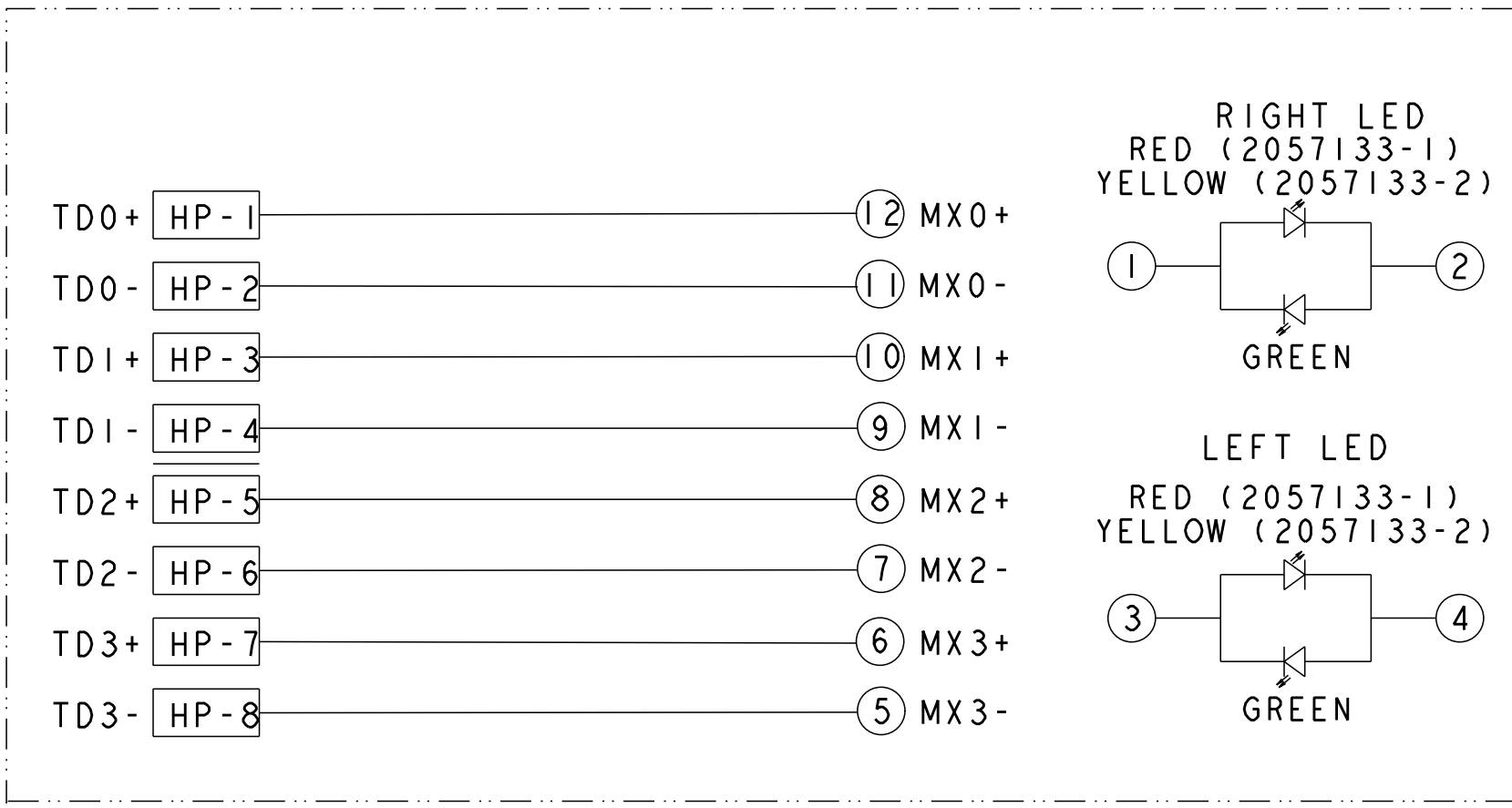
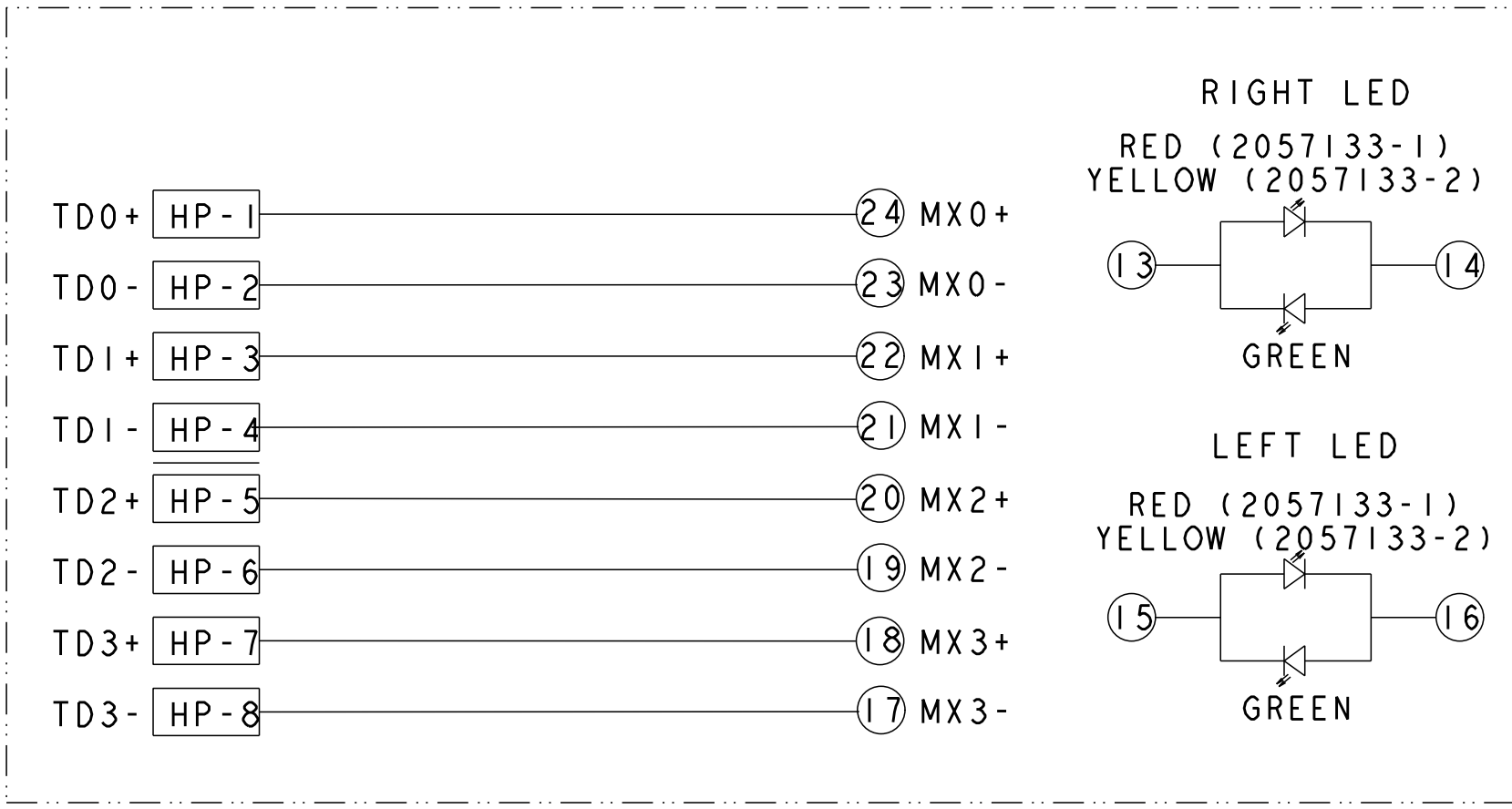
RECOMMENDED PANEL CUTOUT  
 SCALE 3:1



DETAIL H  
 SCALE 10:1

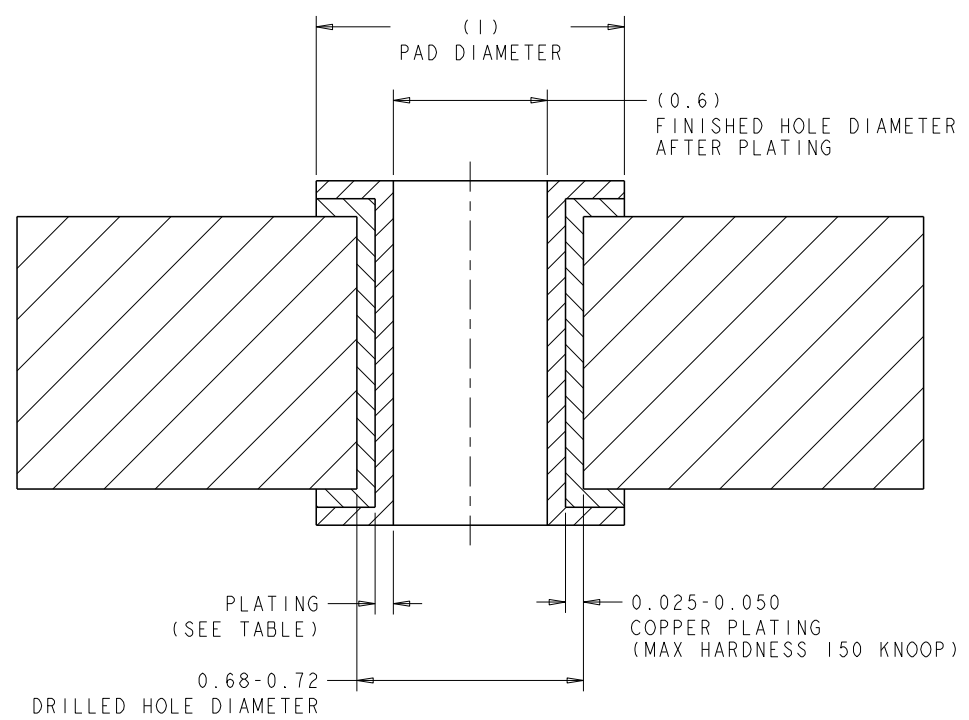
<small>THIS DRAWING IS A CONTROLLED DOCUMENT FOR TYCO ELECTRONICS CORPORATION                  IT IS SUBJECT TO THE TERMS AND CONDITIONS OF THE TYCO ELECTRONICS CORPORATION                  POLICY ON CONTROLLED DOCUMENTS FOR THE PROTECTION OF INFORMATION</small>		DWN: M. SHIRK 09APR2008 CHK: R. HENRY 09APR2008 APVD: R. HENRY 09APR2008	Tyco Electronics Harrisburg, PA 17105-3608
DIMENSIONS: mm 0 PLC ± 1 PLC ± 2 PLC ±0.25 3 PLC ± 4 PLC ± ANGLES ±0° FINISH	TOLERANCES UNLESS OTHERWISE SPECIFIED: 0 PLC ± 1 PLC ± 2 PLC ±0.25 3 PLC ± 4 PLC ± ANGLES ±0° FINISH	NAME: RECEPTACLE ASSEMBLY, 2X8, NON MAGNETICS, RJ POINT FIVE PRODUCT SPEC APPLICATION SPEC WEIGHT CUSTOMER DRAWING	SIZE: A CASE CODE: 00779 DRAWING NO: 2057133 SCALE: 4:1 SHEET: 3 OF 5 REV: A

LOC	QTY	REVISIONS			
P	LTN	DESCRIPTION	DATE	DWN	APPD
AG	00	SEE SHEET 1			

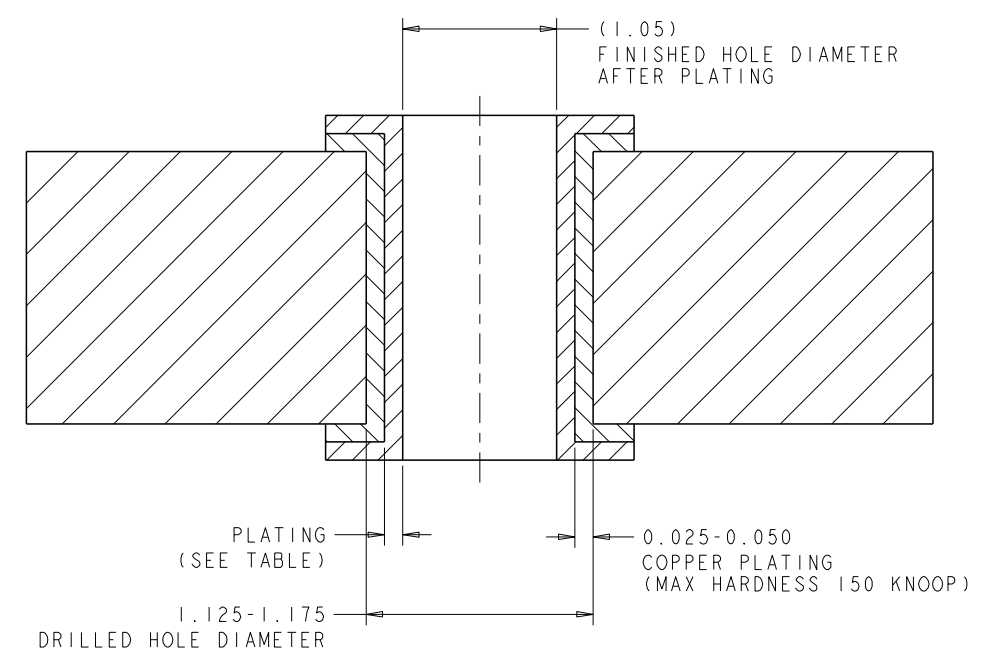


<small>THIS DRAWING IS A CONTROLLED DOCUMENT FOR TYCO ELECTRONICS CORPORATION                  IT IS SUBJECT TO THE TERMS AND CONDITIONS OF THE TYCO ELECTRONICS CORPORATION                  POLICY ON CONTROLLED DOCUMENTS</small>		DWN: M. SHIRK 09APR2008 CHK: R. HENRY 09APR2008 APPD: R. HENRY 09APR2008	Tyco Electronics Harrisburg, PA 17105-3608
DIMENSIONS: mm	TOLERANCES UNLESS OTHERWISE SPECIFIED: 0 PLC ± 1 PLC ± 2 PLC ±0.25 3 PLC ± 4 PLC ± ANGLES ±3° FINISH:	NAME: RECEPTACLE ASSEMBLY, 2X8, NON MAGNETICS, RJ POINT FIVE APPLICATION SPEC:	SIZE: A CASE CODE: 00779 DRAWING NO: 2057133 RESTRICTED TO:
MATERIAL:		WEIGHT:	SCALE: 4:1
CUSTOMER DRAWING		REV: A	SHEET 4 OF 5

LOC	QTY	REVISIONS			
P	LTN	DESCRIPTION	DATE	DWN	APVD
AG	00	SEE SHEET 1			



**RECOMMENDED HOLE DIMENSIONS FOR SIGNAL CONTACTS**



**RECOMMENDED HOLE DIMENSIONS FOR SHIELD PINS**

THICKNESS	PLATING
0.004-0.010	HOT AIR SOLDER LEVELING (HASL) TIN-LEAD (Sn Pb)
0.0005-0.001	IMMERSION TIN (Sn)
0.0002-0.0005	ORGANIC SOLDERABILITY PRESERVATIVE (OSP)
0.0001-0.0005 Au, 0.004-0.0076 Ni	IMMERSION GOLD (Au) OVER NICKEL (Ni) (ENIG)
0.010-0.025	TIN LEAD PLATING (Sn Pb)
0.0001-0.00015	IMMERSION SILVER (Ag)

<small>THIS DRAWING IS A CONTROLLED DOCUMENT FOR TYCO ELECTRONICS CORPORATION                  IT IS SUBJECT TO THE PROVISIONS OF THE TYCO ELECTRONICS CORPORATION                  PATENT, TRADE SECRET AND PROPRIETARY INFORMATION POLICY</small>		DWN: M. SHIRK 09APR2008 CHK: R. HENRY 09APR2008 APVD: R. HENRY 09APR2008	Tyco Electronics Tyco Electronics Harrisburg, PA 17105-3608
DIMENSIONS: mm 0 PLC ± 1 PLC ± 2 PLC ±0.25 3 PLC ± 4 PLC ± ANGLES ±1° FINISH	TOLERANCES UNLESS OTHERWISE SPECIFIED: ± ±0.25 ± ±	NAME: RECEPTACLE ASSEMBLY, 2X8, NON MAGNETICS, RJ POINT FIVE PRODUCT SPEC APPLICATION SPEC WEIGHT	SIZE: A CASE CODE: 00779 DRAWING NO: 2057133 RESTRICTED TO: A
MATERIAL:		CUSTOMER DRAWING	SCALE: 4:1 SHEET: 5 OF 5 REV: A