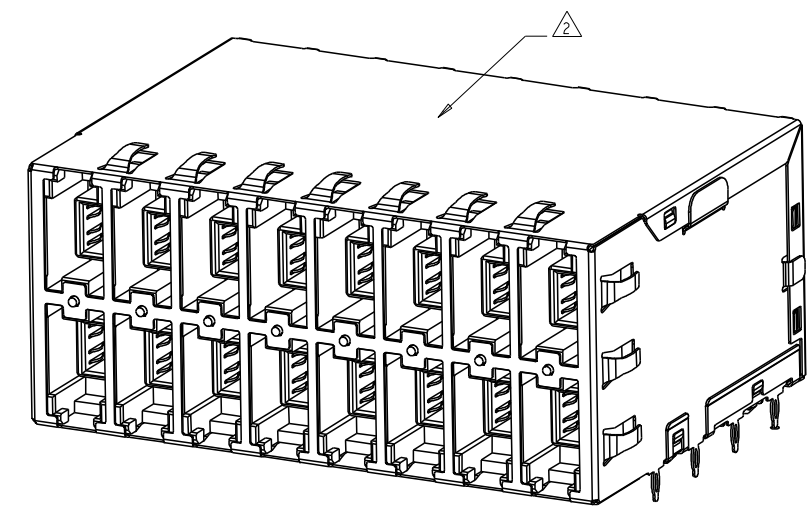
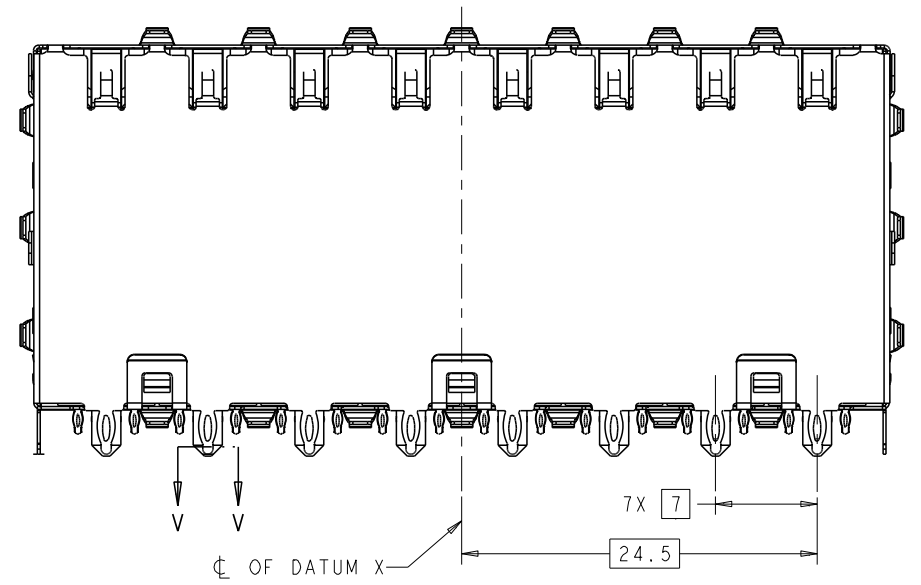
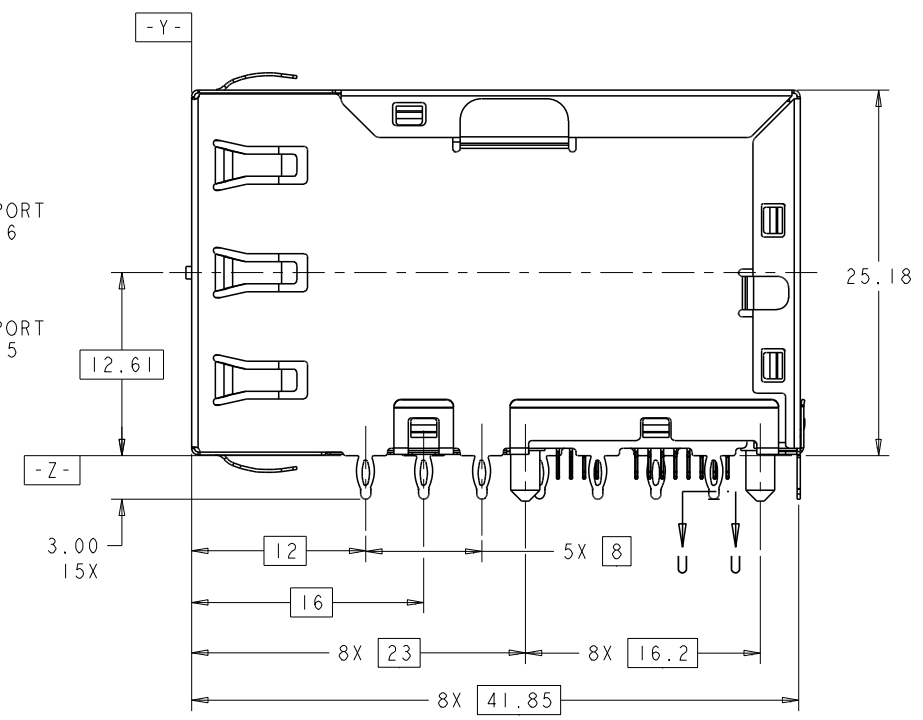
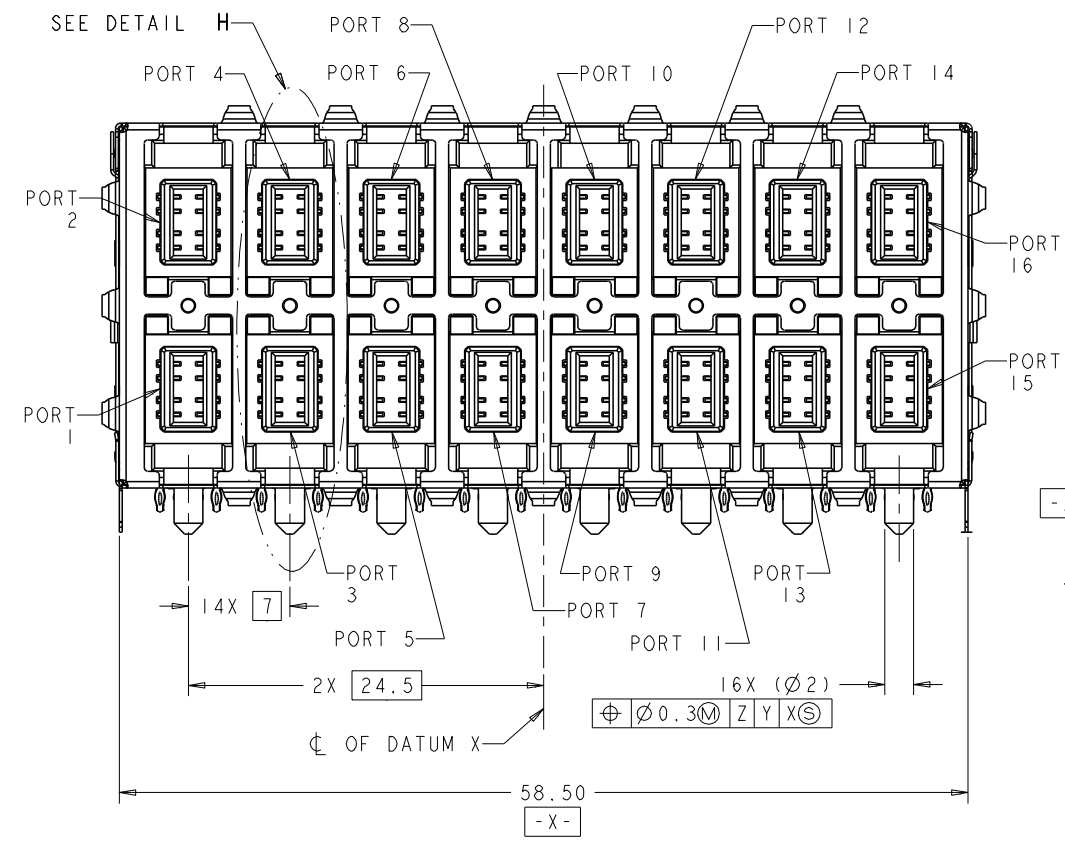
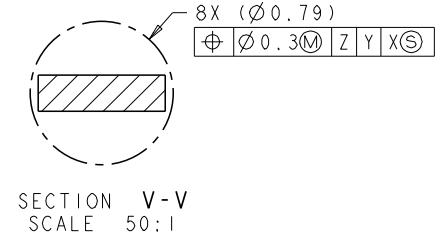
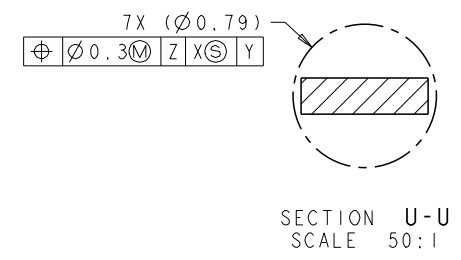


LOC		DIST		REVISIONS			
P	LTN	DESCRIPTION	DATE	DWN	APPD		
9		REVISED NOTE 7	29OCT2009	RT	RH		
A		CHANGE PART STATUS TO ACTIVE EC-1003034	29JUL2010	TR	KZ		

- MATERIAL:  
 HOUSING: BLACK, THERMOPLASTIC, RATED UL 94V-0.  
 SHIELD: COPPER ALLOY WITH NICKEL PLATING.  
 CONTACTS: PHOSPHOR BRONZE.  
 CONTACT PLATING: 0.05µm MIN GOLD OVER  
 0.76µm MIN PALLADIUM-NICKEL, AT MATING  
 INTERFACE CONTACT AREA.
- TE LOGO, PART NUMBER, DATE CODE AND  
 COUNTRY OF ORIGIN, SHOWN APPROXIMATE AREA.
- LED IS DRIVEN WITH CURRENT AT APPROX 20 mA  
 DOMINANT WAVELENGTH (λD): GREEN 573 nm TYP AT IF=20mA  
 FORWARD VOLTAGE (VF): GREEN 2.0V TYP at IF=20mA  
 DOMINANT WAVELENGTH (λD): RED 624 nm TYP AT IF=20mA  
 FORWARD VOLTAGE (VF): RED 2.0V TYP at IF=20mA  
 DOMINANT WAVELENGTH (λD): YELLOW 589 nm TYP AT IF=20mA  
 FORWARD VOLTAGE (VF): YELLOW 2.0V TYP at IF=20mA
- RECOMMENDED MIN PCB THICKNESS 1.5mm (.062").
- DATUM AND BASIC DIMENSION ESTABLISHED BY CUSTOMER.
- FOR HOLE SIZE AND PLATINGS, SEE SHEET 4.
- APPLICATION 10/100/1000 BASE-T  
 -IMPEDANCE 100 OHMS  
 -PERFORMANCE:  
 ALL PAIRS ARE BI-DIRECTIONAL  
 T1A-568-C.2 CATEGORY 5E COMPLIANT  
 INSERTION LOSS:  
 1 ≤ F ≤ 6.3MHZ = .01dB (MAX)  
 6.3 ≤ F ≤ 100MHZ = .04X SQRT(F)dB (MAX)  
 RETURN LOSS:  
 1 ≤ F ≤ 31.5MHZ = 30dB (MIN)  
 31.5 ≤ F ≤ 100MHZ = 20-(20XLOG(F/100))dB (MIN)  
 NEXT LOSS:  
 1 ≤ F < 7.9MHZ = 65dB (MIN)  
 7.9 ≤ F ≤ 100MHZ = 43-(20XLOG(F/100))dB (MIN)  
 NEXT LOSS:  
 1 ≤ F ≤ 3.2MHZ = 65dB (MIN)  
 3.2 ≤ F ≤ 100MHZ = 35.1-(20XLOG(F/100))dB (MAX)  
 -ISOLATION VOLTAGE: 2250VDC(MAX) FOR 60 SECONDS WITH  
 A RISE TIME OF 500V/SEC.



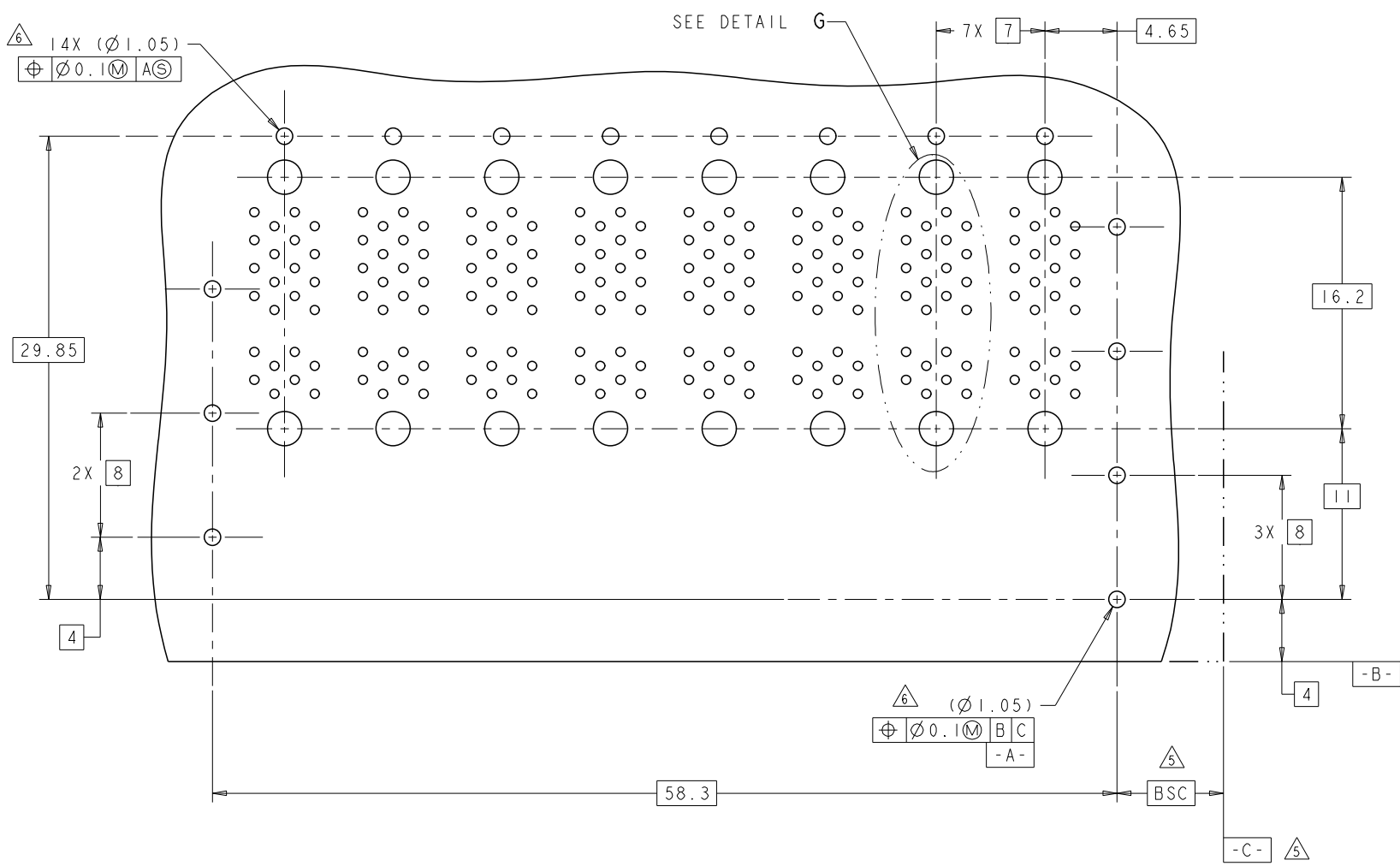
SCALE 3:1



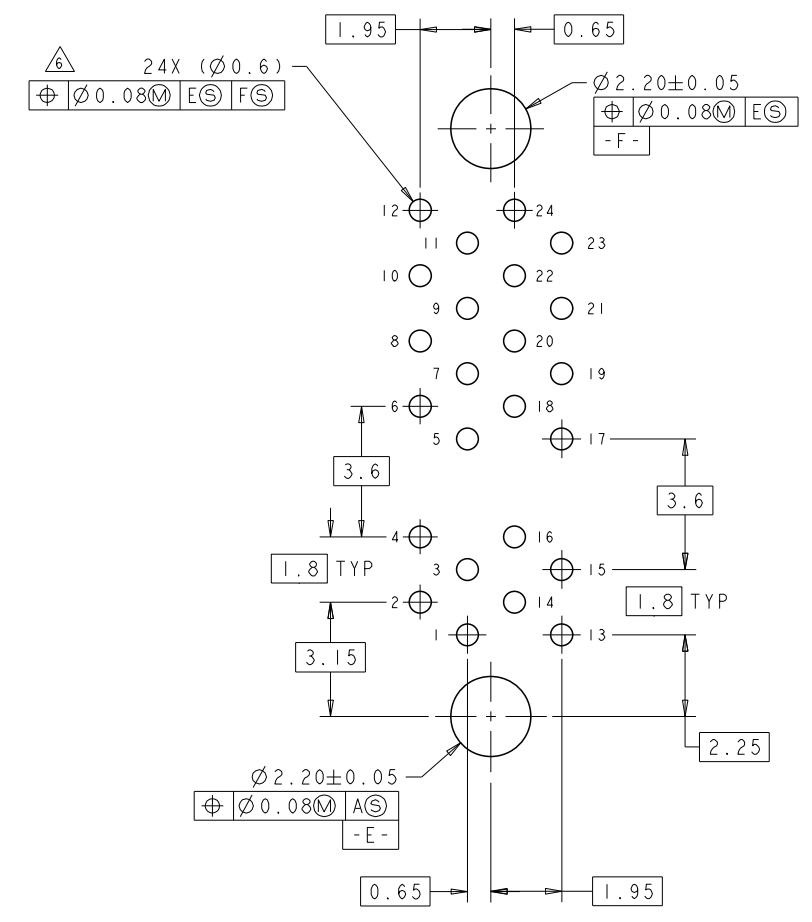
YELLOW/GREEN BI-COLORS	2057133-2
RED/GREEN BI-COLORS	2057133-1
LED COLORS	PART NO

DIMENSIONS: mm 0 PLC ± 1 PLC ±.25 2 PLC ±.25 3 PLC ± 4 PLC ± ANGLES ±°		TOLERANCES UNLESS OTHERWISE SPECIFIED: DIM: ±.25 HOLE: ±.25 FINISH: ±.25		DWN: M. SHIRK 09APR2008 CHK: R. HENRY 09APR2008 APPD: R. HENRY 09APR2008		Tyco Electronics Harrisburg, PA 17105-3608	
NAME: RECEPTACLE ASSEMBLY, 2X8, NON MAGNETICS, RJ POINT FIVE				SIZE: A CASE CODE: 00779 DRAWING NO: 2057133		RESTRICTED TO: - SHEET 1 OF 5 REV A	
MATERIAL: - FINISH: -				WEIGHT: - CUSTOMER DRAWING		SCALE: 4:1	

LOC	QTY	REVISIONS	DATE	DWN	APPD
AG	00				
		SEE SHEET 1			



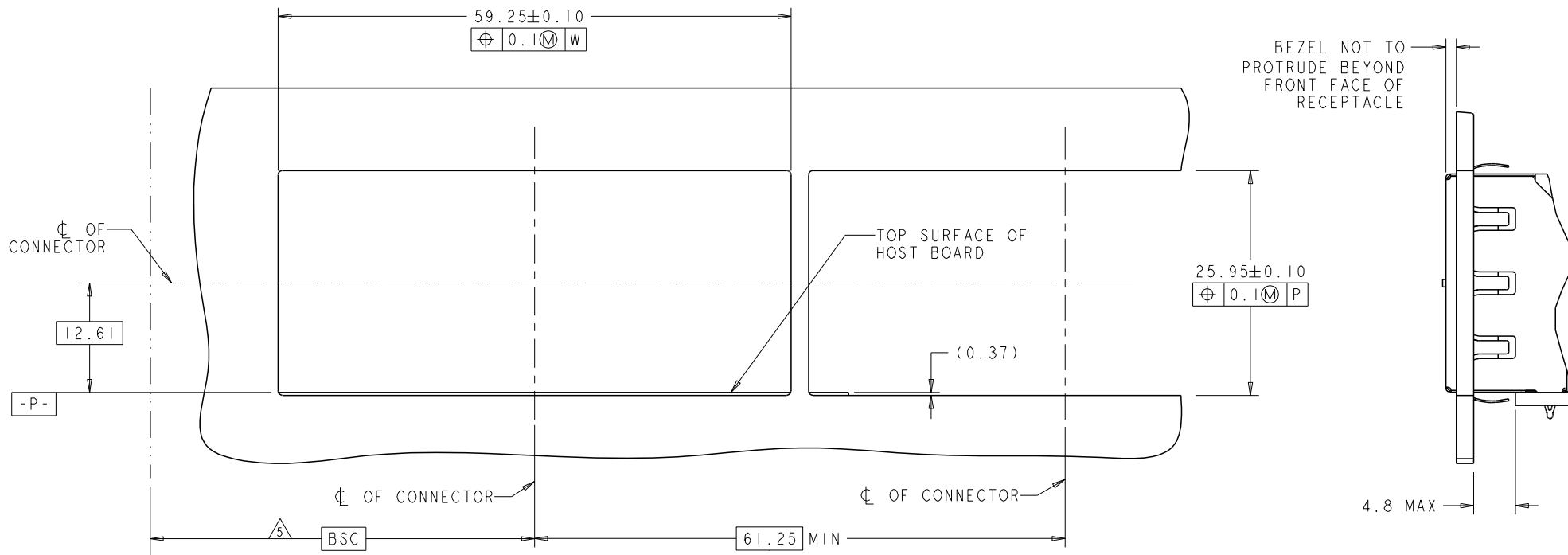
RECOMMENDED PCB LAYOUT  
 SCALE 5:1



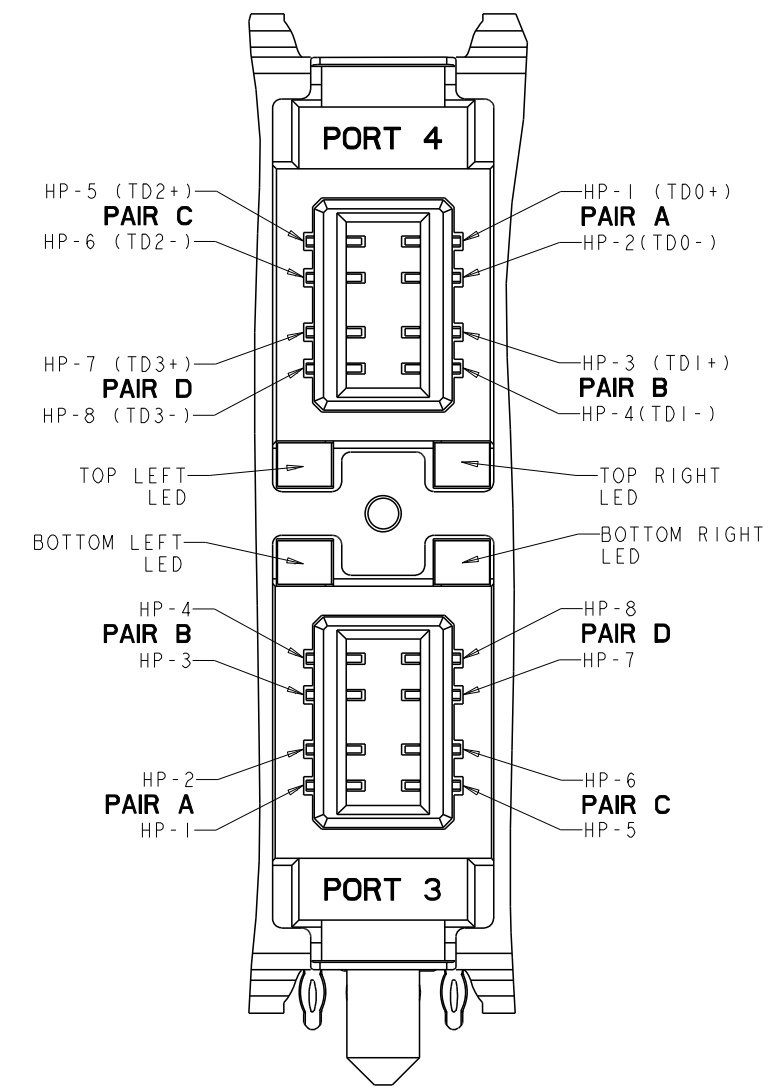
DETAIL G  
 BOARD PIN IDENTIFIERS  
 SCALE 10:1

<small>THIS DRAWING IS A CONTROLLED DOCUMENT FOR TYCO ELECTRONICS CORPORATION                  IT IS SUBJECT TO THE COMPANY'S POLICY ON THE PROTECTION OF INFORMATION                  WHICH IS CONTROLLED FOR THE PROTECTION OF INFORMATION</small>		DWN: M. SHIRK 09APR2008 CHK: R. HENRY 09APR2008 APPD: R. HENRY 09APR2008	Tyco Electronics Tyco Electronics Harrisburg, PA 17105-3608
DIMENSIONS: mm 0 PLC ± 1 PLC ± 2 PLC ±0.25 3 PLC ± 4 PLC ± ANGLES ±0° FINISH	TOLERANCES UNLESS OTHERWISE SPECIFIED: 0 PLC ± 1 PLC ± 2 PLC ±0.25 3 PLC ± 4 PLC ± ANGLES ±0° FINISH	NAME: RECEPTACLE ASSEMBLY, 2X8, NON MAGNETICS, RJ POINT FIVE PRODUCT SPEC APPLICATION SPEC WEIGHT CUSTOMER DRAWING	SIZE: A CASE CODE: 00779 DRAWING NO: 2057133 SCALE: 4:1 SHEET: 2 OF 5 REV: A

LOC	QTY	REV	DESCRIPTION	DATE	DWN	APVD
AG	00		SEE SHEET 1			



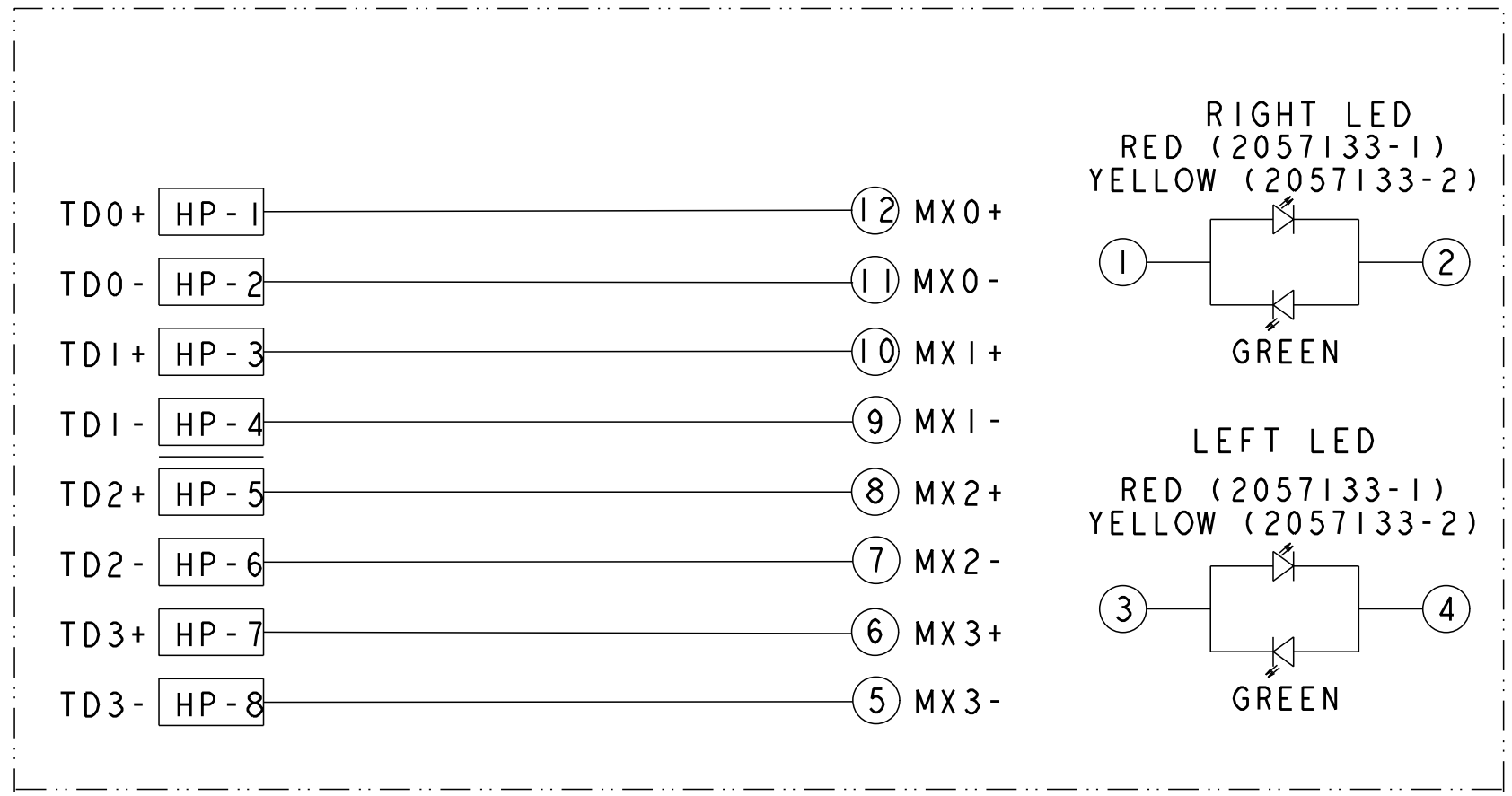
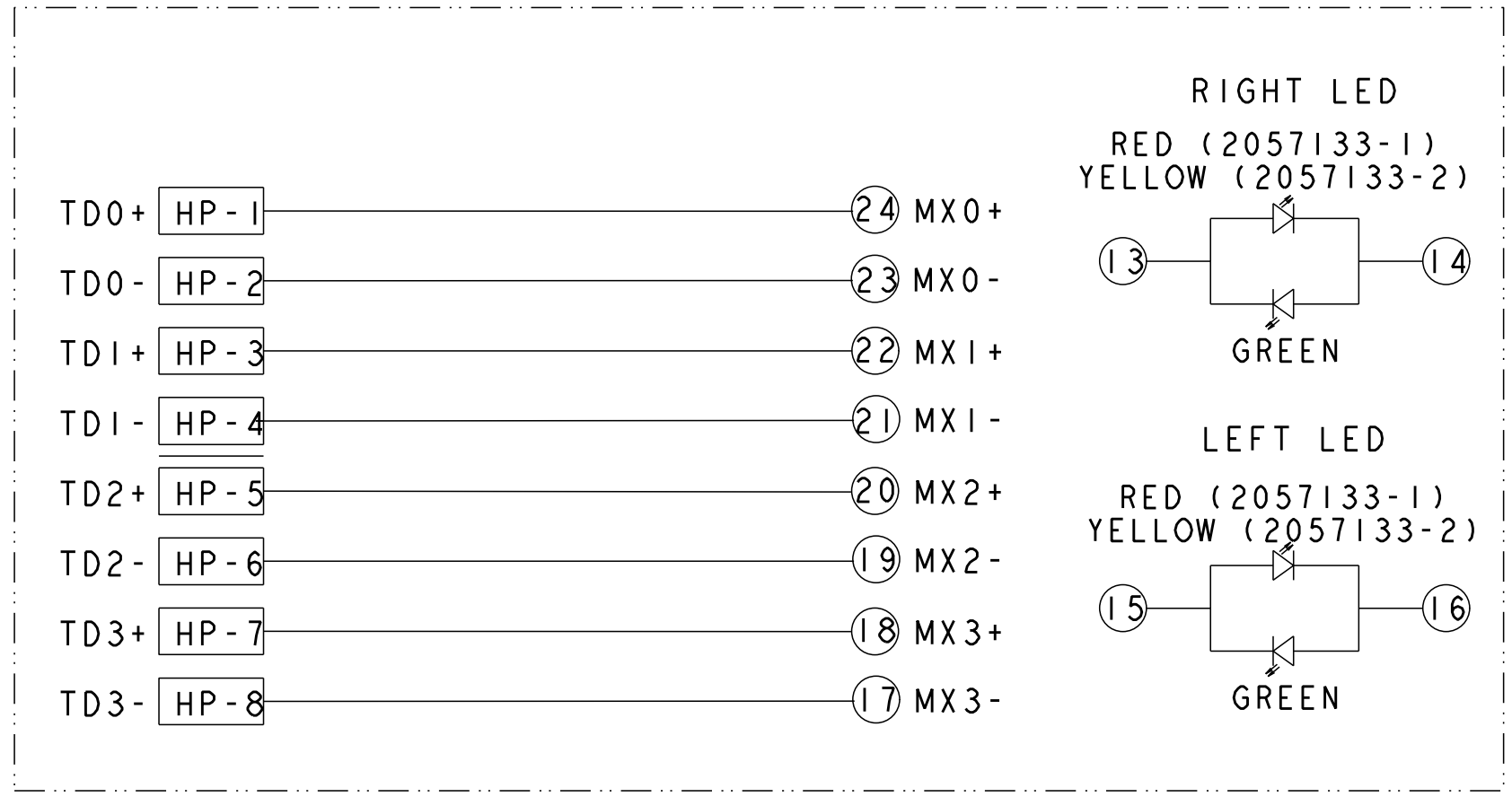
RECOMMENDED PANEL CUTOUT  
 SCALE 3:1



DETAIL H  
 SCALE 10:1

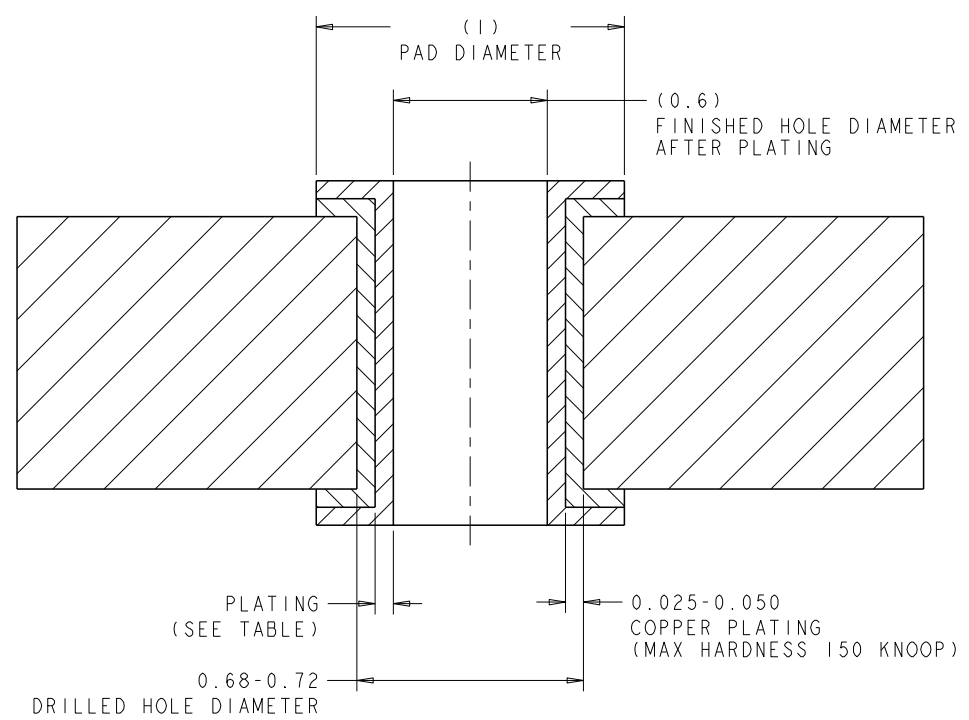
<small>THIS DRAWING IS A CONTROLLED DOCUMENT FOR TYCO ELECTRONICS CORPORATION                  IT IS SUBJECT TO THE TERMS AND CONDITIONS OF THE TYCO ELECTRONICS CORPORATION                  QUALITY MANAGEMENT SYSTEM AND IS NOT TO BE REPRODUCED OR TRANSMITTED IN ANY FORM OR BY ANY MEANS                  WITHOUT THE WRITTEN PERMISSION OF TYCO ELECTRONICS CORPORATION</small>		DWN: M. SHIRK 09APR2008 CHK: R. HENRY 09APR2008 APVD: R. HENRY 09APR2008	Tyco Electronics Tyco Electronics Harrisburg, PA 17105-3608
DIMENSIONS: mm 0 PLC ± 1 PLC ± 2 PLC ±0.25 3 PLC ± 4 PLC ± ANGLES ±1° FINISH	TOLERANCES UNLESS OTHERWISE SPECIFIED: 0 PLC ± 1 PLC ± 2 PLC ±0.25 3 PLC ± 4 PLC ± ANGLES ±1° FINISH	NAME: RECEPTACLE ASSEMBLY, 2X8, NON MAGNETICS, RJ POINT FIVE PRODUCT SPEC APPLICATION SPEC WEIGHT CUSTOMER DRAWING	SIZE: A CASE CODE: 00779 DRAWING NO: 2057133 SCALE: 4:1 SHEET: 3 OF 5 REV: A

LOC	QTY	REVISIONS			
P	LTN	DESCRIPTION	DATE	OWN	APPD
AG	00	SEE SHEET 1			

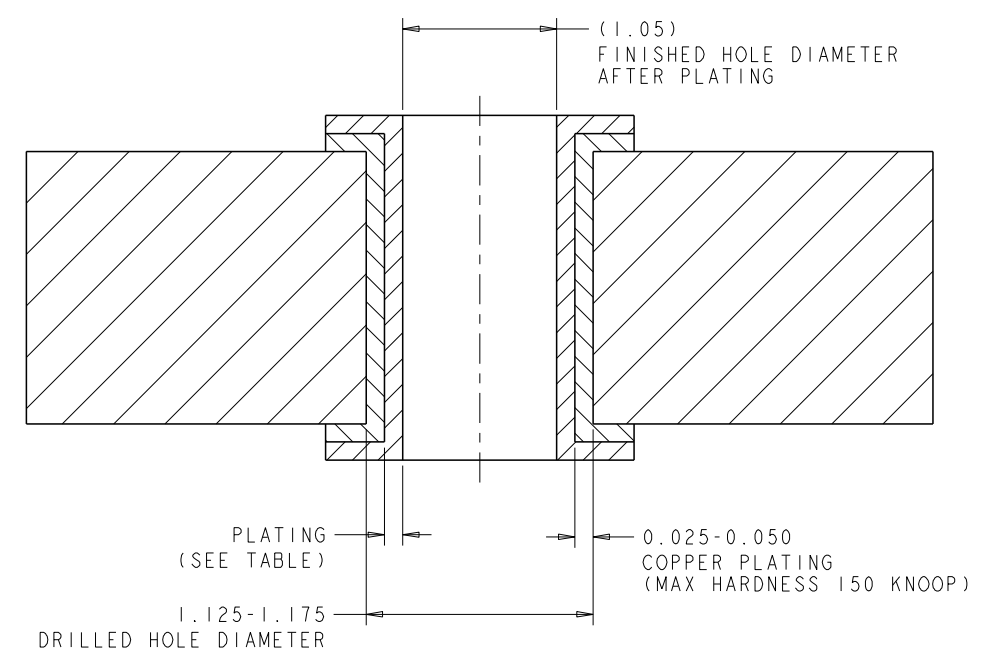


<small>THIS DRAWING IS A CONTROLLED DOCUMENT AND IS THE PROPERTY OF TYCO ELECTRONICS CORPORATION. IT IS SUBJECT TO THE TERMS AND CONDITIONS OF THE TYCO ELECTRONICS CORPORATION QUALITY ASSURANCE PROGRAM. UNLESS OTHERWISE SPECIFIED, ALL DIMENSIONS ARE IN MILLIMETERS.</small>		DWN: M. SHIRK 09APR2008 CHK: R. HENRY 09APR2008 APPD: R. HENRY 09APR2008	Tyco Electronics Harrisburg, PA 17105-3608
DIMENSIONS: mm 	TOLERANCES UNLESS OTHERWISE SPECIFIED: 0 PLC ± 1 PLC ± 2 PLC ±0.25 3 PLC ± 4 PLC ± ANGLES ±3° FINISH:	NAME: RECEPTACLE ASSEMBLY, 2X8, NON MAGNETICS, RJ POINT FIVE APPLICATION SPEC:	SIZE: A CASE CODE: 00779 DRAWING NO: 2057133 RESTRICTED TO:
MATERIAL:	FINISH:	WEIGHT:	SCALE: 4:1 SHEET 4 OF 5 REV A
CUSTOMER DRAWING			

LOC	QTY	REVISIONS			
P	LTN	DESCRIPTION	DATE	DWN	APVD
AG	00	SEE SHEET 1			



**RECOMMENDED HOLE DIMENSIONS FOR SIGNAL CONTACTS**



**RECOMMENDED HOLE DIMENSIONS FOR SHIELD PINS**

THICKNESS	PLATING
0.004-0.010	HOT AIR SOLDER LEVELING (HASL) TIN-LEAD (Sn Pb)
0.0005-0.001	IMMERSION TIN (Sn)
0.0002-0.0005	ORGANIC SOLDERABILITY PRESERVATIVE (OSP)
0.0001-0.0005 Au, 0.004-0.0076 Ni	IMMERSION GOLD (Au) OVER NICKEL (Ni) (ENIG)
0.010-0.025	TIN LEAD PLATING (Sn Pb)
0.0001-0.00015	IMMERSION SILVER (Ag)

<small>THIS DRAWING IS A CONTROLLED DOCUMENT FOR TYCO ELECTRONICS CORPORATION                  IT IS SUBJECT TO THE PROVISIONS OF THE TYCO ELECTRONICS CORPORATION                  PATENT, TRADE SECRET AND PROPRIETARY INFORMATION POLICY</small>		DWN: M. SHIRK 09APR2008 CHK: R. HENRY 09APR2008 APVD: R. HENRY 09APR2008	Tyco Electronics Tyco Electronics Harrisburg, PA 17105-3608
DIMENSIONS: mm	TOLERANCES UNLESS OTHERWISE SPECIFIED: 0 PLC ± 1 PLC ± 2 PLC ±0.25 3 PLC ± 4 PLC ± ANGLES ±3° FINISH	NAME: RECEPTACLE ASSEMBLY, 2X8, NON MAGNETICS, RJ POINT FIVE PRODUCT SPEC APPLICATION SPEC	SIZE: A CASE CODE: 00779 DRAWING NO: 2057133 RESTRICTED TO:
MATERIAL:		WEIGHT:	SCALE: 4:1 SHEET: 5 OF 5 REV: A
CUSTOMER DRAWING		Tyco Electronics	