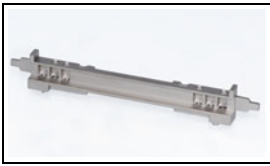


2057592-2 Product Details

[Share](#) [Print](#) [Email](#)



2057592-2

TE Internal Number: 2057592-2

Active

[View 3D PDF](#)

Pluggable Connectors, Cages & Accessories

Always EU RoHS/ELV Compliant (Statement of Compliance)

Product Highlights:

- CFP Product Line
- Accessory
- CFP Application
- Accessory Type = Guide Rail
- For Use With CFP Assembly

[View all Features](#)

Quick Links

- ▶ [Pricing & Availability](#)
- ▶ [Search for Tooling](#)
- ▶ [Product Feature Selector](#)
- ▶ [Contact Us About This Product](#)

[Add to My Part List](#) [Request Sample](#) [Find Similar Products](#) [Buy Product](#)

Documentation & Additional Information

Product Drawings:

- [GUIDE RAIL, 100 GIG PLUGGABLE](#) (PDF, English)

Catalog Pages/Data Sheets:

- [1-1773717-7_PLUGGABLE_IO_QRG_CN](#) (PDF, English)
- [1-1773717-8_PLUGGABLEIO_QRG_TCN](#) (PDF, English)
- [1-1773717-9_HIGH_SPEED_IO_QRG_JA](#) (PDF, English)
- [CFP_40G_100G_ETHERNET_CONNECTORS](#) (PDF, English)
- [4-1773455-2 - Quick Reference Guide Pluggable I/O So...](#) (PDF, English)

Product Specifications:

- [CFP 100 Gigabit Pluggable Host Connector and Transce...](#) (PDF, English)

Application Specifications:

- [CFP Host Board Assembly](#) (PDF, English)

Instruction Sheets:

- [CFP Host Board Assembly](#) (PDF, English)

CAD Files: (CAD Format & Compression Information)

- [2D Drawing](#) (DXF, Version A)
- [3D Model](#) (IGES, Version A)
- [3D Model](#) (STEP, Version A)

[List all Documents](#)

Related Products:

- [Tooling](#)

Product Features (Please use the Product Drawing for all design activity)

Product Type Features:

- Product Line = CFP
- Product Type = Accessory
- Accessory Type = Guide Rail

Electrical Characteristics:

- Data Signal Rate (Gb/s) = Up to 100

Dimensions:

- PCB Thickness, Recommended (mm [in]) = 2.00 [0.079]

Industry Standards:

- [RoHS/ELV Compliance](#) = RoHS compliant, ELV compliant
- [Lead Free Solder Processes](#) = Not relevant for lead free process
- [RoHS/ELV Compliance History](#) = Always was RoHS compliant

Conditions for Usage:

- [For Use With](#) = CFP Assembly

Operation/Application:

- [Application](#) = CFP

Packaging Features:

- [Packaging Method](#) = Tray

Other:

- [Brand](#) = TE Connectivity

Corporate Information

[About TE](#)
[Investors](#)
[News Room](#)
[Supplier Portal](#)
[Careers](#)

Quick Links

[Distributor Inventory](#)
[Product Cross Reference](#)
[Documents & Drawings](#)
[Product Compliance Support Center](#)
[Site Map](#)

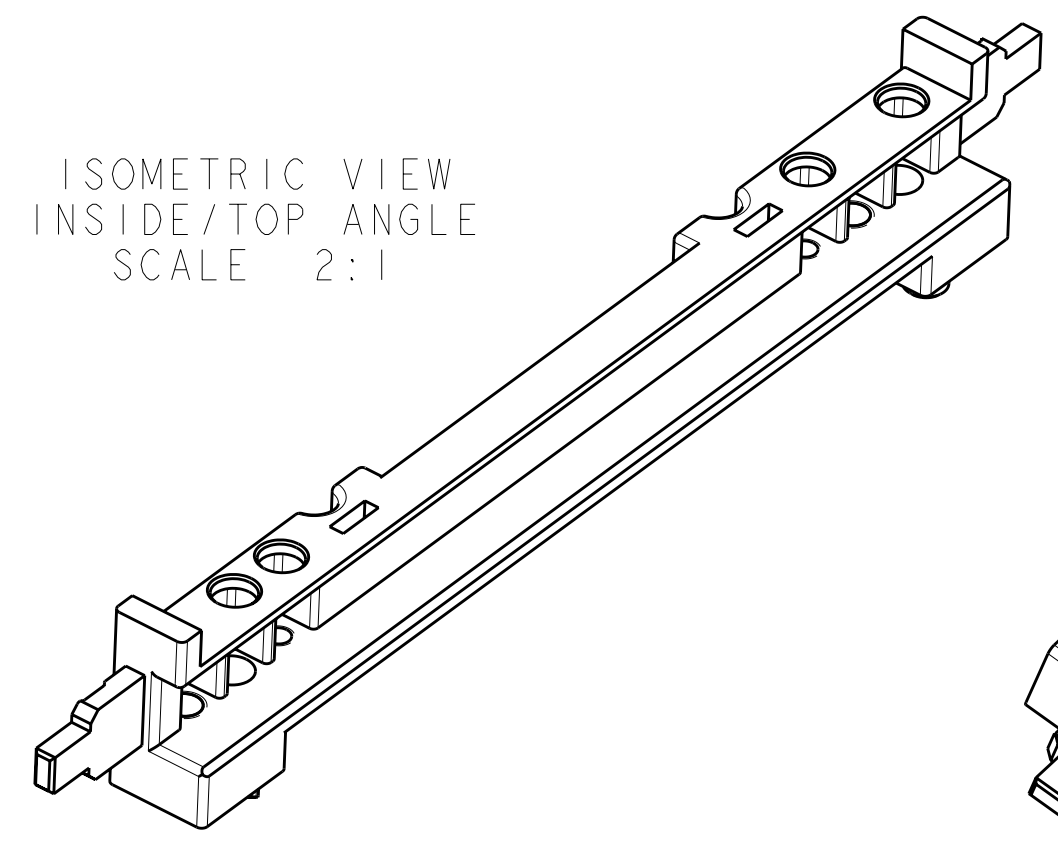
Customer Support

[Email or Chat With Us](#)
[Find a Phone Number](#)
[Knowledge Base](#)
[Manage Your Account](#)

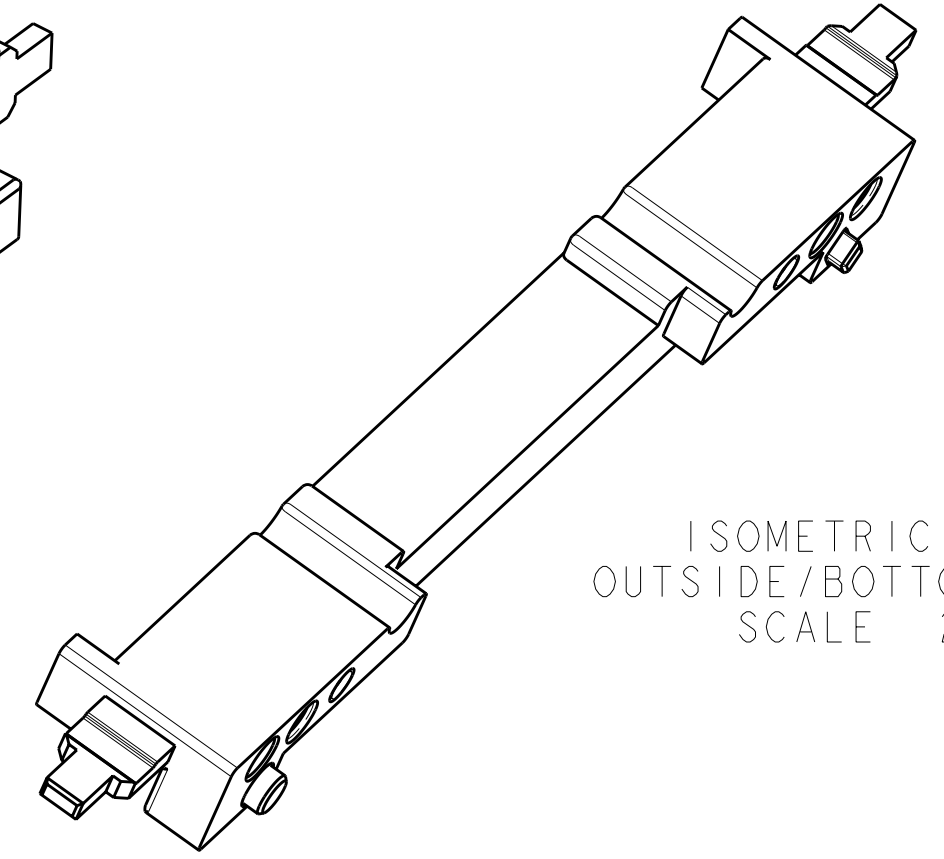
THIS DRAWING IS UNPUBLISHED. RELEASED FOR PUBLICATION 2008
 © COPYRIGHT 2008 BY - ALL RIGHTS RESERVED.

| LOC | DIST | REVISIONS | | | |
|-----|------|-------------|----------------------------|-----------|---------|
| P | LTR | DESCRIPTION | DATE | DWN | APVD |
| GP | 00 | A | RELEASED PER ECO-12-006362 | 15MAY2012 | CJV MRS |
| | | | | | |
| | | | | | |

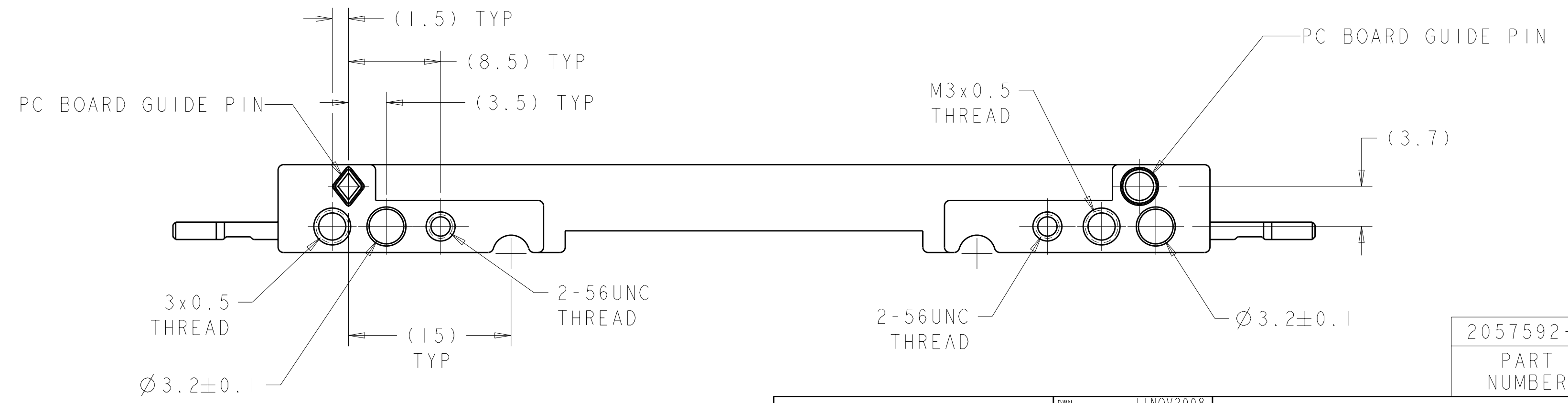
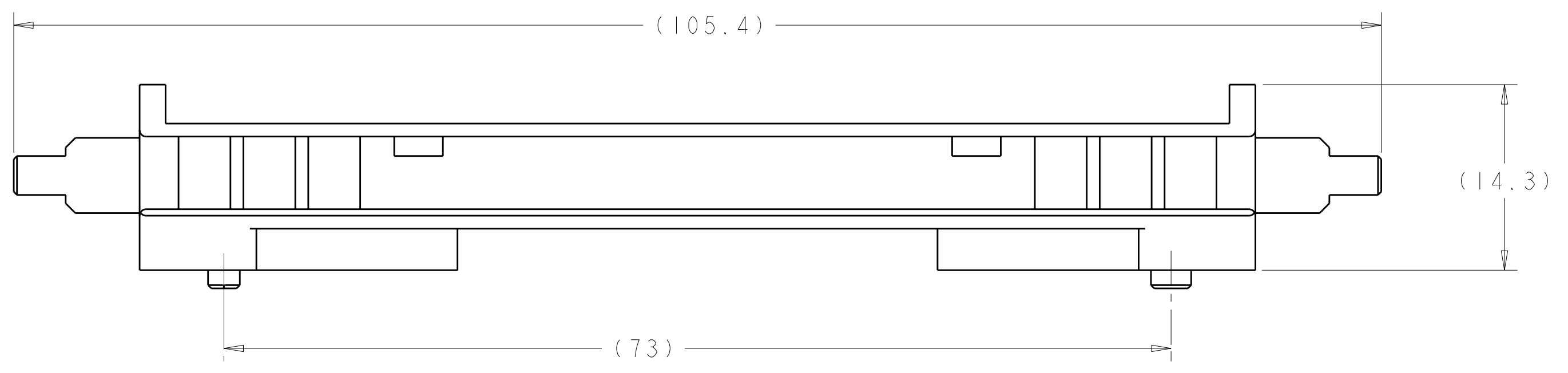
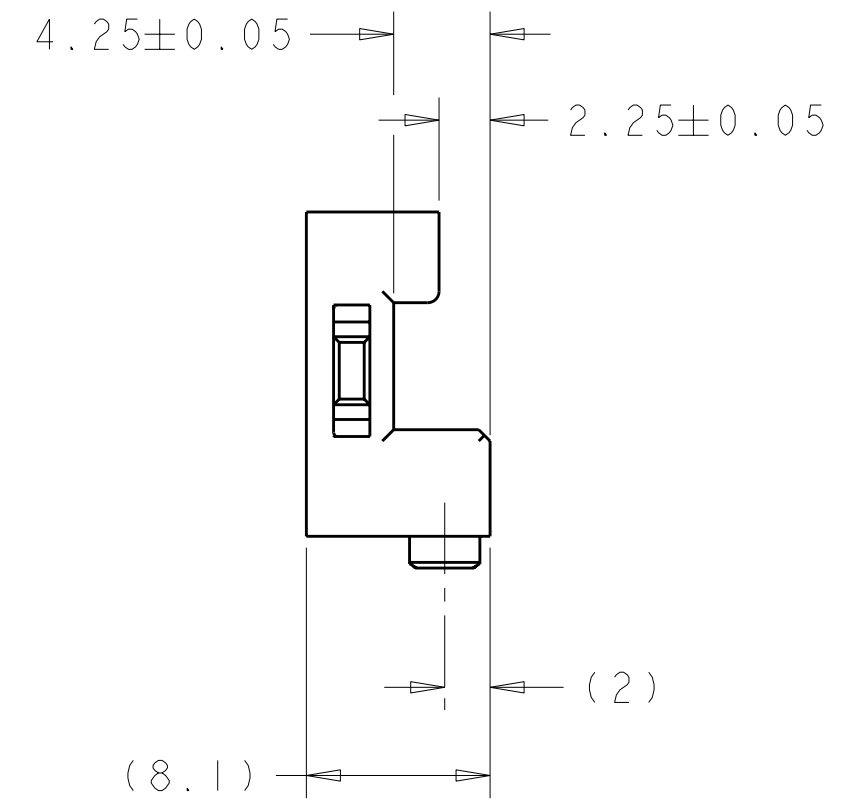
ISOMETRIC VIEW
 INSIDE/TOP ANGLE
 SCALE 2:1



ISOMETRIC VIEW
 OUTSIDE/BOTTOM ANGLE
 SCALE 2:1



- ① MATERIAL: ZINC ALLOY PER ASTM B 86, AG40A.
- ② FINISH: 1.27µm MIN NICKEL PLATE PER QQ-N-290
 OVER 5.08µm MIN COPPER PLATE PER AMS 2418.



2057592-2
 PART NUMBER

| | | | | |
|--|----------|-----------------------------|-------------------------------------|-----------------------|
| THIS DRAWING IS A CONTROLLED DOCUMENT. DIMENSIONING AND TOLERANCING PER ASME Y14.5M-2009 | | DWN: C. VALENTINE 11NOV2008 | TE Connectivity | |
| DIMENSIONS: mm | | CHK: E. BRIGHT 11NOV2008 | | |
| TOLERANCES UNLESS OTHERWISE SPECIFIED: | | APVD: E. BRIGHT 11NOV2008 | NAME: GUIDE RAIL, 100 GIG PLUGGABLE | |
| 0 PLC ± | 1 PLC ± | PRODUCT SPEC: 108-2399 | SIZE: A2 | |
| 2 PLC ± | 3 PLC ± | APPLICATION SPEC: 114-13263 | CAGE CODE: 200779 | DRAWING NO: C-2057592 |
| 4 PLC ± | ANGLES ± | WEIGHT: - | RESTRICTED TO: - | |
| FINISH: ② | | CUSTOMER DRAWING | | |
| SCALE: 3:1 | | | SHEET: 1 | REV: A |