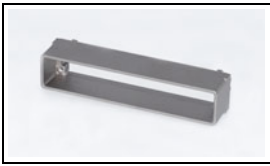


2057626-1 Product Details

[Share](#) [Print](#) [Email](#)



2057626-1

TE Internal Number: 2057626-1
[Preliminary](#)

[View 3D PDF](#)

Pluggable Connectors, Cages & Accessories

Always EU RoHS/ELV Compliant (Statement of Compliance)

Product Highlights:

- CFP Product Line
- Accessory
- CFP Application
- Accessory Type = External Bracket
- For Use With CFP Assembly

[View all Features](#)

Quick Links

- ▶ [Pricing & Availability](#)
- ▶ [Search for Tooling](#)
- ▶ [Product Feature Selector](#)
- ▶ [Contact Us About This Product](#)

[Add to My Part List](#) [Request Sample](#) [Find Similar Products](#) [Buy Product](#)

Documentation & Additional Information

Product Drawings:

- [EXTERNAL BRACKET ASSEMBLY MODULE, CFP PLUGGABLE](#) (PDF, English)

Catalog Pages/Data Sheets:

- [CFP_40G_100G_ETHERNET_CONNECTORS](#) (PDF, English)

Product Specifications:

- [CFP 100 Gigabit Pluggable Host Connector and Transce...](#) (PDF, English)

Application Specifications:

- [CFP Host Board Assembly](#) (PDF, English)

Instruction Sheets:

- [CFP Host Board Assembly](#) (PDF, English)

CAD Files: (CAD Format & Compression Information)

- [2D Drawing](#) (DXF, Version 7)
- [3D Model](#) (IGES, Version 7)
- [3D Model](#) (STEP, Version 7)

[List all Documents](#)

Related Products:

- [Tooling](#)

Product Features (Please use the Product Drawing for all design activity)

Product Type Features:

- Product Line = CFP
- Product Type = Accessory
- Accessory Type = External Bracket

Electrical Characteristics:

- Data Signal Rate (Gb/s) = Up to 100

Dimensions:

- PCB Thickness, Recommended (mm [in]) = 2.00 [0.079]

Industry Standards:

- [RoHS/ELV Compliance](#) = RoHS compliant, ELV compliant
- [Lead Free Solder Processes](#) = Not relevant for lead free process
- [RoHS/ELV Compliance History](#) = Always was RoHS compliant

Conditions for Usage:

- [For Use With](#) = CFP Assembly

Operation/Application:

- [Application](#) = CFP

Packaging Features:

- [Packaging Method](#) = Tray

Other:

- [Brand](#) = TE Connectivity

Corporate Information

- [About TE](#)
- [Investors](#)
- [News Room](#)
- [Supplier Portal](#)
- [Careers](#)
- [Terms & Conditions](#)
- [Privacy Policy](#)

Quick Links

- [Distributor Inventory](#)
- [Product Cross Reference](#)
- [Documents & Drawings](#)
- [Product Compliance Support Center](#)
- [Site Map](#)

Customer Support

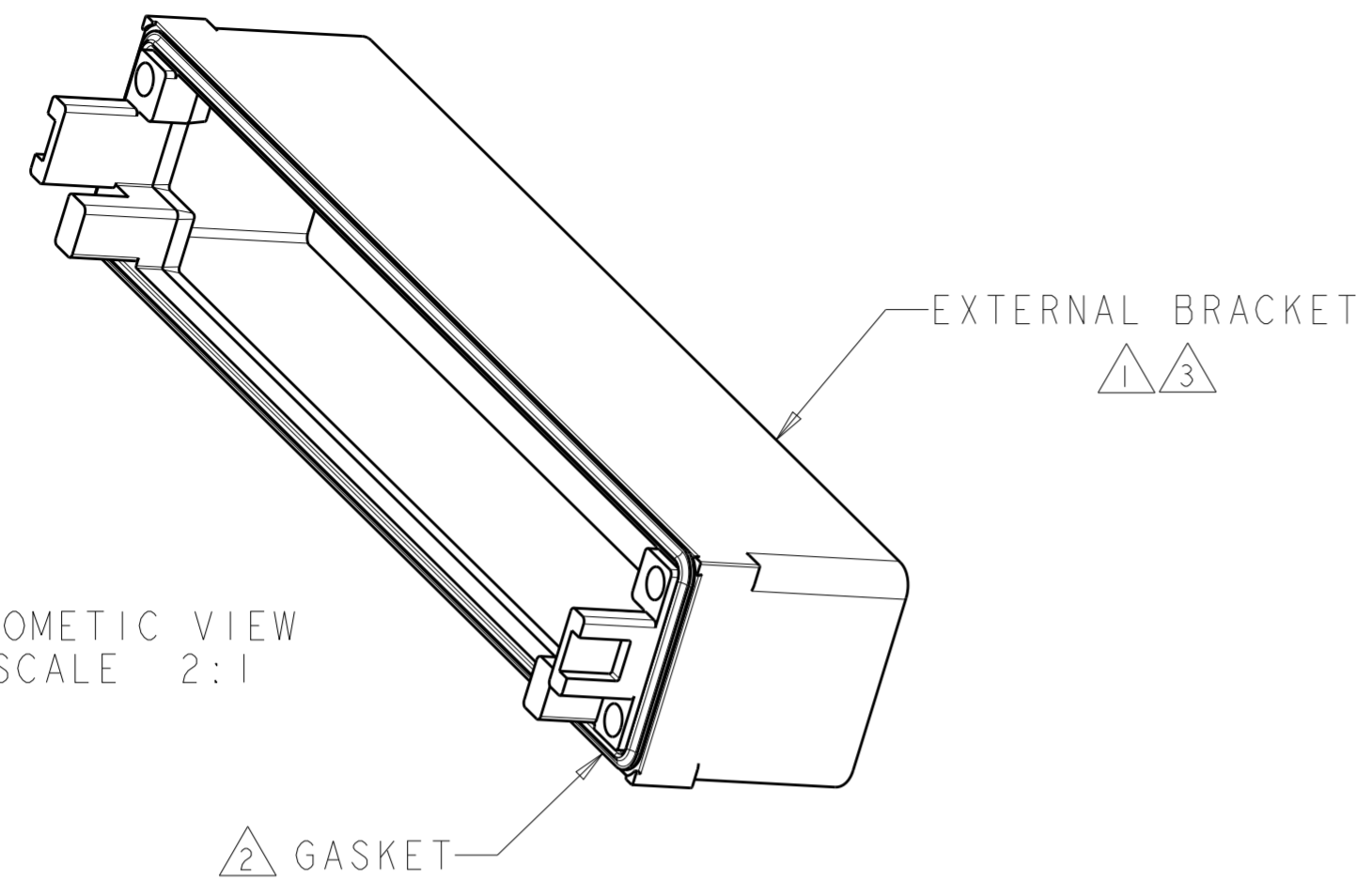
- [Email or Chat With Us](#)
- [Find a Phone Number](#)
- [Knowledge Base](#)
- [Manage Your Account](#)

Keep Me Informed

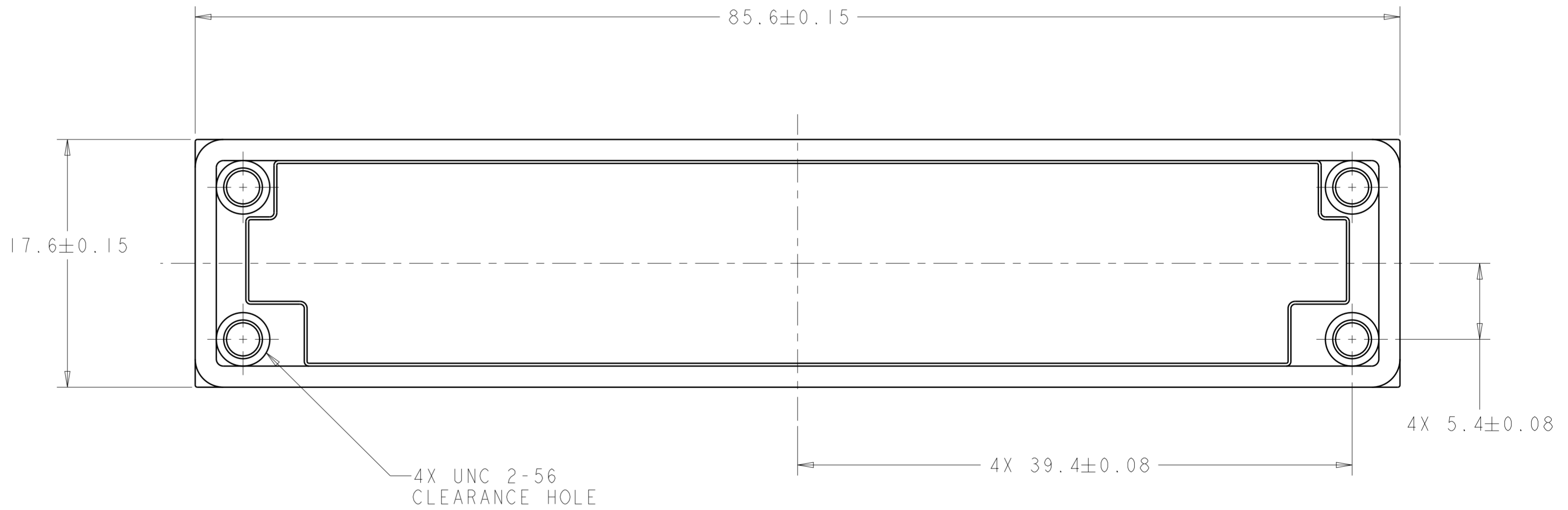
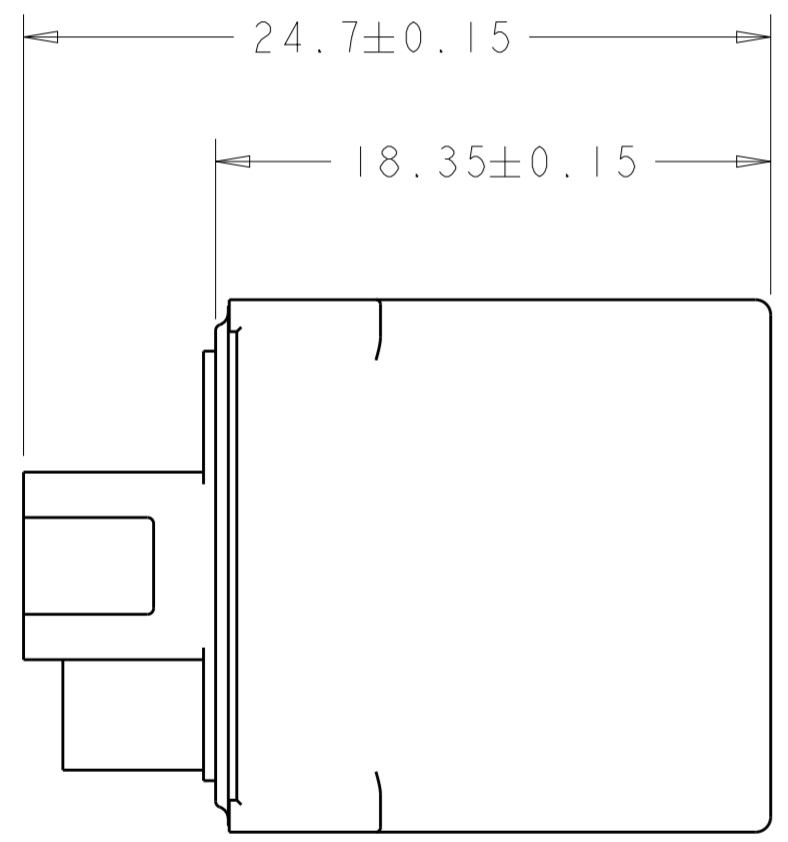
THIS DRAWING IS UNPUBLISHED. RELEASED FOR PUBLICATION 20
 © COPYRIGHT 20 BY - ALL RIGHTS RESERVED.

LOC	DIST	REVISIONS					
GP	00	P	LTR	DESCRIPTION	DATE	DWN	APVD
			10	UPDATED VIEWS	04MAR2013	CJV	MRS

D
C
B
A



- ① MATERIAL: ZINC ALLOY PER ASTM B 86. ALLOY AG40A.
- ② MATERIAL: CHOMERICS CHO-SEAL 1270, SILVER PLATED COPPER IN SILICONE.
- ③ FINISH: 1.27µm MIN NICKEL PLATE PER QQ-N-290 OVER 5.08µm MIN COPPER PLATE PER AMS 2418.



2057626-1
PART NUMBER

THIS DRAWING IS A CONTROLLED DOCUMENT. DIMENSIONING AND TOLERANCING PER ASME Y14.5M-2009		DWN C. VALENTINE 06NOV2008	TE Connectivity	
DIMENSIONS: mm		CHK E. BRIGHT 06NOV2008		
TOLERANCES UNLESS OTHERWISE SPECIFIED:		APVD E. BRIGHT 06NOV2008	NAME EXTERNAL BRACKET ASSEMBLY MODULE, CFP PLUGGABLE	
0 PLC ±	1 PLC ±	PRODUCT SPEC	SIZE	CAGE CODE
2 PLC ±	3 PLC ±	APPLICATION SPEC	A200779	C-2057626
4 PLC ±	ANGLES ±	WEIGHT	SCALE	SHEET
FINISH		CUSTOMER DRAWING	4:1	1 OF 1
				REV 10