

2057930-1 Product Details



2057930-1

TE Internal Number: 2057930-1



Pluggable Connectors, Cages & Accessories

 Always EU RoHS/ELV Compliant (Statement of Compliance)

Product Highlights:

- CFP Product Line
- Accessory
- CFP Application
- Accessory Type = Backer Plate
- For Use With CFP Assembly

Documentation & Additional Information

Product Drawings:

- [BACKER PLATE ASSEMBLY, 100 GIG PLUGGABLE](#) (PDF, English)

Catalog Pages/Data Sheets:

- [CFP_40G_100G_ETHERNET_CONNECTORS](#) (PDF, English)

Product Specifications:

- [CFP 100 Gigabit Pluggable Host Connector and Transce...](#) (PDF, English)

Application Specifications:

- [CFP Host Board Assembly](#) (PDF, English)

Instruction Sheets:

- [CFP Host Board Assembly](#) (PDF, English)

CAD Files: (CAD Format & Compression Information)

- [2D Drawing](#) (DXF, Version B)
- [3D Model](#) (IGES, Version B)
- [3D Model](#) (STEP, Version B)

Related Products:

- [Tooling](#)

Product Features (Please use the Product Drawing for all design activity)

Product Type Features:

- Product Line = CFP
- Product Type = Accessory
- Accessory Type = Backer Plate

Electrical Characteristics:

- Data Signal Rate (Gb/s) = Up to 100

Dimensions:

- PCB Thickness, Recommended (mm [in]) = 2.00 [0.079]

Industry Standards:

- [RoHS/ELV Compliance](#) = RoHS compliant, ELV compliant
- [Lead Free Solder Processes](#) = Not relevant for lead free process
- RoHS/ELV Compliance History = Always was RoHS compliant

Conditions for Usage:

- [For Use With](#) = CFP Assembly

Operation/Application:

- [Application](#) = CFP

Packaging Features:

- Packaging Method = Tray

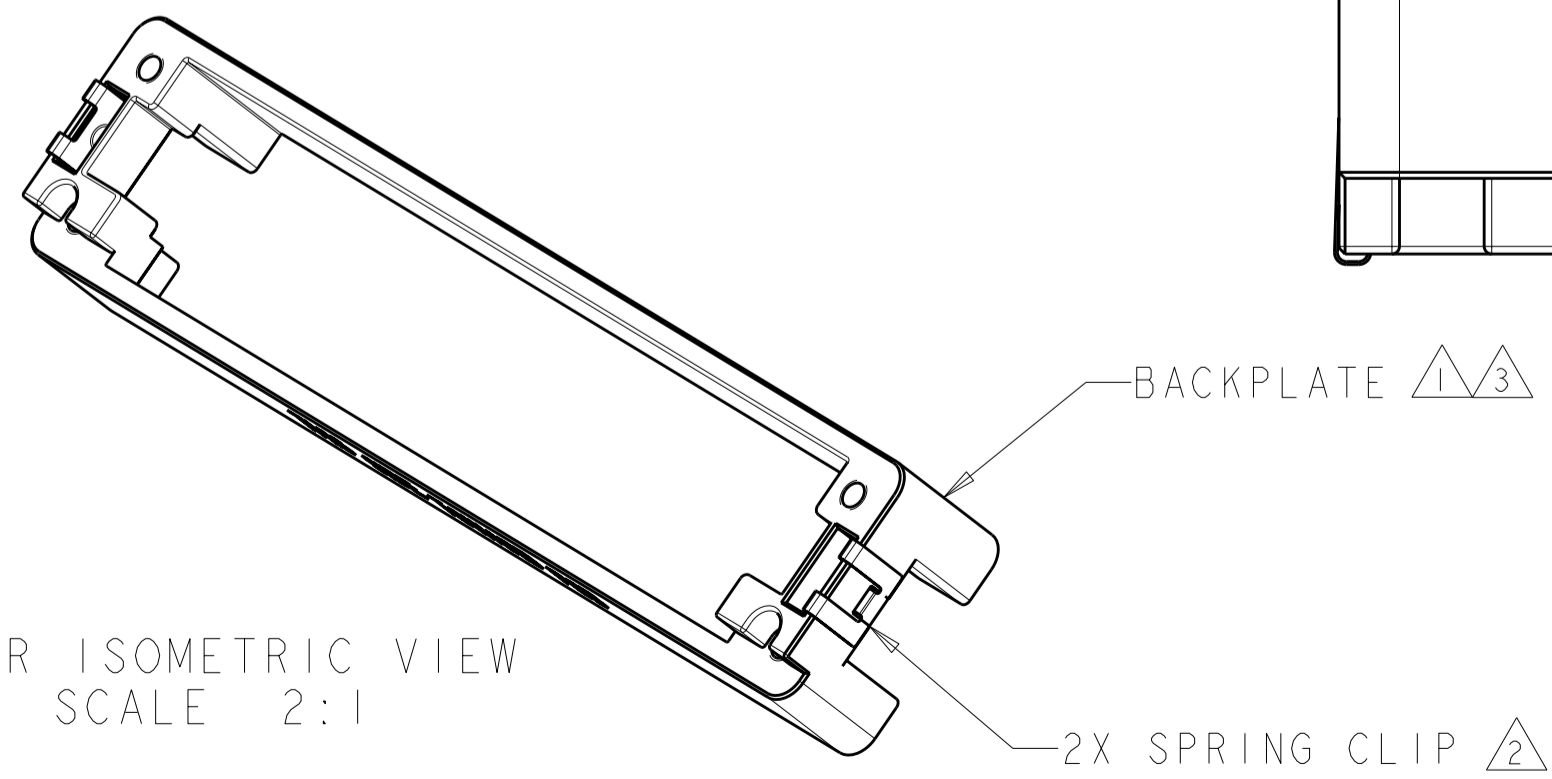
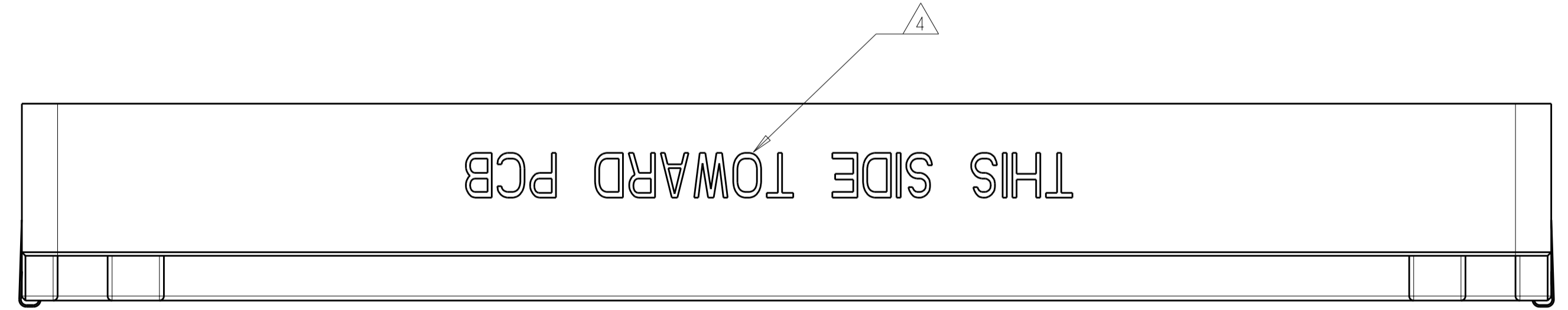
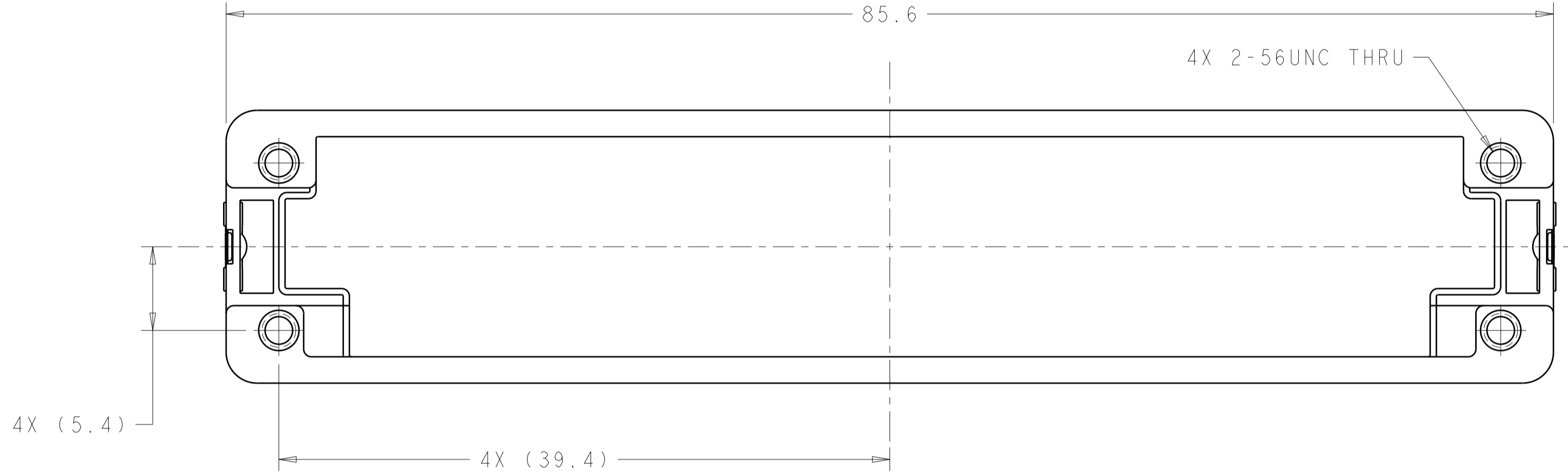
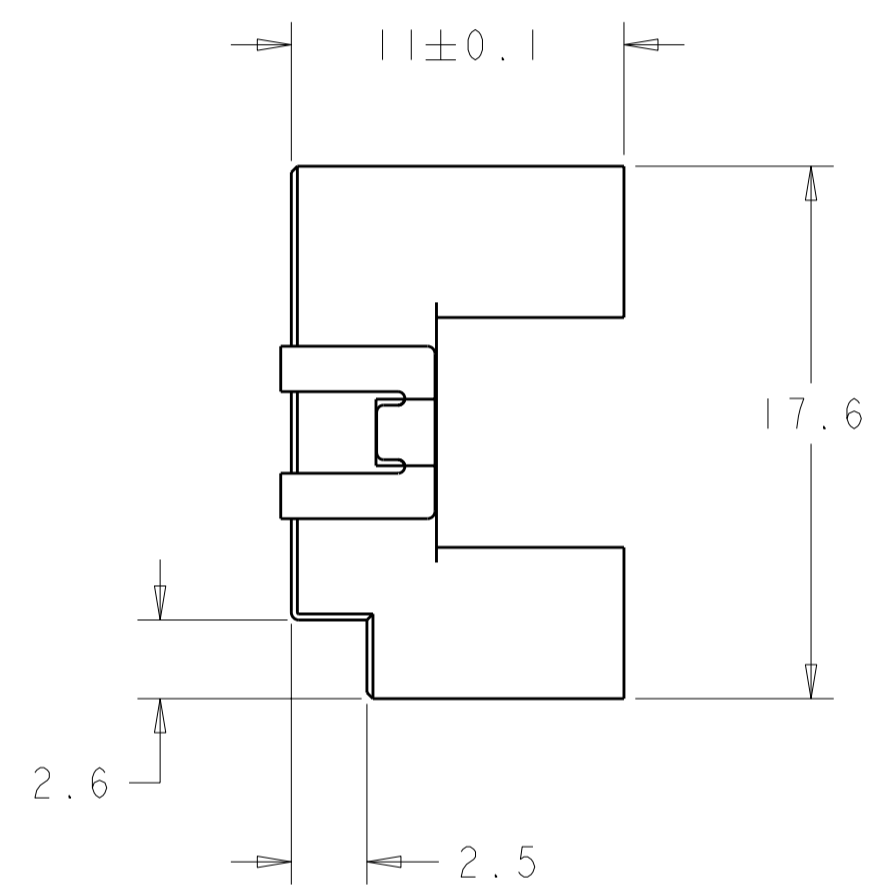
Other:

- Brand = TE Connectivity

THIS DRAWING IS UNPUBLISHED. RELEASED FOR PUBLICATION 20
 © COPYRIGHT 20 ALL RIGHTS RESERVED.

LOC	DIST	REVISIONS					
GP	00	P	LTR	DESCRIPTION	DATE	DWN	APVD
		A		RELEASED PER ECO-12-006362	14MAY2012	CJV	MRS

- ① ZINC ALLOY PER ASTM B 86. ALLOY AG40A.
- ② STAINLESS STEEL PER ASTM A 666. TYPE 11 OR TYPE 12.
- ③ 1.27µm MIN NICKEL PLATE PER QQ-N-290
OVER 5.08µm MIN COPPER PLATE PER AMS 2418.
- ④ TEXT INDICATES THIS SURFACE OF THE PART IS TO FACE TOWARD PCB.



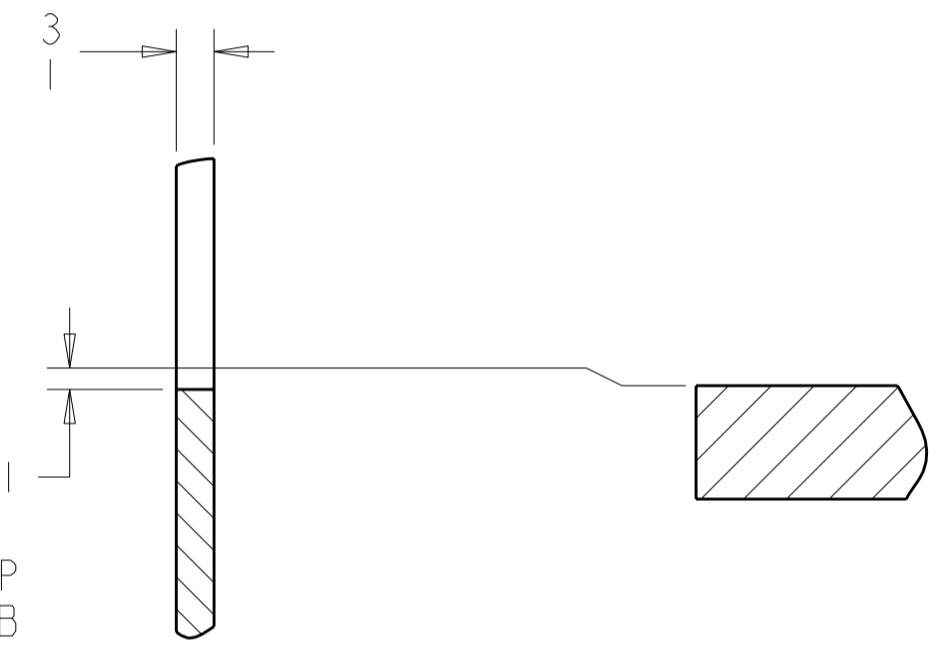
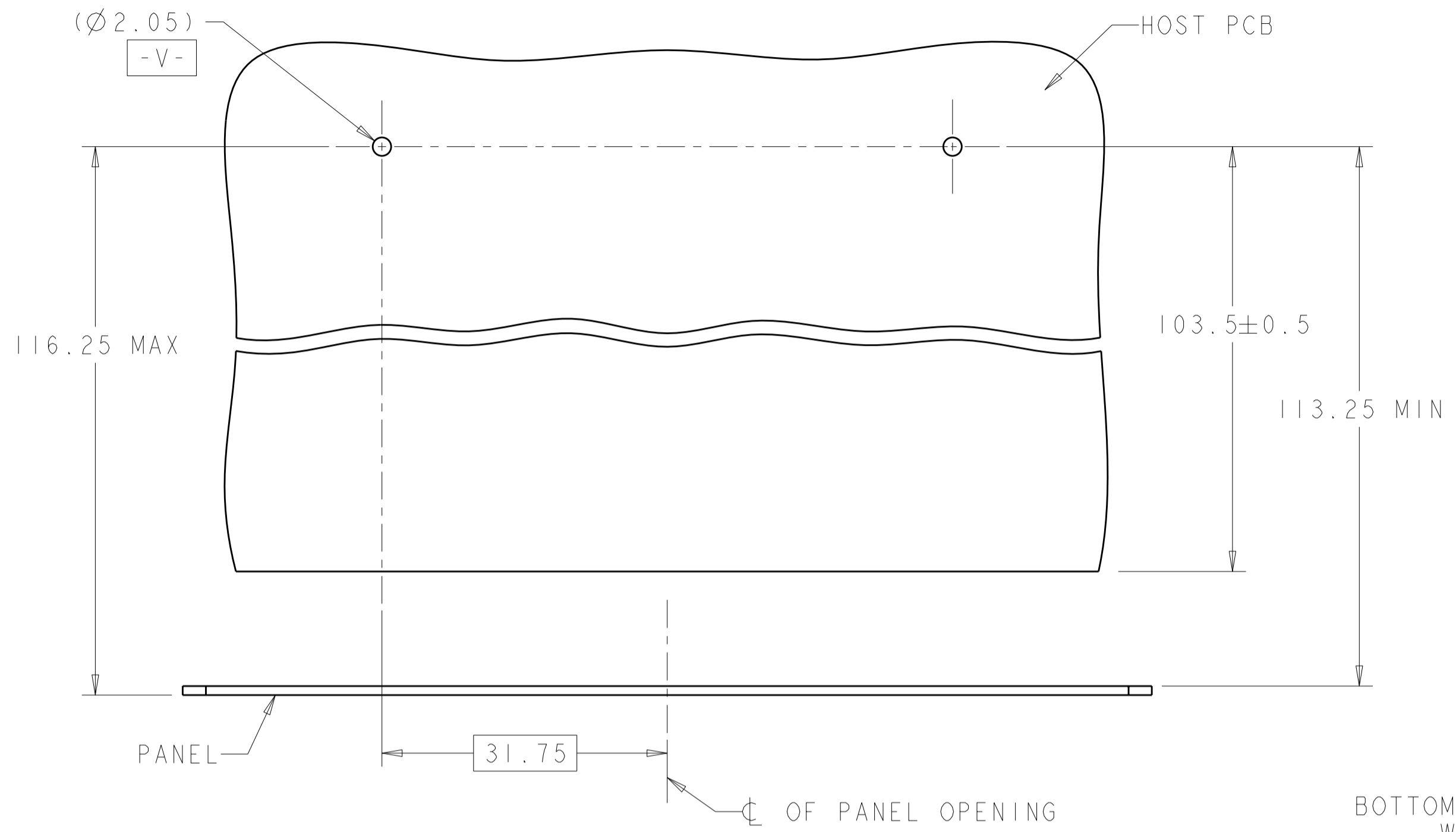
REAR ISOMETRIC VIEW
SCALE 2:1

2057930-1
PART NUMBER

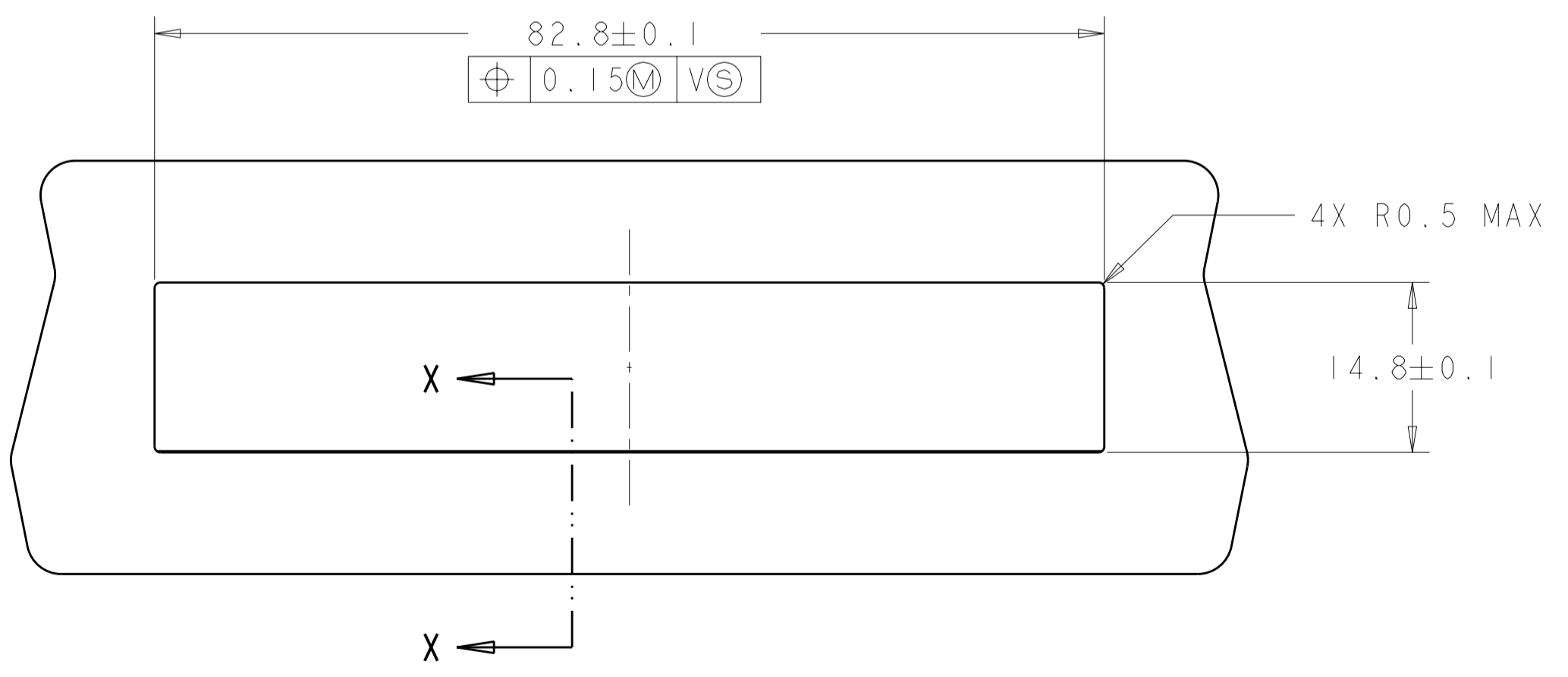
THIS DRAWING IS A CONTROLLED DOCUMENT. DIMENSIONING AND TOLERANCING PER ASME Y14.5M-2009		DWN C. VALENTINE 19DEC2008	TE Connectivity	
DIMENSIONS: mm		CHK E. BRIGHT 19DEC2008		
TOLERANCES UNLESS OTHERWISE SPECIFIED:		APVD E. BRIGHT 19DEC2008	NAME BACKER PLATE ASSEMBLY, 100 GIG PLUGGABLE	
0 PLC ±0.13		PRODUCT SPEC 108-2399	SIZE A200779	CAGE CODE C-2057930
1 PLC ±0.1		APPLICATION SPEC 114-13263	SCALE 4:1	SHEET 1 OF 2
2 PLC ±0.05		WEIGHT -	RESTRICTED TO -	REV A
3 PLC ±		CUSTOMER DRAWING		
4 PLC ±				
ANGLES ±				
FINISH ±				

THIS DRAWING IS UNPUBLISHED. RELEASED FOR PUBLICATION 20
 © COPYRIGHT 20 ALL RIGHTS RESERVED.

LOC	DIST	REVISIONS					
GP	00	P	LTR	DESCRIPTION	DATE	DWN	APVD
		-		SEE SHEET 1			



SECTION X-X
SCALE 5:1



RECOMMENDED PANEL OPENING AND PANEL LOCATION WITH RESPECT TO HOST PCB
SCALE 2:1

THIS DRAWING IS A CONTROLLED DOCUMENT. DIMENSIONING AND TOLERANCING PER ASME Y14.5M-2009		DWN C. VALENTINE 19DEC2008	TE Connectivity	
DIMENSIONS: mm		CHK E. BRIGHT 19DEC2008		
TOLERANCES UNLESS OTHERWISE SPECIFIED:		APVD E. BRIGHT 19DEC2008	NAME BACKER PLATE ASSEMBLY, 100 GIG PLUGGABLE	
0 PLC ±0.13	1 PLC ±0.1	PRODUCT SPEC 108-2399	SIZE A200779	CAGE CODE C-2057930
2 PLC ±0.05	3 PLC ±	APPLICATION SPEC 114-13263	DRAWING NO 114-13263	RESTRICTED TO -
4 PLC ±	ANGLES ±	WEIGHT -	SCALE 4:1	SHEET 2 OF 2
MATERIAL -	FINISH -	CUSTOMER DRAWING	REV A	