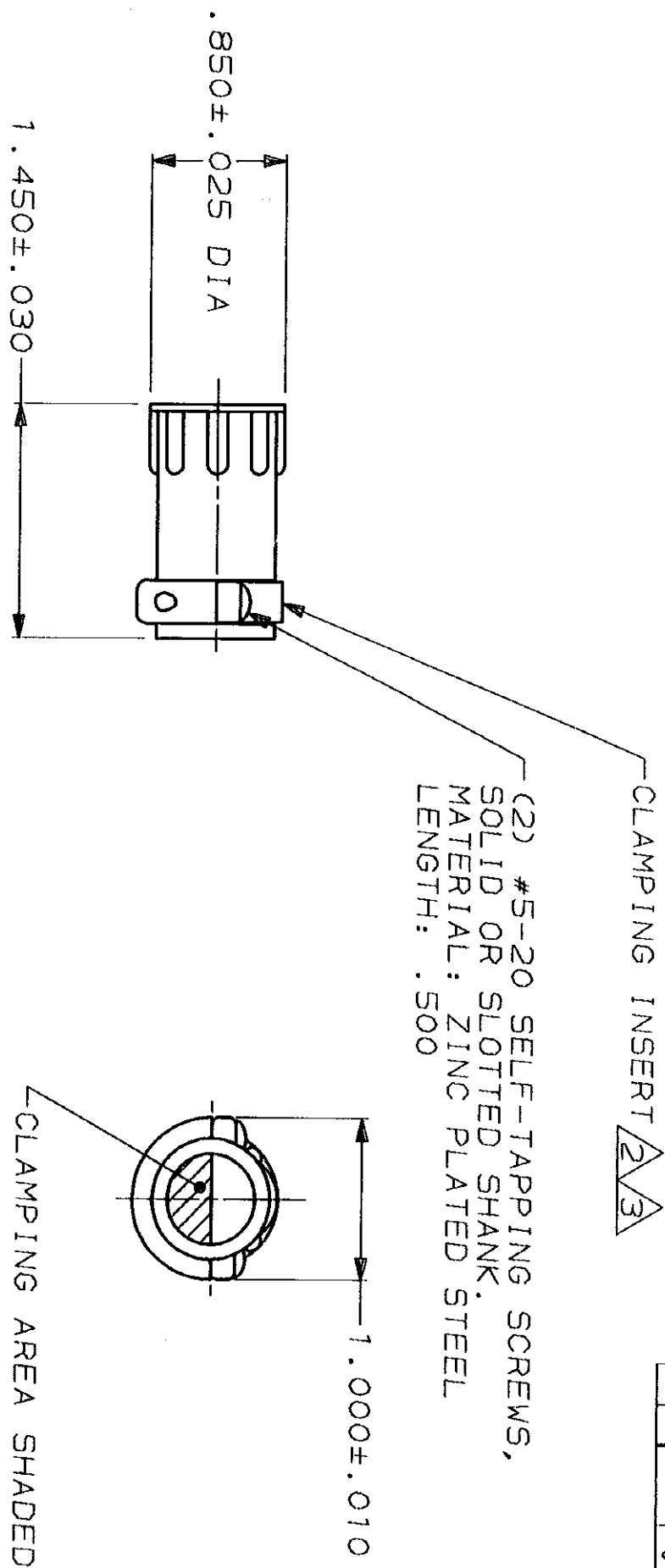


MOD	LOC	DIST	REVISONS	
4	BD	35	P	F
			ZONE	LTR
			G	REDRAWN
			H	REV PER ECN BD6815
			J	OBSOLETED -3 EC 0020-271-93
				DATE
				4/23/91
				APPD
				10/16/92
				07/30/93
				AF



1. PARTS PACKAGED UNASSEMBLED.
2. CABLE CLAMPING AREA ADJUSTABLE FROM .010 TO .161 SQ IN BY REVERSING CLAMPING INSERTS. (2 INSERTS SUPPLIED, -1 AND -2 ONLY)
3. CABLE CLAMPING AREA ADJUSTABLE FROM .010 TO .161 SQ IN BY CHANGING CLAMPING INSERTS. (4 INSERTS SUPPLIED, -3 ONLY)
4. .453 MAXIMUM CABLE OUTSIDE DIAMETER.
5. BULK PACKAGED KITS TO BE ORDERED IN MULTIPLES OF 200 ONLY.

DO NOT SCALE PRINT. UNLESS SPECIFIED DIMENSIONS IN INCHES TOLERANCES ON:		DR	4/23/91	NAME	AMP
1 P/C DEC #	-	CHK	7-23-92		AMP Incorporated
2 P/C DEC #	-	APPD	7-23-92		Harrisburg, PA 17105-3608
3 P/C DEC #	-	APPD	7-23-92		
ANGLES	-	APPD	7-23-92		
MATERIAL		PRODUCT SPEC	108-10024	SIZE	B
THERMOPLASTIC,		APPLICATION SPEC		CAGE CODE	00779
BLACK		FINISH		DRAWING NO	206358
		WEIGHT		SCALE	1:1
				SHEET	1 OF 1

OBSOLETE	5	BULK	206358-3
	5	BULK	206358-2
	5	INDIVIDUAL	206358-1
		PACKAGING	PART NUMBER