

2106056-2 Product Details

[Share](#) [Print](#) [Email](#)



2106056-2

TE Internal Number: 2106056-2

Active

[View 3D PDF](#)

SlimSeal Solid State Lighting (SSL) Connectors

Always EU RoHS/ELV Compliant (Statement of Compliance)

Product Highlights:

- Connector
- Wire-to-Board
- 3.50 mm Centerline
- Applies To Printed Circuit Board
- Contact Current Rating, Max. = 5 A

[View all Features](#)

Quick Links

- ▶ [Pricing & Availability](#)
- ▶ [Search for Tooling](#)
- ▶ [Product Feature Selector](#)
- ▶ [Contact Us About This Product](#)

[Add to My Part List](#) [Request Sample](#) [Find Similar Products](#) [Buy Product](#)

Documentation & Additional Information

Product Drawings:

- [ASSEMBLY RIGHT ANGLE SMT HEADER SLIMSEAL SSL CONNECTOR \(PDF, English\)](#)

Catalog Pages/Data Sheets:

- [SLIMSEAL_SSL_CONNECOTS \(PDF, English\)](#)

Product Specifications:

- [SlimSeal SSL Connector \(PDF, English\)](#)

Application Specifications:

- [SlimSeal Solid State Lighting \(SSL\) Connectors and C... \(PDF, English\)](#)

Instruction Sheets:

- None Available

CAD Files: [\(CAD Format & Compression Information\)](#)

- [2D Drawing \(DXF, Version A\)](#)
- [3D Model \(IGES, Version A\)](#)
- [3D Model \(STEP, Version A\)](#)

[List all Documents](#)

Related Products:

- [Tooling](#)

Product Features (Please use the Product Drawing for all design activity)

Product Type Features:

- Product Type = Connector
- Connector Type = Header
- Sealed = Yes
- Termination Method to PC Board = Surface Mount
- PCB Mount Retention = With
- PCB Mount Alignment = Without
- SMT Compatible = Yes
- Mount Angle = Right Angle
- Keyed = Yes
- PCB Mount Retention Type = Solder Pads
- Make First / Break Last = No

Mechanical Attachment:

- Mating Retention Type = Latching

Electrical Characteristics:

- Contact Current Rating, Max. (A) = 5
- Operating Voltage (VAC) = 250
- Operating Voltage (VDC) = 250

Termination Features:

- Tail Orientation = In-line

Dimensions:

- Length (X-Axis) (mm [in]) = 20.61 [0.8114]
- Width (Z-Axis) (mm [in]) = 20.54 [0.809]
- Post-Mating Assembly Measurement (mm [in]) = 11.58 [0.456]
- Mating Post Length (mm [in]) = 6.48 [0.255]

Body Features:

- Mating Retention = With
- Header Mating Direction = Horizontal

Housing Features:

- Centerline (mm [in]) = 3.50 [0.138]
- Connector Style = Receptacle
- Mating Alignment = With
- Housing Material = High Temperature Nylon
- Housing Color = Black
- UL Flammability Rating = UL 94V-0

Configuration Features:

- Number of Positions = 2
- Number of Rows = 1

Industry Standards:

- IP Dust Sealing Level = 6
- IP Water Sealing Level = 7
- [RoHS/ELV Compliance](#) = RoHS compliant, ELV compliant
- [Lead Free Solder Processes](#) = Reflow solder capable to 245°C, Reflow solder capable to 260°C
- RoHS/ELV Compliance History = Always was RoHS compliant

Identification Marking:

- Circuit Identification Feature = With

Environmental:

- Operating Temperature (°C [°F]) = -40 - +105 [-40 - +221]

Conditions for Usage:

- Applies To = Printed Circuit Board
- SMT Soldering Temperature (°C [°F]) = 225 [437]
- Lighting Interconnect Level = Level 1
- Glow Wire Rating = Standard Part - Not Glow Wire
- UV Exposure Rated = No

Contact Features:

- Contact Plating, Termination Area, Material = Matte Tin over Nickel
- Contact Plating, Termination Area, Thickness (μm [μin]) = 7.62 [300]
- Contact Type = Tab
- Contact Plating, Mating Area, Material = Tin
- Contact Plating, Mating Area, Thickness (μm [μin]) = 2.54 [100]
- Stamped and Formed = Yes

Operation/Application:

- Application Use = Wire-to-Board

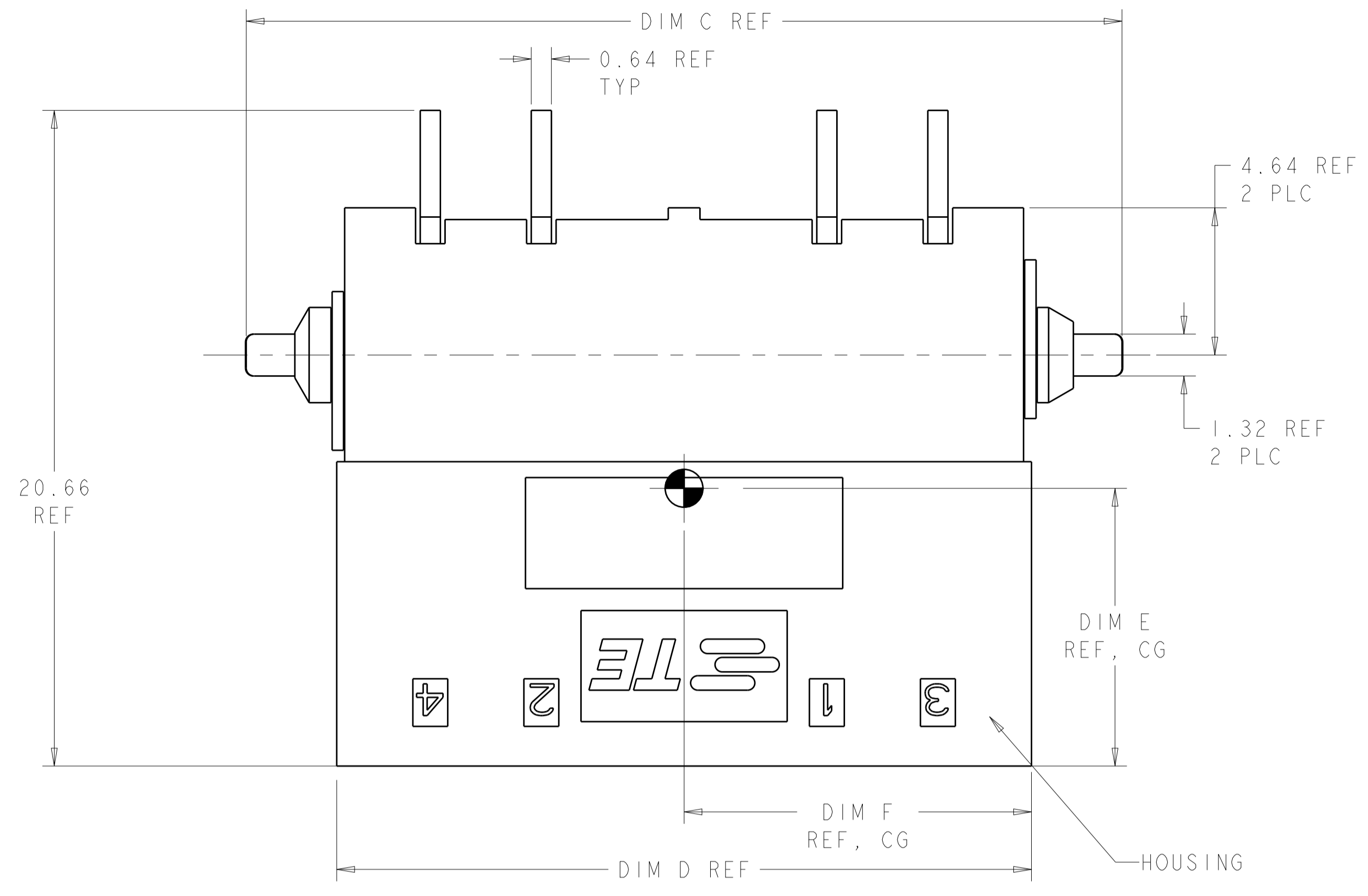
Packaging Features:

- Packaging Method = SMT Pocket Tape

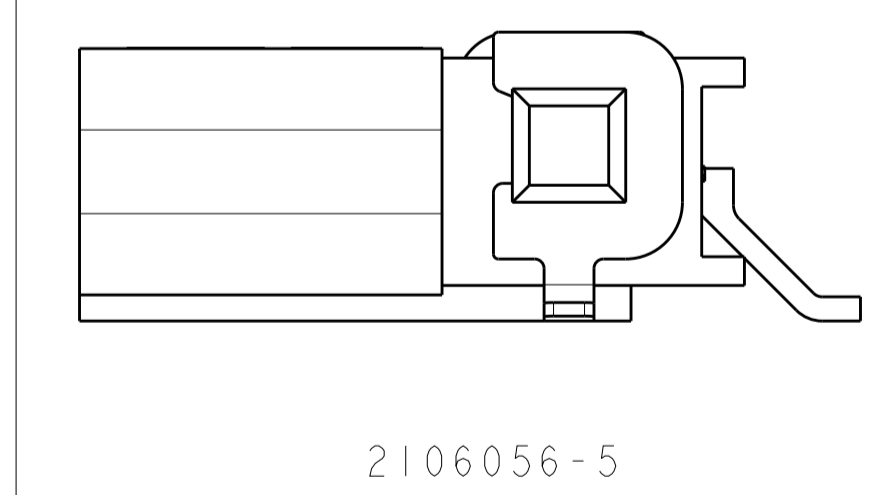
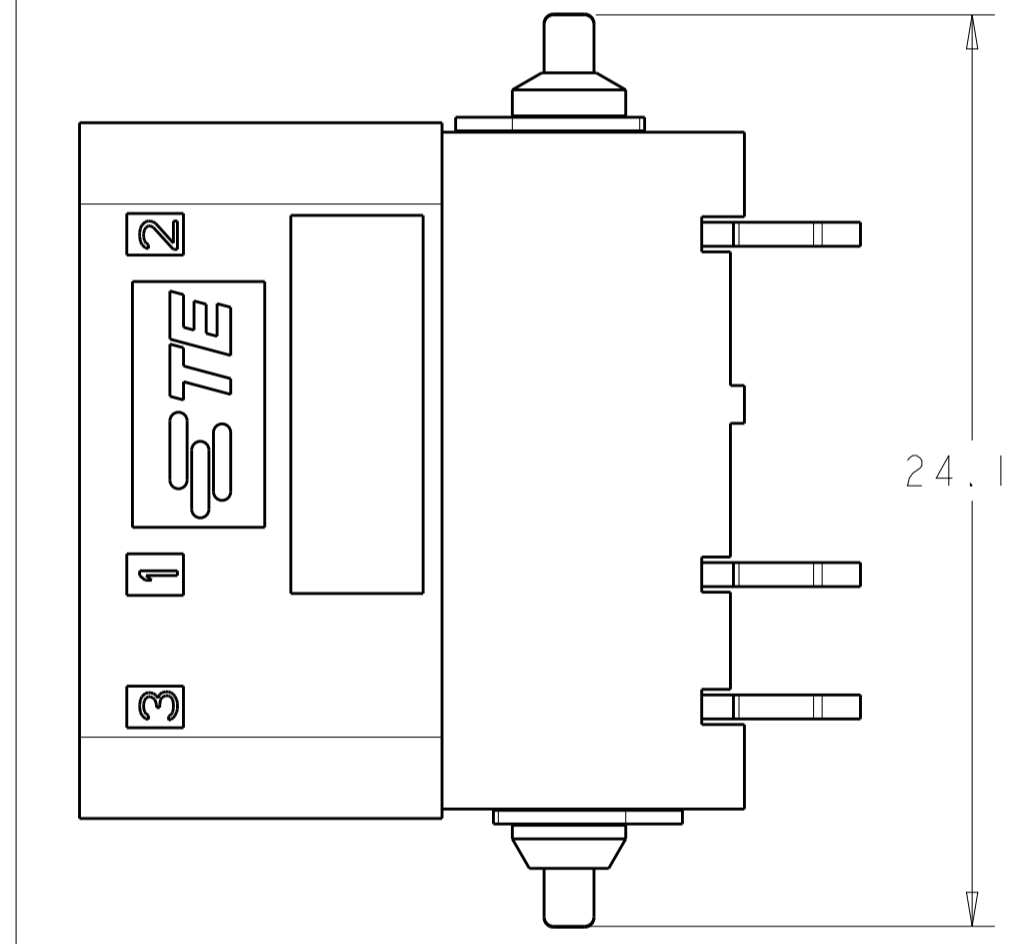
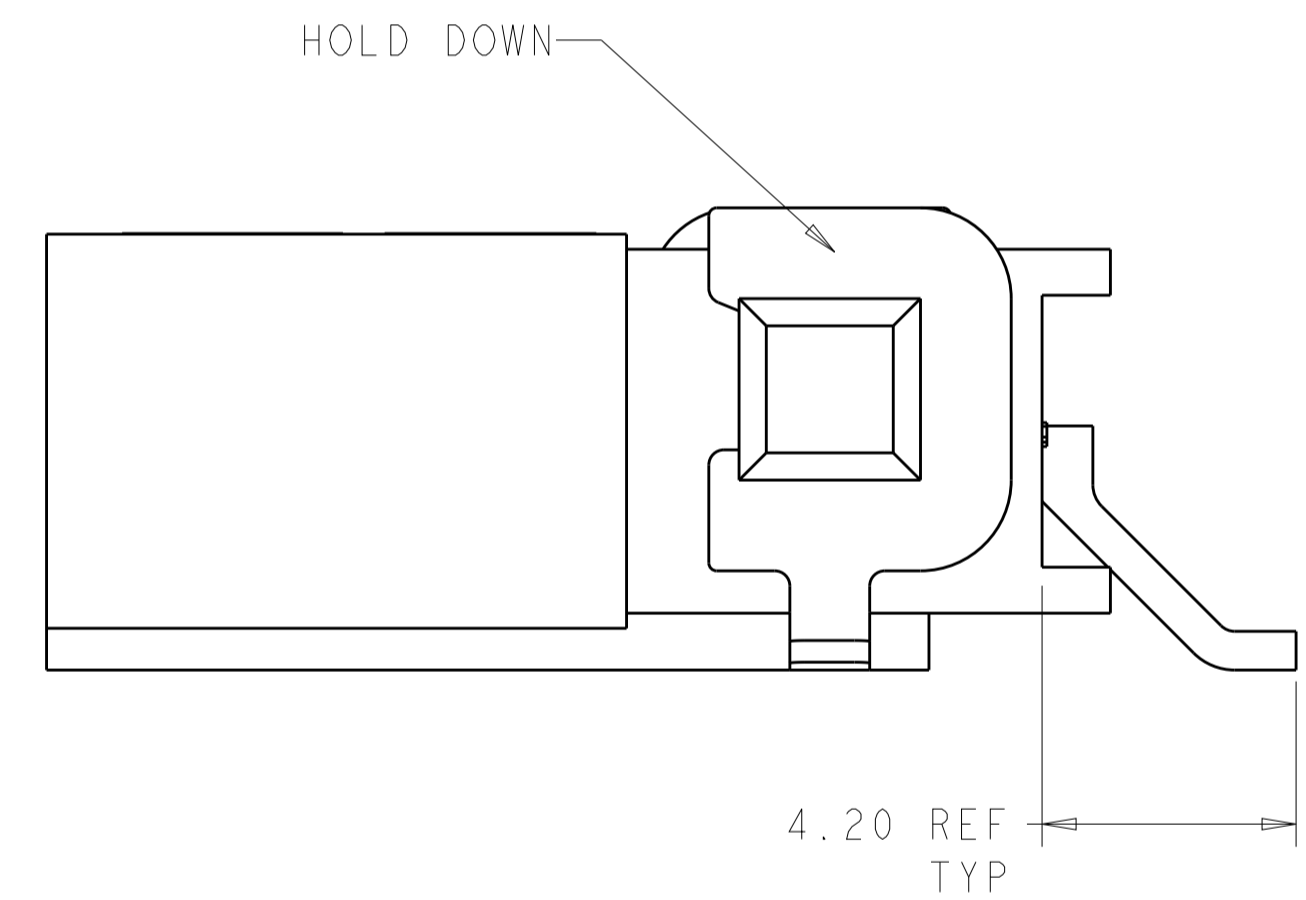
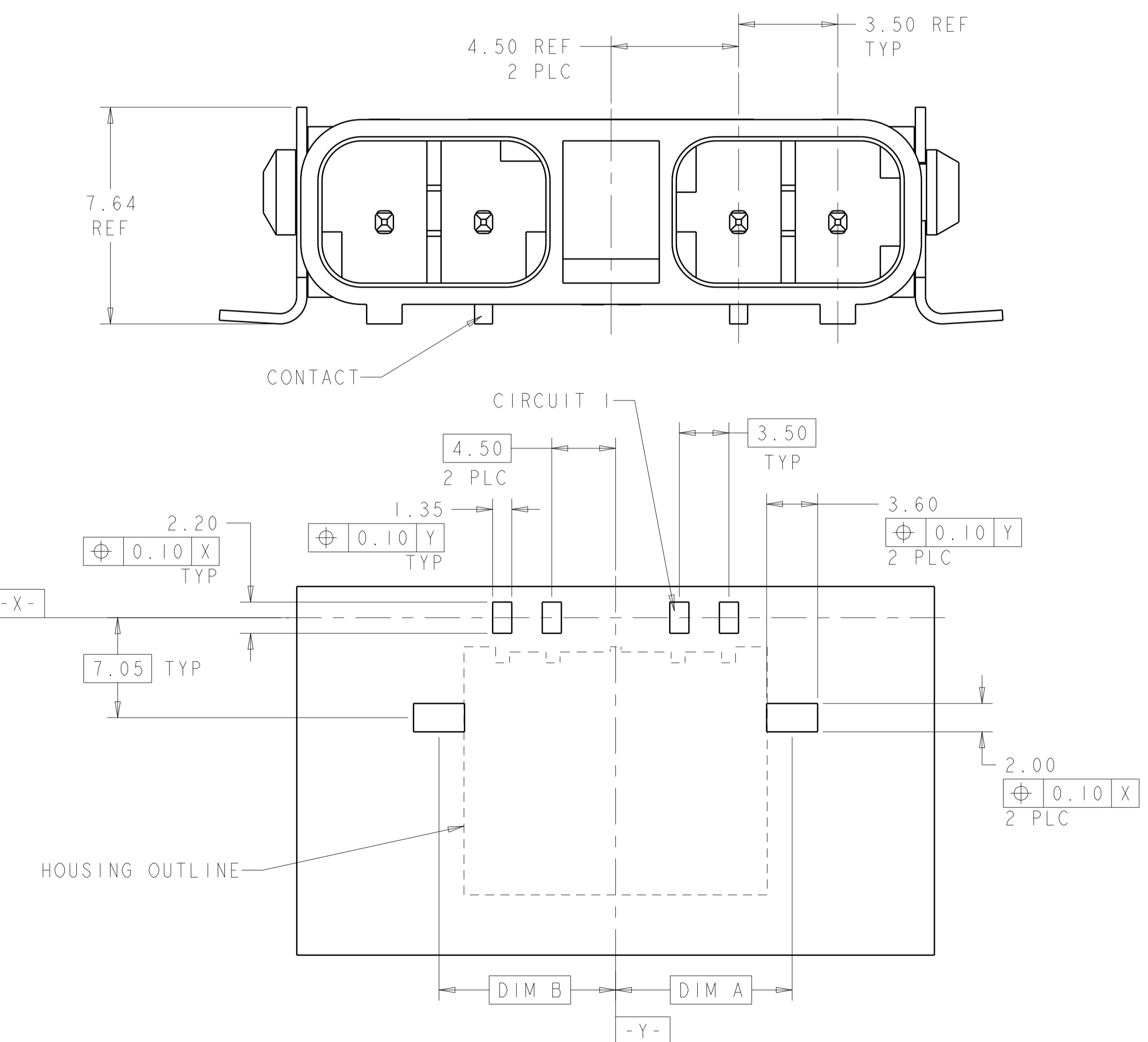
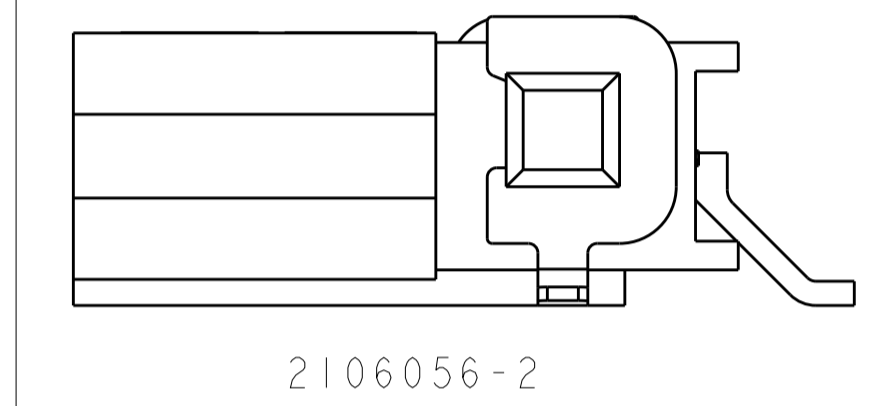
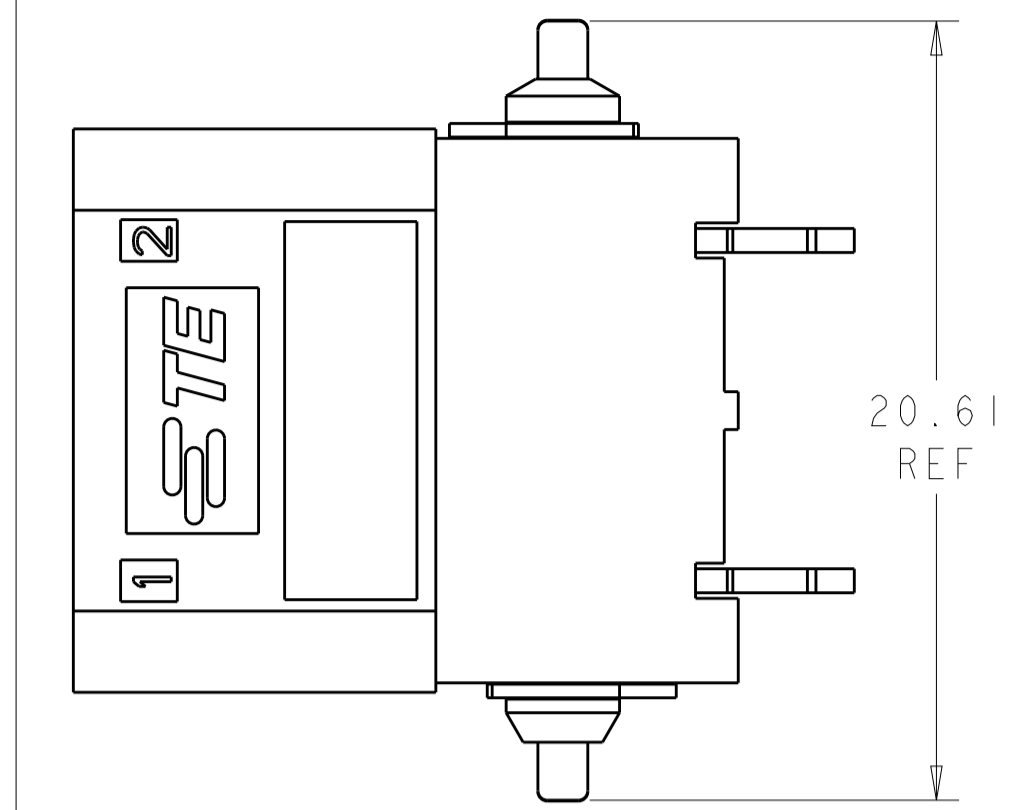
Other:

- Brand = TE Connectivity

LOC	DIST	REVISIONS					
CM	00	P	LTN	DESCRIPTION	DATE	DWN	APVD
		A2		REVISED PER ECO-11-004820	11MAR2011	RK	HMR
		B		REVISED PER ECR-13-008007	17SEP2013	RS	DD



- MATERIAL: HOUSING: LCP, COLOR: BLACK.
 CONTACTS: BRASS.
 FINISH: 2.54µm MIN MATTE TIN OVER NICKEL (ENTIRE POST).
 HOLDDOWN: COPPER ALLOY.
 FINISH: 2.54µm MIN MATTE TIN OVER NICKEL.
- THIS PRODUCT HAS NOT COMPLETED VALIDATION TESTING.
 - RECOMMENDED PC BOARD THICKNESS OF 1.57.
 - TAPE AND REEL PACKAGING PER EIA-481 SPEC.
 - MUST COMPLY WITH DIRECTIVE 2002/95/EC (ROHS).



10.94	10.81	21.90	27.61	12.46	12.46	4	2106056-8
9.19	10.68	18.40	24.11	8.96	12.46	3	2106056-5
7.44	10.51	14.90	20.61	8.96	8.96	2	2106056-2
DIM F	DIM E	DIM D	DIM C	DIM B	DIM A	POSN	PART NUMBER

RECOMMENDED PC BOARD PAD LAYOUT, COMPONENT SIDE
 DIMENSIONS APPLY TO ALL POSITIONS UNLESS OTHERWISE NOTED

THIS DRAWING IS A CONTROLLED DOCUMENT. DWN: HM VAN SCIO, 26FEB2009
 CHK: A. BUCHER, 26FEB2009
 APVD: A. BUCHER, 26FEB2009

STE TE Connectivity
 ASSEMBLY
 RIGHT ANGLE SMT HEADER
 SLIMSEAL SSL CONNECTOR

DIMENSIONS: mm
 TOLERANCES UNLESS OTHERWISE SPECIFIED:
 0 PLC ±0.2
 1 PLC ±0.15
 2 PLC ±0.15
 3 PLC ±0.15
 4 PLC ±0.15
 ANGLES ±2°

MATERIAL: LCP
 FINISH: MATTE TIN OVER NICKEL

PRODUCT SPEC: 108-2391
 APPLICATION SPEC: 114-13261
 WEIGHT: -
 CUSTOMER DRAWING

SIZE: A1
 CAGE CODE: 100779
 DRAWING NO: 2106056
 RESTRICTED TO: B

SCALE: 4:1
 SHEET: 1 OF 1
 REV: B