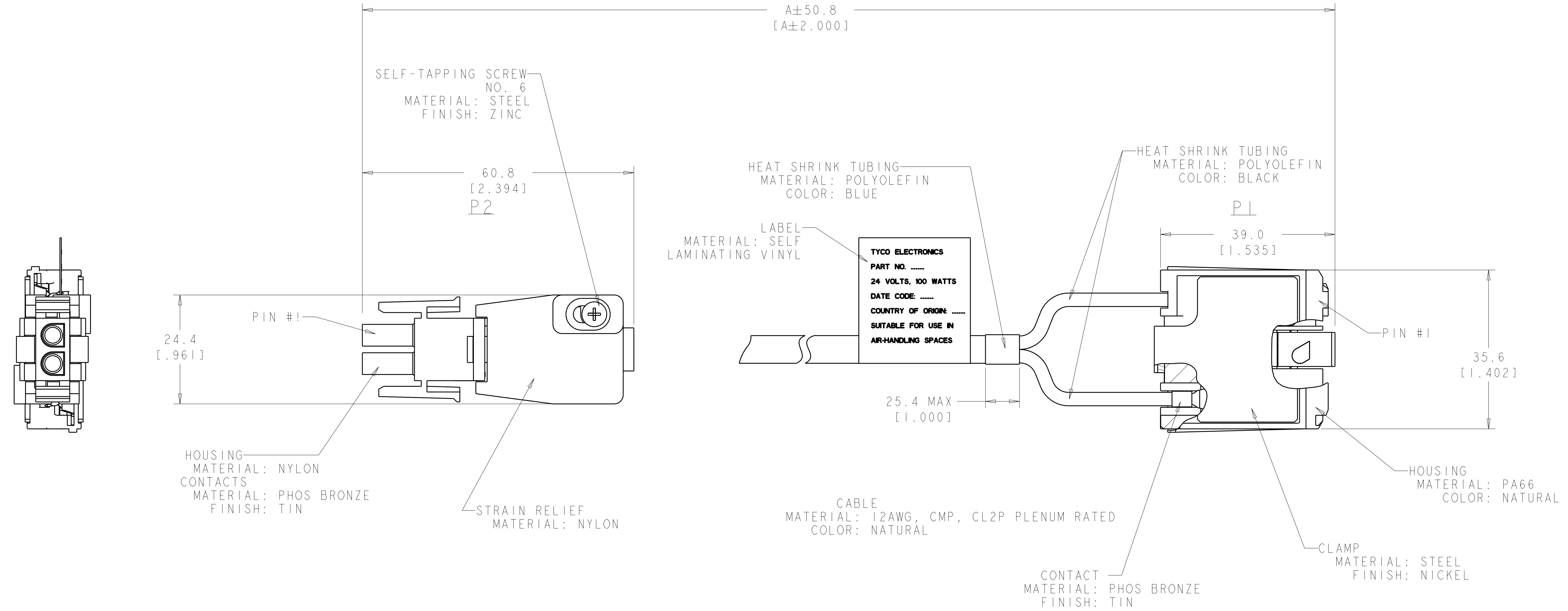


LOC		DIST		REVISIONS			
CM	00	P	LTR	DESCRIPTION	DATE	DWN	APVD
		A		SEE ECO-11-019559	26SEP2011	GIP	MTL

WIRING CHART	
P1	P2
PIN #1	PIN #1
PIN #2	PIN #2

1. DIRECTIVE 2002/95/EC (ROHS) COMPLIANT.
 2. ITEMS 2106725-5 & -6 ARE TO REMAIN IN PRELIMINARY STATUS.



9144.0	2103725-6
7620.0	2106725-5
6096.0	2106725-4
4572.0	2106725-3
3048.0	2106725-2
1524.0	2106725-1
DIM A (CABLE LENGTH)	PART NO

THIS DRAWING IS A CONTROLLED DOCUMENT.

DM: MM VAN SCOOC 19OCT2009
 CHK: S. HEADER 19OCT2009
 APVD: M. LUKSIC 26SEP2011

NAME: ASSEMBLY, CABLE POWER-IN

PRODUCT SPEC: 108-2114
 APPLICATION SPEC: 114-13275

SIZE: A1
 CAGE CODE: 100779
 DRAWING NO: C-2106725

RESTRICTED TO: -

CUSTOMER DRAWING SCALE: 4:1 SHEET: 1 OF 1 REV: A