

## 211122-1 Product Details

[Share](#) [Print](#) [Email](#)



**211122-1**

TE Internal Number: 211122-1

Active

[View 3D PDF](#)

### Modular Couplers

Always EU RoHS/ELV Compliant (Statement of Compliance)

#### Product Highlights:

- Region = Asia, North America, Latin America
- 8 Positions
- Body Style = In-Line
- Not Keyed
- Coupler Type = MJ/MJ

[View all Features](#)

### Quick Links

- ▶ [Pricing & Availability](#)
- ▶ [Search for Tooling](#)
- ▶ [Product Feature Selector](#)
- ▶ [Contact Us About This Product](#)

[Add to My Part List](#) [Request Sample](#) [Find Similar Products](#) [Buy Product](#)

### Documentation & Additional Information

#### Product Drawings:

- [COUPLER, SL, INLINE, CAT5E, SHIELDED \(PDF, English\)](#)

#### Catalog Pages/Data Sheets:

- [Enterprise Networks EMEA Product Catalog \(PDF, English\)](#)

#### Product Specifications:

- None Available

#### Application Specifications:

- None Available

#### Instruction Sheets:

- None Available

#### CAD Files: [\(CAD Format & Compression Information\)](#)

- [2D Drawing \(DXF, Version B\)](#)
- [3D Model \(IGES, Version B\)](#)
- [3D Model \(STEP, Version B\)](#)

[List all Documents](#)

#### Additional Information:

- [Product Line Information](#)

#### Related Products:

- [Tooling](#)

### Product Features (Please use the Product Drawing for all design activity)

#### Product Type Features:

- Keyed = No
- [Coupler Type](#) = MJ/MJ
- Performance Category = Cat 5e
- Wiring Pattern = One-to-one

#### Electrical Characteristics:

- Shielded = Yes

#### Dimensions:

- Mount Cutout Dimensions (mm [in]) = 14.78 x 20.07 [.582 x .8]

#### Body Features:

- [Body Style](#) = In-Line

#### Contact Features:

- Contact Base Material = Phosphor Bronze
- Contact Plating, Mating Area, Material = Gold over Nickel

#### Housing Features:

- Housing Color = Black

#### Configuration Features:

- Number of Positions = 8

#### Industry Standards:

- [RoHS/ELV Compliance](#) = RoHS compliant, ELV compliant
- [Lead Free Solder Processes](#) = Not relevant for lead free process
- [RoHS/ELV Compliance History](#) = Always was RoHS compliant

#### Operation/Application:

- Application Use = Wire-to-Panel

#### Product Availability:

- Region = Asia, North America, Latin America

#### Other:

- Brand = TE Connectivity

### Corporate Information

- [About TE](#)
- [Investors](#)
- [News Room](#)
- [Supplier Portal](#)
- [Careers](#)
- [Terms & Conditions](#)

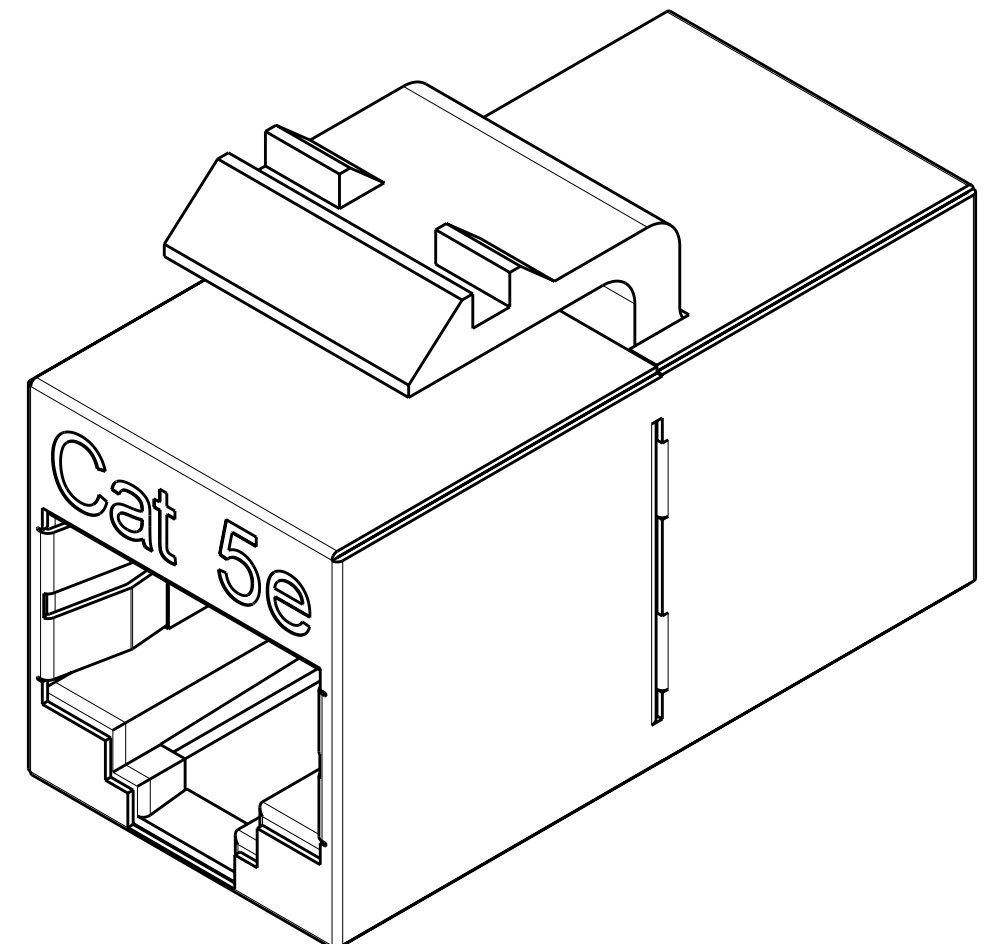
### Quick Links

- [Distributor Inventory](#)
- [Product Cross Reference](#)
- [Documents & Drawings](#)
- [Product Compliance Support Center](#)
- [Site Map](#)

### Customer Support

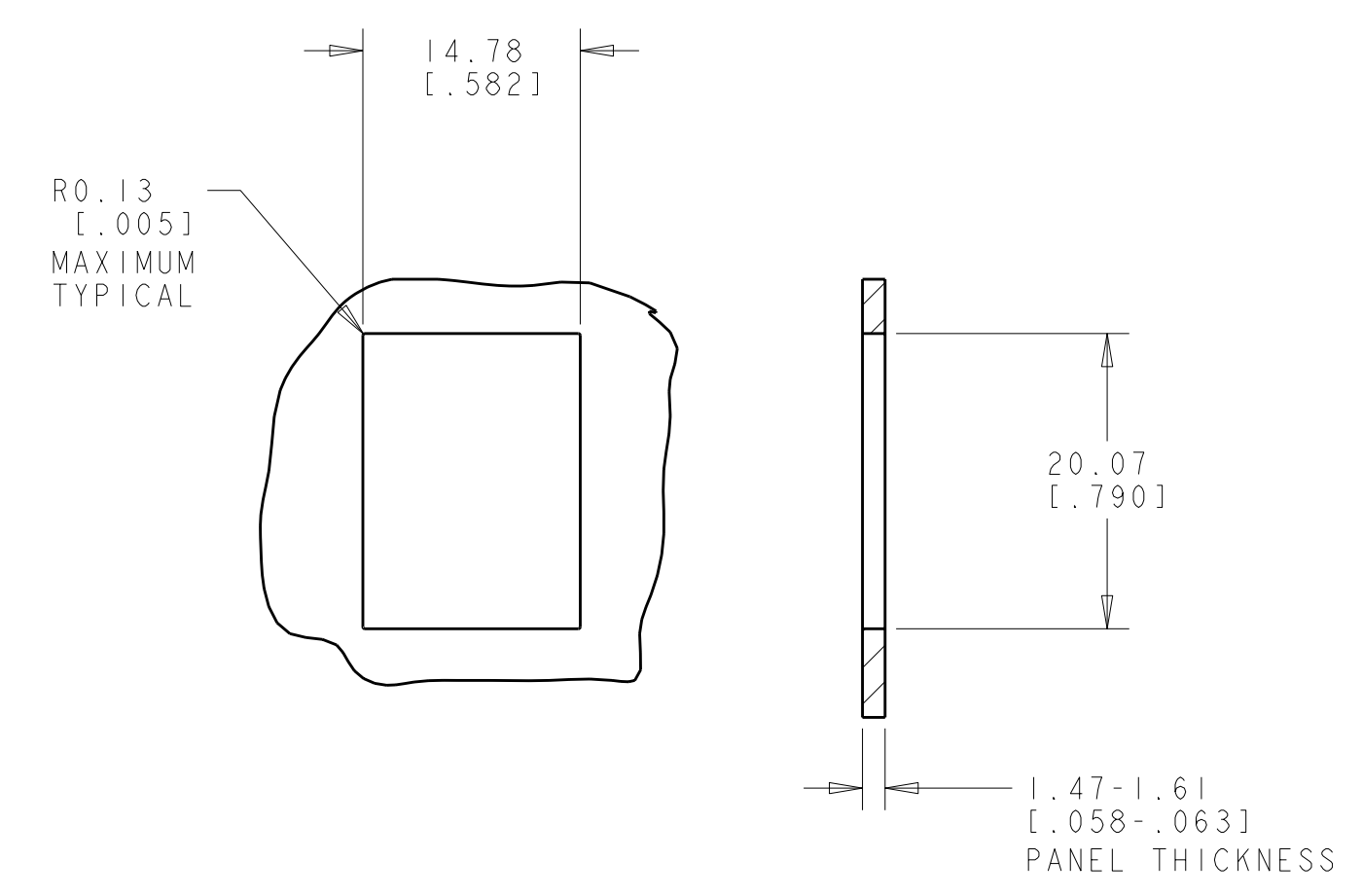
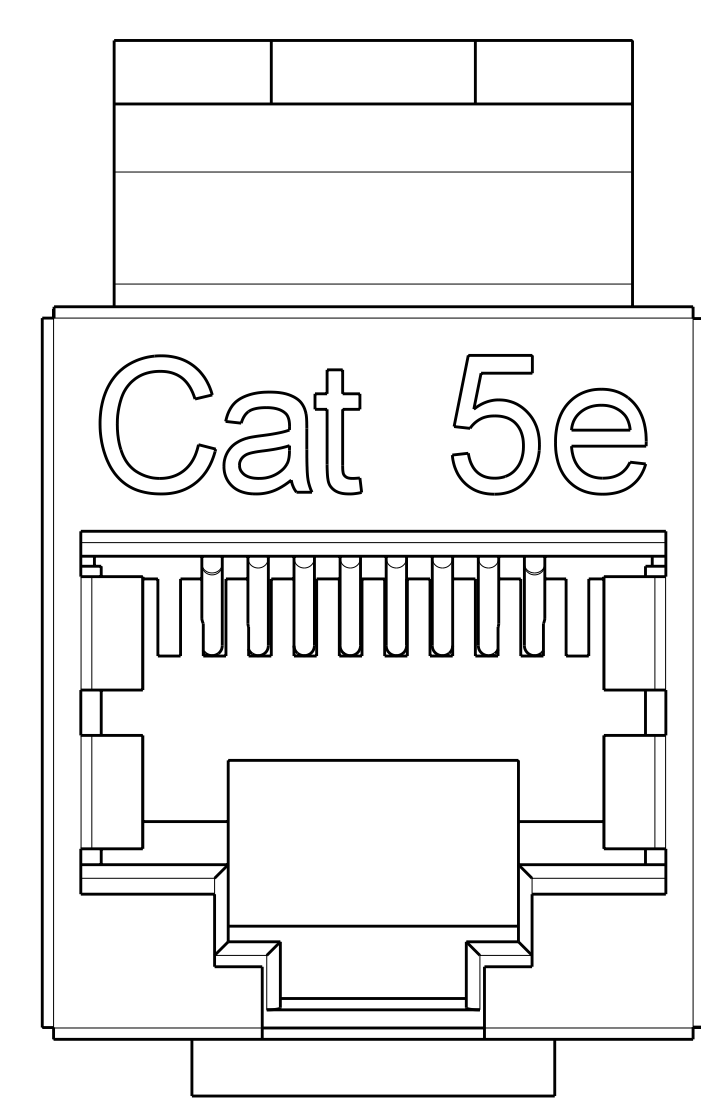
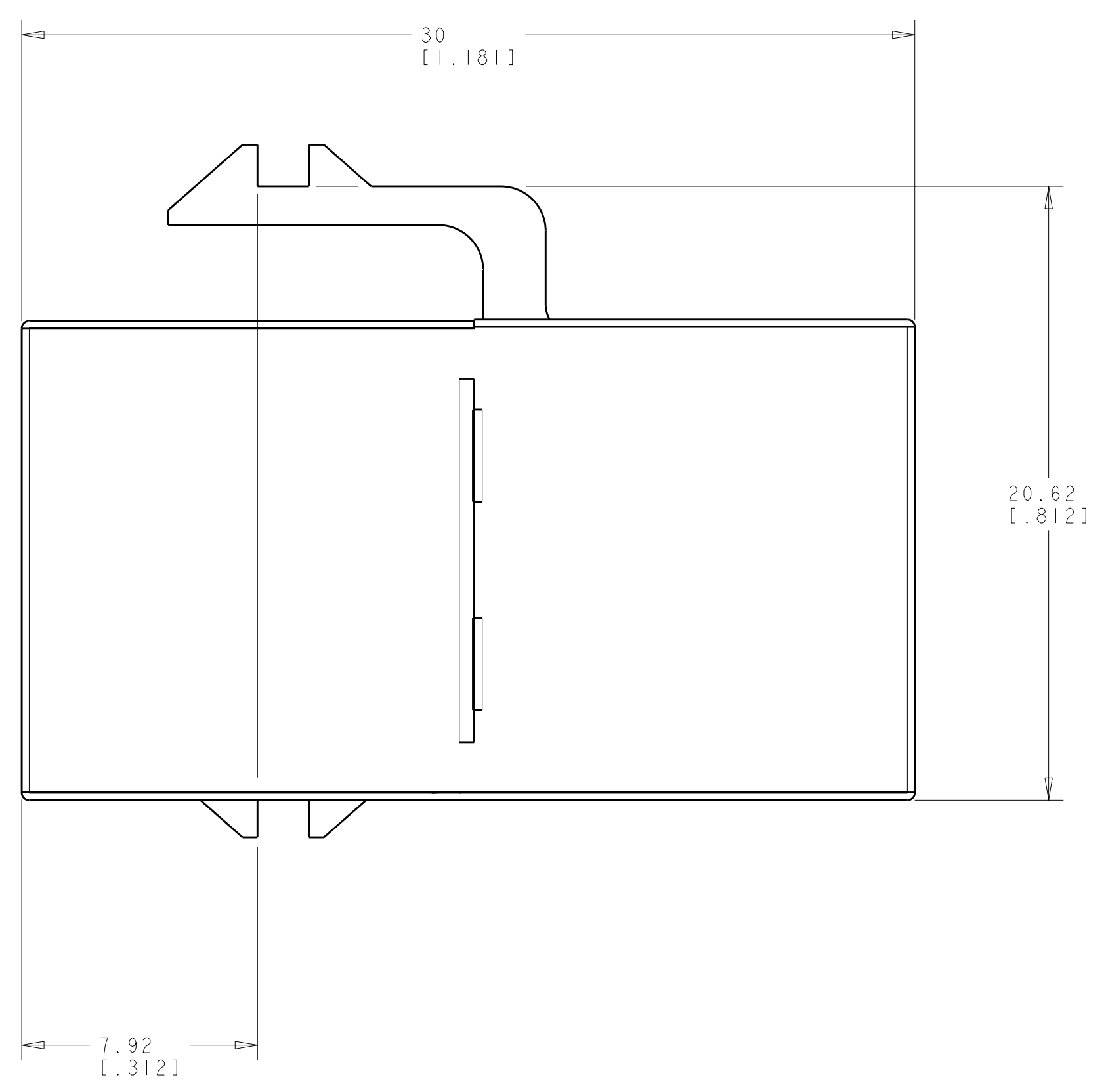
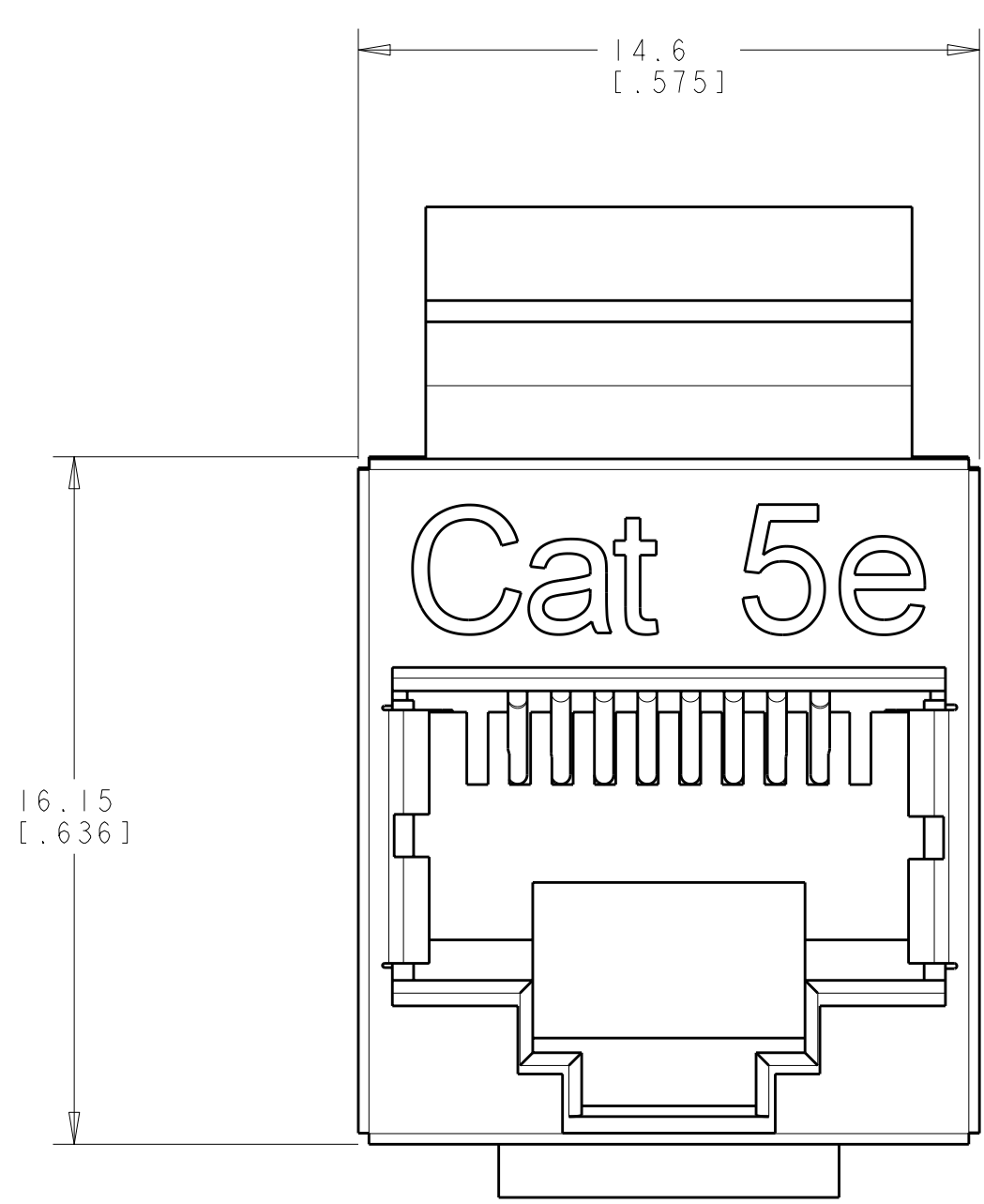
- [Email or Chat With Us](#)
- [Find a Phone Number](#)
- [Knowledge Base](#)
- [Manage Your Account](#)

| LOC |    | DIST |     | REVISIONS           |           |     |      |
|-----|----|------|-----|---------------------|-----------|-----|------|
| HM  | 00 | P    | LTB | DESCRIPTION         | DATE      | DWN | APVD |
|     |    | A    |     | RLSD; ECO-09-027567 | 14DEC2009 | GG  | RA   |

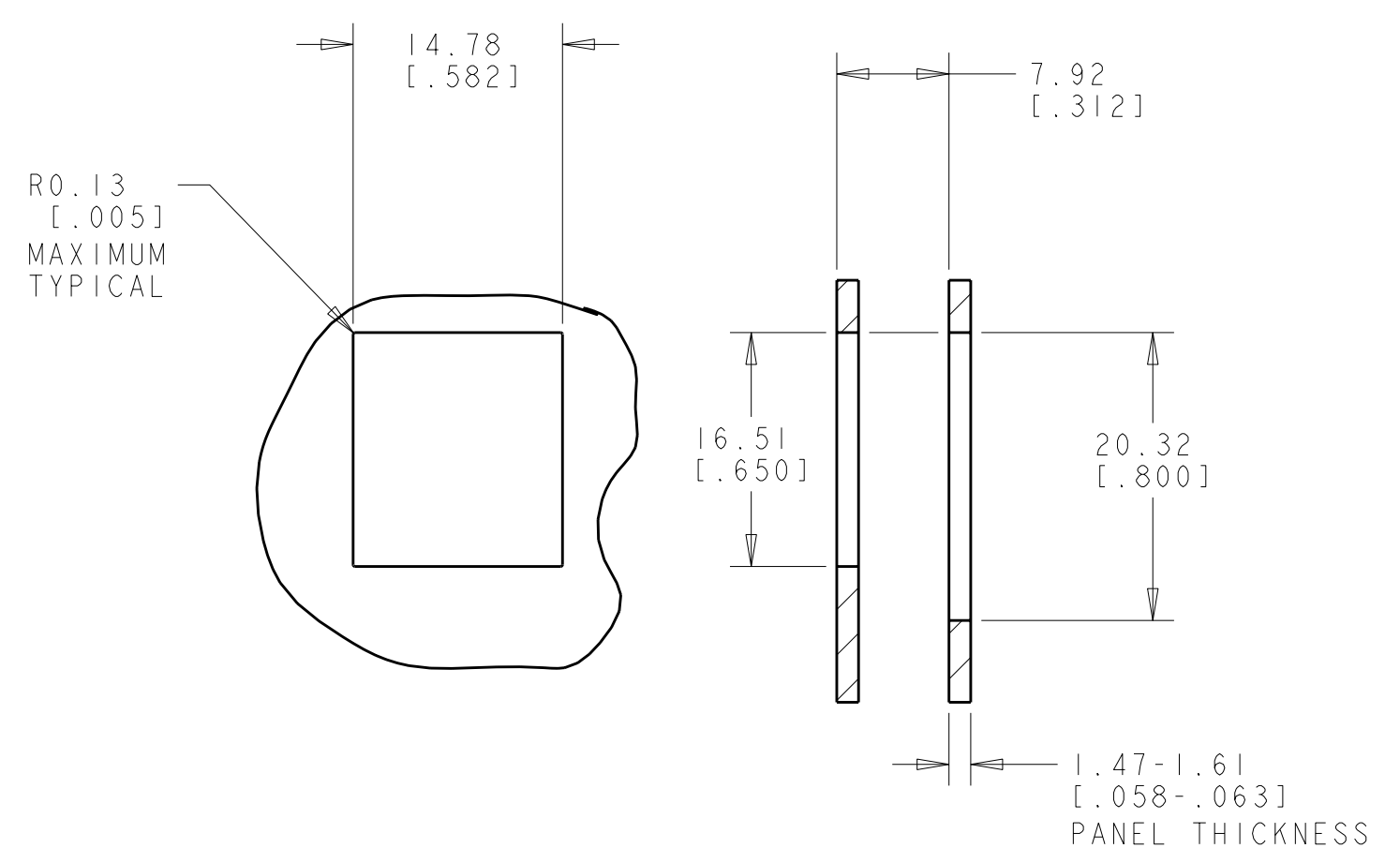


SCALE 4:1

- 1. ALL DIMENSIONS SHOWN ARE NOMINAL UNLESS OTHERWISE SPECIFIED.
- 2. MATERIAL:  
 SHIELDED CASE - COPPER C2680, T=0.25MM, 30u" NICKEL PLATED  
 COUPLER HOUSING - ABS HIGH-IMPACT UL94V-0 THERMOPLASTIC  
 SPRING WIRE - PHOSPHOR BRONZE 5100W TEMPER WIRE, Ø=0.45MM, 50u" GOLD OVER 100u" NICKEL UNDERCOAT.
- 3. MOUNTING PANEL THICKNESS .062 [1.57] NOMINAL.



SINGLE PANEL CUTOUT



SUGGESTED FLUSH MOUNT PANEL APPLICATION CUTOUT

2111122-1  
PART NUMBER

|   |                       |  |                       |  |  |   |  |
|---|-----------------------|--|-----------------------|--|--|---|--|
| DIMENSIONS:<br>INCHES (MM)                                      |                       | TOLERANCES UNLESS OTHERWISE SPECIFIED: |                       | DWN: S. GARRETT 18NOV2009<br>CHK: R. ASHRY 18NOV2009<br>APVD: R. ASHRY 18NOV2009 |  | Tyco Electronics<br>Harrisburg, PA 17105-3608 |  |
| 0 PLC ±<br>1 PLC ±<br>2 PLC ±<br>3 PLC ±<br>4 PLC ±<br>ANGLES ± | ±<br>±<br>±<br>±<br>± | ±<br>±<br>±<br>±<br>±                  | ±<br>±<br>±<br>±<br>± | NAME: COUPLER, SL, INLINE, CAT5E, SHIELDED                                       |  | SIZE: CAGE CODE: DRAWING NO: A100779C=2111122 |  |
| MATERIAL:   |                       | FINISH:                                |                       | WEIGHT:  |  | RESTRICTED TO:                                |  |
| CUSTOMER DRAWING  |                       |  |                       | SCALE: 6:1   |  | SHEET 1 OF 1 REV A                            |  |