



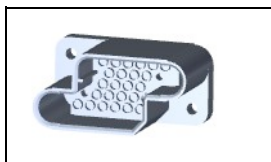
Have a Question?
 Chat with a Product
 Information Specialist

What can we help you find?

[Products](#) |
 [Industries](#) |
 [Resources](#) |
 [About TE](#) |
 [My Account](#) |
 [Innovation](#) |
 [Support Center](#)

211149-1 Product Details

[Share](#) |
 [Print](#) |
 [Email](#)



211149-1

TE Internal Number: 211149-1

Active

[View 3D PDF](#)

5mm (.197") Centerline, 600 V, 14 A max. (Metrimate)

Always EU RoHS/ELV Compliant (Statement of Compliance)

Product Highlights:

- Metrimate Product Line
- Wire-to-Panel / Wire-to-Wire
- Applies To Panel, Applies To Wire/Cable
- Connector
- Housing

[View all Features](#)

Quick Links

- ▶ [Pricing & Availability](#)
- ▶ [Search for Tooling](#)
- ▶ [Product Feature Selector](#)
- ▶ [Contact Us About This Product](#)

[Add to My Part List](#) |
 [Request Sample](#) |
 [Find Similar Products](#) |
 [Buy Product](#)

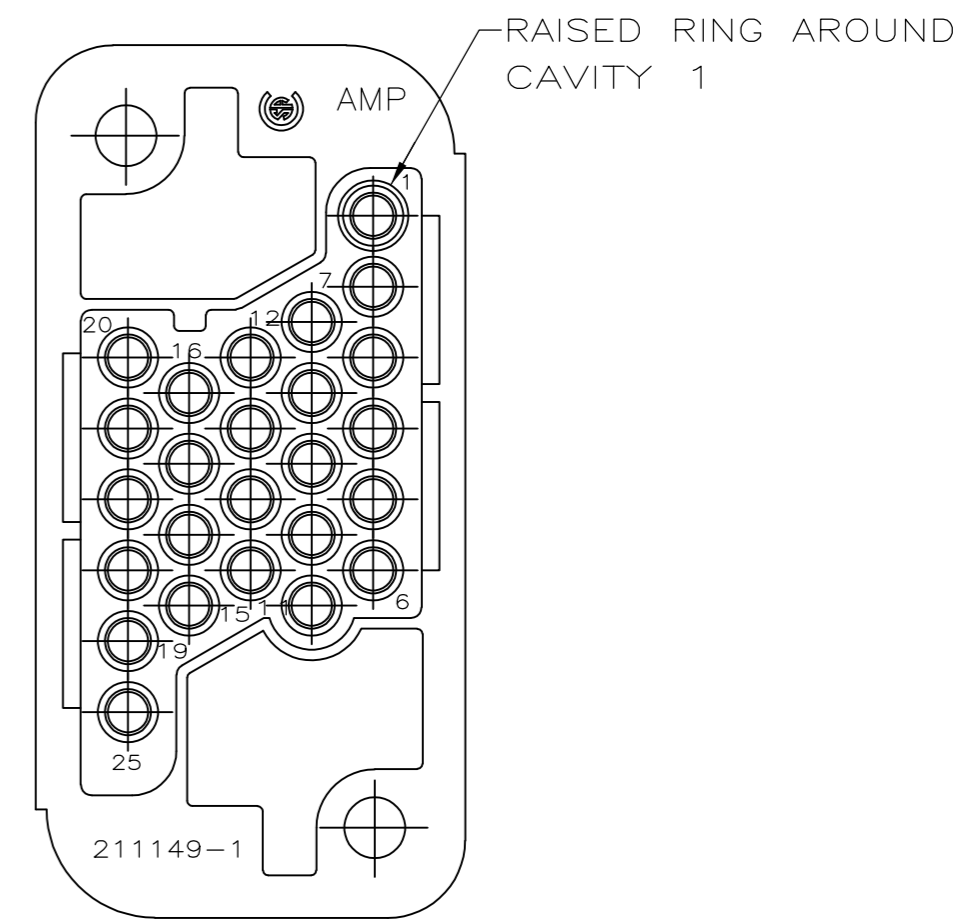
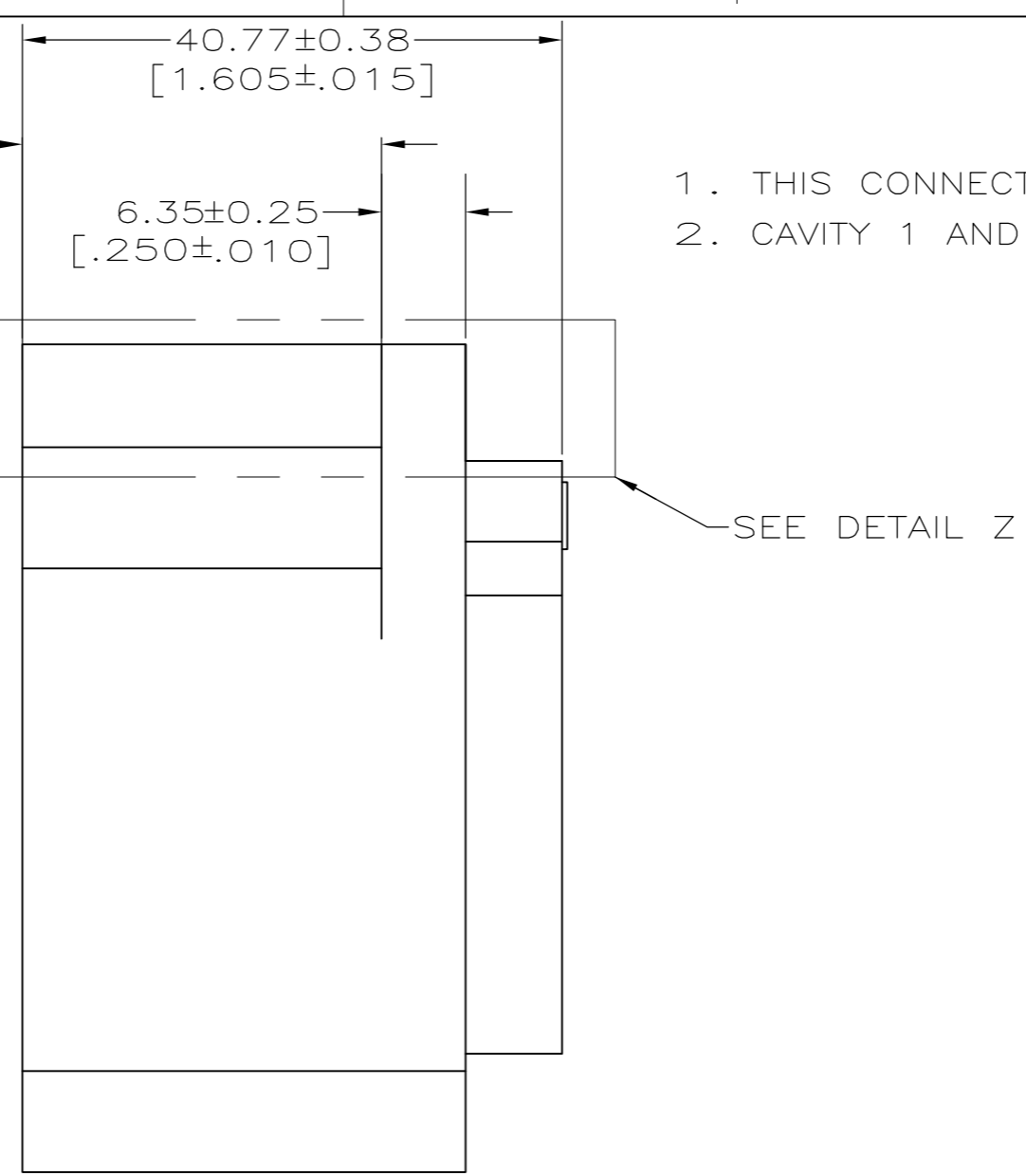
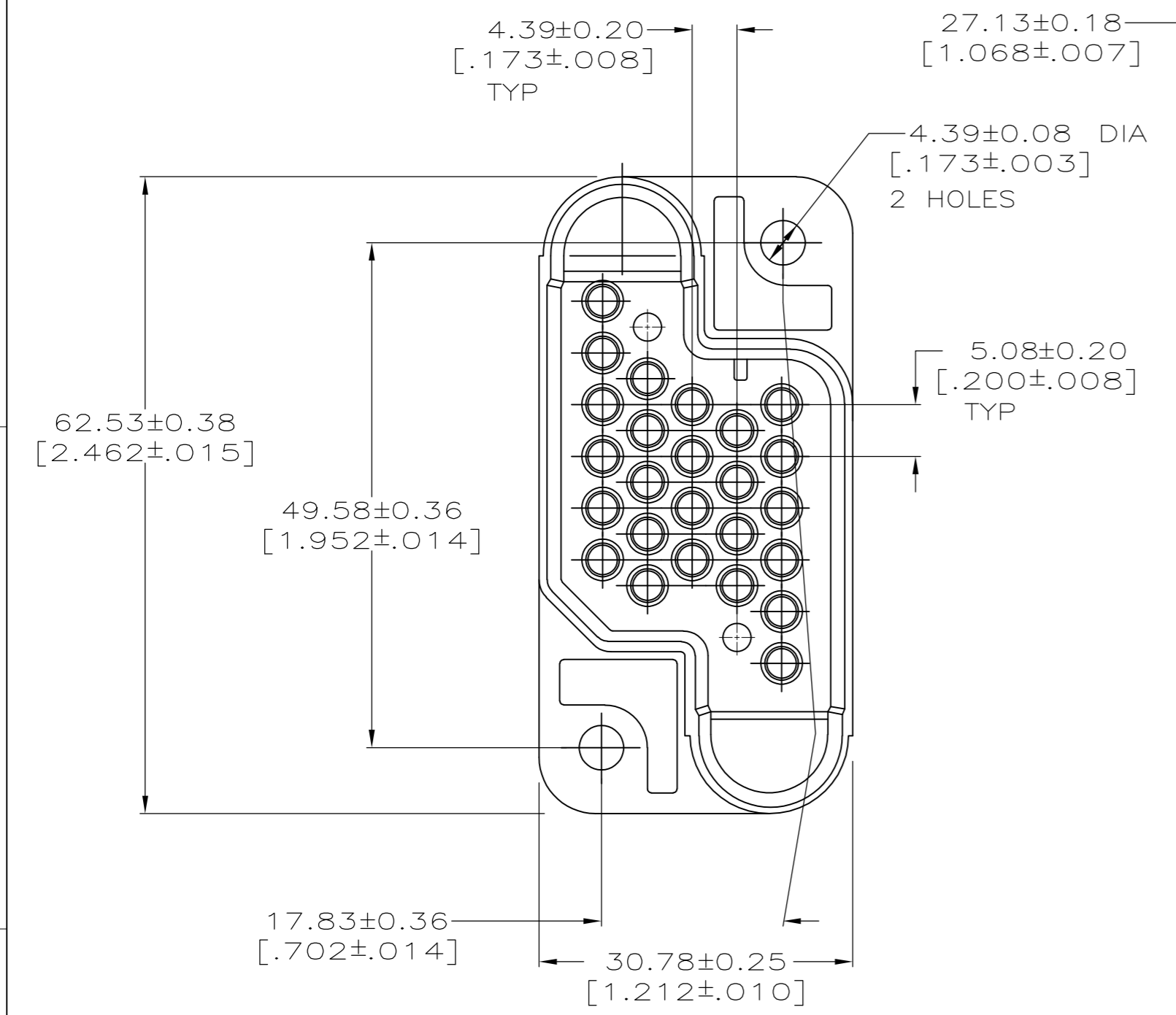
Documentation & Additional Information	
<p>Product Drawings:</p> <ul style="list-style-type: none"> • PIN HOUSING, 25 POSN METRIMATE (PDF, English) <p>Catalog Pages/Data Sheets:</p> <ul style="list-style-type: none"> • METRIMATE_PIN_SOCKET_CATALOG (PDF, English) <p>Product Specifications:</p> <ul style="list-style-type: none"> • None Available <p>Application Specifications:</p> <ul style="list-style-type: none"> • APPLICATION SPECIFICATION, METRIMATE DRAWER CONNECTORS (PDF, English) <p>Instruction Sheets:</p> <ul style="list-style-type: none"> • None Available <p>CAD Files: (CAD Format & Compression Information)</p> <ul style="list-style-type: none"> • 2D Drawing (DXF, Version Z) • 3D Model (IGES, Version Z) • 3D Model (STEP, Version Z) 	<p>Additional Information:</p> <ul style="list-style-type: none"> • Product Line Information <p>Related Products:</p> <ul style="list-style-type: none"> • Tooling

[List all Documents](#)

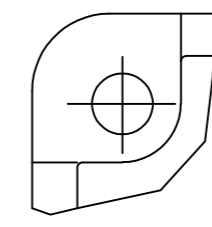
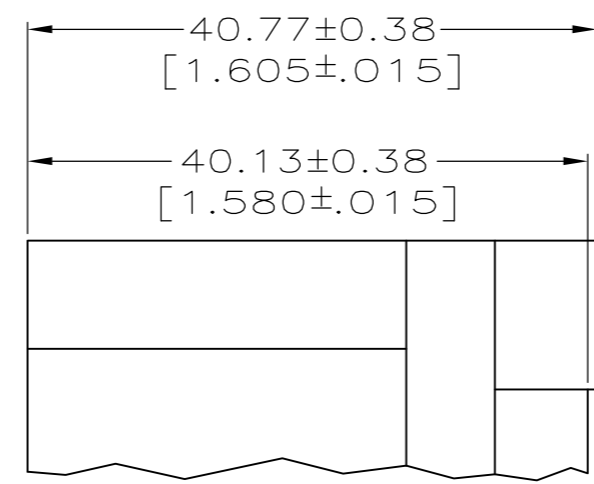
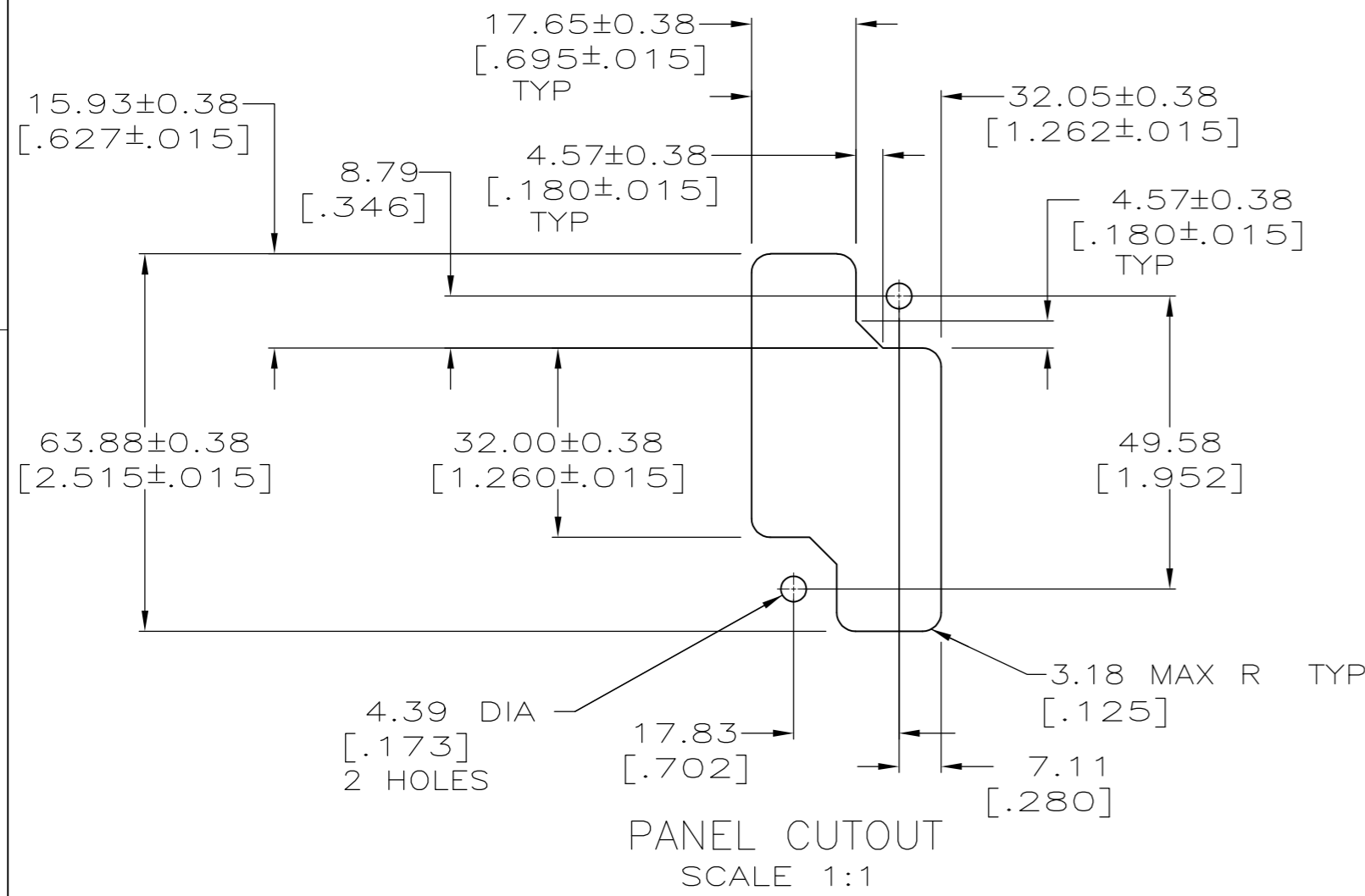
Product Features (Please use the Product Drawing for all design activity)	
<p>Product Type Features:</p> <ul style="list-style-type: none"> • Product Line = Metrimate • Product Type = Connector • Connector Type = Housing • Wire/Cable Type = Discrete Wire • Termination Method to Wire/Cable = Crimp, Solder • UL File Number = E28476 <p>Mechanical Attachment:</p> <ul style="list-style-type: none"> • Panel Mount Retention = With • Panel Mount Retention Type = Screw Mount <p>Electrical Characteristics:</p> <ul style="list-style-type: none"> • Operating Voltage Reference = AC/DC • Operating Voltage (VAC) = 600 • Operating Voltage (VDC) = 600 <p>Dimensions:</p> <ul style="list-style-type: none"> • Panel Thickness (mm [in]) = 0.80 - 2.30 [0.031 - 0.091] <p>Body Features:</p> <ul style="list-style-type: none"> • Wire Type = Stranded • Drawer Style = Standard • Row-to-Row Spacing (mm [in]) = 4.39 [0.173] <p>Contact Features:</p> <ul style="list-style-type: none"> • Contact Type = Pin <p>Housing Features:</p> <ul style="list-style-type: none"> • Connector Style = Receptacle • Housing Material = Polyester 	<p>Configuration Features:</p> <ul style="list-style-type: none"> • Connector Configuration = Drawer • Number of Positions = 25 • Number of Rows = 5 <p>Industry Standards:</p> <ul style="list-style-type: none"> • RoHS/ELV Compliance = RoHS compliant, ELV compliant • Lead Free Solder Processes = Wave solder capable to 240°C, Wave solder capable to 260°C, Wave solder capable to 265°C • RoHS/ELV Compliance History = Always was RoHS compliant • VDE Tested = Yes • Agency/Standard = CSA, UL • UL Rating = Recognized, Certified <p>Environmental:</p> <ul style="list-style-type: none"> • Operating Temperature (°C [°F]) = -55 - +130 [-67 - +266] <p>Conditions for Usage:</p> <ul style="list-style-type: none"> • Applies To = Panel, Wire/Cable • For Use With = Plug Housing <p>Operation/Application:</p> <ul style="list-style-type: none"> • Application Use = Wire-to-Panel / Wire-to-Wire <p>Packaging Features:</p> <ul style="list-style-type: none"> • Packaging Method = Package • Packaging Quantity = 1 <p>Other:</p> <ul style="list-style-type: none"> • Brand = AMP

- Housing Color = Black
- Mating Alignment = With
- Mating Alignment Type = Blindmate
- Centerline (mm [in]) = 5.08 [0.200]
- UL Flammability Rating = UL 94V-0

LOC		DIST		REVISIONS			
BD	39	P	LTR	DESCRIPTION	DATE	OWN	APVD
		F1		REVISED PER ECO-11-004820	11MAR11	RK	HMR



1. THIS CONNECTOR MATES WITH SOCKET HOUSING 211150.
2. CAVITY 1 AND 25 SHOULD NOT BE USED WITH GROUND PIN.



SEE DETAIL Z	211149-3
AS SHOWN	211149-1
STANDOFF	PART NO

THIS DRAWING IS A CONTROLLED DOCUMENT.

DWN	C.OBERMAN	01/14/92	STE TE Connectivity
CHK	R.STONE	1-22-92	
APVD	A.TRAVIS	1-22-92	NAME
DIMENSIONS: mm [INCHES]			PRODUCT SPEC
TOLERANCES UNLESS OTHERWISE SPECIFIED:			APPLICATION SPEC
0 PLC	± -		SIZE
1 PLC	± -		CAGE CODE
2 PLC	± -		DRAWING NO
3 PLC	± 0.13 [.005]		RESTRICTED TO
4 PLC	± -		
ANGLES	± -		
MATERIAL	FINISH	WEIGHT	
POLYESTER, UL 94V-0 RATED, BLACK	-	-	A2 00779 C-211149
CUSTOMER DRAWING			SCALE 2:1 SHEET 1 OF 1 REV F1