

Distributed by:

JAMECO[®]
ELECTRONICS

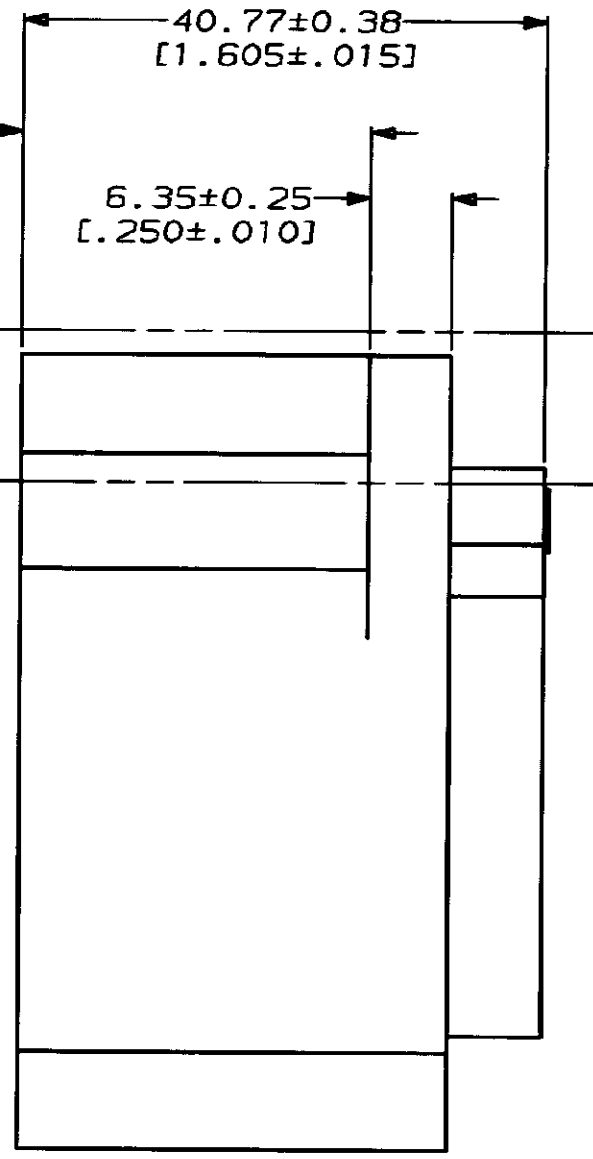
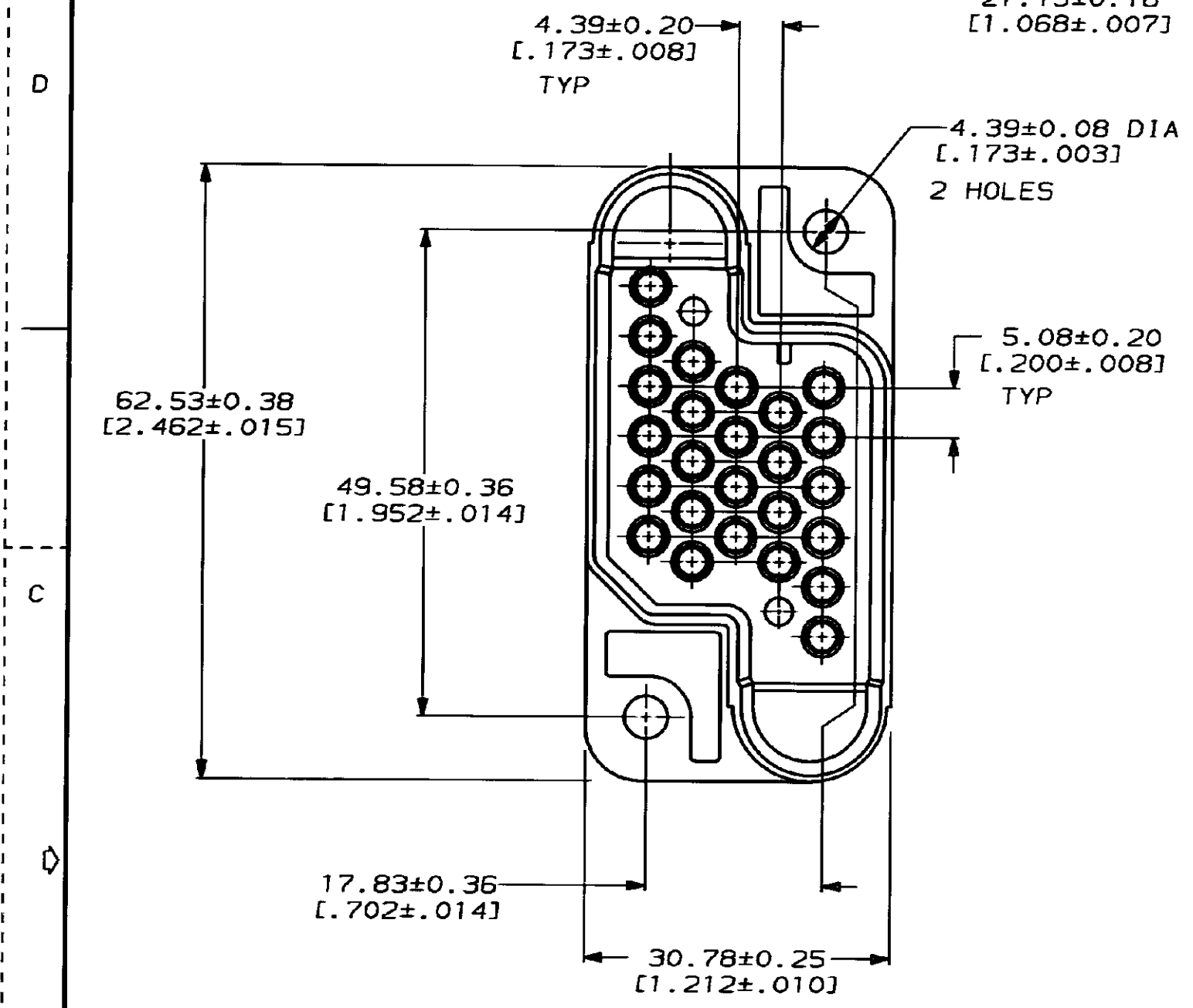
www.Jameco.com ♦ 1-800-831-4242

The content and copyrights of the attached
material are the property of its owner.

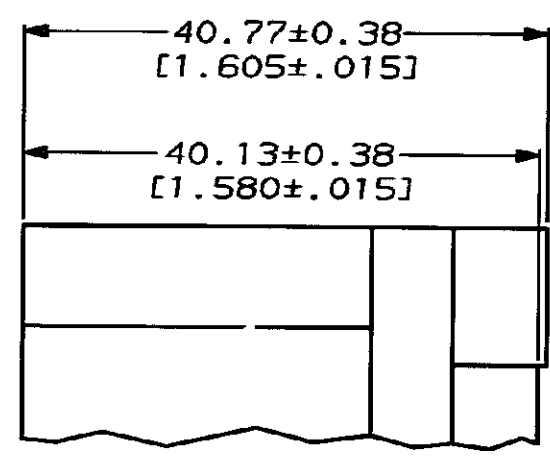
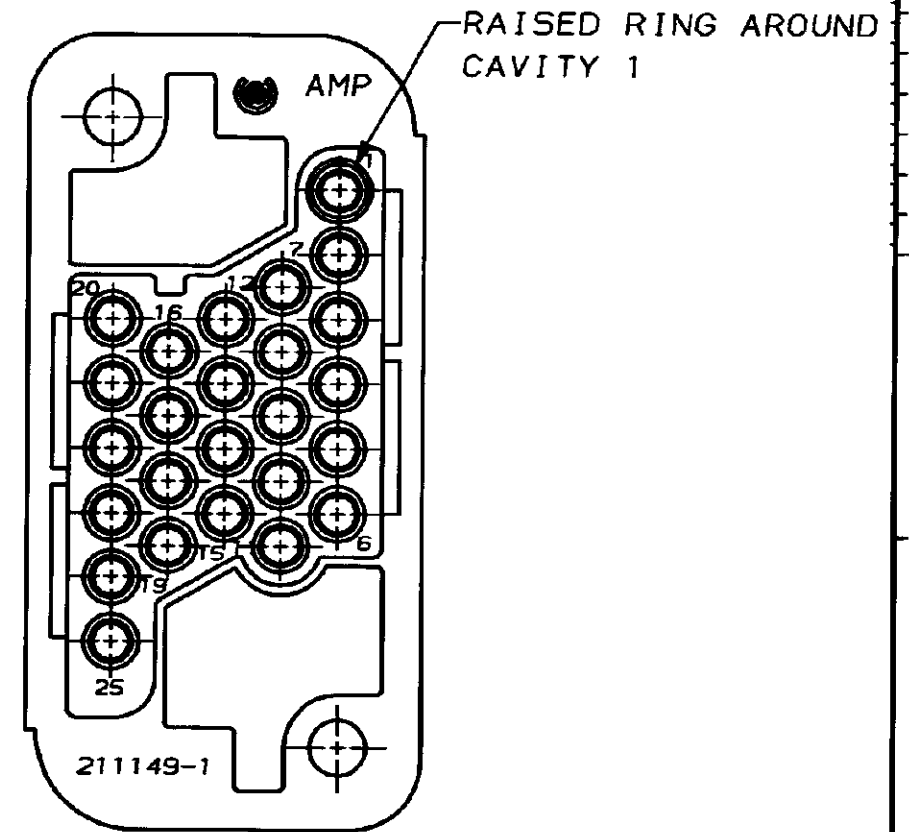
Jameco Part Number 839535

4
DRAWING MADE IN THIRD ANGLE PROJECTION
THIS DRAWING IS UNPUBLISHED. RELEASED FOR PUBLICATION
© COPYRIGHT 19 BY AMP INCORPORATED. ALL INTERNATIONAL RIGHTS RESERVED.

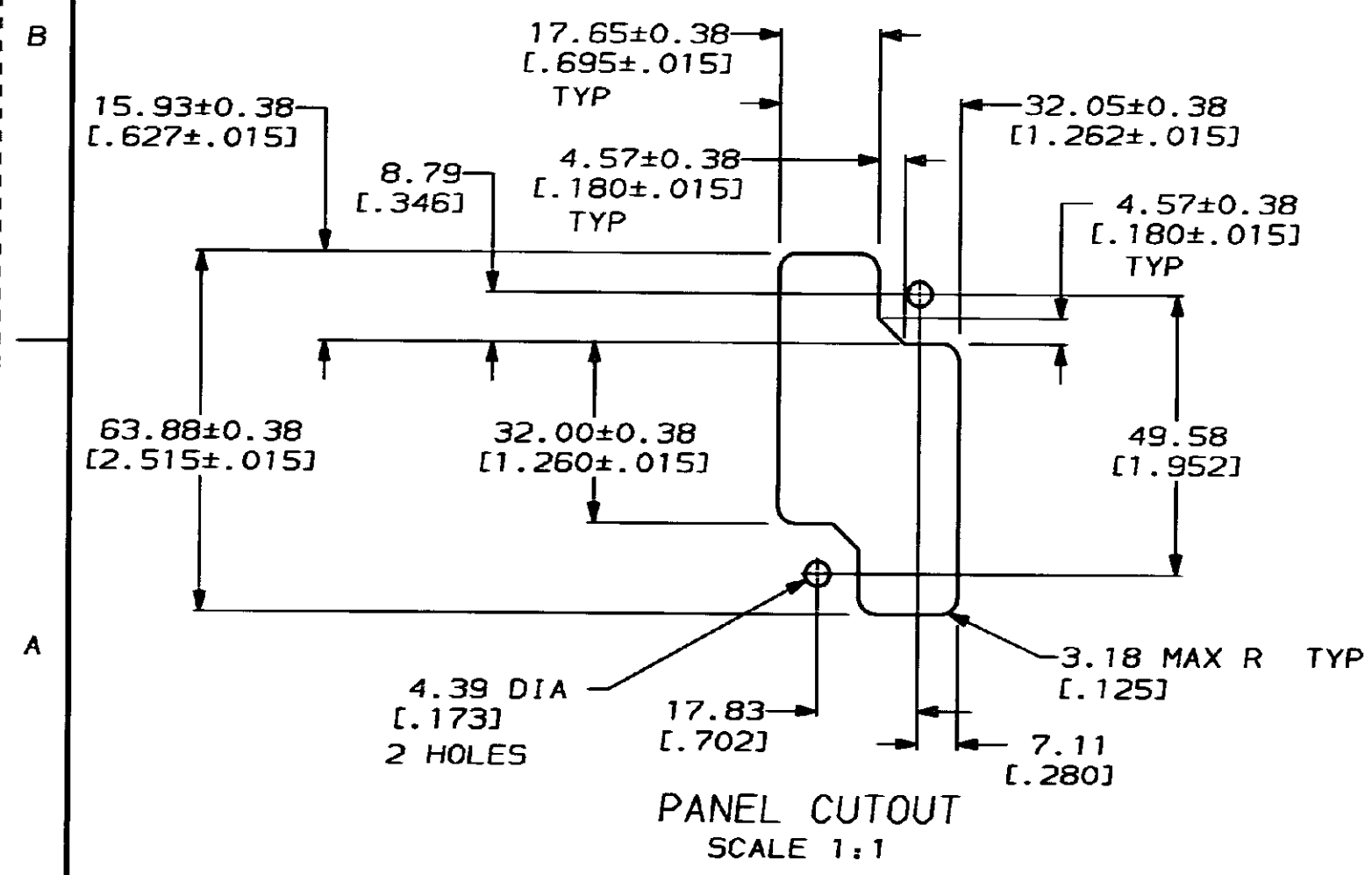
| REVISIONS | | | | | |
|-----------|-----|------|--------------------------------|----------|------|
| NO | LOC | DIST | DESCRIPTION | DATE | APPD |
| 1 | BD | 39 | E REDRAWN & REV PER ECN BD5737 | 01/14/92 | - |
| | | | F REV PER EC 0020-0925-93 | 08/11/93 | AT |



1. THIS CONNECTOR MATES WITH SOCKET HOUSING 211150.
2. CAVITY 1 AND 25 SHOULD NOT BE USED WITH GROUND PIN.



DETAIL Z
 RAISED STANDOFF 2 PLACES
 211149-3 ONLY



| | |
|--------------|----------|
| SEE DETAIL Z | 211149-3 |
| AS SHOWN | 211149-1 |
| STANDOFF | PART NO |
| | PART NO |

| | | | |
|--|---------------------------|--|----------------------|
| DO NOT SCALE PRINT. UNLESS SPECIFIED DIMENSIONS IN mm [INCHES] TOLERANCES ON: 2 PLC DEC ± 0.13 [.005] 3 PLC DEC ± - ANGLES ± - | DR 01/14/92 C. OBERMAN | AMP AMP Incorporated Harrisburg, PA 17105-3608 | |
| | CHK 1-22-92 R. STONE | | |
| MATERIAL POLYESTER, UL 94V-0 RATED, BLACK | APPD 1-22-92 A. TRAVIS | NAME PIN HOUSING, 25 POSN METRIMATE | |
| FINISH - | APPD 1-23-92 C. RÖHDE | SIZE C 00779 | DRAWING NO 211149 |
| WEIGHT - | APPLICATION SPEC - | SCALE 2:1 | SHEET 1 OF 1 |

CUSTOMER DRAWING