



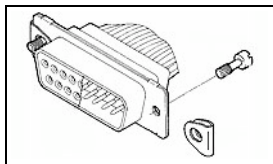
**Have a Question?**  
 Chat with a Product  
 Information Specialist

What can we help you find?

[Products](#) | 
 [Industries](#) | 
 [Resources](#) | 
 [About TE](#) | 
 [My Account](#) | 
 [Innovation](#) | 
 [Support Center](#)

**211883-5 Product Details**

[Share](#) | 
 [Print](#) | 
 [Email](#)



**211883-5**

TE Internal Number: 211883-5

Active

[View 3D PDF](#)

**Hardware (AMPLIMITE)**

Always EU RoHS/ELV Compliant (Statement of Compliance)

**Product Highlights:**

- Accessory Type = Male Screw Retainers
- Thread Size = 4-40
- Passivated Screw Finish
- Packaging Method = Individual
- RoHS compliant, ELV compliant

[View all Features](#)

**Quick Links**

- ▶ [Pricing & Availability](#)
- ▶ [Search for Tooling](#)
- ▶ [Product Feature Selector](#)
- ▶ [Contact Us About This Product](#)

[Add to My Part List](#) | 
 [Request Sample](#) | 
 [Find Similar Products](#) | 
 [Buy Product](#)

Documentation & Additional Information	
<p><b>Product Drawings:</b></p> <ul style="list-style-type: none"> <li>• <a href="#">SCREW-LOCK ASSEMBLE,MALE,AMPLIMITE,KIT</a> (PDF, English)</li> </ul> <p><b>Catalog Pages/Data Sheets:</b></p> <ul style="list-style-type: none"> <li>• None Available</li> </ul> <p><b>Product Specifications:</b></p> <ul style="list-style-type: none"> <li>• None Available</li> </ul> <p><b>Application Specifications:</b></p> <ul style="list-style-type: none"> <li>• None Available</li> </ul> <p><b>Instruction Sheets:</b></p> <ul style="list-style-type: none"> <li>• None Available</li> </ul> <p><b>CAD Files:</b> (<a href="#">CAD Format &amp; Compression Information</a>)</p> <ul style="list-style-type: none"> <li>• <a href="#">2D Drawing</a> (DXF, Version F)</li> <li>• <a href="#">3D Model</a> (IGES, Version F)</li> <li>• <a href="#">3D Model</a> (STEP, Version F)</li> </ul>	<p><b>Additional Information:</b></p> <ul style="list-style-type: none"> <li>• <a href="#">Product Line Information</a></li> </ul> <p><b>Related Products:</b></p> <ul style="list-style-type: none"> <li>• <a href="#">Tooling</a></li> </ul>

[List all Documents](#)

Product Features (Please use the Product Drawing for all design activity)	
<p><b>Product Type Features:</b></p> <ul style="list-style-type: none"> <li>• <a href="#">Accessory Type</a> = Male Screw Retainers</li> <li>• <a href="#">Thread Size</a> = 4-40</li> </ul> <p><b>Body Features:</b></p> <ul style="list-style-type: none"> <li>• <a href="#">Screw Finish</a> = Passivated</li> <li>• <a href="#">Screw Material</a> = Stainless Steel</li> <li>• <a href="#">Retainer Clip Material</a> = Stainless Steel</li> <li>• <a href="#">Retainer Clip Plating</a> = Passivated</li> </ul> <p><b>Industry Standards:</b></p> <ul style="list-style-type: none"> <li>• <a href="#">Government/Industry Qualification</a> = Yes</li> <li>• <a href="#">Government/Industry Part Number</a> = M24308/25-6P</li> <li>• <a href="#">RoHS/ELV Compliance</a> = RoHS compliant, ELV compliant</li> <li>• <a href="#">Lead Free Solder Processes</a> = Wave solder capable to 240°C, Wave solder capable to 260°C, Wave solder capable to 265°C, Reflow solder capable to 245°C, Reflow solder capable to 260°C, Pin-in-Paste capable to 245°C, Pin-in-Paste capable to 260°C</li> <li>• <a href="#">RoHS/ELV Compliance History</a> = Always was RoHS compliant</li> </ul>	<p><b>Packaging Features:</b></p> <ul style="list-style-type: none"> <li>• <a href="#">Packaging Method</a> = Individual</li> </ul> <p><b>Other:</b></p> <ul style="list-style-type: none"> <li>• <a href="#">Brand</a> = AMP</li> <li>• <a href="#">Comment</a> = Fillister Head Screws</li> </ul>

**Corporate Information**

[About TE](#)  
[Investors](#)

**Quick Links**

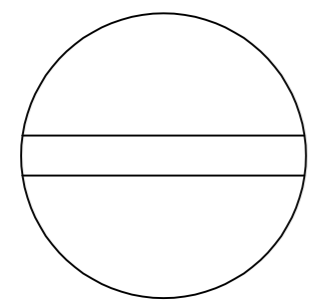
[Distributor Inventory](#)  
[Product Cross Reference](#)

**Customer Support**

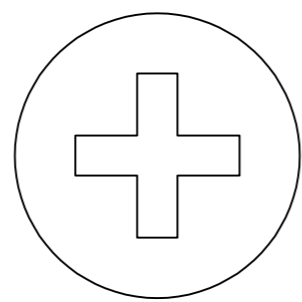
[Email or Chat With Us](#)  
[Find a Phone Number](#)

THIS DRAWING IS UNPUBLISHED. RELEASED FOR PUBLICATION  
 © COPYRIGHT - By - ALL RIGHTS RESERVED.

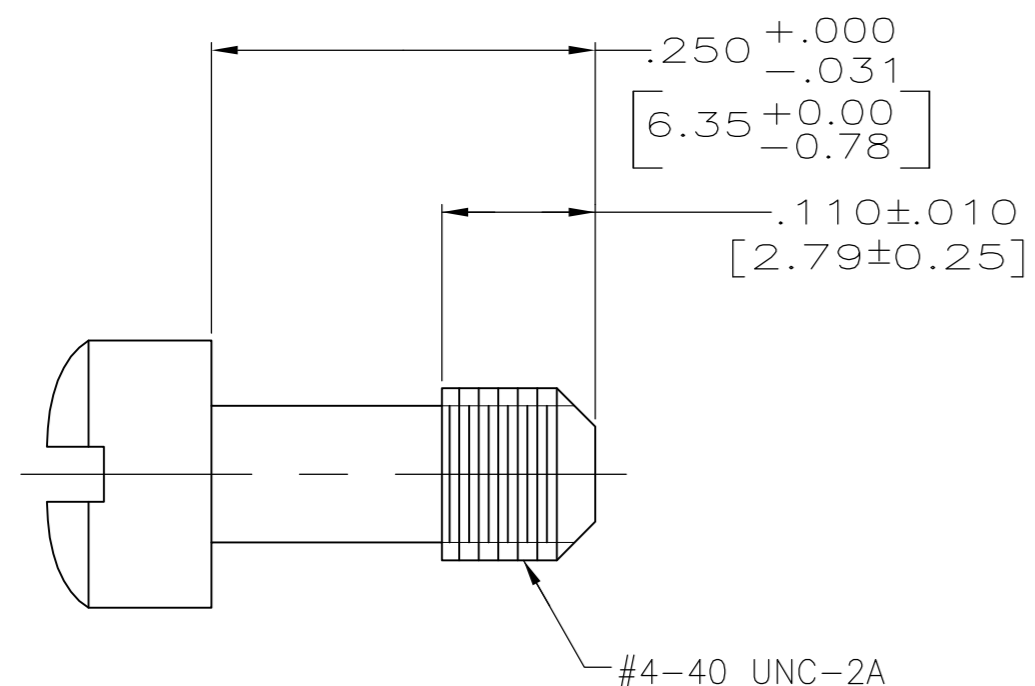
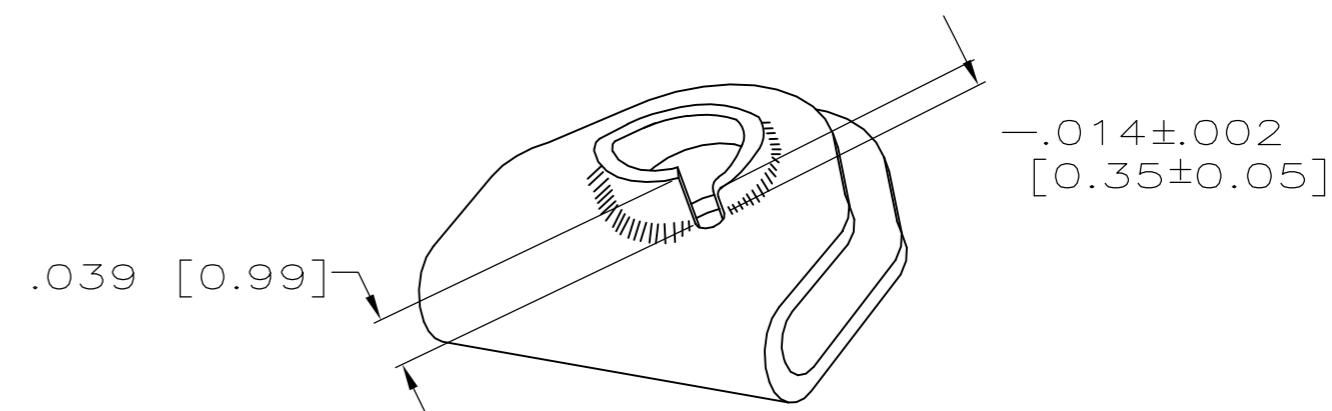
LOC		DIST		REVISIONS			
P	LTR	DESCRIPTION		DATE	DWN	APVD	
	F1	REVISED PER ECO-11-005030		11MAR11	RK	HMR	



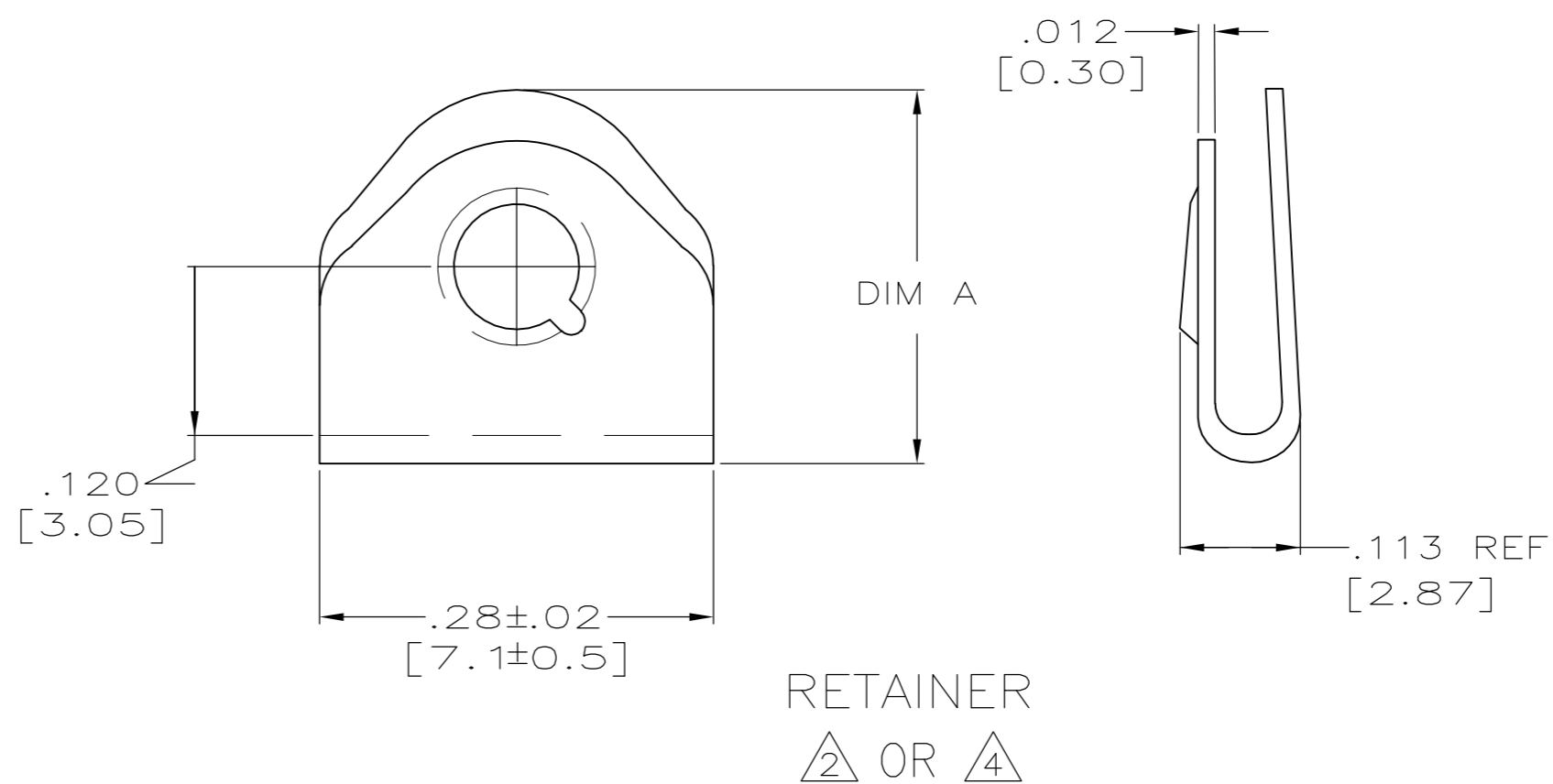
FILLISTER HEAD REF



PHILLIPS HEAD REF



SCREW, (TYPE; SEE TABLE)  
 ① OR ③



RETAINER  
 ② OR ④

- ① MAT'L: STAINLESS STEEL PER ASTM-A-582  
FINISH: PASSIVATED PER SAE-AMS-2700
  - ② MAT'L: STAINLESS STEEL PER QQ-S-766  
FINISH: PASSIVATED PER SAE-AMS-2700
  - ③ MAT'L: BRASS PER ASTM-B-16  
FINISH: GOLD PLATE PER ASTM-B-488  
OVER COPPER PER MIL-C-14550
  - ④ MAT'L: BeCu PER QQ-C-530  
FINISH: GOLD PLATE PER ASTM-B-488  
OVER COPPER PER MIL-C-14550
5. PARTS ARE PACKAGED UNASSEMBLED.

PHILLIPS HEAD	.240±.010 [6.10±0.25]	-	AS SHOWN ① ②	211883-7
FILLISTER HEAD	.240±.010 [6.10±0.25]	-	AS SHOWN ① ②	211883-6
FILLISTER HEAD	.265±.015 [6.73±0.38]	M24308/25-6P	AS SHOWN ① ②	211883-5
FILLISTER HEAD	.265±.015 [6.73±0.38]	-	AS SHOWN ③ ④	211883-1
SCREW HEAD TYPE	DIM A	MILITARY PART NO	DESCRIPTION	PART NO.

THIS DRAWING IS A CONTROLLED DOCUMENT.

DWN	C.C.THOMAS	2-11-03
CHK	D.MILLER	2-11-03
APVD	D.MILLER	2-11-03
PRODUCT SPEC		
APPLICATION SPEC		
WEIGHT	-	
CUSTOMER DRAWING		

**STE** TE Connectivity

NAME: SCREW-LOCK ASSEMBLY, MALE, AMPLIMITE, KIT

SIZE	A2	CAGE CODE	00779	DRAWING NO	C-211883	RESTRICTED TO	-
SCALE	8:1	SHEET	1 of 1	REV	F1		