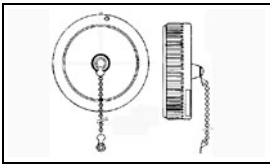


211903-1 Product Details

[Share](#) [Print](#) [Email](#)



211903-1

TE Internal Number: 211903-1
Active

[View 3D PDF](#)

CPC Accessories

Always EU RoHS/ELV Compliant (Statement of Compliance)

Product Highlights:

- Accessory Type = Sealing Cap
- Shell Size = 22
- Metal Bead Chain Cap To Flange Attachment
- RoHS compliant, ELV compliant
- Lead Free Solder Processes = Not relevant for lead free process

[View all Features](#)

Quick Links

- ▶ [Pricing & Availability](#)
- ▶ [Search for Tooling](#)
- ▶ [Product Feature Selector](#)
- ▶ [Contact Us About This Product](#)

[Add to My Part List](#) [Request Sample](#) [Find Similar Products](#) [Buy Product](#)

Documentation & Additional Information

Product Drawings:

- [PROTECTIVE CAP ASSEMBLY, SIZE 22, CMC \(PDF, English\)](#)

Catalog Pages/Data Sheets:

- [AMP Circular Connectors for Commercial Signal & Powe... \(PDF, English\)](#)

Product Specifications:

- None Available

Application Specifications:

- None Available

Instruction Sheets:

- None Available

CAD Files: [\(CAD Format & Compression Information\)](#)

- [2D Drawing \(DXF, Version F\)](#)
- [3D Model \(IGES, Version F\)](#)
- [3D Model \(STEP, Version F\)](#)

[List all Documents](#)

Additional Information:

- [Product Line Information](#)

Related Products:

- [Tooling](#)

Product Features (Please use the Product Drawing for all design activity)

Product Type Features:

- [Accessory Type](#) = Sealing Cap
- [Shell Size](#) = 22

Mechanical Attachment:

- [Cap To Flange Attachment](#) = Metal Bead Chain
- [Bead Chain Coupling Material](#) = Nickel Plated Brass
- [Bead Chain Material](#) = Nickel Plated Steel
- [Sealing Gasket Material](#) = Elastomer
- [Sealing Cap Material](#) = Zinc Alloy

Body Features:

- [Sealing Cap Plating](#) = Nickel

Industry Standards:

- [RoHS/ELV Compliance](#) = RoHS compliant, ELV compliant
- [Lead Free Solder Processes](#) = Not relevant for lead free process
- [RoHS/ELV Compliance History](#) = Always was RoHS compliant

Other:

- [Brand](#) = AMP
- [Comment](#) = For Metal-Shell CPC Receptacles Only.

Corporate Information

- [About TE](#)
- [Investors](#)
- [News Room](#)
- [Supplier Portal](#)
- [Careers](#)
- [Terms & Conditions](#)
- [Privacy Policy](#)

Quick Links

- [Distributor Inventory](#)
- [Product Cross Reference](#)
- [Documents & Drawings](#)
- [Product Compliance Support Center](#)
- [Site Map](#)

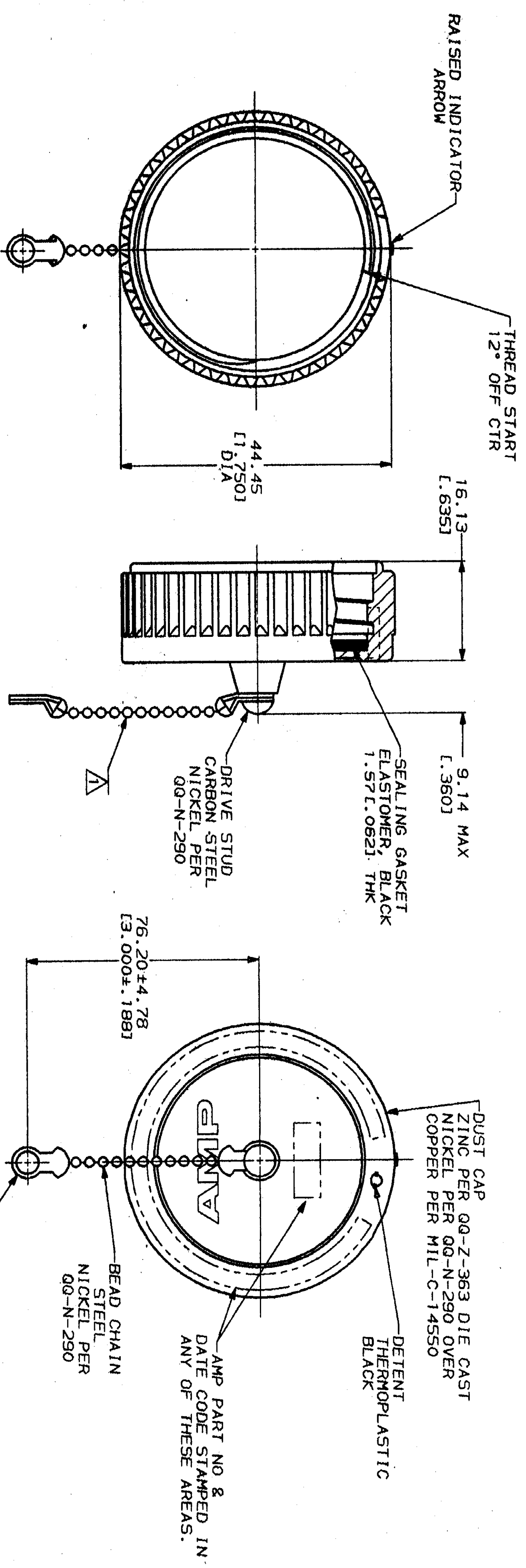
Customer Support

- [Email or Chat With Us](#)
- [Find a Phone Number](#)
- [Knowledge Base](#)
- [Manage Your Account](#)

Keep Me Informed



REV	DATE	APPD	DESCRIPTION
23	BD 39		REVISIONS
			REMANAN & REV EOM 805241



△ BEADED PORTION OF CHAIN MUST ROTATE FREELY. THE EYELET OF THE CHAIN IS NOT REQUIRED TO SPIN FREELY AROUND THE STUD.

DO NOT SCALE PRINT. UNLESS SPECIFIED DIMENSIONS IN INCHES TOLERANCES ON: 1 P.L.C. DEC ± .010 2 P.L.C. DEC ± 0.25(.010) 3 P.L.C. DEC ± .010 ANGLES ± .1°		DR 08/13/91 R. SHINEY	9-11-91	AMP	AMP Incorporated Harrisburg, PA 17105-3608
MATERIAL: SEE CALLOUTS		APPD: K. Blawie	9-17-91	NAME:	PROTECTIVE CAP ASSEMBLY, SIZE 22, CMC
FINISH: SEE CALLOUTS		APPD: G. Jackson	9/14/91	SIZE:	
WEIGHT: -		APPLICATION SPEC:	SCALE: 2:1	CASE CODE:	211903
				DRAWING NO:	211903
				SHEET:	1 OF 1

CUSTOMER DRAWING