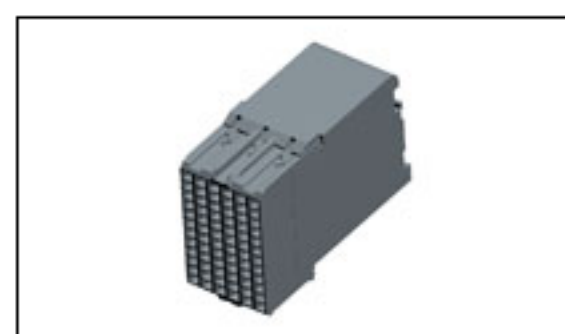


## 2132739-1 Product Details

[Share](#) | [Print](#) | [Email](#)


**2132739-1**

TE Internal Number: 2132739-1

**Active**

[View 3D PDF](#)

### Impact High Density Backplane Connectors

[Always EU RoHS/ELV Compliant \(Statement of Compliance\)](#)

#### Product Highlights:

- IMPACT Product Line
- Board-to-Board
- Applies To Printed Circuit Board
- Board-to-Board Configuration = Right Angle
- Connector

[View all Features](#)

#### Quick Links

- ▶ [Check Pricing & Availability](#)
- ▶ [Search for Tooling](#)
- ▶ [Product Feature Selector](#)
- ▶ [Contact Us About This Product](#)

[Add to My Part List](#) | [Request Sample](#) | [Find Similar Products](#) | [Buy Product](#)

Documentation & Additional Information	
<p><b>Product Drawings:</b></p> <ul style="list-style-type: none"> <li>• <a href="#">IMPACT, 4 PAIR, DAUGHTERCARD 6 COLUMN, UNGUIDED, SIG...</a> (PDF, English)</li> </ul> <p><b>Catalog Pages/Data Sheets:</b></p> <ul style="list-style-type: none"> <li>• None Available</li> </ul> <p><b>Product Specifications:</b></p> <ul style="list-style-type: none"> <li>• None Available</li> </ul> <p><b>Application Specifications:</b></p> <ul style="list-style-type: none"> <li>• None Available</li> </ul> <p><b>Instruction Sheets:</b></p> <ul style="list-style-type: none"> <li>• None Available</li> </ul> <p><b>CAD Files:</b> (<a href="#">CAD Format &amp; Compression Information</a>)</p> <ul style="list-style-type: none"> <li>• <a href="#">2D Drawing</a> (DXF, Version A)</li> <li>• <a href="#">3D Model</a> (IGES, Version A)</li> <li>• <a href="#">3D Model</a> (STEP, Version A)</li> </ul>	<p><b>Related Products:</b></p> <ul style="list-style-type: none"> <li>• <a href="#">Tooling</a></li> </ul>

[List all Documents](#)

Product Features (Please use the Product Drawing for all design activity)	
<p><b>Product Type Features:</b></p> <ul style="list-style-type: none"> <li>• Product Line = IMPACT</li> <li>• Product Type = Connector</li> <li>• Connector Type = Connector Assembly</li> <li>• PCB Mount Retention = With</li> <li>• Termination Method to PC Board = Through Hole - Press Fit</li> <li>• PCB Mounting Orientation = Right Angle</li> <li>• PCB Hole Diameter (mm [in]) = 0.39 [0.015]</li> <li>• PCB Mount Alignment Type = None</li> <li>• Make First / Break Last = No</li> <li>• Industry Application = Networking (Communications)</li> <li>• UL File Number = E28476</li> </ul> <p><b>Electrical Characteristics:</b></p> <ul style="list-style-type: none"> <li>• Impedance (<math>\Omega</math>) = 100</li> <li>• Contact - Rated Current (A) = 0.75</li> <li>• Hot Pluggable = No</li> <li>• Operating Voltage Reference = AC/DC</li> <li>• Operating Voltage (VAC) = 120</li> <li>• Operating Voltage (VDC) = 120</li> </ul> <p><b>Termination Features:</b></p> <ul style="list-style-type: none"> <li>• Tail Length (mm [in]) = 1.2 [0.047]</li> <li>• Tail Orientation = In-line</li> </ul> <p><b>Dimensions:</b></p> <ul style="list-style-type: none"> <li>• Profile Height (Y-Axis) (mm [in]) = 17.30 [0.681]</li> </ul> <p><b>Body Features:</b></p> <ul style="list-style-type: none"> <li>• <a href="#">Number of Positions</a> = 90</li> <li>• <a href="#">Number of Rows</a> = 15</li> <li>• Number of Columns = 6</li> <li>• Number of Differential Pairs Per Column = 5</li> <li>• PCB Mount Retention Type = Compliant Tail</li> <li>• <a href="#">Centerline (mm [in])</a> = 1.90 [0.075]</li> <li>• Mating Retention = Without</li> <li>• Underplate Material Thickness (<math>\mu\text{m}</math> [<math>\mu\text{in}</math>]) = 1.27 [50.000]</li> <li>• Length (X-Axis) (mm [in]) = 11.40 [0.4488]</li> <li>• Width (Z-Axis) (mm [in]) = 28.20 [1.110]</li> </ul> <p><b>Contact Features:</b></p> <ul style="list-style-type: none"> <li>• Contact Design = Dual Beam</li> <li>• Contact Type = Socket</li> <li>• Contact Base Material = Copper-Nickel-Silicon</li> <li>• <a href="#">Contact Plating, Mating Area, Material</a> = Gold</li> <li>• Contact Plating, Mating Area, Thickness (<math>\mu\text{m}</math> [<math>\mu\text{in}</math>]) = 0.762 [30]</li> <li>• Tail Plating Material = Matte Tin</li> <li>• Tail Plating, Thickness (<math>\mu\text{m}</math> [<math>\mu\text{in}</math>]) = 1.27 [50]</li> <li>• Underplate Material = Nickel</li> </ul>	<p><b>Housing Features:</b></p> <ul style="list-style-type: none"> <li>• Connector Style = Receptacle</li> <li>• Housing Color = Black</li> <li>• Mating Alignment = With</li> <li>• Housing Material = Liquid Crystal Polymer (LCP)</li> <li>• UL Flammability Rating = UL 94V-0</li> </ul> <p><b>Configuration Features:</b></p> <ul style="list-style-type: none"> <li>• Connector Contact Configuration (No. of Pos./Type) = 60/Signal, 30/Ground</li> <li>• Differential Signaling = Yes</li> <li>• Guide Location = Unguided</li> </ul> <p><b>Industry Standards:</b></p> <ul style="list-style-type: none"> <li>• <a href="#">RoHS/ELV Compliance</a> = RoHS compliant, ELV compliant</li> <li>• <a href="#">Lead Free Solder Processes</a> = Not relevant for lead free process</li> <li>• RoHS/ELV Compliance History = Always was RoHS compliant</li> <li>• UL Rating = Recognized</li> <li>• CSA Certified = Yes</li> </ul> <p><b>Environmental:</b></p> <ul style="list-style-type: none"> <li>• Operating Temperature (<math>^{\circ}\text{C}</math> [<math>^{\circ}\text{F}</math>]) = -55 - +85 [-67 - +185]</li> </ul> <p><b>Conditions for Usage:</b></p> <ul style="list-style-type: none"> <li>• Applies To = Printed Circuit Board</li> <li>• Board-to-Board Configuration = Right Angle</li> </ul> <p><b>Operation/Application:</b></p> <ul style="list-style-type: none"> <li>• Application Use = Board-to-Board</li> <li>• Contact Transmits (Typical Application) = Signal (Data)</li> </ul> <p><b>Packaging Features:</b></p> <ul style="list-style-type: none"> <li>• Packaging Method = Tube</li> </ul> <p><b>Other:</b></p> <ul style="list-style-type: none"> <li>• Brand = Tyco Electronics</li> </ul>

#### Corporate Information

[Who We Are](#)  
[Investors](#)  
[News Room](#)  
[Supplier Portal](#)  
[Careers](#)

#### Quick Links

[Check Distributor Inventory](#)  
[Cross Reference](#)  
[Find Documents & Drawings](#)  
[Product Compliance Support Center](#)  
[Site Map](#)

#### Customer Support

[Email or Chat With Us](#)  
[Find a Phone Number](#)  
[Search Knowledge Base](#)  
[Manage your Account](#)

#### Keep Me Informed

Receive TE News, Events & Technology Updates

Enter your email address

