

THIS DRAWING IS UNPUBLISHED.

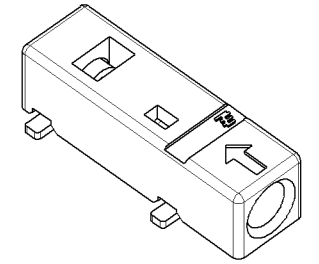
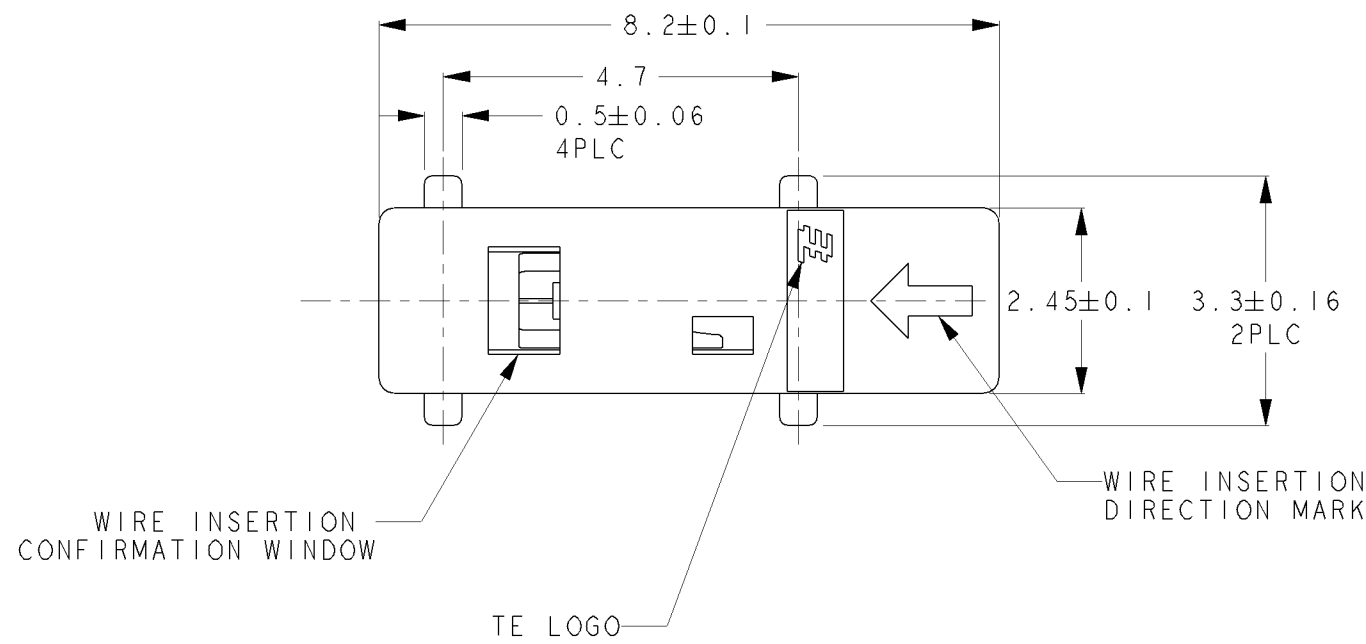
RELEASED FOR PUBLICATION

20

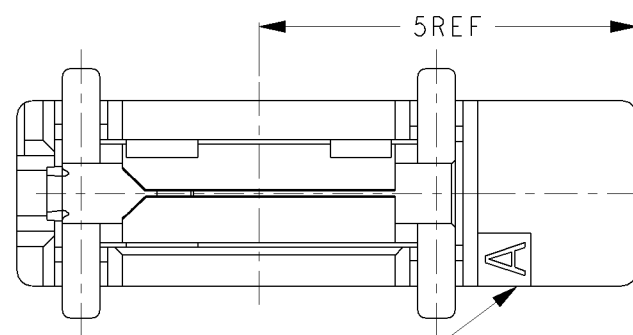
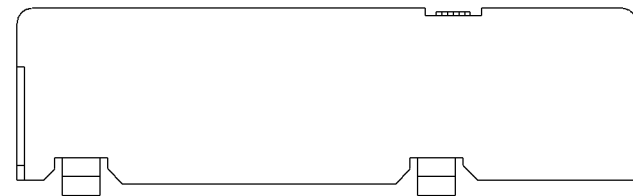
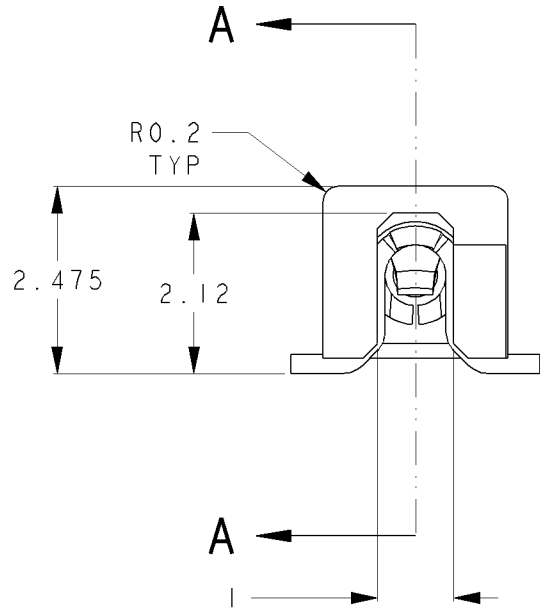
© COPYRIGHT 20 BY -

ALL RIGHTS RESERVED.

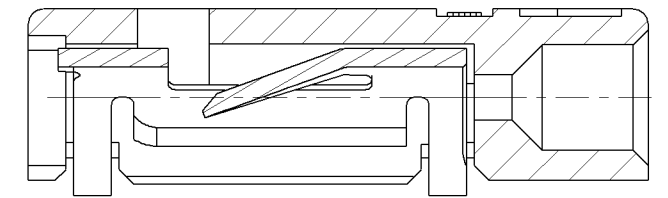
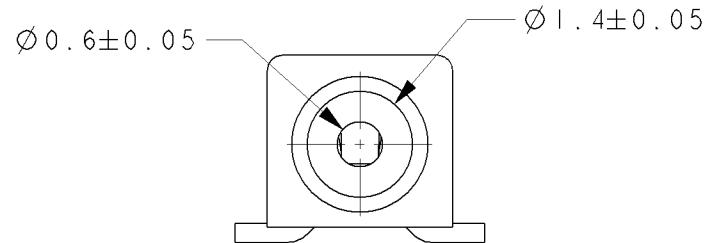
LOC	DIST	REVISIONS					
		P	LTR	DESCRIPTION	DATE	DWN	APVD
J	-		C	REVISED	11MAY2011	T.N	E.T



SCALE 5:1



CAVITY MARK



A - A

- ① 1. APPLICABLE WIRES: AWG#24 SOLID TIN COATING  
AWG#26 SOLID TIN COATING
- 2. ABOUT HSG VISUAL STANDARD : TO CONFORM TYCO ELECTRONICS JAPAN G.K. INTERNAL RULE.
- 3. MATERIAL  
-HOUSING : LCP UL94V-0,  
COLOR : NATURAL  
-CONTACT : COPPER ALLOY, Sn COATING
- 4. COPLANARITY : 0.1mmMAX(INITIAL).

② 5 REFERENTIAL VACUUM AREA: SEE FIG 4

③ 6 REFER FIG. 1 AS DATE CODE MARKING POSITION AND AREA. DATE CODE IS MARKED AT ONE SURFACE OR SEVERAL SURFACE.

THIS DRAWING IS A CONTROLLED DOCUMENT.

DIMENSIONS: mm	TOLERANCES UNLESS OTHERWISE SPECIFIED: ±0.2
	0-PLC ±
	1-PLC ±
	2-PLC ±
	3-PLC ±
	4-PLC ±
	ANGLES ±3°
MATERIAL	FINISH

DWN	16 JUL 2010
T. NAGASAKI	
CHK	16 JUL 2010
E. TAKEMASA	
APVD	16 JUL 2010
E. TAKEMASA	
PRODUCT SPEC	108-78810
APPLICATION SPEC	114-5482
WEIGHT	0.0827g
CUSTOMER DRAWING	

**TE** TE Connectivity

NAME: MICRO POKE IN IP ASSEMBLY

NOT THE LATEST REVISION

SIZE	CAGE CODE	DRAWING NO	RESTRICTED TO
A	300779	C-2134611	-

SCALE 10:1 SHEET 1 OF 3 REV C

LOC	DIST	REVISIONS					
		P	LTR	DESCRIPTION	DATE	DWN	APVD
J	-		-	SEE SHEET 1	-	-	-

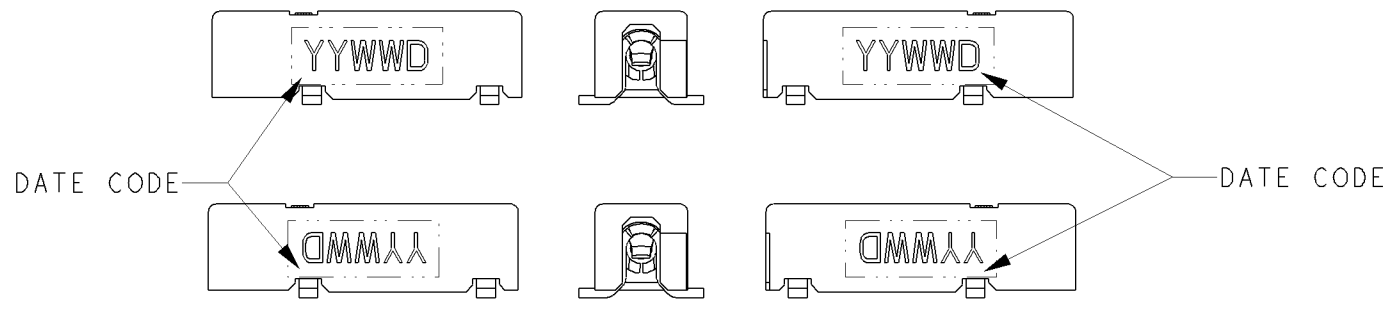


FIG. 1 DATE CODE MARKING POSITION AND AREA

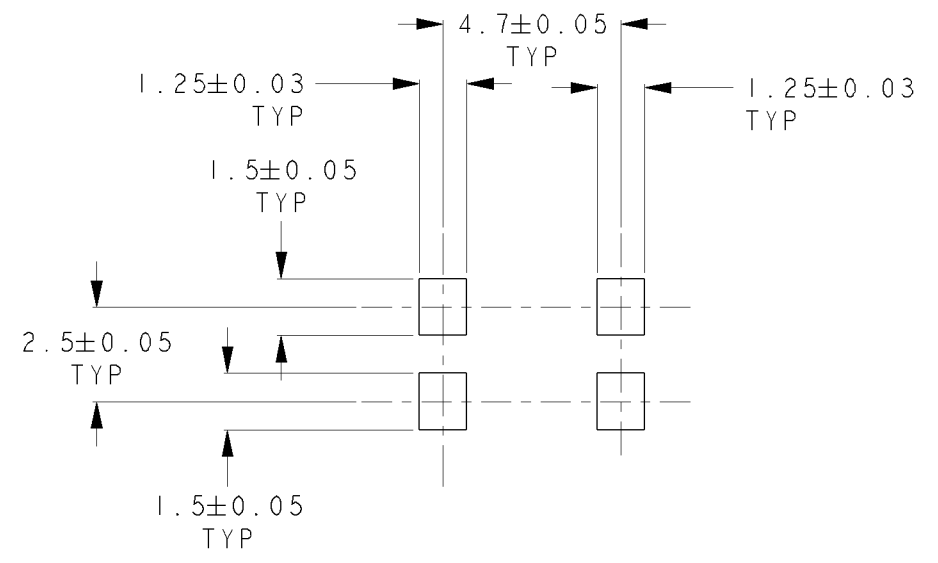


FIG. 2 REFERENTIAL P.C.B LAYOUT

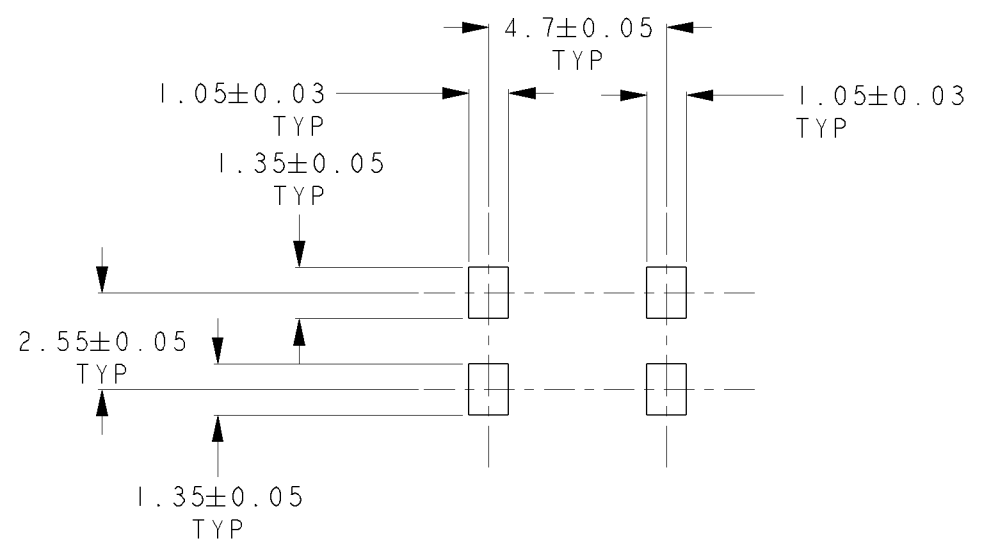


FIG. 3 REFERENTIAL METAL MASK PAD OPENING  
 REFERENTIAL METAL MASK THICKNESS IS 0.15mm

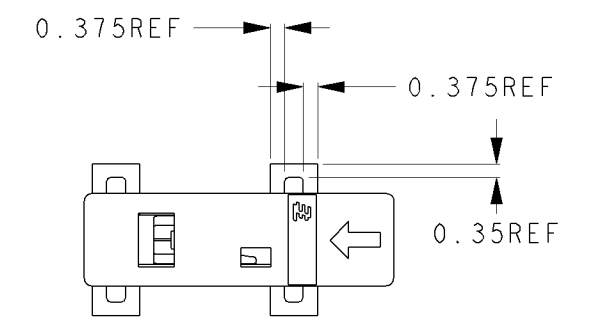


FIG. 5 REFERENTIAL CONNECTOR PLACEMENT

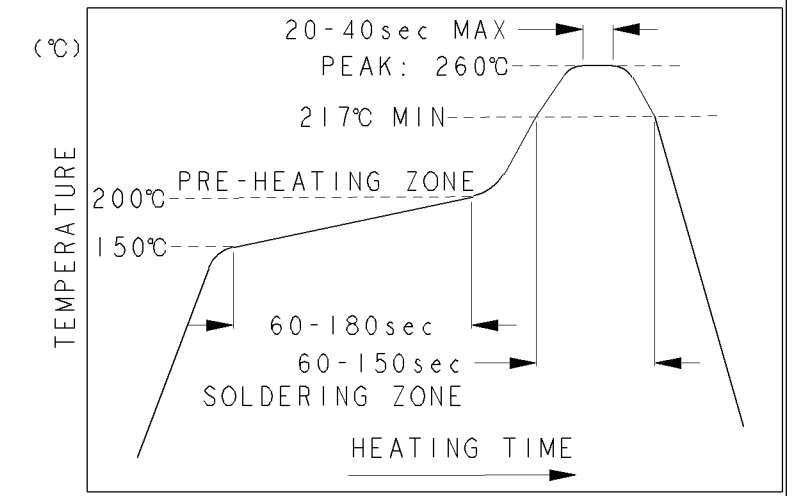


FIG. 6 REFERENTIAL REFLOW TEMPERATURE PROFILE  
 (BASED ON IPC/JEDEC J-STD-020C)

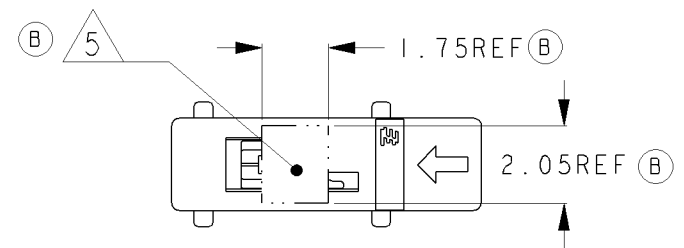


FIG. 4 REFERENTIAL VACUUM AREA

THIS DRAWING IS A CONTROLLED DOCUMENT.		DWN		TE Connectivity	
DIMENSIONS: mm		CHK			
TOLERANCES UNLESS OTHERWISE SPECIFIED: ±0.2		APVD		NAME	
0-PLC ±		PRODUCT SPEC		MICRO POKE IN IP ASSEMBLY	
1-PLC ±		APPLICATION SPEC		-	
2-PLC ±		WEIGHT		SIZE	CAGE CODE
3-PLC ±		CUSTOMER DRAWING		A300779	C-2134611
4-PLC ±		SCALE		5:1	SHEET 2 OF 3
ANGLES ±3°		REV		C	
FINISH		RESTRICTED TO		-	

4

3

2

1

THIS DRAWING IS UNPUBLISHED.

RELEASED FOR PUBLICATION

ALL RIGHTS RESERVED.

© COPYRIGHT - By -

LOC

DIST

REVISIONS

P

LTR

DESCRIPTION

DATE

DWN

APVD

DIRECTION OFF TOP OF REEL

Diagram showing the reel configuration with dimensions: 2, 8, 4, 1.75, 4.22, 8.44, 22.25, 24. The drawing includes a top view of the reel with a direction arrow pointing right, and a side view of the connectors showing their internal structure and dimensions.

Diagram showing a cross-section B-B of the connector with dimensions: 0.65, 3.28, 2.75.

(APPLIED TO SHEET 3)

1. THE DIRECTION OF EACH CONNECTOR ON AN EMBOSS IS REFERRED TO THIS DRAWING.

2. REEL CONFIGURATION AND DIMENSIONS PER EIA 481-D

Diagram showing the reel diameter and flange core diameter. Dimensions include: (ø100) FLANGE CORE DIAMETER, (ø330) REEL DIAMETER, 160mm APPROX' WITHOUT CHARGE, 160mm APPROX' WITH PRODUCT CHARGE, 400mm APPROX' WITHOUT CHARGE, 160mm APPROX' WITHOUT CHARGE, 400mm APPROX' WITHOUT CHARGE, 160mm APPROX' WITHOUT CHARGE, 400mm APPROX' WITHOUT CHARGE, 160mm APPROX' WITHOUT CHARGE, 400mm APPROX' WITHOUT CHARGE. Text: WEEDING THE COVER TAPE AROUND THE OUTER PERIPHERY IN A TURN. PEELING ANGLE: 165°-180°.

THIS DRAWING IS A CONTROLLED DOCUMENT.

DWN 11MAY2011

CHK

APVD

PRODUCT SPEC

APPLICATION SPEC

WEIGHT

CUSTOMER DRAWING

NAME: MICRO POKE IN 1P ASSEMBLY

SIZE: A3 CAGE CODE: 00779 DRAWING NO: C=2134611 RESTRICTED TO: -

SCALE: NTS SHEET: 3 OF 3 REV: C

DIMENSIONS:

mm

TOLERANCES UNLESS OTHERWISE SPECIFIED:

0 PLC ± 0.5  
 1 PLC ± 0.5  
 2 PLC ± 0.5  
 3 PLC ± 0.5  
 4 PLC ± 0.5  
 ANGLES ± 30'

MATERIAL

FINISH

1470-19 (3/11)