

THIS DRAWING IS UNPUBLISHED.

RELEASED FOR PUBLICATION

20

LOC J

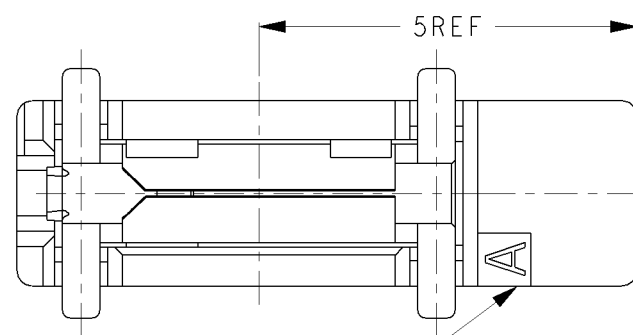
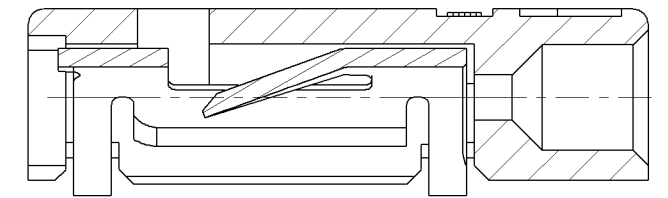
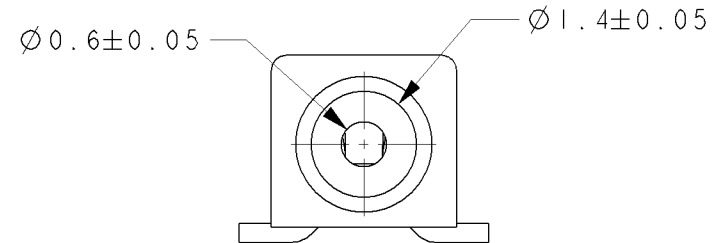
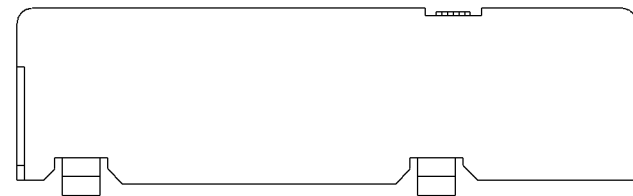
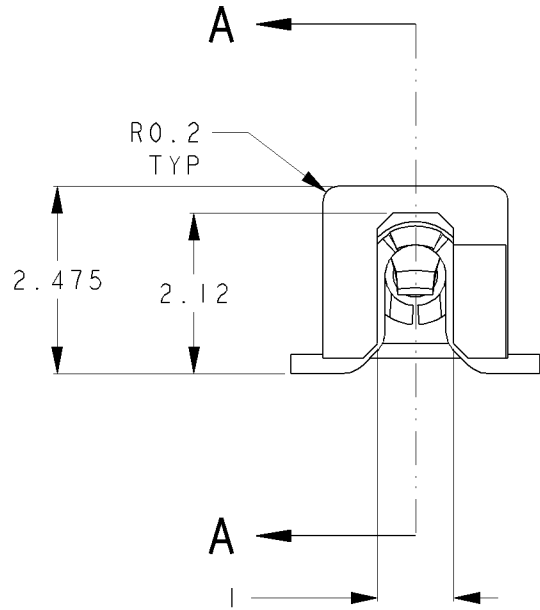
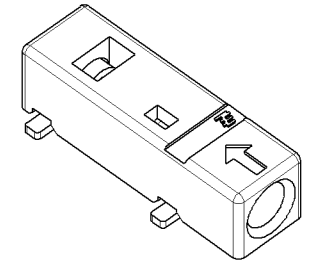
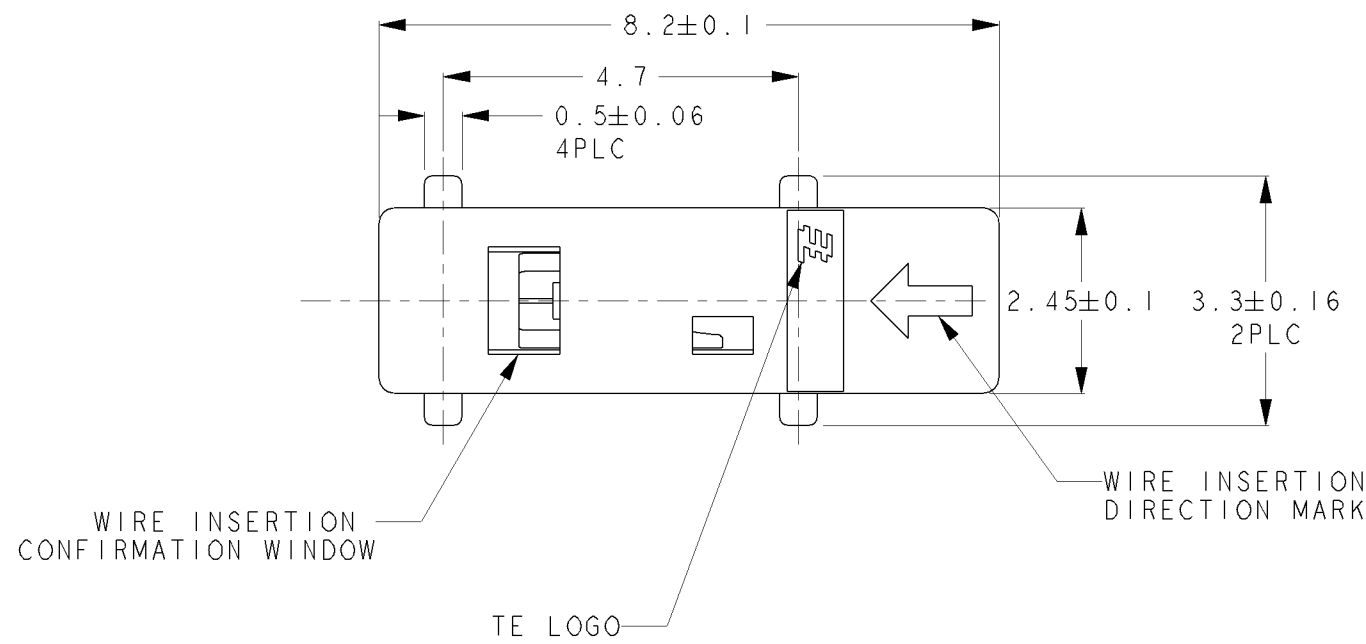
DIST -

REVISIONS

© COPYRIGHT 20 BY -

ALL RIGHTS RESERVED.

P	LTR	DESCRIPTION	DATE	DWN	APVD
	C	REVISED	11MAY2011	T.N	E.T



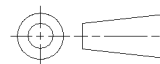
- ① 1. APPLICABLE WIRES: AWG#24 SOLID TIN COATING
AWG#26 SOLID TIN COATING
- 2. ABOUT HSG VISUAL STANDARD : TO CONFORM TYCO ELECTRONICS JAPAN G.K. INTERNAL RULE.
- 3. MATERIAL
-HOUSING : LCP UL94V-0,
COLOR : NATURAL
-CONTACT : COPPER ALLOY, Sn COATING
- 4. COPLANARITY : 0.1mmMAX(INITIAL).

② 5 REFERENTIAL VACUUM AREA: SEE FIG 4

③ 6 REFER FIG. 1 AS DATE CODE MARKING POSITION AND AREA.
DATE CODE IS MARKED AT ONE SURFACE OR SEVERAL SURFACE.

THIS DRAWING IS A CONTROLLED DOCUMENT.

DIMENSIONS:
mm



TOLERANCES UNLESS OTHERWISE SPECIFIED:
± 0.2

0-PLC	±
1-PLC	±
2-PLC	±
3-PLC	±
4-PLC	±
ANGLES	±3°

MATERIAL

FINISH

DWN 16 JUL 2010

T. NAGASAKI

CHK 16 JUL 2010

E. TAKEMASA

APVD 16 JUL 2010

E. TAKEMASA

PRODUCT SPEC

108-78810

APPLICATION SPEC

114-5482

WEIGHT 0.0827g



TE Connectivity

NAME

MICRO POKE IN IP ASSEMBLY

SIZE

CAGE CODE

DRAWING NO

RESTRICTED TO

A 300779

C-2134611

CUSTOMER DRAWING

SCALE 10:1

SHEET 1 OF 3

REV C

LOC	DIST	REVISIONS					
		P	LTR	DESCRIPTION	DATE	DWN	APVD
J	-		-	SEE SHEET 1	-	-	-

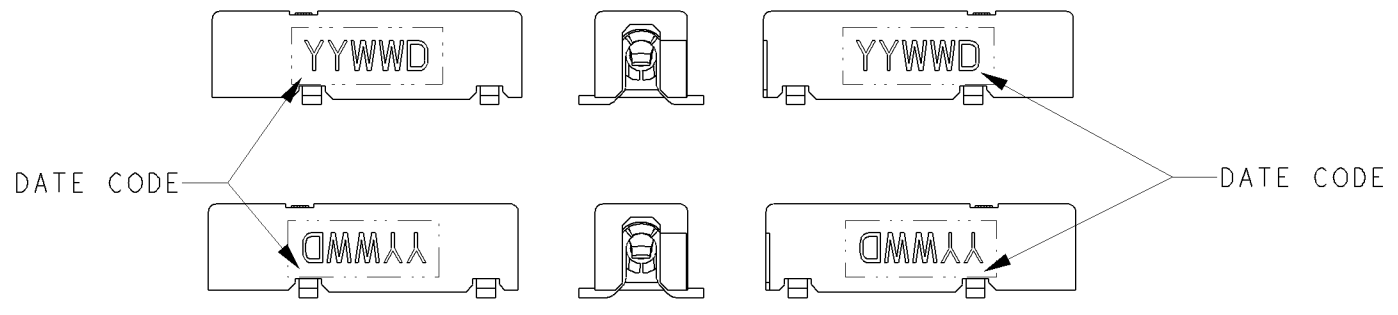


FIG. 1 DATE CODE MARKING POSITION AND AREA

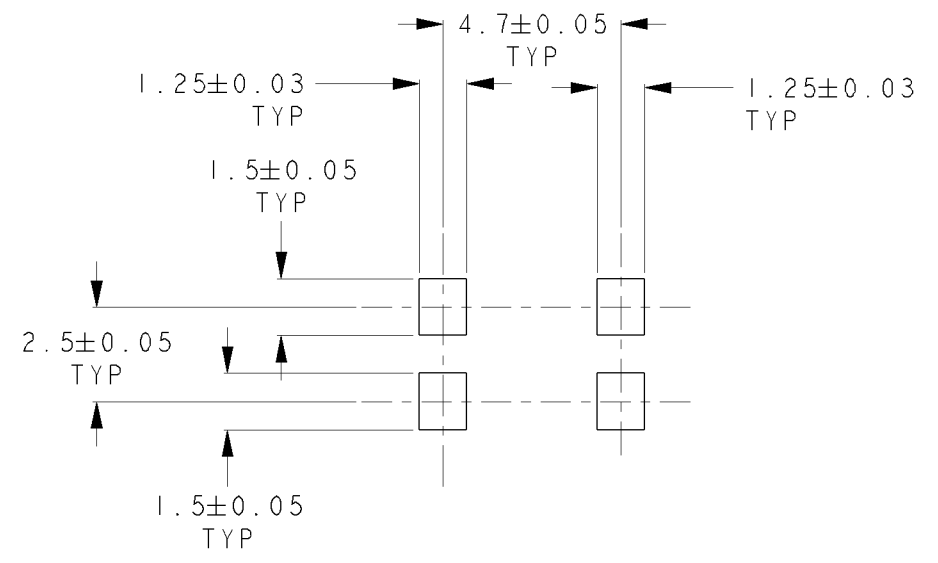


FIG. 2 REFERENTIAL P.C.B LAYOUT

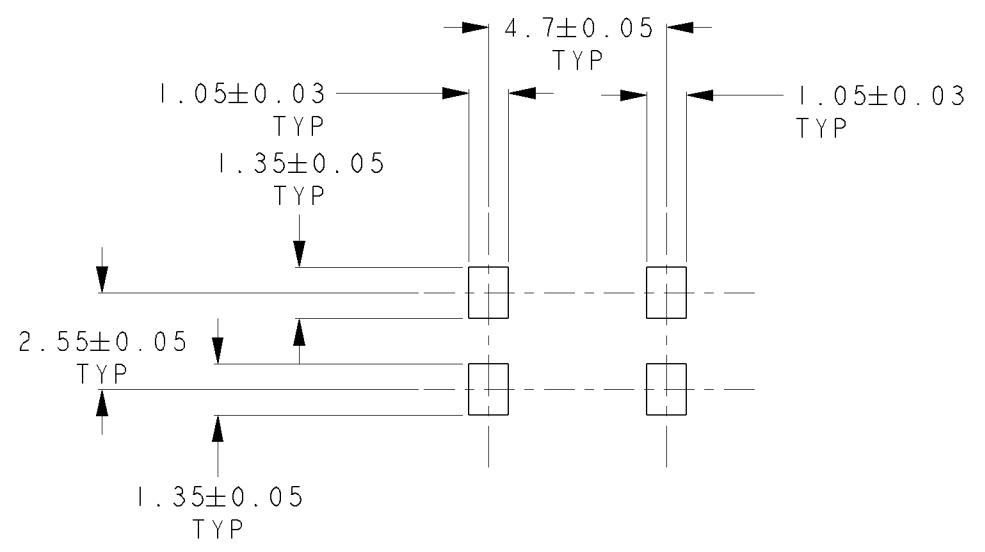


FIG. 3 REFERENTIAL METAL MASK PAD OPENING
 REFERENTIAL METAL MASK THICKNESS IS 0.15mm

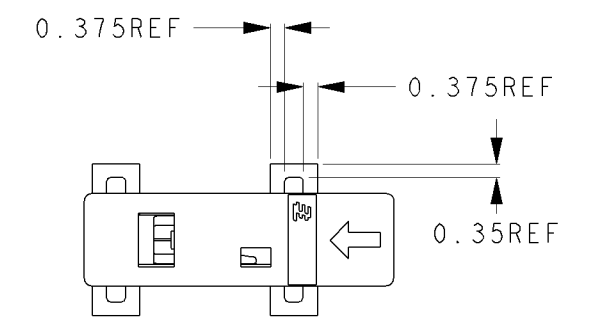


FIG. 5 REFERENTIAL CONNECTOR PLACEMENT

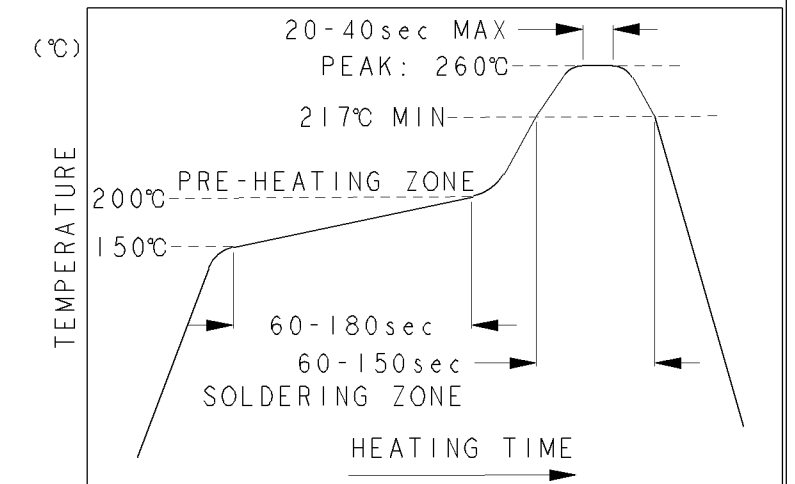


FIG. 6 REFERENTIAL REFLOW TEMPERATURE PROFILE
 (BASED ON IPC/JEDEC J-STD-020C)

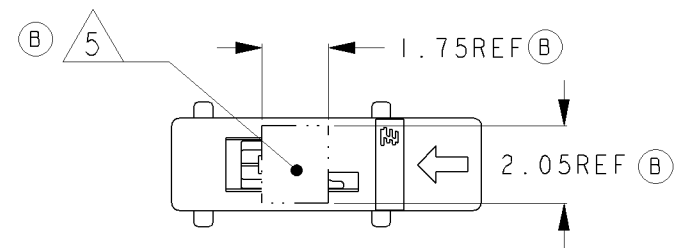


FIG. 4 REFERENTIAL VACUUM AREA

THIS DRAWING IS A CONTROLLED DOCUMENT.		DWN	TE Connectivity		
		CHK			
DIMENSIONS: mm		APVD	NAME		
TOLERANCES UNLESS OTHERWISE SPECIFIED: ± 0.2		PRODUCT SPEC	MICRO POKE IN IP ASSEMBLY		
0-PLC ± 1-PLC ± 2-PLC ± 3-PLC ± 4-PLC ± ANGLES ±3°		APPLICATION SPEC	SIZE	CAGE CODE	DRAWING NO
MATERIAL		WEIGHT	A300779	C-2134611	RESTRICTED TO
		CUSTOMER DRAWING	SCALE	SHEET	REV
			5:1	2 OF 3	C

4

3

2

1

THIS DRAWING IS UNPUBLISHED.

RELEASED FOR PUBLICATION

ALL RIGHTS RESERVED.

© COPYRIGHT - By -

LOC

DIST

REVISIONS

P	LTR	DESCRIPTION	DATE	DWN	APVD
-	-	-	-	-	-

DIRECTION OFF TOP OF REEL

Dimensions shown in the main drawing:

- Horizontal dimensions: 2, 8, 4
- Vertical dimensions: 1.75, 4.22, 8.44, 22.25, 24

Dimensions for cross-section B-B:

- 3.28
- 0.65
- 2.75

(APPLIED TO SHEET 3)

1. THE DIRECTION OF EACH CONNECTOR ON AN EMBOSS IS REFERRED TO THIS DRAWING.

2. REEL CONFIGURATION AND DIMENSIONS PER EIA 481-D

Reel layout dimensions and instructions:

- FLANGE CORE DIAMETER: $\phi 100$
- REEL DIAMETER: $\phi 330$
- REEL WIDE: (30.4)
- WITHOUT CHARGE: 160mm APPROX
- WITH PRODUCT CHARGE: 400mm APPROX
- WITHOUT CHARGE: 160mm APPROX
- PEELING ANGLE: $165^\circ \sim 180^\circ$
- WEEDING THE COVER TAPE AROUND THE OUTER PERIPHERY IN A TURN.

THIS DRAWING IS A CONTROLLED DOCUMENT.

DIMENSIONS:
mm

TOLERANCES UNLESS OTHERWISE SPECIFIED:

0 PLC	± 0.5
1 PLC	± 0.5
2 PLC	± 0.5
3 PLC	± 0.5
4 PLC	± 0.5
ANGLES	$\pm 30'$

MATERIAL

FINISH

DWN

CHK

APVD

PRODUCT SPEC

APPLICATION SPEC

WEIGHT

CUSTOMER DRAWING

11MAY2011

NAME

MICRO POKE IN 1P
ASSEMBLY

SIZE

CAGE CODE

DRAWING NO

RESTRICTED TO

A3

00779

C=2134611

SCALE NTS

SHEET 3 OF 3

REV C

1470-19 (3/11)