

THIS DRAWING IS UNPUBLISHED. RELEASED FOR PUBLICATION
 © COPYRIGHT BY TYCO ELECTRONICS CORPORATION. ALL INTERNATIONAL RIGHTS RESERVED.

LOC	DIST	REVISIONS			
P	LTR	DESCRIPTION	DATE	DWN	APVD
FT	0	B	REVISED PER ECO-08-029128	22NOV08	HMR MS
		B1	REVISED PER ECO-09-020689	27AUG09	KK AEG

#5-20 SELF TAPPING SCREW
 QTY=2

$15.75^{+0.00}_{-1.27}$
 $.620^{+.000}_{-.050}$

△2 CABLE CLAMP INSERT

CABLE CLAMP BODY

CABLE SUPPLIED BY CUSTOMER △3

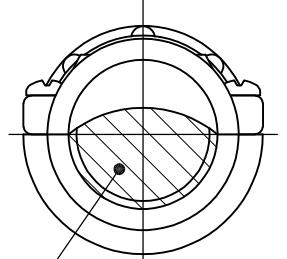
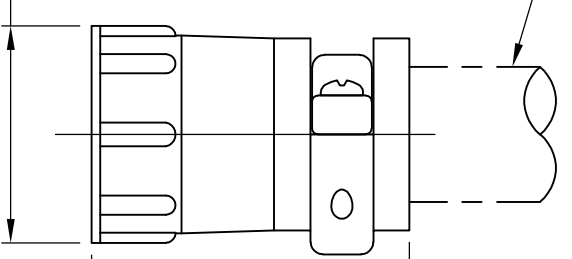
CLAMPING AREA △2

- △1 CABLE CLAMP BODY AND INSERTS: NYLON, BLACK. SCREWS: CARBON STEEL.
- △2 CABLE CLAMPING AREA ADJUSTABLE FROM 2.54 [.100] TO 10.41 [.410] SQ AREA BY REVERSING OR CHANGING CLAMPING INSERTS.
- △3 17.86 [.703] MAXIMUM CABLE OUTSIDE DIAMETER.
- △4 SCREWS: ZINC W/ TRIVALENT CHROMATE.
- △5 OBSOLETE PARTS: OBSOLETE CIS STREAMLINING PER D.RENAUD/D.SINISI

△5 OBSOLETE	△4	PACKAGING	PART NUMBER
	△4	BULK	213902-4
	△4	INDIVIDUAL	213902-3
	△4	BULK	213902-2
	△4	INDIVIDUAL	213902-1

28.73 ± 0.64
 $[1.131 \pm .025]$

42.04 ± 0.76
 $[1.655 \pm .030]$



ASSEMBLED VIEW

THIS DRAWING IS A CONTROLLED DOCUMENT.		DWN D.HARDY 07/12/95	Tyco Electronics Corporation Harrisburg, PA 17105-3608	
DIMENSIONS: mm [INCHES]		CHK R.STONE 07/13/95	NAME CABLE CLAMP KIT, LARGE, UNASSEMBLED, SIZE 17, CPC	
TOLERANCES UNLESS OTHERWISE SPECIFIED:		APVD A.FRANTUM 07/13/95	PRODUCT SPEC 108-1579	
0 PLC ± -		APPLICATION SPEC		
1 PLC ± -		SIZE A3		
2 PLC ± -		CAGE CODE 00779		
3 PLC ± -		DRAWING NO C-213902		
4 PLC ± -		RESTRICTED TO		
ANGLES ± -		SCALE NTS		
FINISH		SHEET 1 OF 1		
MATERIAL △1		REV B1		
		CUSTOMER DRAWING		

Mouser Electronics

Authorized Distributor

Click to View Pricing, Inventory, Delivery & Lifecycle Information:

[TE Connectivity:](#)

[213902-1](#)