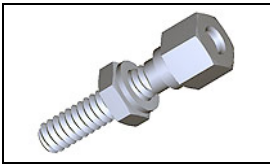


## 2-1437012-4 Product Details

[Share](#) [Print](#) [Email](#)



**2-1437012-4**

TE Internal Number: 2-1437012-4  
 Active

[View 3D PDF](#)

### Hardware (AMPLIMITE)

Always EU RoHS/ELV Compliant (Statement of Compliance)

#### Product Highlights:

- Accessory Type = Female Screwlock Assembly Kit, Jack Socket Assembly
- Passivated Body Finish
- Thread Size = 4-40
- Thread Length = 12.70 mm
- Screw Length = 12.70 mm

[View all Features](#)

### Quick Links

- ▶ [Pricing & Availability](#)
- ▶ [Search for Tooling](#)
- ▶ [Product Feature Selector](#)
- ▶ [Contact Us About This Product](#)

[Add to My Part List](#) [Request Sample](#) [Find Similar Products](#) [Buy Product](#)

### Documentation & Additional Information

#### Product Drawings:

- [D CONNECTOR MOUNTING ACCESSORY HARDWARE.](#) (PDF, English)

#### Catalog Pages/Data Sheets:

- None Available

#### Product Specifications:

- None Available

#### Application Specifications:

- None Available

#### Instruction Sheets:

- [Jack Socket Assembly](#) (PDF, English)

#### CAD Files: (CAD Format & Compression Information)

- [2D Drawing](#) (DXF, Version H)
- [3D Model](#) (IGES, Version H)
- [3D Model](#) (STEP, Version H)

#### Additional Information:

- [Product Line Information](#)

#### Related Products:

- [Tooling](#)

[List all Documents](#)

### Product Features (Please use the Product Drawing for all design activity)

#### Product Type Features:

- Accessory Type = Female Screwlock Assembly Kit, Jack Socket Assembly
- Thread Size = 4-40

#### Dimensions:

- Screw Length (mm [in]) = 12.70 [0.500]
- Panel Thickness (mm [in]) = 1.57 [0.062]

#### Body Features:

- Body Finish = Passivated
- Thread Length (mm [in]) = 12.70 [0.500]
- Screwlock Style = Screwlock With Lockwasher and Hex Nut
- Screw Finish = Passivated
- Screw Material = Stainless Steel
- Mating Thread Size = 4-40 Screw

#### Industry Standards:

- Government/Industry Qualification = No
- RoHS/ELV Compliance = RoHS compliant, ELV compliant
- Lead Free Solder Processes = Not relevant for lead free process
- RoHS/ELV Compliance History = Always was RoHS compliant

#### Conditions for Usage:

- For Use With = Metal Shell or All Plastic Connectors (HDP or HDF)

#### Packaging Features:

- Packaging Method = Loose Piece/Bulk
- Packaging Quantity = 50

#### Other:

- Brand = AMP
- Comment = All parts are packaged unassembled.; For Rear Panel Mount.; Each female screwlock kit is comprised of two assemblies.; One or two flat washers may be required for panel thicknesses less than 1.52 [.060]. Female screwlocks are not recommended for panel thicknesses greater than 1.52 [.060].

### Corporate Information

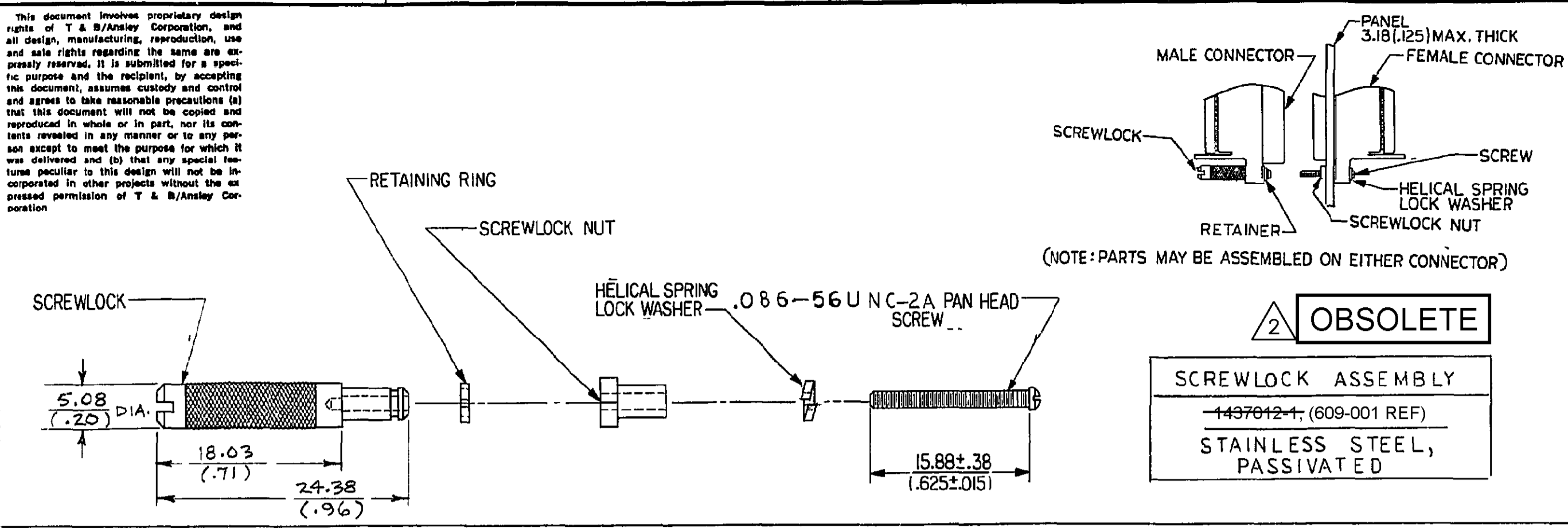
[About TE](#)  
[Investors](#)  
[News Room](#)  
[Supplier Portal](#)

### Quick Links

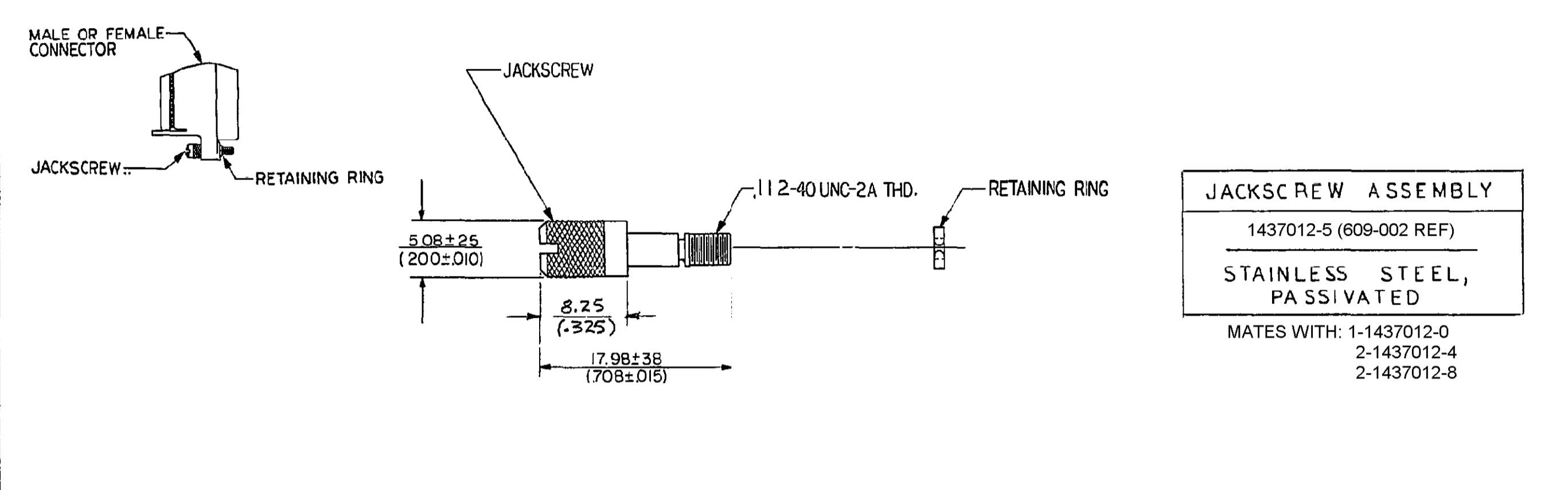
[Distributor Inventory](#)  
[Product Cross Reference](#)  
[Documents & Drawings](#)  
[Product Compliance Support Center](#)

### Customer Support

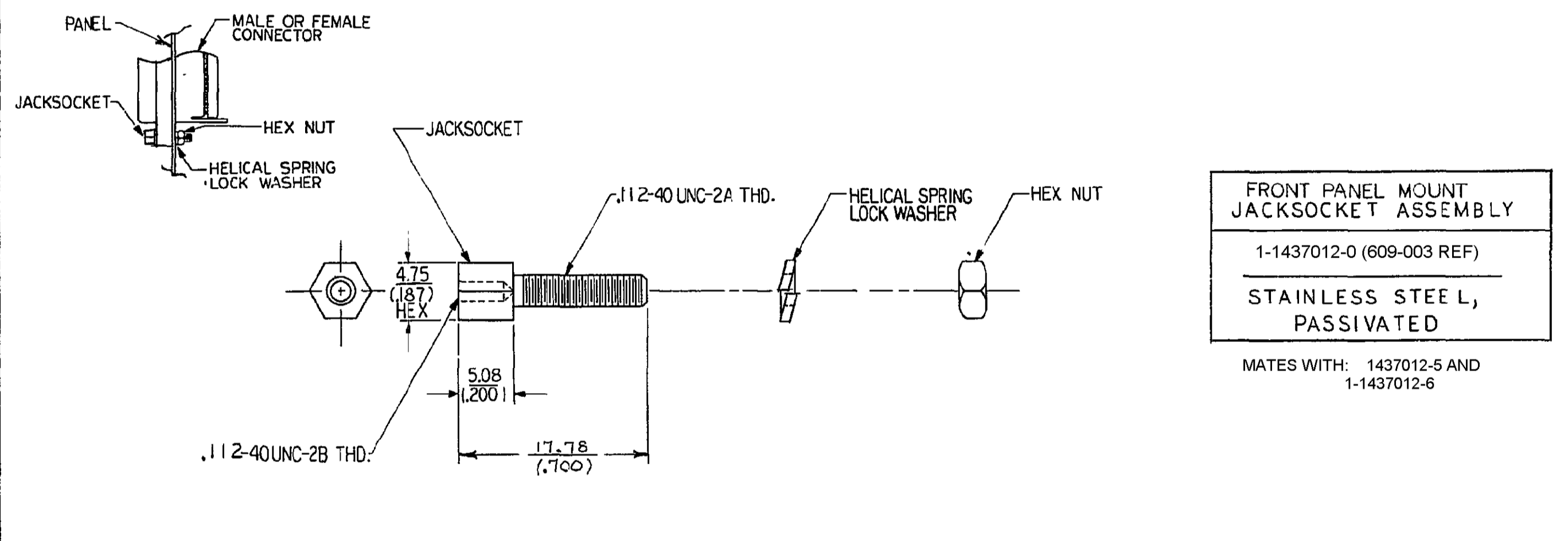
[Email or Chat With Us](#)  
[Find a Phone Number](#)  
[Knowledge Base](#)  
[Manage Your Account](#)



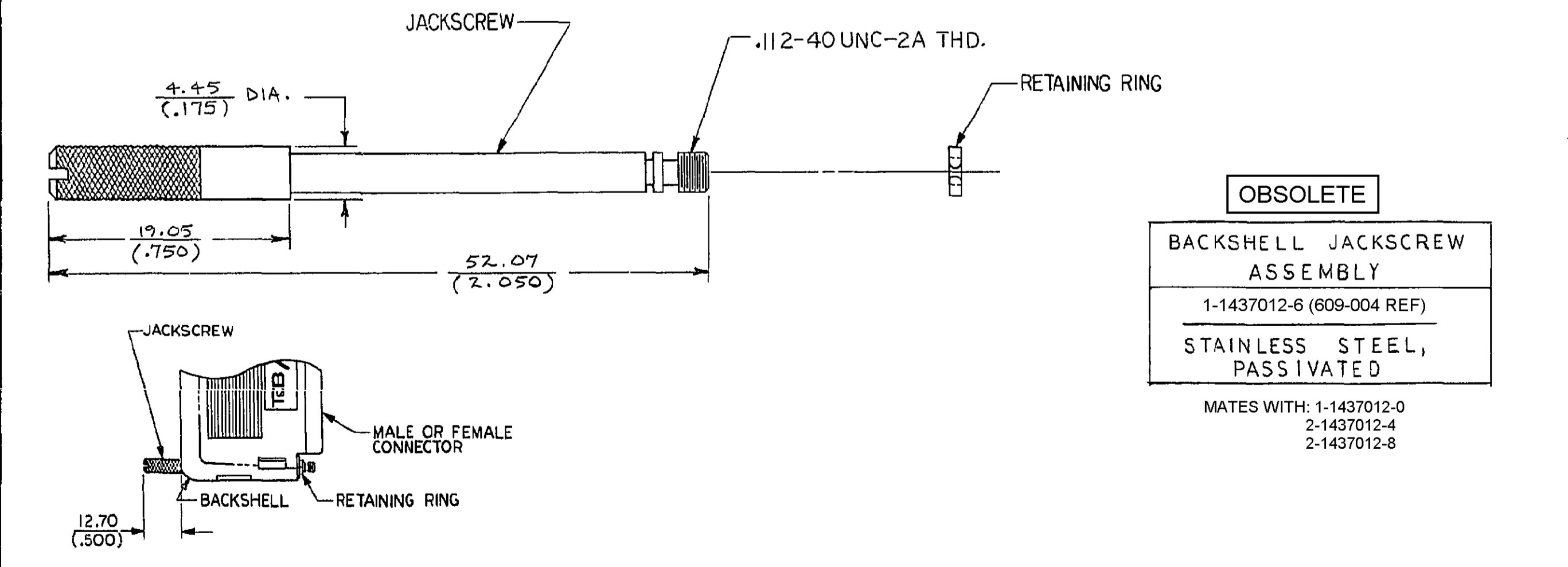
**2 OBSOLETE**  
**SCREWLOCK ASSEMBLY**  
 1-1437012-1 (609-001 REF)  
 STAINLESS STEEL,  
 PASSIVATED



**JACKSCREW ASSEMBLY**  
 1437012-5 (609-002 REF)  
 STAINLESS STEEL,  
 PASSIVATED  
 MATES WITH: 1-1437012-0  
 2-1437012-4  
 2-1437012-8

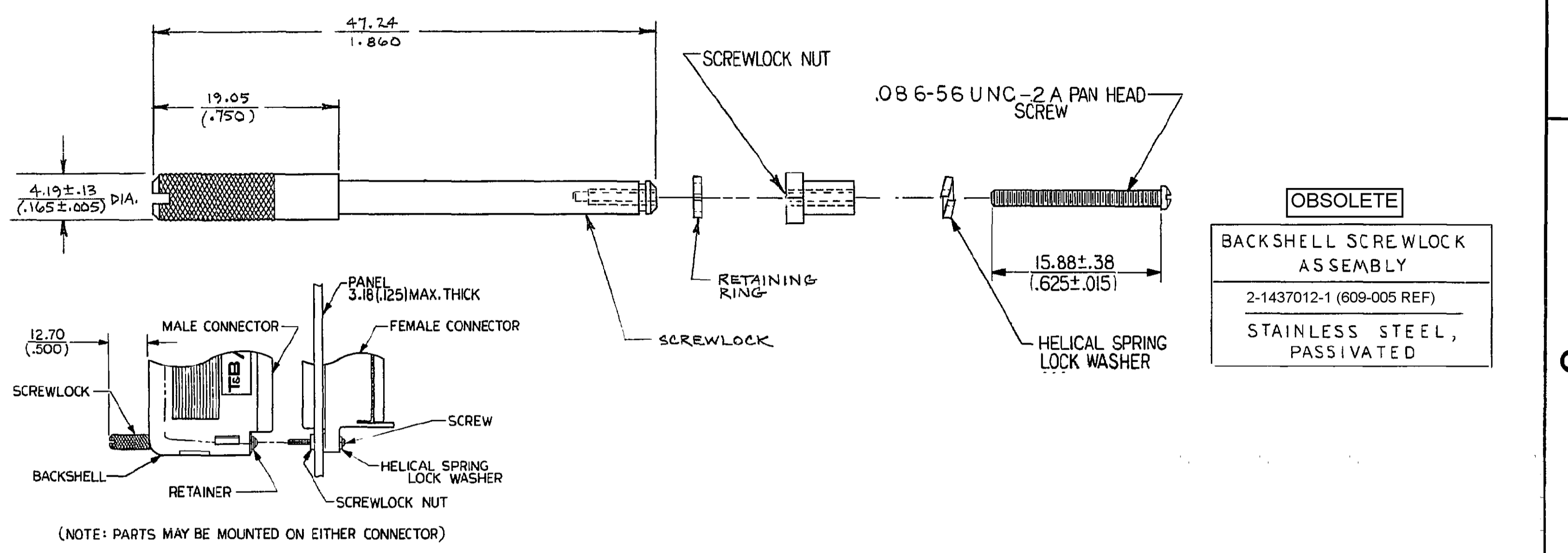


**FRONT PANEL MOUNT JACKSCREW ASSEMBLY**  
 1-1437012-0 (609-003 REF)  
 STAINLESS STEEL,  
 PASSIVATED  
 MATES WITH: 1437012-5 AND  
 1-1437012-6

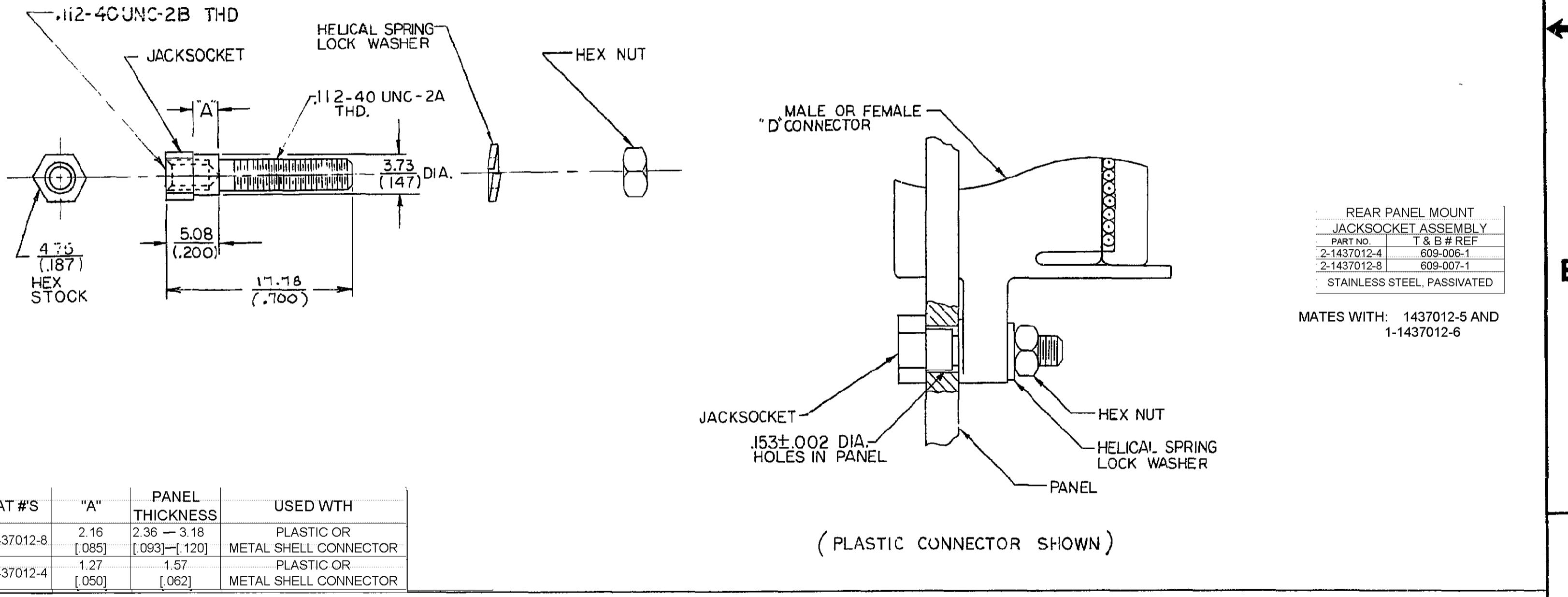


**OBSOLETE**  
**BACKSHELL JACKSCREW ASSEMBLY**  
 1-1437012-6 (609-004 REF)  
 STAINLESS STEEL,  
 PASSIVATED  
 MATES WITH: 1-1437012-0  
 2-1437012-4  
 2-1437012-8

1. HARDWARE SHOWN IS COMPATIBLE WITH FORMER T&B BACKSHELLS AND CONNECTORS ONLY.  
 2. OBSOLETE PARTS: OBSOLETE CIS STREAMLINING PER D.RENAUD/D.SINISI



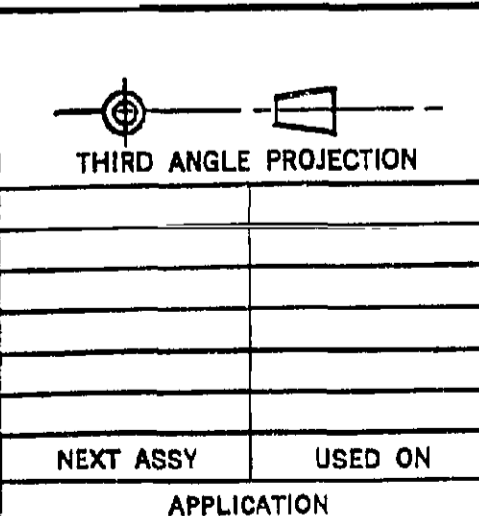
**OBSOLETE**  
**BACKSHELL SCREWLOCK ASSEMBLY**  
 2-1437012-1 (609-005 REF)  
 STAINLESS STEEL,  
 PASSIVATED



**REAR PANEL MOUNT JACKSCREW ASSEMBLY**  
 PART NO. T & B REF  
 2-1437012-4 609-006-1  
 2-1437012-8 609-007-1  
 STAINLESS STEEL, PASSIVATED  
 MATES WITH: 1437012-5 AND  
 1-1437012-6

CAT #S	"A"	PANEL THICKNESS	USED WITH
2-1437012-8	2.16 (.085)	2.36 - 3.18 [.093] - [1.20]	PLASTIC OR METAL SHELL CONNECTOR
2-1437012-4	1.27 (.050)	1.57 [.062]	PLASTIC OR METAL SHELL CONNECTOR

P	REVISED PER ECO-11-004835	21MAR11	RK	HMR
REV	REVISION RECORD	DATE	DWN	APVD



UNLESS OTHERWISE SPECIFIED, DIMENSIONS ARE IN M.MS.(INCHES)  
 TOLERANCES —  
 FRACTIONS =  
 ANGLES =  
 DECIMALS .XX (.XXX) ±  
 X (.XX) ±

FIND NO.	QTY REQD	CODE IDENT	PART NO.	DESCRIPTION	ZONE
LIST OF MATERIALS					
DRAWN					
CHECKED					
APPROVED					
APPROVED					
APPROVED					

**STE** TE Connectivity

TITLE  
**D CONNECTOR MOUNTING ACCESSORY HARDWARE**

SIZE	CODE IDENT NO.	NUMBER	REV.
D	15912	1437012-1	P

SCALE: N T S Customer Drawing SHEET OF