



## Introducing Corcom High Performance P Series with Vertical Mounting Option

The Corcom P series power entry modules offer a range of options in a compact size. The high performance filtered versions of this product are now available in a vertical mounting tab style. This new mounting style helps reduce the panel footprint permitting installation in 1U height (1.75") rack mount equipment and other applications with limited panel space.

### KEY FEATURES

- New vertical mounting style (PM)
- 6 & 10A current ratings
- High performance EMI/RFI filtering
- Standard or medical filter option
- Rated at 250 VAC
- UL Recognized, CSA Certified, and VDE Approved
- 1.23" width fits 1U height enclosure
- Horizontal mounting (PE) also available

### APPLICATIONS

- Healthcare equipment
- High performance motor controller
- Linear and switch mode power supplies
- Test equipment
- Laboratory equipment

### STANDARDS AND SPECIFICATIONS



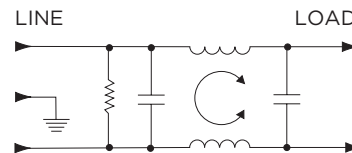
- UL Recognized
- CSA Certified
- VDE Approved

### ELECTRICAL SPECIFICATIONS

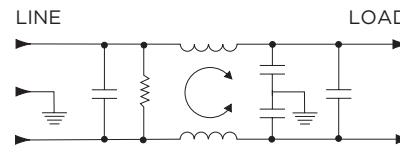
Hipot rating (one minute):	Line to Ground:	2250 VDC
	Line to Line:	1450 VDC
Rated Voltage (max):		250 VAC
Operating Frequency:		50/60 Hz
Rated Current:		6A or 10A
Optional Switch:		51A inrush capable DPST
Fuseholder:		Accepts one or two fuses .25 x 1.25" (not included) or 5 x 20mm (not included)

### ELECTRICAL SCHEMATICS

#### L Models



#### Z Models

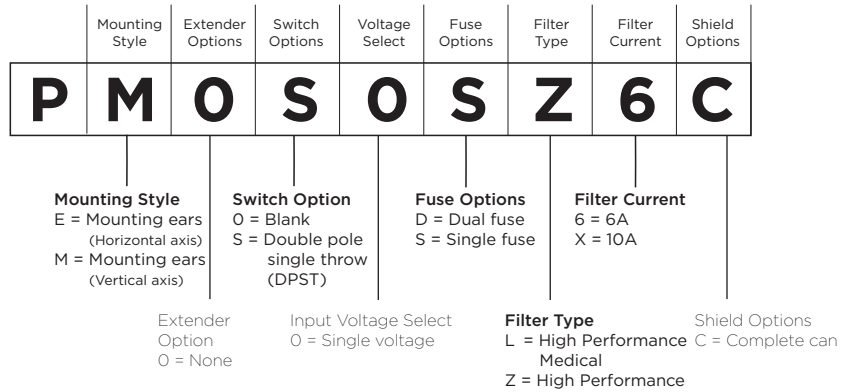


PRODUCT OFFERING AND ORDERING INFORMATION

1-1609109-9:	PM000DL6C
2-1609109-0:	PM000SL6C
2-1609109-1:	PM0SODL6C
2-1609109-2:	PM0SOSL6C
2-1609109-3:	PM000DLXC
2-1609109-4:	PM000SLXC
2-1609109-5:	PM0SODLXC
2-1609109-6:	PM0SOSLXC
2-1609109-7:	PM000DZ6C
2-1609109-8:	PM000SZ6C
2-1609109-9:	PM0SODZ6C
3-1609109-0:	PM0SOSZ6C
3-1609109-1:	PM000DZXC
3-1609109-2:	PM000SZXC
3-1609109-3:	PM0SODZXC
3-1609109-4:	PM0SOSZXC

Part numbers are constructed by selecting the alphanumeric character which represents the desired feature.

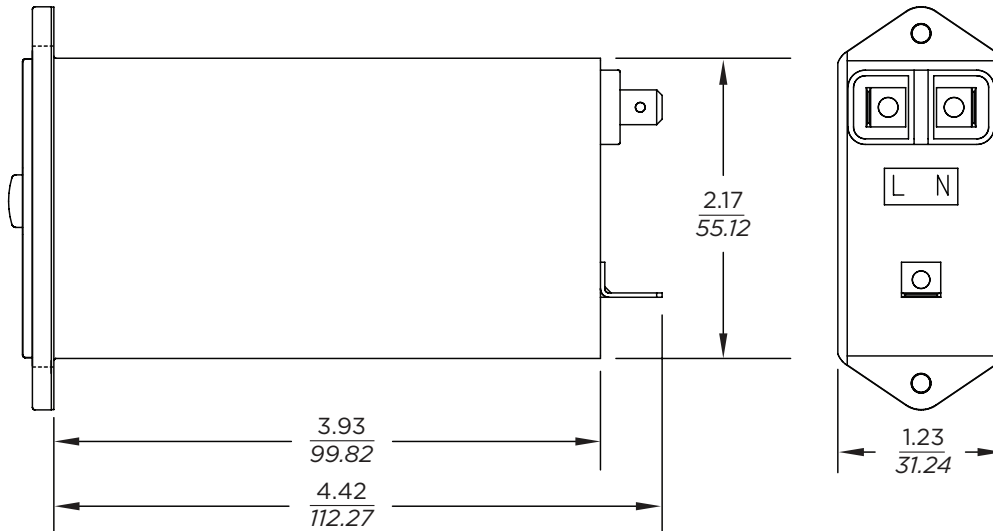
**NOTE: for any option where shown as "0" use the digit zero (0) not the letter (O)**



The part number PM0SOSZ6C represents:

P Series (P) with vertical mounting (M), no extender (O), double pole switch (S), single voltage (O), single fuse (S), high performance (Z), 6A (6) with complete can shield (C)

CASE DIMENSIONS



Typical Dimensions:

Line Inlet (1):	IEC 60320-1 C14
Terminals (2):	.250 [6.4] with .07 [1.8] Dia. hole. Recommended for use with mating connectors, no solder
Ground Terminal (1):	.250 [6.4] with .16 x .07 [4.1 x 1.8] slot. Recommended for use with mating connectors, no solder

corcom.com

