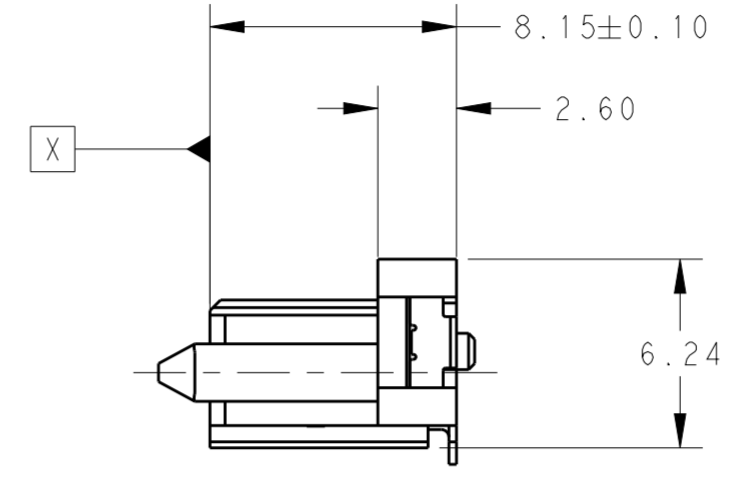
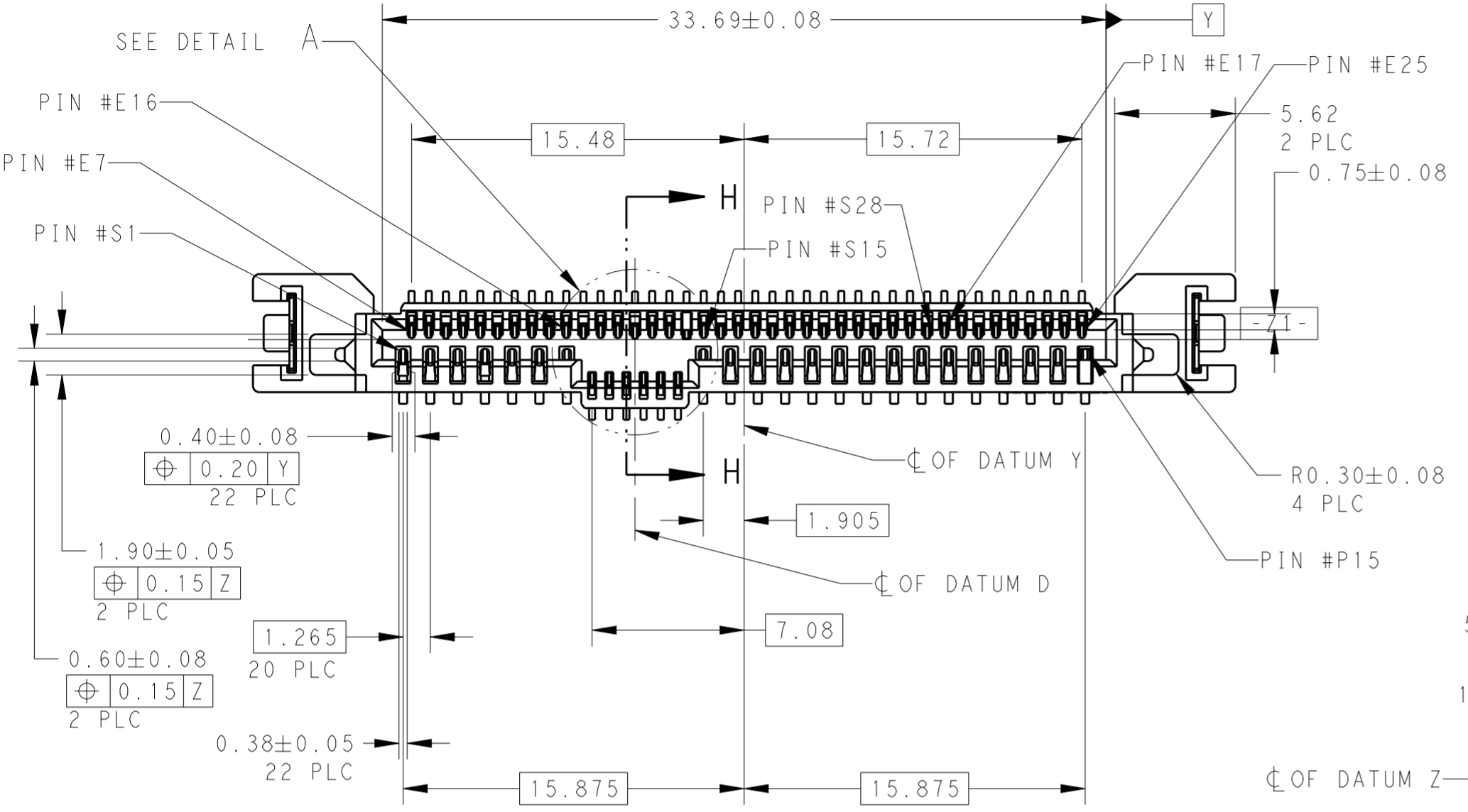
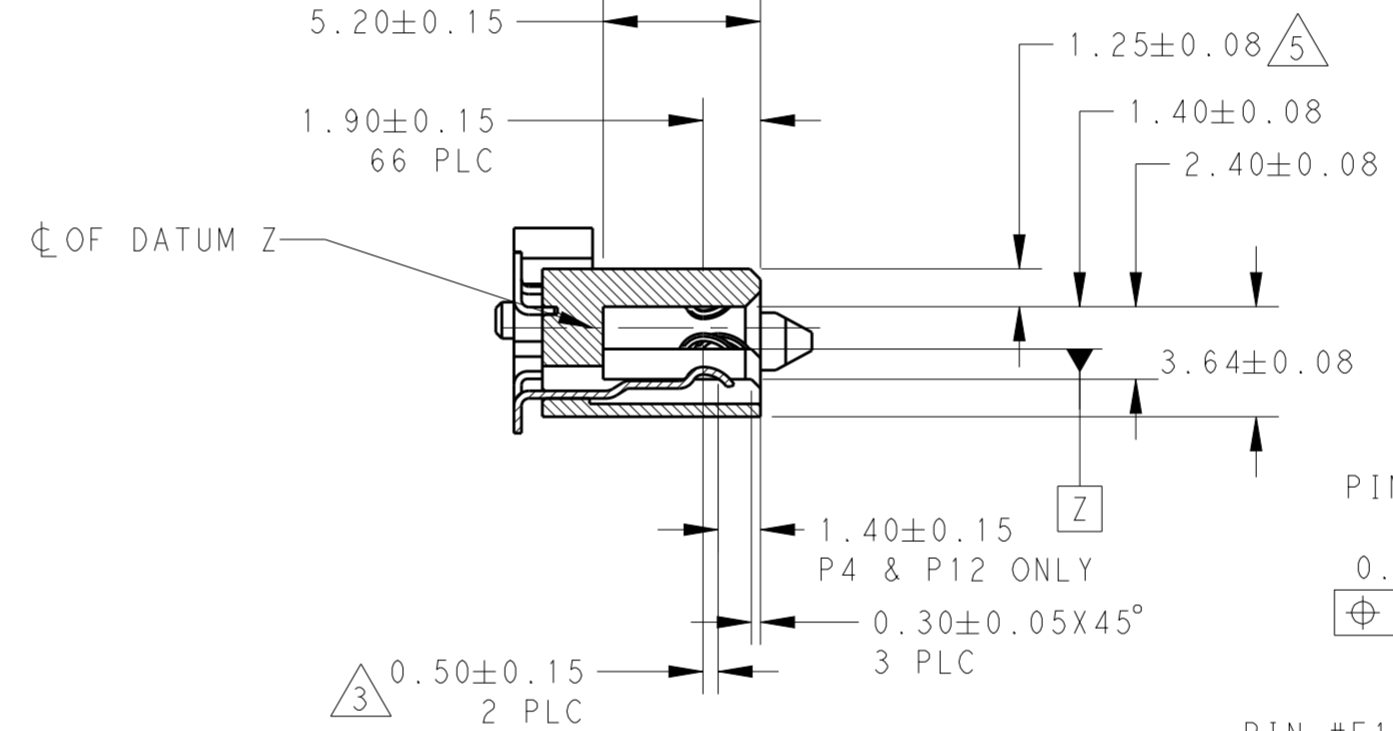


THIS DRAWING IS UNPUBLISHED. RELEASED FOR PUBLICATION 20  
 © COPYRIGHT 20 BY - ALL RIGHTS RESERVED.

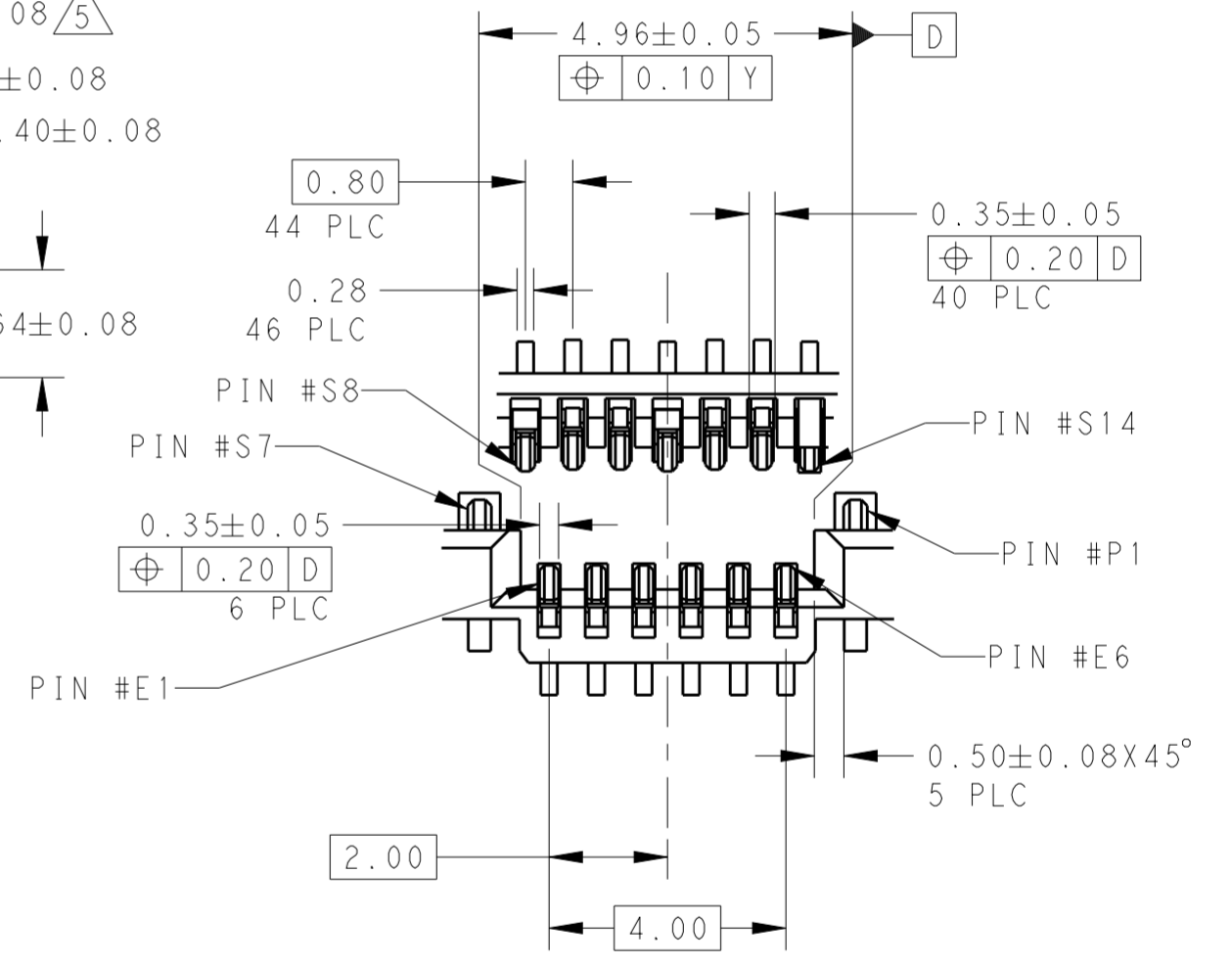
LOC		DIST		REVISIONS			
P	LTR	DESCRIPTION	DATE	DWN	APVD		
		1	FIRST ISSUE	10APR2013	BL	AC	
		2	REVISED THE HOUSING POST	15APR2013	TX	AC	
		3	REVISED THE NOTE	16OCT2013	TX	JY	



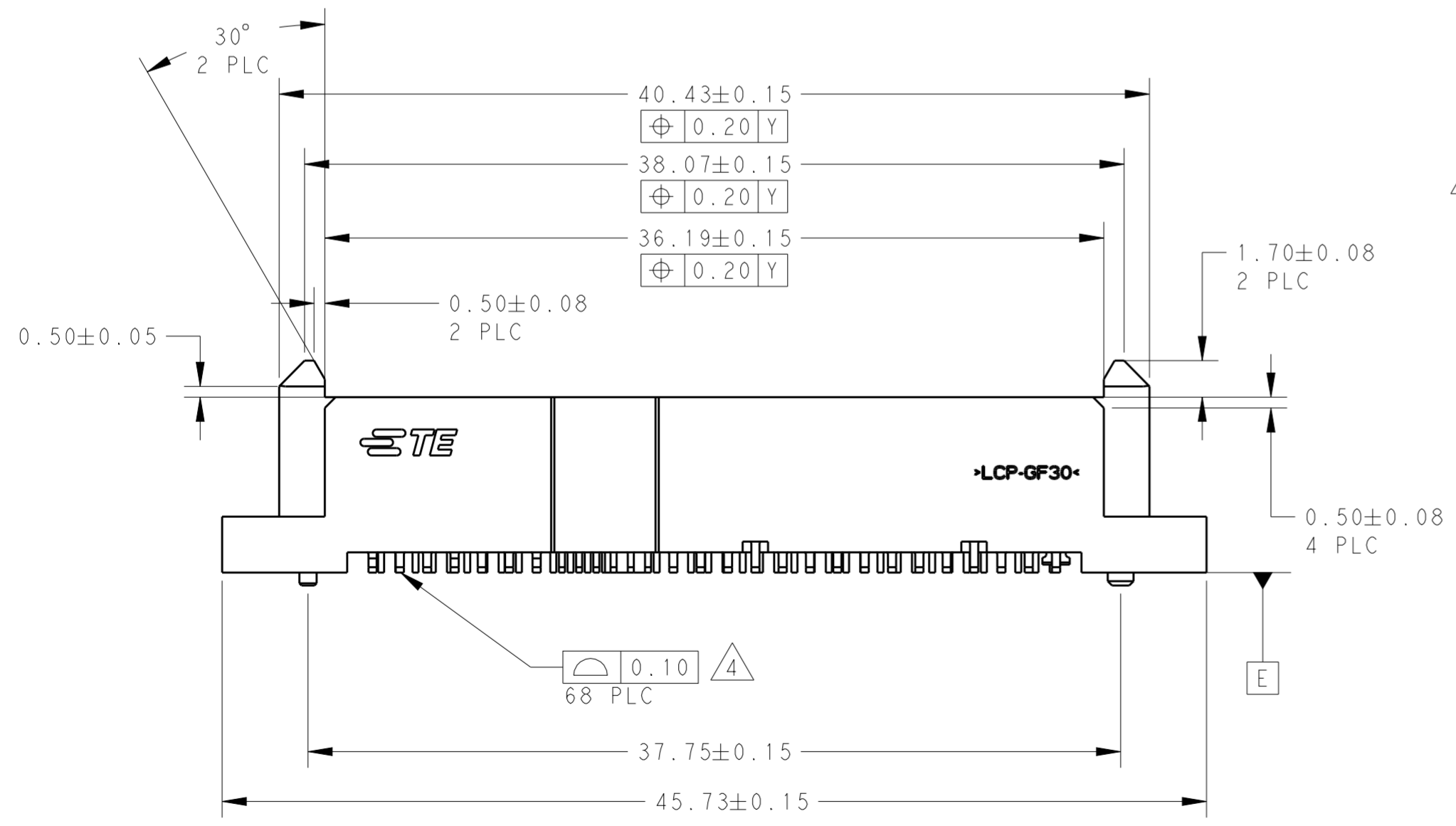
- NOTES:
- 1 MATERIAL:  
HOUSING: HIGH TEMP THERMOPLASTIC, UL94V-0,  
COLOR:BLACK  
CONTACT: COPPER ALLOY  
BOARDLOCK: COPPER ALLOY
  - 2 FINISH:  
CONTACT AREA:  
MIN 0.76µm GOLD PLATING  
SOLDERTAIL: MIN 2.54µm MATTE TIN PLATING  
UNDERPLATE: MIN 1.27µm NICKEL PLATING
  - 3 PIN #P4 AND #P12 ONLY
  - 4 SOLDERTAIL TO BE 0.05 MAX ABOVE  
AND 0.10 MAX BELOW DATUM E
  - 5 1.33 MAX MEASURED AT DATUM C



SECTION H-H  
SCALE 4:1



DETAIL A  
SCALE 8:1



**PRELIMINARY**

TRAY	YES	2170518-3
TAPE & REEL	YES	2170518-2
TRAY	NO	2170518-1
PACKAGING	PICK-UP CAP (1)	PART NUMBER

THIS DRAWING IS A CONTROLLED DOCUMENT.		DWN	10APR2013	<b>STE</b> TE Connectivity
DIMENSIONS:		CHK	10APR2013	
mm		APVD	10APR2013	
TOLERANCES UNLESS OTHERWISE SPECIFIED:		NAME		
0 PLC	±	ALEX CAI		
1 PLC	±0.20	PRODUCT SPEC		
2 PLC	±0.20	APPLICATION SPEC		
3 PLC	±0.20	WEIGHT		
4 PLC	±	SCALE		
ANGLES	±3°	SHEET		
FINISH		REV		
MATERIAL		Customer Drawing		

**PRELIMINARY**

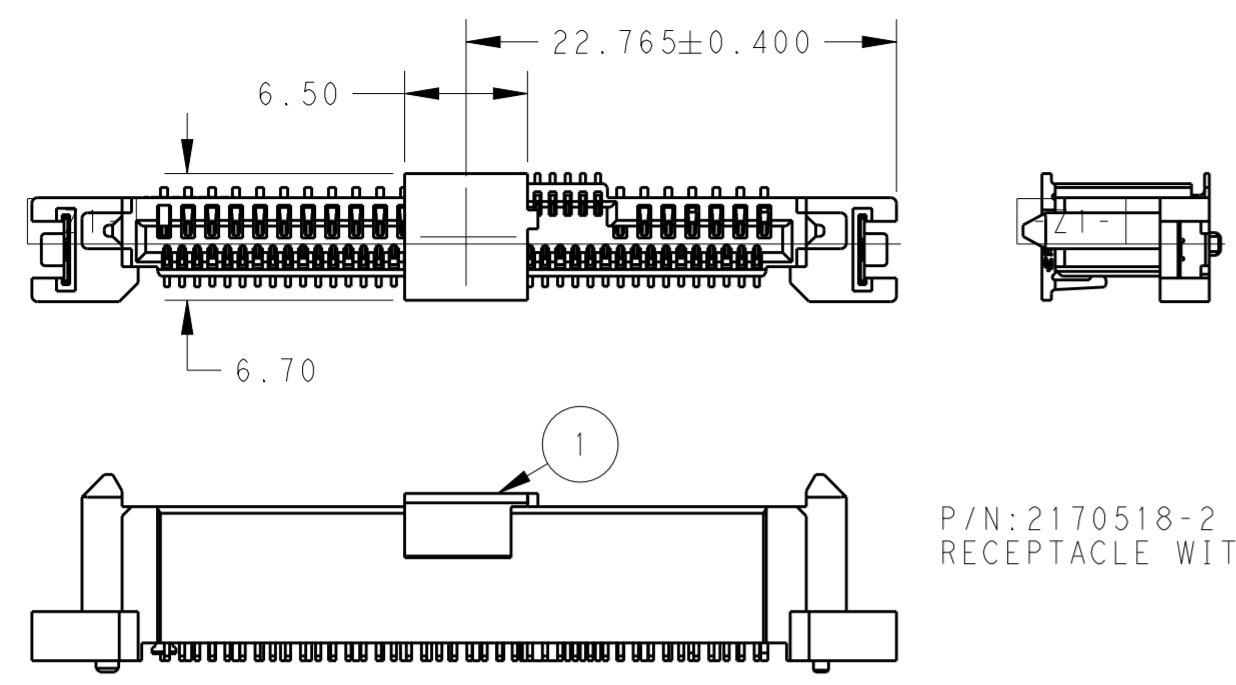
12G SAS/PCIe COMBO  
RECEPTACLE (WITH SMT HOLDDOWNS)  
15P+7P+6P+40P

SIZE: A2 CAGE CODE: G-2170518 DRAWING NO: 2170518-3  
RESTRICTED TO: -

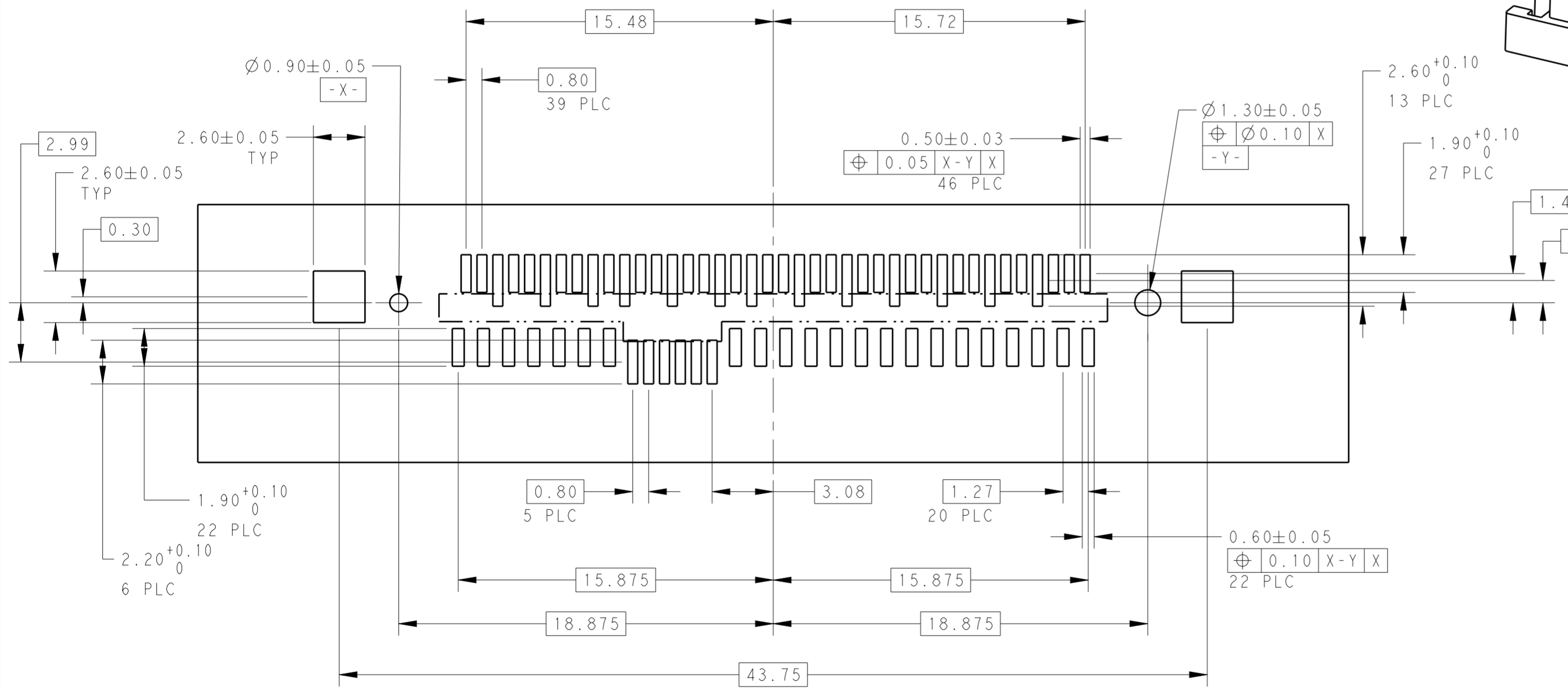
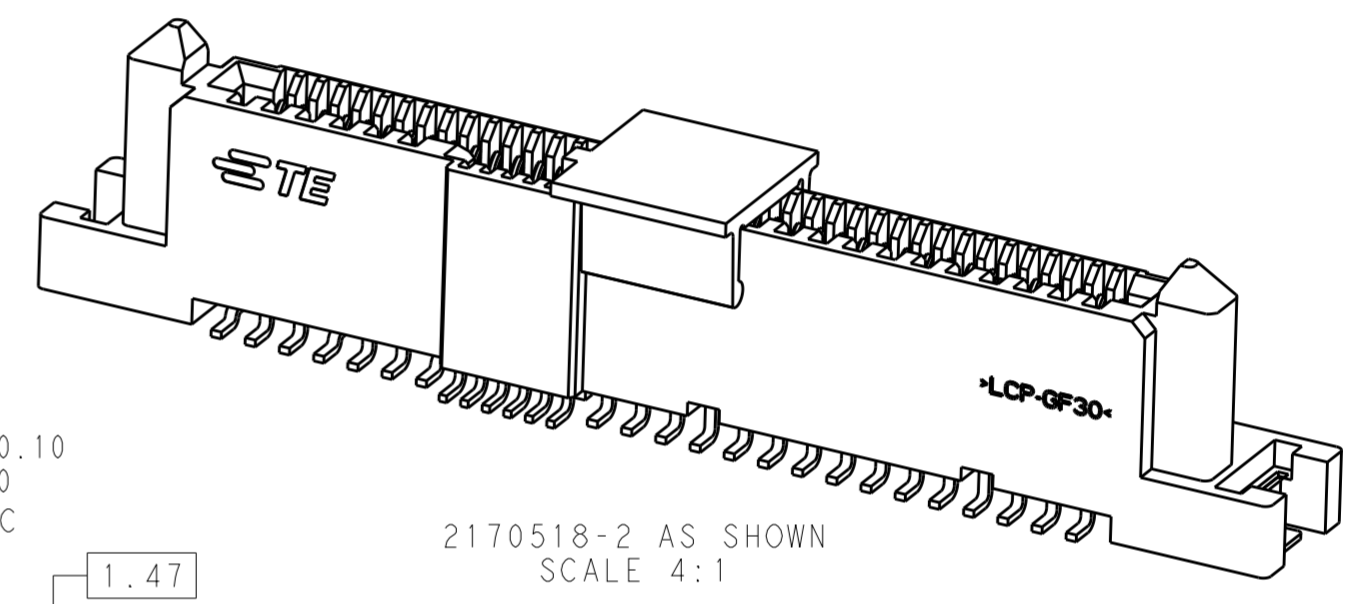
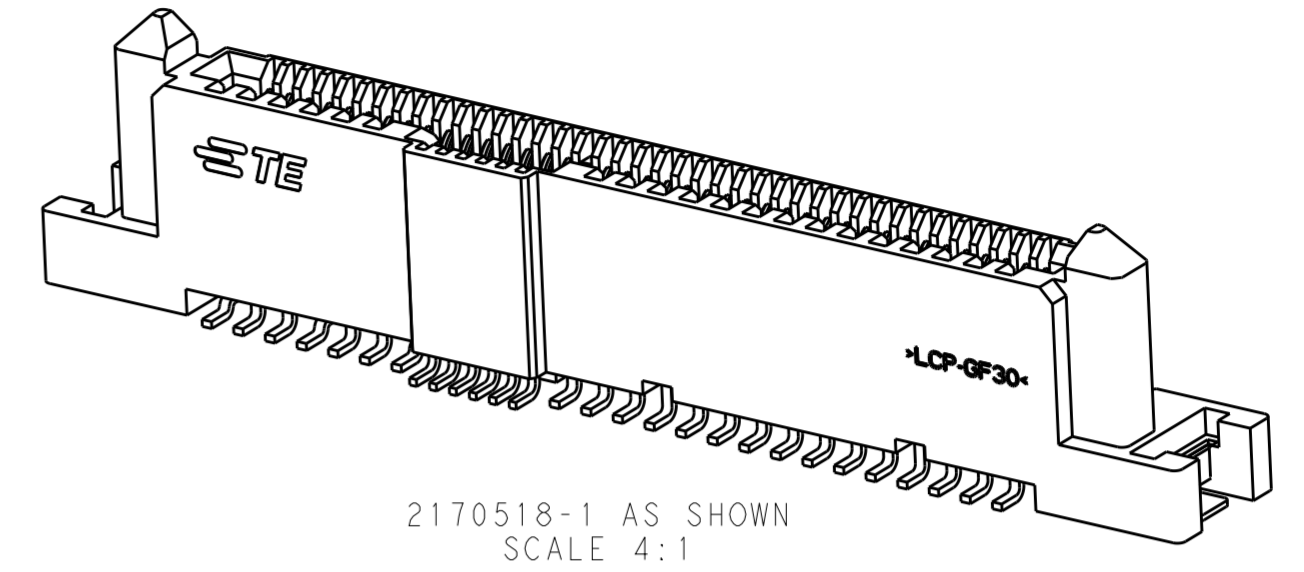
SCALE: 2:1 SHEET 1 OF 2 REV 3

THIS DRAWING IS UNPUBLISHED. RELEASED FOR PUBLICATION 20  
 © COPYRIGHT 20 BY - ALL RIGHTS RESERVED.

LOC		DIST		REVISIONS			
P	LTR	DESCRIPTION	DATE	DWN	APVD		
-	-	SEE SHEET 1	-	-	-		



P/N: 2170518-2 AS SHOWN  
 RECEPTACLE WITH PICK-UP CAP



RECOMMENDED RECEPTACLE BOARD LAYOUT  
 SCALE 5:1

**PRELIMINARY**

THIS DRAWING IS A CONTROLLED DOCUMENT.		DWN BING LIU 10APR2013	TE Connectivity	
DIMENSIONS: mm		CHK JASON YANG 10APR2013		
TOLERANCES UNLESS OTHERWISE SPECIFIED:		APVD ALEX CAI 10APR2013	NAME 12G SAS/PCIe COMBO RECEPTACLE (WITH SMT HOLDDOWNS) 15P+7P+6P+40P	
0 PLC ± 1 PLC ±0.20 2 PLC ±0.20 3 PLC ±0.20 4 PLC ± ANGLES ±3° FINISH		PRODUCT SPEC -	SIZE A200779	DRAWING NO C-2170518
MATERIAL -		APPLICATION SPEC -	RESTRICTED TO -	SCALE 2:1
		WEIGHT -	SHEET 2 OF 2	REV 3
		Customer Drawing		