



Have a Question?  
Chat with a Product Information Specialist

What can we help you find?

Products Industries Resources About TE My Account Innovation Support Center

2-179608-2 Product Details

Share Print Email



2-179608-2

TE Internal Number: 2-179608-2

Active

View 3D PDF

2mm AMP CT Connectors

Always EU RoHS/ELV Compliant (Statement of Compliance)

Product Highlights:

- Wire-to-Board
- Accessory
- Accessory Type = Holder
- For Use With MT Connector
- 22 Positions

View all Features

Quick Links

- ▶ Pricing & Availability
- ▶ Search for Tooling
- ▶ Product Feature Selector
- ▶ Contact Us About This Product

Add to My Part List Request Sample Find Similar Products Buy Product

Documentation & Additional Information	
<p><b>Product Drawings:</b></p> <ul style="list-style-type: none"> <li>• <a href="#">HOLDER FOR CT DOUBLE ROW CONN. (TYPE:CT MT TYPE) (PDF, English)</a></li> </ul> <p><b>Catalog Pages/Data Sheets:</b></p> <ul style="list-style-type: none"> <li>• <a href="#">2.0MM AMP CT CONNECTOR SERIES QUICK REF GUIDE (PDF, English)</a></li> </ul> <p><b>Product Specifications:</b></p> <ul style="list-style-type: none"> <li>• <a href="#">CT DOUBLE ROW CONNECTOR (PDF, English)</a></li> </ul> <p><b>Application Specifications:</b></p> <ul style="list-style-type: none"> <li>• None Available</li> </ul> <p><b>Instruction Sheets:</b></p> <ul style="list-style-type: none"> <li>• None Available</li> </ul> <p><b>CAD Files:</b> <a href="#">(CAD Format &amp; Compression Information)</a></p> <ul style="list-style-type: none"> <li>• <a href="#">2D Drawing (DXF, Version A)</a></li> <li>• <a href="#">3D Model (IGES, Version A)</a></li> <li>• <a href="#">3D Model (STEP, Version A)</a></li> </ul> <p style="text-align: right;"><a href="#">List all Documents</a></p>	<p><b>Additional Product Images:</b></p> <ul style="list-style-type: none"> <li>• <a href="#">Typical Application</a></li> </ul> <p><b>Related Products:</b></p> <ul style="list-style-type: none"> <li>• <a href="#">Tooling</a></li> </ul>

Product Features (Please use the Product Drawing for all design activity)	
<p><b>Product Type Features:</b></p> <ul style="list-style-type: none"> <li>• Product Type = Accessory</li> <li>• Accessory Type = Holder</li> </ul> <p><b>Electrical Characteristics:</b></p> <ul style="list-style-type: none"> <li>• Contact - Rated Current (A) = 3</li> <li>• Operating Voltage Reference = AC/DC, AC, DC</li> <li>• Operating Voltage (VAC) = 125</li> <li>• Operating Voltage (VDC) = 125</li> </ul> <p><b>Termination Features:</b></p> <ul style="list-style-type: none"> <li>• Wire/Cable Size (AWG) = 22 - 30</li> <li>• Termination Method to Wire/Cable = Insulation Displacement Crimp (IDC)</li> </ul> <p><b>Dimensions:</b></p> <ul style="list-style-type: none"> <li>• Length (X-Axis) (mm [in]) = 26.30 [1.035]</li> <li>• Width (Z-Axis) (mm [in]) = 8.50 [0.334]</li> <li>• Profile Height (Y-Axis) (mm [in]) = 6.90 [0.272]</li> </ul> <p><b>Body Features:</b></p> <ul style="list-style-type: none"> <li>• Mating Retention = With</li> </ul> <p><b>Housing Features:</b></p> <ul style="list-style-type: none"> <li>• Centerline (mm [in]) = 2.00 [0.079]</li> <li>• Housing Color = Natural</li> </ul>	<p><b>Configuration Features:</b></p> <ul style="list-style-type: none"> <li>• Number of Positions = 22</li> <li>• Number of Rows = 2</li> </ul> <p><b>Industry Standards:</b></p> <ul style="list-style-type: none"> <li>• <a href="#">RoHS/ELV Compliance</a> = RoHS compliant, ELV compliant</li> <li>• <a href="#">Lead Free Solder Processes</a> = Not relevant for lead free process</li> <li>• <a href="#">RoHS/ELV Compliance History</a> = Always was RoHS compliant</li> </ul> <p><b>Environmental:</b></p> <ul style="list-style-type: none"> <li>• Operating Temperature (°C [°F]) = -30 - +105 [-22 - +221]</li> </ul> <p><b>Conditions for Usage:</b></p> <ul style="list-style-type: none"> <li>• For Use With = MT Connector</li> </ul> <p><b>Operation/Application:</b></p> <ul style="list-style-type: none"> <li>• Application Use = Wire-to-Board</li> <li>• Pick and Place Cover = Without</li> </ul> <p><b>Packaging Features:</b></p> <ul style="list-style-type: none"> <li>• Packaging Method = Bag</li> </ul> <p><b>Other:</b></p> <ul style="list-style-type: none"> <li>• Brand = AMP</li> <li>• Comment = Two receptacle connectors are applied per holder.</li> </ul>

NUMBER C-179608



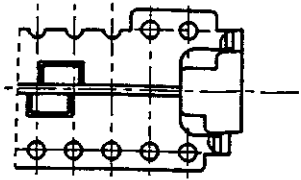
METRIC

2-179608-4 : 本 ☒

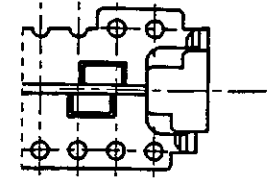
2-179608-4 : AS SHOWN

注記  
1. 適用コネクタ型番 : X-173977-X (リセ)

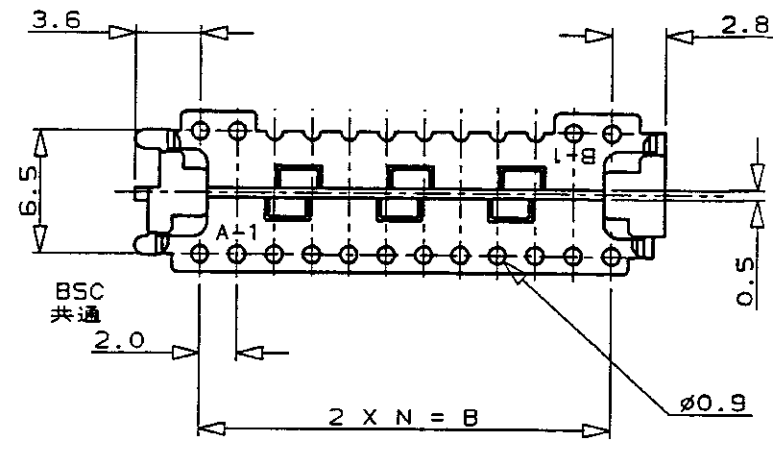
NOTE  
1. CONNECTOR P/N : X-173977-X(REC)



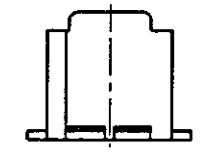
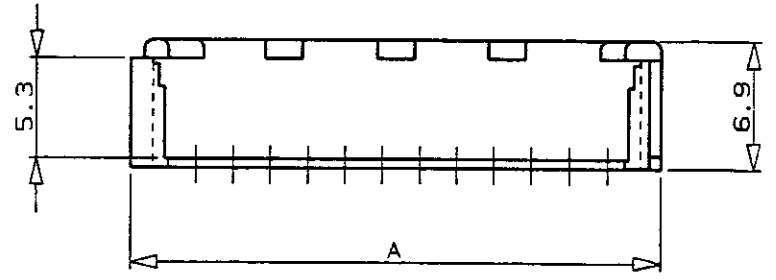
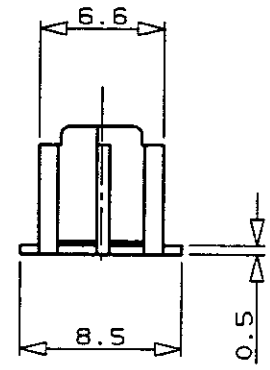
26P, 20P



28P, 22P, 16P



30P, 24P, 18P



34.3	28.0	14	30	3-179608-0
32.3	26.0	13	28	2- -8
30.3	24.0	12	26	2- -6
28.3	22.0	11	24	2- -4
26.3	20.0	10	22	2- -2
24.3	18.0	9	20	2- -0
22.3	16.0	8	18	1- -8
20.3	14.0	7	16	1-179608-6
A	B	N	POS 極数	型番 P/N

単位: 概 DIMENSIONS IN MM. DO NOT SCALE PRINT

PRINT DIST

AMP-J REV. 10/'93

A	REVISED	FJ00-4832-94	H.S.T.F.	7/25 '96
0	RELEASED	FJ00-0588-94	T.F.S.K.	5/18 '94
LTR	変更 (REVISION RECORD)	DR	CHK	DATE

Copyright ©1990年 AMP (Japan) LTD. ALL RIGHTS RESERVED.		Copyright ©1990 AMP (Japan) LTD. ALL RIGHTS RESERVED.	
電線断面積 (WIRE RANGE)	被覆外径 (INSULATION DIA.)	名称 (NAME)	
# mm² (AWG #)	# mmφ	CT ダブルローコネクタ用ホルダー (タイプ: CT MT 用)	
材料 (MATERIAL)	色 (COLOR)	HOLDER FOR CT DOUBLE ROW CONN. (TYPE: CT MT TYPE)	
66NYLON	NATURAL	一般公差 (GENERAL TOLERANCE)	
66ナイロン樹脂	自然色	10以下: ±0.2	
OR. T. FURUYA	DE. T. FURUYA	10を超え 30以下: ±0.25	
CHK. S. KUBOUCHI	APP. S. Kubouchi 7/25 '96	30を超え 100以下: ±0.3	
		角 度: ±3°	

<b>AMP</b>		日本エー・エム・ピー株式会社 Kasawaki, Japan	
SIZE	LOC	番号 (No.)	
B	J	C-179608	
尺度 (SCALE)	REV.	SHEET	
#	A	1 OF 1	

(CUSTOMER DRAWING) 参考 ☒ 面