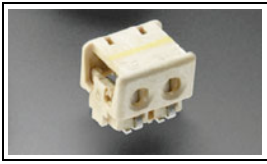


2-2106431-3 Product Details

[Share](#) [Print](#) [Email](#)



2-2106431-3

TE Internal Number: 2-2106431-3

Active

[View 3D PDF](#)

Solid State Lighting (SSL) IDC Connectors

Always EU RoHS/ELV Compliant (Statement of Compliance)

Product Highlights:

- Wire-to-Board
- 4.00 mm Centerline
- Applies To Printed Circuit Board
- Contact Current Rating, Max. = 7 A
- Operating Voltage = 250 VAC

[View all Features](#)

Quick Links

- ▶ [Pricing & Availability](#)
- ▶ [Search for Tooling](#)
- ▶ [Product Feature Selector](#)
- ▶ [Contact Us About This Product](#)

[Add to My Part List](#) [Request Sample](#) [Find Similar Products](#) [Buy Product](#)

Documentation & Additional Information

Product Drawings:

- [ASSEMBLY, IDC SSL CONNECTOR, SMT, PASS THRU \(PDF, English\)](#)

Catalog Pages/Data Sheets:

- [IDC_SSL_CONNECTOR \(PDF, English\)](#)

Product Specifications:

- [IDC SSL Connector \(PDF, English\)](#)

Application Specifications:

- [IDC SSL Connector \(PDF, English\)](#)

Instruction Sheets:

- None Available

CAD Files: [\(CAD Format & Compression Information\)](#)

- [2D Drawing \(DXF, Version A\)](#)
- [3D Model \(IGES, Version A\)](#)
- [3D Model \(STEP, Version A\)](#)

[List all Documents](#)

Related Products:

- [Tooling](#)

Product Features (Please use the Product Drawing for all design activity)

Product Type Features:

- Connector Type = Connector Assembly
- Connector Design = Feed Through
- Strain Relief = With
- Sealed = No
- Termination Method to PC Board = Surface Mount
- PCB Mount Retention = With
- PCB Mount Alignment = Without
- SMT Compatible = Yes
- Mount Angle = Right Angle
- Wire/Cable Type = Discrete Wire
- Termination Method to Wire/Cable = Insulation Displacement Crimp (IDC)
- Keyed = No
- PCB Mount Retention Type = Solder Pads
- Make First / Break Last = No

Electrical Characteristics:

- Contact Current Rating, Max. (A) = 7
- Operating Voltage (VAC) = 250
- Operating Voltage (VDC) = 250

Termination Features:

- Tail Orientation = Staggered
- Wire/Cable Size (AWG) = 22
- Tool-less Wire Termination = Yes

Dimensions:

- Length (X-Axis) (mm [in]) = 13.70 [0.539]
- Width (Z-Axis) (mm [in]) = 7.75 [0.305]
- Profile Height (Y-Axis) (mm [in]) = 5.80 [0.228]
- Post-Mating Assembly Measurement (mm [in]) = 13.7 [0.539]

Housing Features:

- Centerline (mm [in]) = 4.00 [0.157]
- Housing Material = Liquid Crystal Polymer (LCP)
- Housing Color = Natural
- UL Flammability Rating = UL 94V-0

Configuration Features:

- Number of Positions = 3
- [Number of Rows](#) = 1
- Pre-Designed Cables Available = No

Industry Standards:

- Agency/Standard = CSA, UL
- Agency/Standard Number = C22.2 No. 182.3-M1987, UL 1977
- [RoHS/ELV Compliance](#) = RoHS compliant, ELV compliant
- [Lead Free Solder Processes](#) = Wave solder capable to 240°C, Wave solder capable to 260°C, Wave solder capable to 265°C
- RoHS/ELV Compliance History = Always was RoHS compliant

Identification Marking:

- Circuit Identification Feature = Without

Environmental:

- Operating Temperature (°C [°F]) = -40 - +105 [-40 - +221]

Conditions for Usage:

- Applies To = Printed Circuit Board
- Accepts Wire Insulation Diameter, Range (mm [in]) = 1.70 [0.067]
- SMT Soldering Temperature (°C [°F]) = 220 [428]
- Lighting Interconnect Level = Level 1
- Glow Wire Rating = Standard Part - Not Glow Wire
- UV Exposure Rated = No

Body Features:

- Header Mating Direction = Horizontal
- Strain Relief Type = Terminating Covers

Contact Features:

- Contact Plating, Termination Area, Material = Matte Tin-Lead over Nickel
- Contact Plating, Termination Area, Thickness (μm [μin]) = 5.08 [200]
- Contact Plating, Mating Area, Material = Matte Tin
- Contact Plating, Mating Area, Thickness (μm [μin]) = 5.08 [200]
- Stamped and Formed = Yes

Operation/Application:

- Application Use = Wire-to-Board

Packaging Features:

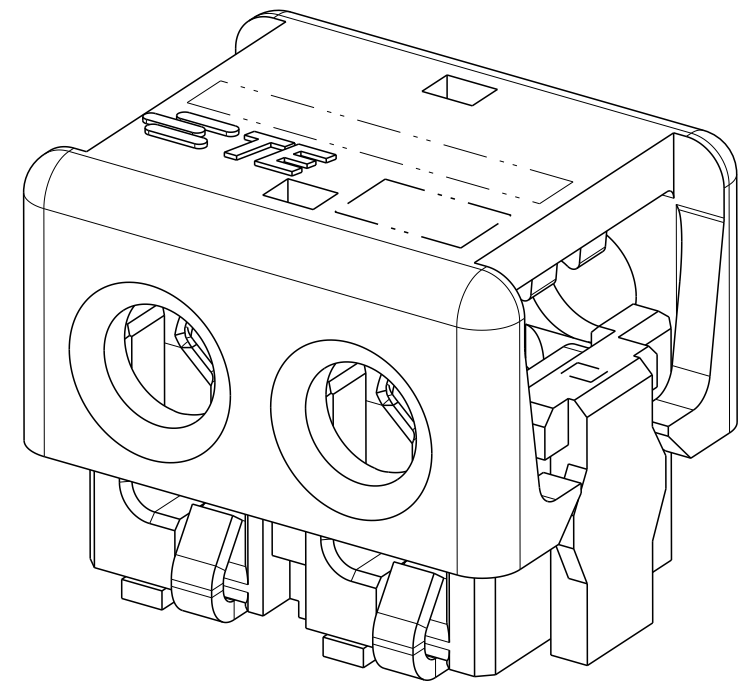
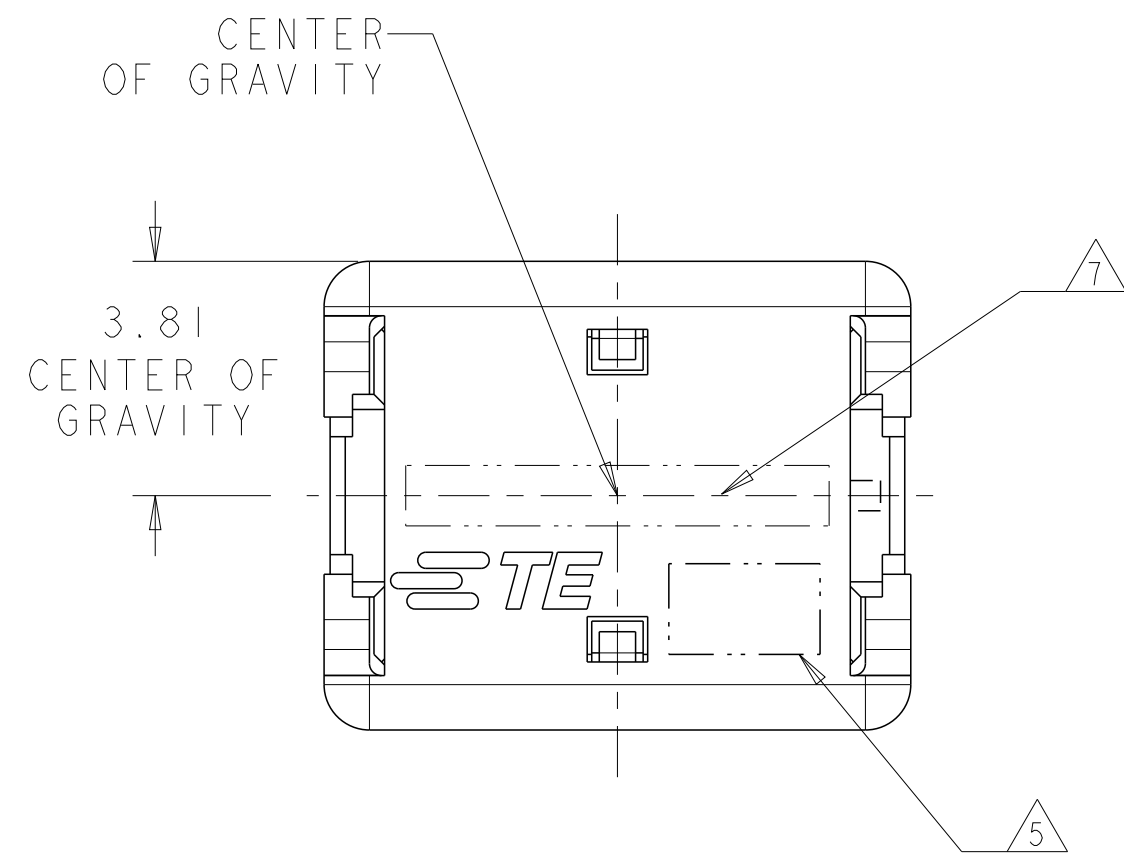
- Packaging Method = SMT Pocket Tape

Other:

- Brand = TE Connectivity

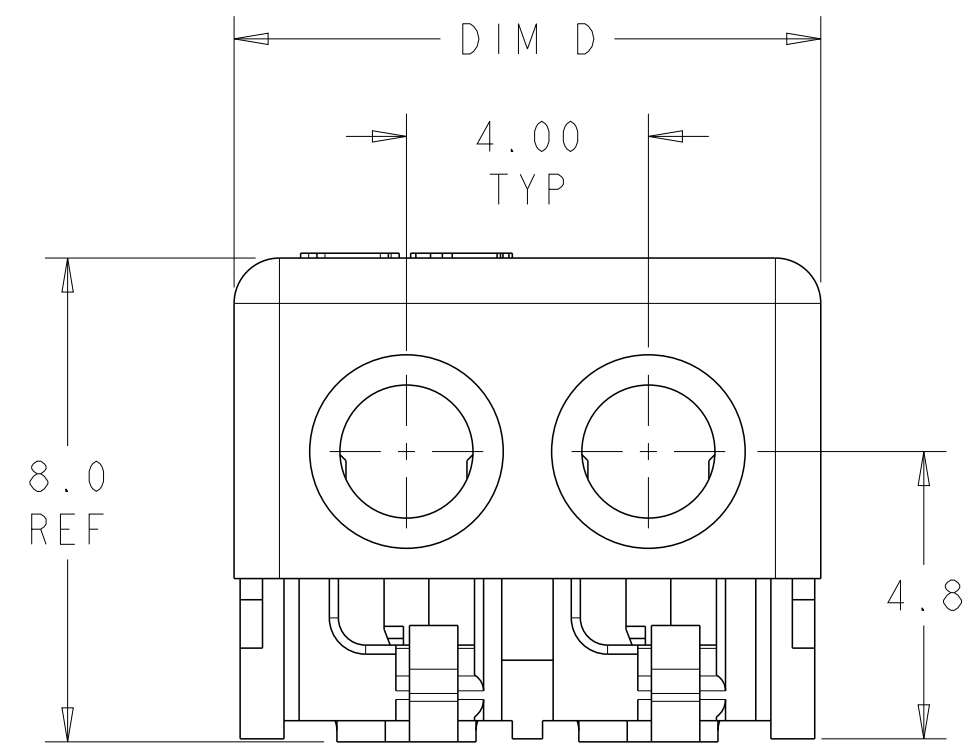
THIS DRAWING IS UNPUBLISHED. RELEASED FOR PUBLICATION 20
 © COPYRIGHT 20 BY - ALL RIGHTS RESERVED.

LOC	DIST	REVISIONS					
CM	00	P	LTR	DESCRIPTION	DATE	DWN	APVD
		A		REVISED PER ECR-1025509	15DEC2010	HMR	DD
		A1		REVISED PER ECR-12-003555	19APR2012	RS	DD
		A2		REVISED PER ECR-12-016877	20OCT2012	RS	DD

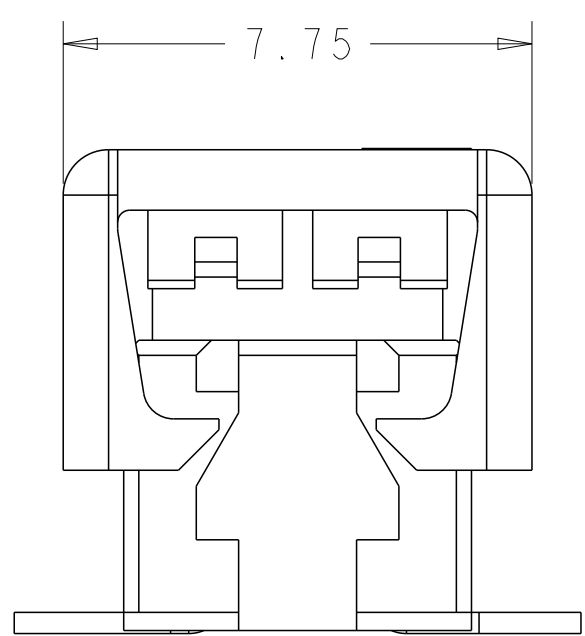


1. MATERIALS AND FINISH:
 - HOUSING: LCP, COLOR: NATURAL
 - CONTACTS: COPPER ALLOY, FINISH: Sn OVER Ni
2. COMPLY WITH DIRECTIVE 2002/95/EC (ROHS).
3. 18-22AWG SOLID OR STRANDED WIRE, PRE-BONDED, 19 STRANDS OR LESS:
 18AWG MAX INSULATION OD: 2.20
 20AWG MAX INSULATION OD: 1.90
 22AWG MAX INSULATION OD: 1.70
 24AWG MAX INSULATION OD: 1.45
4. PACKAGE IN TAPE AND REEL PER EIA-481 SPECIFICATION, EXCEPT 1 POSITION CONNECTOR.

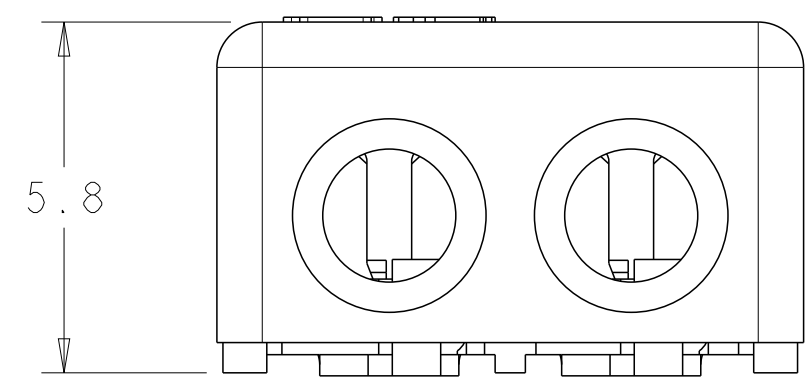
5. WIRE SIZE MARKING IN APPROXIMATE LOCATION SHOWN.
6. DATUMS AND BASIC DIMENSIONS ESTABLISHED BY CUSTOMER.
7. COLOR CODE MARKING, STRAIGHT LINE.
8. 1 POSITION ASSEMBLY DOES NOT COMPLY WITH EIA 481 SPECIFICATION.



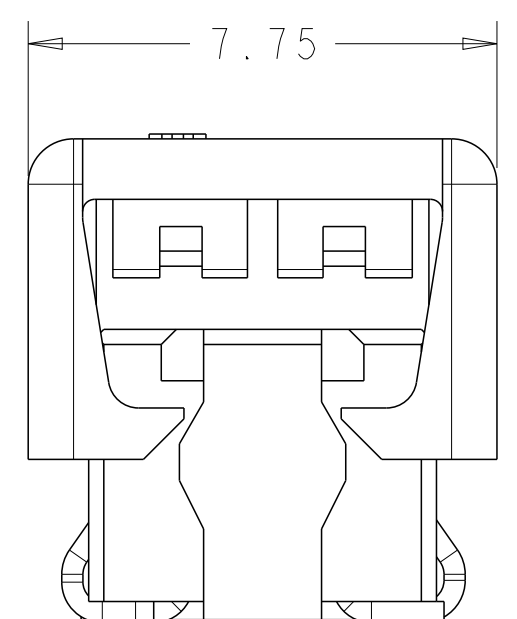
2 POSITION SHOWN AS SHIPPED



FOR 1 POSITION ONLY



2 POSITION SHOWN CLOSED SCALE 8:1



FOR 2, 3 AND 4 POSITIONS

COLOR CODE	DIM D	WIRE SIZE	POSN	PART NUMBER
RED	17.70	24 AWG	4	3-2106431-4
	13.70	24 AWG	3	3-2106431-3
	9.70	24 AWG	2	3-2106431-2
	5.70	24 AWG	1	8 3-2106431-1
GREEN	17.70	22 AWG	4	2-2106431-4
	13.70	22 AWG	3	2-2106431-3
	9.70	22 AWG	2	2-2106431-2
	5.70	22 AWG	1	8 2-2106431-1
BLUE	17.70	20 AWG	4	1-2106431-4
	13.70	20 AWG	3	1-2106431-3
	9.70	20 AWG	2	1-2106431-2
	5.70	20 AWG	1	8 1-2106431-1
YELLOW	17.70	18 AWG	4	2106431-4
	13.70	18 AWG	3	2106431-3
	9.70	18 AWG	2	2106431-2
	5.70	18 AWG	1	8 2106431-1

THIS DRAWING IS A CONTROLLED DOCUMENT. DWN C DAILY 09DEC2008
 CHK J DYER 09DEC2008

STE TE Connectivity

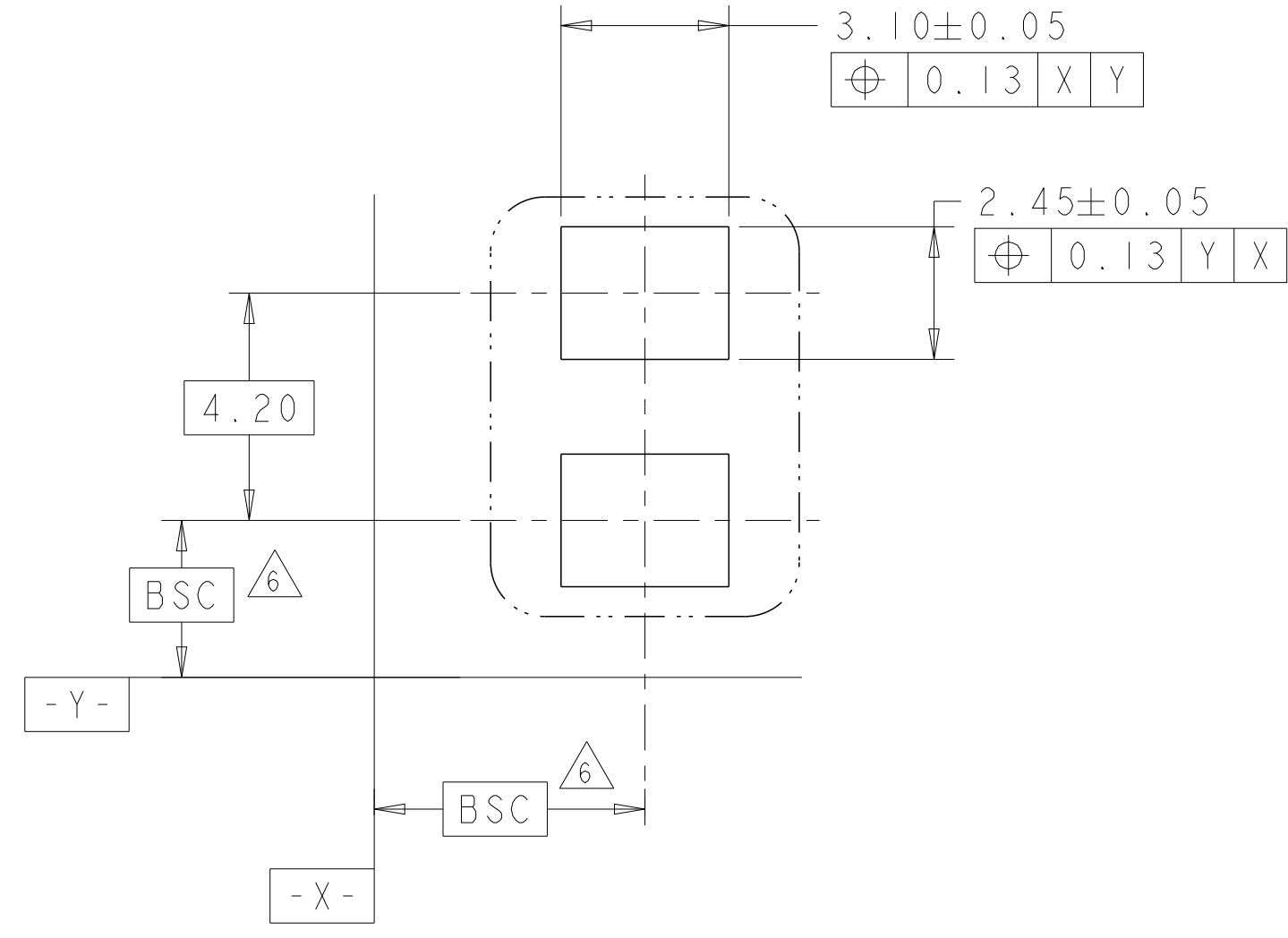
ASSEMBLY, IDC SSL CONNECTOR, SMT, PASS THRU

DIMENSIONS: mm	TOLERANCES UNLESS OTHERWISE SPECIFIED:	APVD	NAME
0 PLC ±	1 PLC ±0.5	PRODUCT SPEC	
2 PLC ±0.13	3 PLC ±	108-2404	
4 PLC ±	ANGLES ±	APPLICATION SPEC	
FINISH		114-13266	
		WEIGHT	
		Customer Drawing	

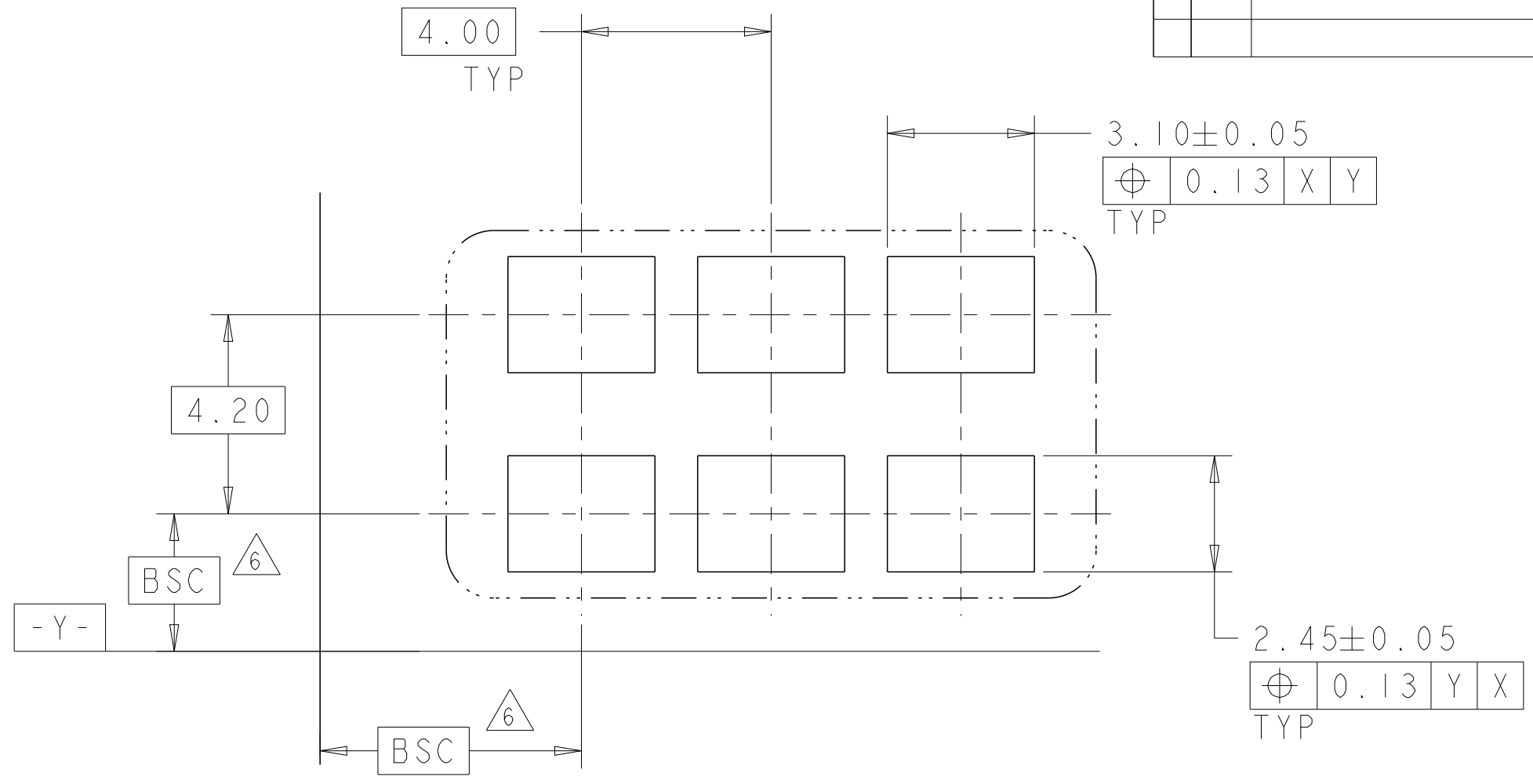
SIZE	CAGE CODE	DRAWING NO	RESTRICTED TO
A2	00779	C-2106431	
SCALE	SHEET	OF	REV
6:1	1	3	A2

THIS DRAWING IS UNPUBLISHED. RELEASED FOR PUBLICATION 20
 © COPYRIGHT 20 BY - ALL RIGHTS RESERVED.

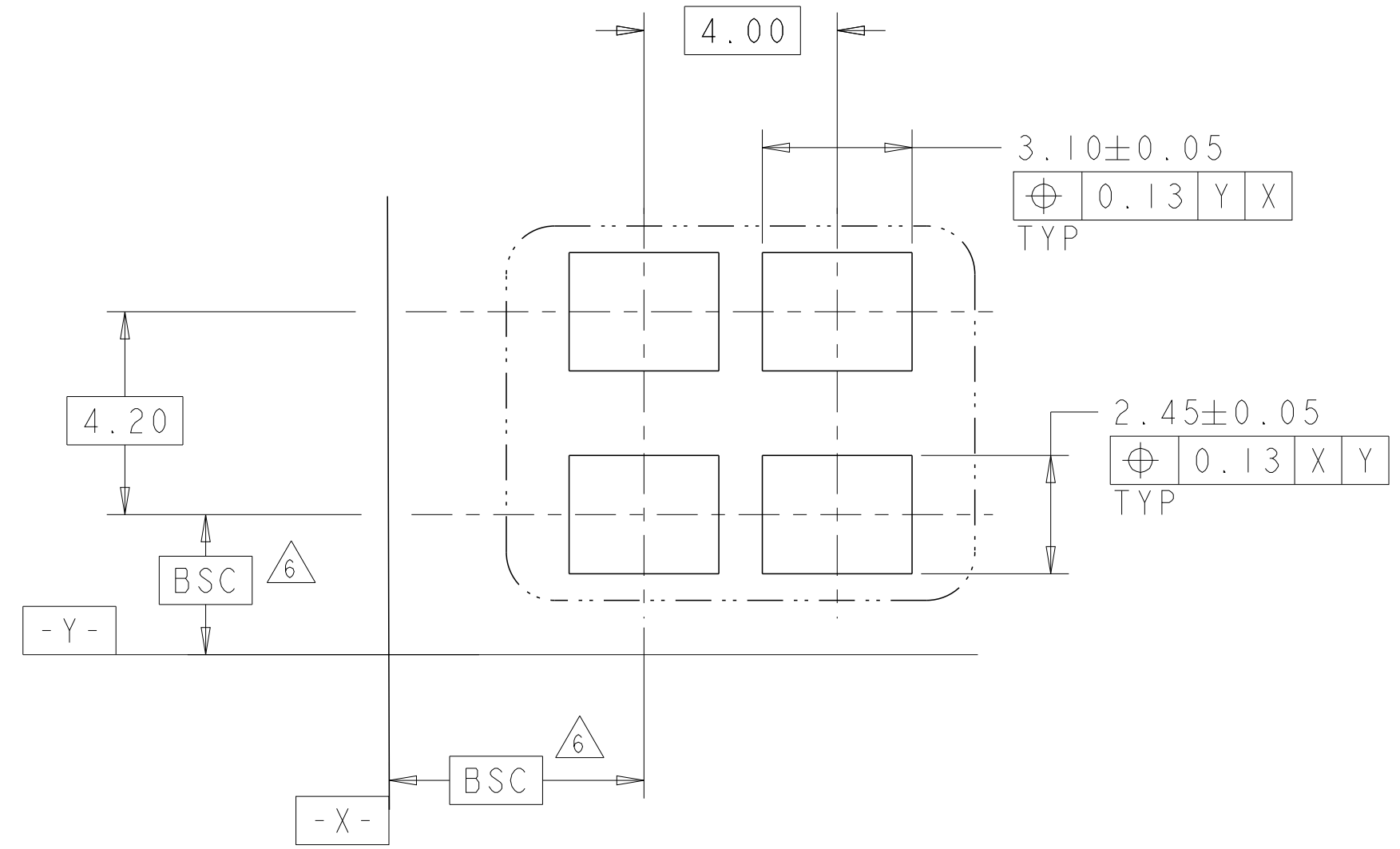
LOC	DIST	REVISIONS			
P	LTR	DESCRIPTION	DATE	DWN	APVD
CM	00	SEE SHEET 1	-	-	-



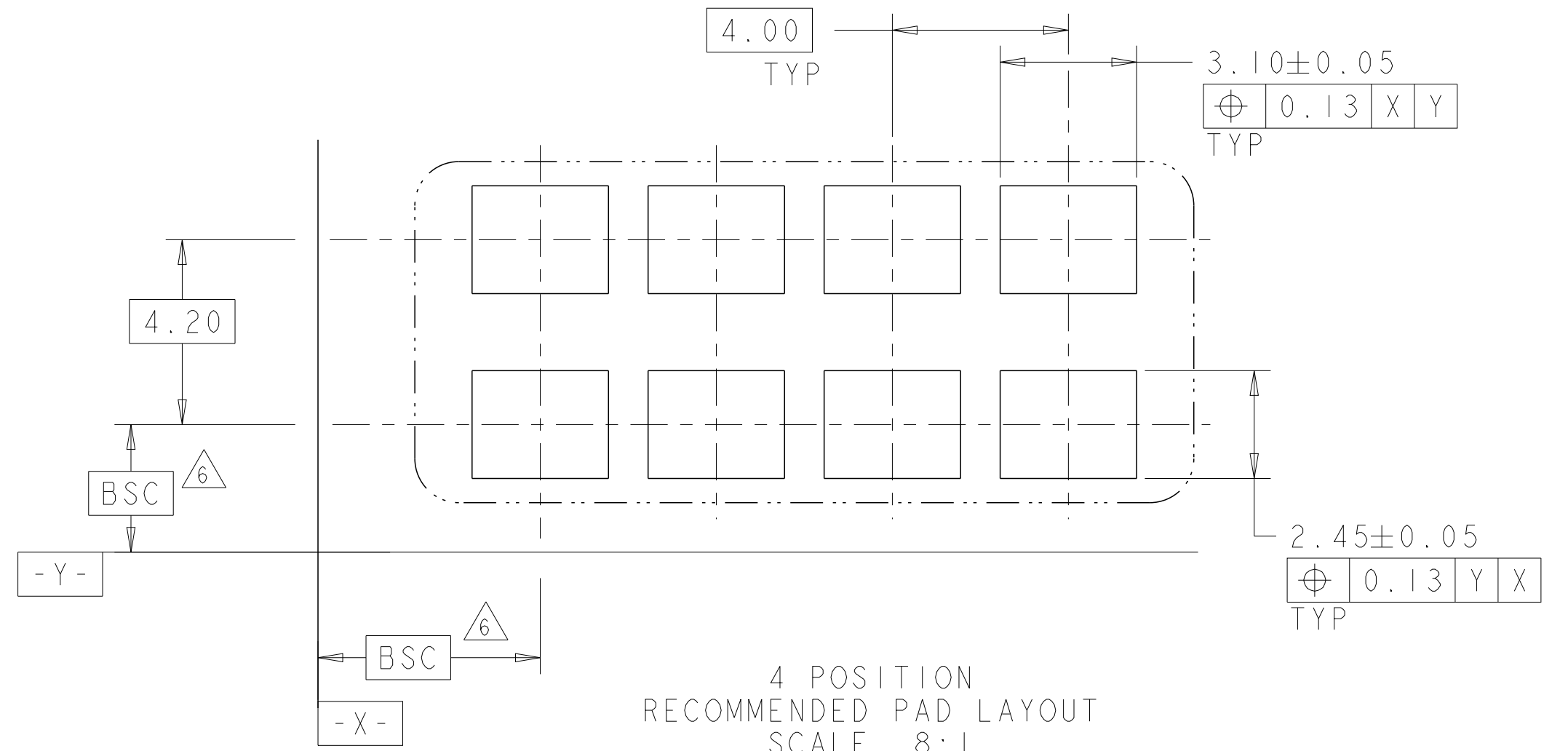
1 POSITION
RECOMMENDED PAD LAYOUT
SCALE 8:1



3 POSITION
RECOMMENDED PAD LAYOUT
SCALE 8:1



2 POSITION
RECOMMENDED PAD LAYOUT
SCALE 8:1

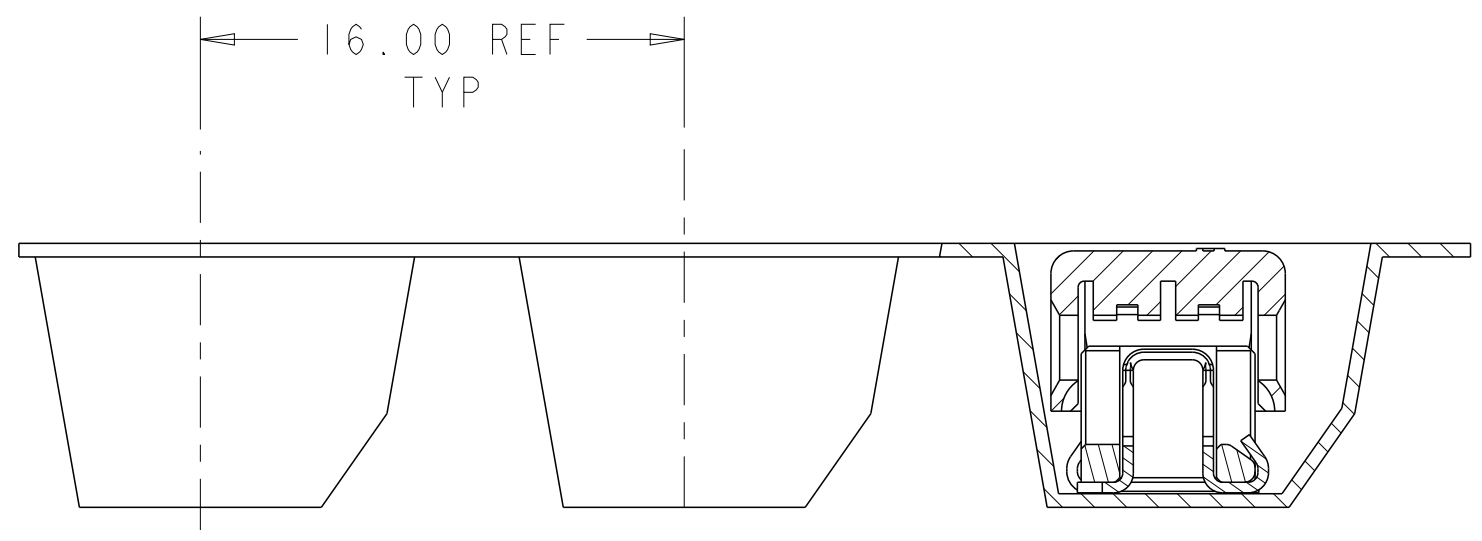
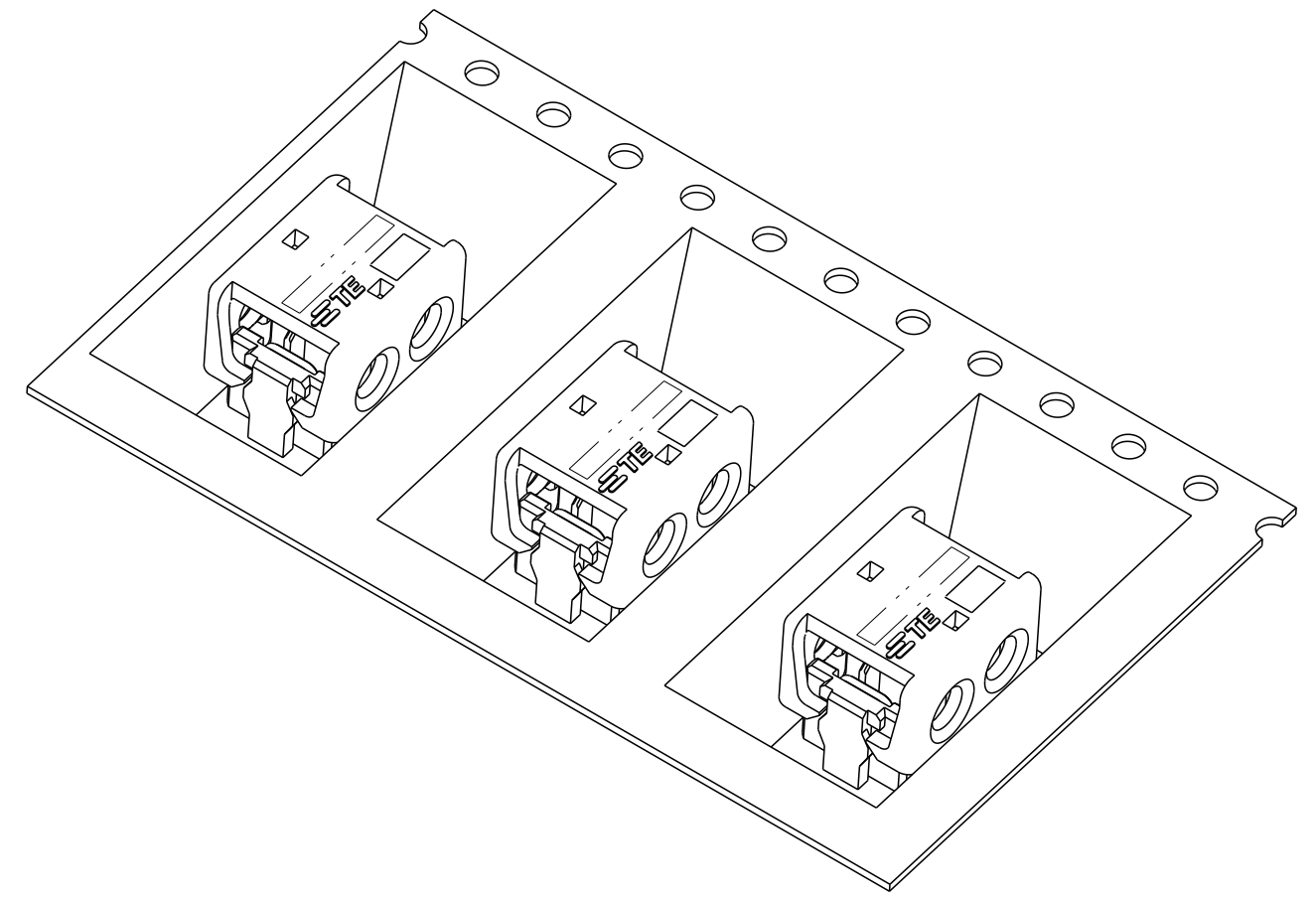
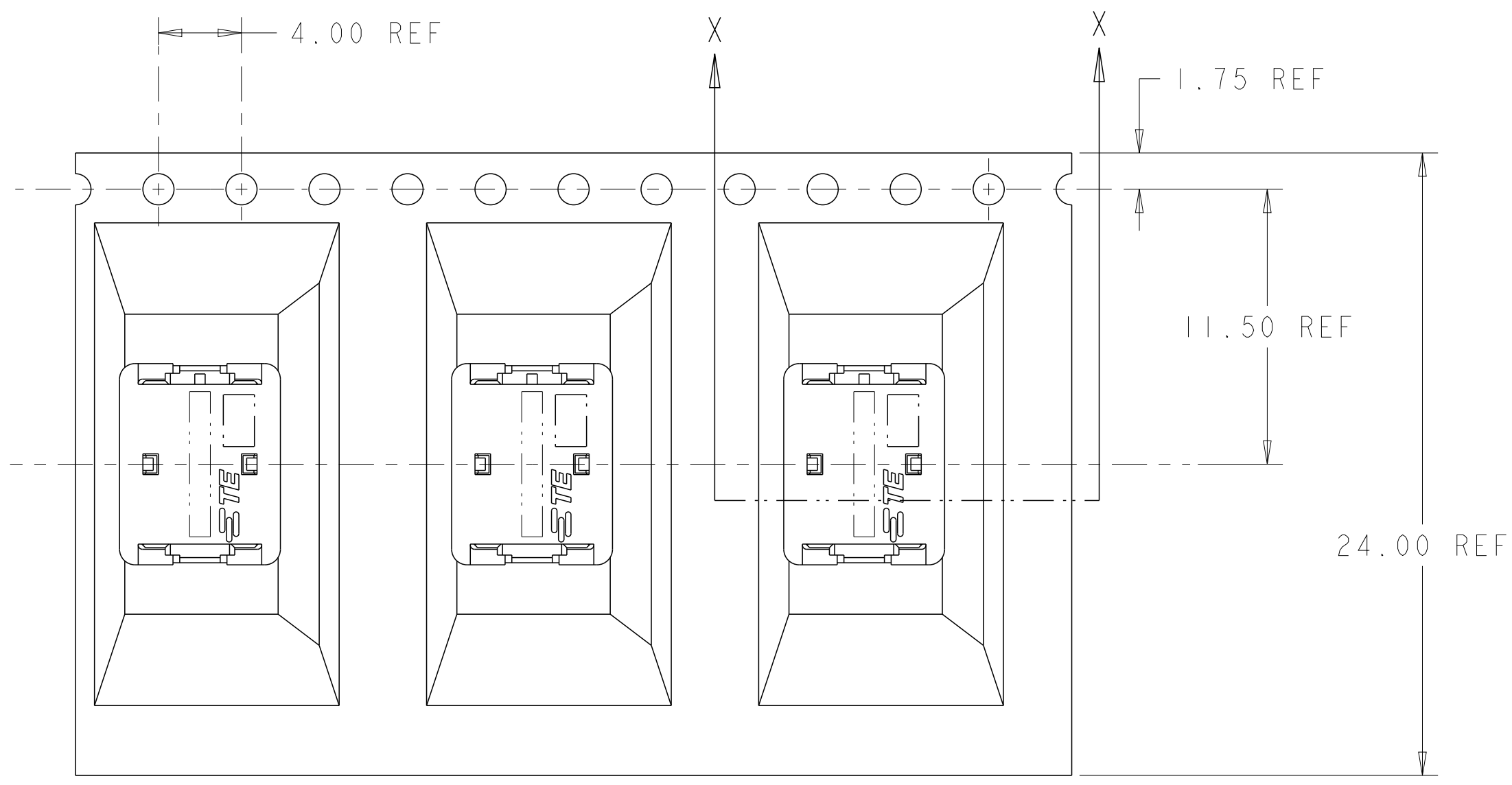


4 POSITION
RECOMMENDED PAD LAYOUT
SCALE 8:1

THIS DRAWING IS A CONTROLLED DOCUMENT.		DWN C DAILY 09DEC2008	TE Connectivity	
		CHK J DYER 09DEC2008		
DIMENSIONS:	TOLERANCES UNLESS OTHERWISE SPECIFIED:	APVD	NAME	
mm	0 PLC ±0.5 1 PLC ±0.5 2 PLC ±0.13 3 PLC ± 4 PLC ±	PRODUCT SPEC	ASSEMBLY, IDC SSL CONNECTOR, SMT, PASS THRU	
	ANGLES ±	APPLICATION SPEC	SIZE	CAGE CODE
MATERIAL	FINISH	114-13266	A200779	DRAWING NO
		WEIGHT	Customer Drawing	RESTRICTED TO
		SCALE	6:1	SHEET 2 OF 3
				REV A2

THIS DRAWING IS UNPUBLISHED. RELEASED FOR PUBLICATION 20
 © COPYRIGHT 20 BY - ALL RIGHTS RESERVED.

LOC	DIST	REVISIONS					
CM	00	P	LTR	DESCRIPTION	DATE	DWN	APVD
		-		SEE SHEET 1	-	-	-



SECTION X-X

2106431-2 SHOWN IN POCKET TAPE

THIS DRAWING IS A CONTROLLED DOCUMENT.		DWN C DAILY 09DEC2008	TE Connectivity	
		CHK J DYER 09DEC2008		
DIMENSIONS:	TOLERANCES UNLESS OTHERWISE SPECIFIED:	APVD -	NAME	
mm	0 PLC ± 1 PLC ±0.5 2 PLC ±0.13 3 PLC ± 4 PLC ± ANGLES ± FINISH ±	PRODUCT SPEC 108-2404	ASSEMBLY, IDC SSL CONNECTOR, SMT, PASS THRU	
MATERIAL	-	APPLICATION SPEC 114-13266	SIZE A200779	CAGE CODE C-2106431
		WEIGHT -	DRAWING NO C-2106431	RESTRICTED TO -
		Customer Drawing	SCALE 6:1	SHEET 3 OF 3
				REV A2