



Z-QUAD SMALL FORM-FACTOR PLUGGABLE PLUS (zQSFP+ OR QSFP28) INTERCONNECT SYSTEM

Quick Reference Guide

te.com/products/QSFP

Introducing zQSFP+ Interconnect System

TE Connectivity's (TE) zQSFP+ interconnects offer an increased data rate of 28 Gbps in an industry standard, scalable design that allows for backwards compatibility with QSFP/QSFP+ cables and transceivers, providing a simple upgrade path from 10 Gbps to 28 Gbps. The complete portfolio of interconnects deliver a large range of simple and customizable design options to meet most customer requirements.

Features and Benefits

Increased Data Rates

- 2.5 times more throughput than traditional QSFP solutions
- Data transfer rates of 28 Gbps
- Supports 100 Gbps Ethernet (28 Gbps x 4), and 100 Gbps InfiniBand (IB) Enhanced Data Rate (EDR) requirements

Industry Standard and Customizable Design

- Industry standard interface
- Backwards compatible with QSFP/QSFP+ cables and transceivers
- Higher loss budget for optics and copper cables at 10 Gbps

Comprehensive Portfolio and Inventory

- Dual sourced product available through Molex, LLC.
- Features behind and through bezel cages with various lightpipe and heat sink options
- Well-stocked distribution channel

Improved EMI Performance

- Increased data rates make EMI protection more challenging
- Provide excellent EMI protection through 28 Gbps

Applications

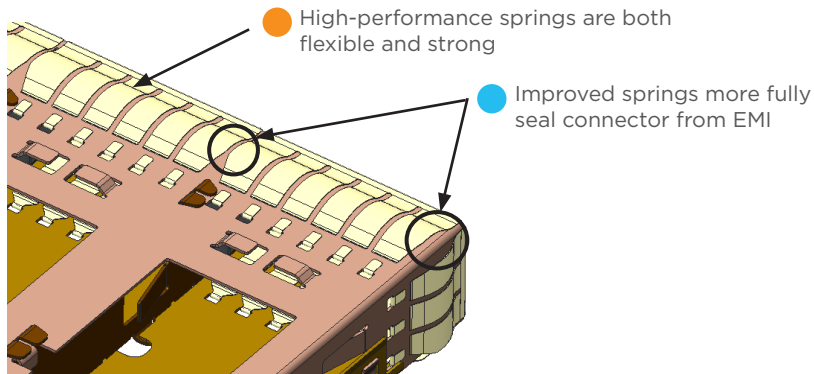
Product Applications

- Network Interface
- Switches
- Servers
- Routers
- Wireless Base Stations
- Test and Measurement Equipment

Applications by Protocol

- 100 Gigabit Ethernet
- 100 Gbps InfiniBand (IB) Enhanced Data Rate (EDR) requirements
- 128G Fibre Channel
- 25G/50G Consortium

Enhanced QSFP28 Cages



Reference part numbers 2170709-x on page 7

● Lower Assembly Insertion Force

Our new enhanced QSFP28 cages can help increase assembly throughput by providing a 55% reduction in force needed to insert the line card into the front bezel. The reduction in insertion force makes assembly easier, faster, and reduces the risk for damage which can lead to reduced EMI performance.

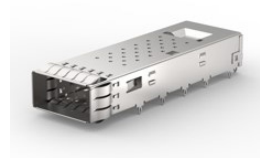
● Improved EMI Performance

EMI sealing enhancements on these new cages provide 10 dB EMI performance improvement over current QSFP28 products.

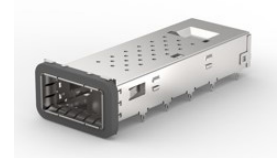
1xN Mechanical Options

Bezel Mount

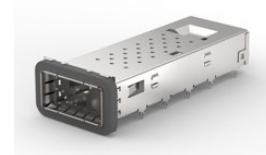
- Behind bezel cages use a gasket applied by the customer to the cage or bezel sheet metal
- EMI spring versions and gasket versions share the same PCB footprint and bezel cutout
- TE offers low insertion force EMI springs to assist in assembly of high density products



Through Bezel with EMI Springs



Through Bezel with EMI Gasket



Behind Bezel (customer applies gasket)



Single



Dual



Quad

Lightpipe Options

- TE offers 1, 2 or 4 lightpipe options per port
- Standard lightpipes are designed to support up to 1.00mm height 0805 style LEDs
- Lightpipes are shipped with an organizer to prevent optical cross-talk

Heat Sink Styles

- TE offers SAN, LAN and Networking height heatsinks
- Custom heatsinks are available upon request
- Height is max height of assembly from surface of PCB



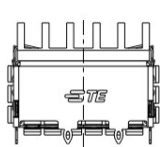
PCI (13.7mm height)



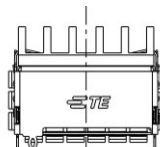
SAN (16.0mm height)



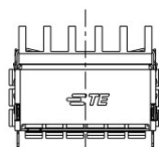
NET (23.0mm height)



2 rear EONs



1 rear EONs



0 rear EONs

Rear EONs

- Rear pins are used to improve EMI grounding and cage retention to the PCB
- TE offers all styles outlined in the SFF-8662 footprint
- Rear EONs will be dependent upon the customer's routing preference and technical specifications

2xN Mechanical Options

Bezel Mount

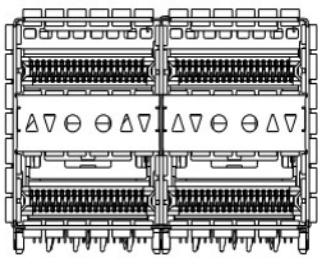
- Through bezel assemblies with EMI springs or EMI gaskets are available
- Custom gasketing options are available upon request



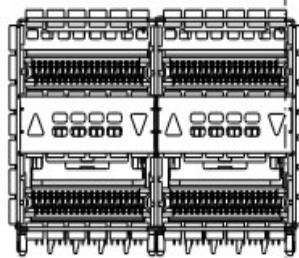
Through Bezel with EMI Springs



Through Bezel with EMI Gasket



Single (per port)



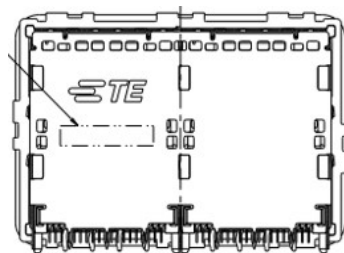
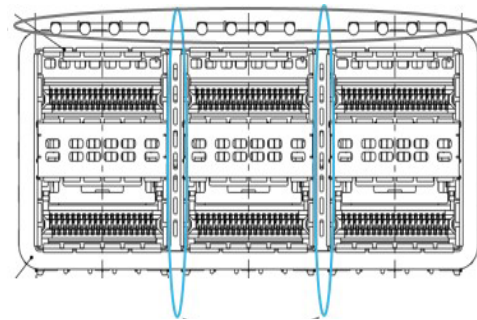
Dual (per port)

Lightpipe Options

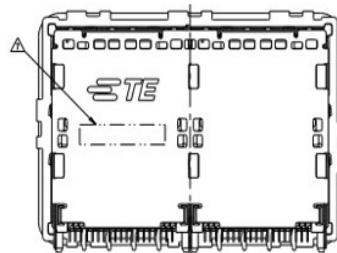
- TE offers zero, single and dual lightpipe options per port
- For higher lightpipe counts, the customer may add lightpipes underneath their PCB to indicate lower port activity
- The thermal footprint design offers 4x lightpipes assembled above the cage
- Lightpipes are designed to support up to 0.80mm height 0805 style LEDs

Thermally Enhanced Footprint

- Available in stacked configurations only
- Lightpipes are assembled above the cage to allow for airflow in the port separator area
- In configurations above 2x1, there are air channels in between port columns to allow for increased airflow



3 rear EONs



0 rear EONs

Rear EONs

- Rear pins are used to improve EMI grounding and cage retention to the PCB
- TE offers zero or three rear pins per port column
- Rear EONs will be dependent upon the customer's routing preference and technical specifications

Part Number Detail

Cages

| Base Part Number | Ports | Cage Applications | EMI Suppression | Lightpipes Applied Per Port | | | Heat Sinks | Applied | |
|------------------|-------|-------------------|-----------------|-----------------------------|------|------|------------|---------|-----|
| | | | | Single | Dual | Quad | | NET | PCI |
| 2170754 | 1x1 | Through Bezel | EMI Gasket | Yes | Yes | Yes | Yes | Yes | Yes |
| 2170705 | 1x1 | Through Bezel | EMI Springs | Yes | Yes | Yes | Yes | Yes | Yes |
| 2170773 | 1x1 | Through Bezel | EMI Springs | Yes | Yes | Yes | No | No | No |
| 2170753 | 1x1 | Through Bezel | EMI Gasket | No | No | No | Yes | Yes | Yes |
| 2170752 | 1x1 | Through Bezel | EMI Gasket | No | No | No | No | No | No |
| 2170704 | 1x1 | Through Bezel | EMI Springs | No | No | No | Yes | Yes | Yes |
| 2170703 | 1x1 | Through Bezel | EMI Springs | No | No | No | No | No | No |
| 1551892 | 1x1 | Behind Bezel | C | No | No | No | Yes | Yes | Yes |
| 1551891 | 1x1 | Behind Bezel | C | No | No | No | No | No | No |
| 2170814 | 1x2 | Through Bezel | EMI Gasket | Yes | Yes | Yes | Yes | Yes | Yes |
| 2170813 | 1x2 | Through Bezel | EMI Gasket | Yes | Yes | Yes | No | No | No |
| 2170808 | 1x2 | Through Bezel | EMI Springs | Yes | Yes | Yes | Yes | Yes | Yes |
| 2170807 | 1x2 | Through Bezel | EMI Springs | Yes | Yes | Yes | No | No | No |
| 2170812 | 1x2 | Through Bezel | EMI Gasket | No | No | No | Yes | Yes | Yes |
| 2170811 | 1x2 | Through Bezel | EMI Gasket | No | No | No | No | No | No |
| 2170806 | 1x2 | Through Bezel | EMI Springs | No | No | No | Yes | Yes | Yes |
| 2170805 | 1x2 | Through Bezel | EMI Springs | No | No | No | No | No | No |
| 2227103 | 1x2 | Behind Bezel | C | Yes | Yes | No | Yes | Yes | Yes |
| 2227103 | 1x2 | Behind Bezel | C | No | No | No | Yes | Yes | Yes |
| 2227104 | 1x2 | Behind Bezel | C | No | No | No | Open Top | | |
| 2170769 | 1x3 | Through Bezel | EMI Gasket | Yes | Yes | Yes | Yes | Yes | Yes |
| 2170740 | 1x3 | Through Bezel | EMI Springs | Yes | Yes | Yes | Yes | Yes | Yes |
| 2170739 | 1x3 | Through Bezel | EMI Springs | Yes | Yes | Yes | No | No | No |
| 2170768 | 1x3 | Through Bezel | EMI Gasket | No | No | No | Yes | Yes | Yes |
| 2170767 | 1x3 | Through Bezel | EMI Gasket | No | No | No | No | No | No |
| 2170738 | 1x3 | Through Bezel | EMI Springs | No | No | No | Yes | Yes | Yes |
| 2170737 | 1x3 | Through Bezel | EMI Springs | No | No | No | No | No | No |
| 2173239 | 1x3 | Behind Bezel | C | No | No | No | Yes | Yes | Yes |
| 2173238 | 1x3 | Behind Bezel | C | No | No | No | Open Top | | |
| 2170785 | 1x4 | Through Bezel | EMI Gasket | Yes | Yes | Yes | Yes | Yes | Yes |
| 2170784 | 1x4 | Through Bezel | EMI Gasket | Yes | Yes | Yes | No | No | No |
| 2170747 | 1x4 | Through Bezel | EMI Springs | Yes | Yes | Yes | Yes | Yes | Yes |
| 2170746 | 1x4 | Through Bezel | EMI Springs | Yes | Yes | Yes | No | No | No |

Part Number 1551920-2: zQSFP+ Surface Mount Connector for use with all 1xN cages

Notes:

C = Customer Applied Gasket
 1xN cages: require a SMT connector to complete the assembly
 2xN cages: connectors and cages come as one integrated assembly
 All cages use EMI Plug 1888810-2

zQSFP+ (QSFP28) Interconnects

Cages (con't)

| Base Part Number | Ports | Cage Applications | EMI Suppression | Lightpipes Applied Per Port | | | Heat Sinks | Applied | | |
|------------------|-------|-------------------|-----------------|-----------------------------|------|------|-------------------|---------|-----|-----|
| | | | | Single | Dual | Quad | | NET | PCI | SAN |
| 2170783 | 1x4 | Through Bezel | EMI Gasket | No | No | No | Yes | Yes | Yes | |
| 2170782 | 1x4 | Through Bezel | EMI Gasket | No | No | No | No | No | No | |
| 2170745 | 1x4 | Through Bezel | EMI Springs | No | No | No | Yes | Yes | Yes | |
| 2170744 | 1x4 | Through Bezel | EMI Springs | No | No | No | No | No | No | |
| 2227249 | 1x4 | Behind Bezel | C | No | No | No | Yes | Yes | Yes | |
| 2227250 | 1x4 | Behind Bezel | C | No | No | No | Open Top | | | |
| 2170790-1 | 1x4 | Through Bezel | EMI Springs | No | No | Yes | Custom Height | | | |
| 2170790-2 | 1x4 | Through Bezel | EMI Springs | No | No | Yes | Custom Height | | | |
| 2170790-3 | 1x4 | Through Bezel | EMI Springs | No | No | Yes | Custom Height | | | |
| 2170790-4 | 1x4 | Through Bezel | EMI Springs | No | No | Yes | Custom Height | | | |
| 2170790-5 | 1x4 | Through Bezel | EMI Springs | No | No | Yes | Custom Height | | | |
| 2170708 | 1x6 | Through Bezel | EMI Springs | Yes | Yes | Yes | Yes | Yes | Yes | |
| 2170734 | 1x6 | Through Bezel | EMI Springs | Yes | Yes | Yes | No | No | No | |
| 2170707 | 1x6 | Through Bezel | EMI Springs | No | No | No | Yes | Yes | Yes | |
| 2170706 | 1x6 | Through Bezel | EMI Springs | No | No | No | No | No | No | |
| 2198373 | 2x1 | Through Bezel | EMI Gasket | 0/1 | | | No | No | No | |
| 2227224 | 2x1 | Through Bezel | EMI Gasket | 0/1 | | | No | No | No | |
| 2287054 | 2x1 | Through Bezel | EMI Gasket | 2 | | | No | No | No | |
| 2227666 | 2x1 | Through Bezel | EMI Springs | 0/1 | | | No | No | No | |
| 2227669 | 2x1 | Through Bezel | EMI Springs | 0/1 | | | No | No | No | |
| 2227669 | 2x1 | Through Bezel | EMI Springs | 2 | | | No | No | No | |
| 2170608 | 2x1 | Through Bezel | EMI Gasket | 2** | | | Thermal Footprint | | | |
| 2214593 | 2x2 | Through Bezel | EMI Gasket | 0/1 | | | No | No | No | |
| 2227225 | 2x2 | Through Bezel | EMI Gasket | 0/1 | | | No | No | No | |
| 2287054 | 2x2 | Through Bezel | EMI Gasket | 2 | | | No | No | No | |
| 2227667 | 2x2 | Through Bezel | EMI Springs | 0/1 | | | No | No | No | |
| 2227670 | 2x2 | Through Bezel | EMI Springs | 0/1 | | | No | No | No | |
| 2289129 | 2x2 | Through Bezel | EMI Springs | 2 | | | No | No | No | |
| 2214565 | 2x3 | Through Bezel | EMI Gasket | 0/1 | | | No | No | No | |
| 2227226 | 2x3 | Through Bezel | EMI Gasket | 0/1 | | | No | No | No | |
| 2287054 | 2x3 | Through Bezel | EMI Gasket | 2 | | | No | No | No | |
| 2227668 | 2x3 | Through Bezel | EMI Springs | 0/1 | | | No | No | No | |
| 2227671 | 2x3 | Through Bezel | EMI Springs | 0/1 | | | No | No | No | |
| 2227671 | 2x3 | Through Bezel | EMI Springs | 2 | | | No | No | No | |
| 2170610 | 2x3 | Through Bezel | EMI Gasket | 1/2** | | | Thermal Footprint | | | |

Part Number 1551920-2: zQSFP+ Surface Mount Connector for use with all 1xN cages

Notes:

C = Customer Applied Gasket
 1xN cages: require a SMT connector to complete the assembly
 2xN cages: connectors and cages come as one integrated assembly
 All cages use EMI Plug 1888810-2

Accessories

| Type | Description | Part Number(s) |
|-------------------------|---|-----------------------|
| Surface Mount Connector | zQSFP+ SMT connector (For use with all 1xN cages) | 1551920-2 |
| Behind Bezel | 1x1 Heat Sink Clip | 2007304-5 |
| | 1xN Heat Sink Clip | 2227644-3, -4, -6 |
| | 1x1 Single Lightpipe | 2173481-1 |
| | 1xN Single Lightpipe | 2173482-1, -2, -3, -7 |
| Through Bezel | 1x1 Heats Sink Clip | 2007304-5 |
| | 1xN Heat Sink Clip | 2227644-3, -4, -6 |
| | 1x1 Single Lightpipe | 2170720-1 |
| | 1x1 Dual Lightpipe | 2170762-1 |
| | 1x1 Quad Lightpipe | 2170777-1 |
| | 1xN Single Lightpipe | 2170720-1 |
| | 1xN Dual Lightpipe | 2170761-1 |
| | 1xN Quad Lightpipe | 2170762-1 |

Direct Attach Copper Cable Assemblies

TE's QSFP28 passive copper cable assembly features eight differential copper pairs, providing four data transmission channels at speeds up to 28 Gbps per channel, and meets 100G Ethernet, 25G Ethernet and InfiniBand Enhanced Data Rate (EDR) requirements.

Offered in a broad range of wire gages – from 26AWG through 33AWG – this 100G copper cable assembly features low insertion loss and low cross talk. This next generation cable assembly shares the same mating interface with QSFP+ form factors, making it backward compatible with existing QSFP ports. QSFP28 can be used with current 10G and 14G applications with substantial signal integrity margin.

In addition to 100G to 100G straight cables, TE offers break out assemblies with a 100G QSFP28 module on one end breaking out to four 25G SFP28 or two 50G QSFP28 modules on the opposite end of the assembly.



Features and Benefits

- Compatible with IEEE 802.3bj, IEEE 802.3by and InfiniBand EDR
- Supports aggregate data rates of 100Gbps
- Optimized construction to minimize insertion loss and cross talk
- Customized 360° cable braid termination limits EMI radiation
- Backward compatible with existing QSFP+ connectors and cages
- Pull-to-release slide latch design
- 26AWG through 33AWG cable
- Straight and breakout assembly configurations available
- Customizable EEPROM mapping for cable signature
- RoHS compliant

| Base Part Number | Description | AWG | Dash to Length (meters) | | | | |
|------------------|-------------------------------|-----|-------------------------|-----|-----|-----|-----|
| | | | 1 | 2 | 3 | 4 | 5 |
| 2829040 | InfiniBand EDR | 33 | -2 | | | | |
| | | 30 | -4 | -6 | | | |
| | | 26 | | -7 | -8 | | |
| 2231368 | 100G Ethernet | 33 | -16 | -18 | | | |
| | | 30 | -1 | -2 | -8 | | |
| | | 28 | | | -3 | -21 | |
| | | 26 | | -14 | -7 | -4 | -12 |
| 2821033 | QSFP28 Break out to 4x SFP28 | 33 | -8 | | | | |
| | | 30 | -1 | -10 | -2 | | |
| | | 28 | | | -4 | | |
| | | 26 | | | -12 | -5 | -3 |
| 2821309 | QSFP28 Break out to 2x QSFP28 | 33 | -7 | | | | |
| | | 30 | -1 | -2 | -4 | | |
| | | 28 | | | -8 | | |
| | | 26 | | -5 | -3 | | -9 |

Contact your TE Representative for customized lengths.

Frequently Asked Questions

What data rate does zQSFP+ support?

zQSFP+ provides four data transmission channels at speeds up to 28 Gbps per channel, and meets 100G Ethernet (4x28Gbps) and InfiniBand Enhanced Data Rate (EDR) requirements.

Is TE's footprint compatible with other suppliers?

TE's behind bezel cages are not compatible with all sources. TE through bezel 1xN and stacked products are footprint compatible and dual sourced with Molex, LLC. zQSFP+ connectors and cages are designed to meet SFF-8662.

Are heat sinks available?

Yes, TE offers a generous portfolio of heat sink heights and styles, as well as custom heat sinks upon request.

Is application tooling required?

Single port cage assemblies require only flat-rock tooling, while 1xN and stacked assemblies normally require specific application tooling.

For More Information

TE Technical Support Center

| | |
|-------------------|--------------------|
| USA: | 1.800.522.6752 |
| Canada: | 1.905.475.6222 |
| Mexico: | 52.0.55.1106.0800 |
| Latin/S. America: | 54.0.11.4733.2200 |
| Germany: | 49.0.6251.133.1999 |
| UK: | 44.0.800.267666 |
| France: | 33.0.1.3420.8686 |
| Netherlands: | 31.0.73.6246.999 |
| China: | 86.0.400.820.6015 |

te.com/products/qsfp

© 2016 TE Connectivity Ltd. family of companies. All Rights Reserved.

TE Connectivity, TE Connectivity (logo) and Every Connection Counts are trademarks. zQSFP+ is a part of the ZXP* family of connectors and uses ZXP technology. ZXP is a trademark of Molex, LLC.

5-1773463-O DND 10/2016

While TE has made every reasonable effort to ensure the accuracy of the information in this brochure, TE does not guarantee that it is error-free, nor does TE make any other representation, warranty or guarantee that the information is accurate, correct, reliable or current reserves the right to make any adjustments to the information contained herein at any time without notice. TE expressly disclaims all implied warranties regarding the information contained herein, including, but not limited to, any implied warranties of merchantability or fitness for a particular purpose. The dimensions in this catalog are for reference purposes only and are subject to change without notice. Specifications are subject to change without notice. Consult TE for the latest dimensions and design specifications.