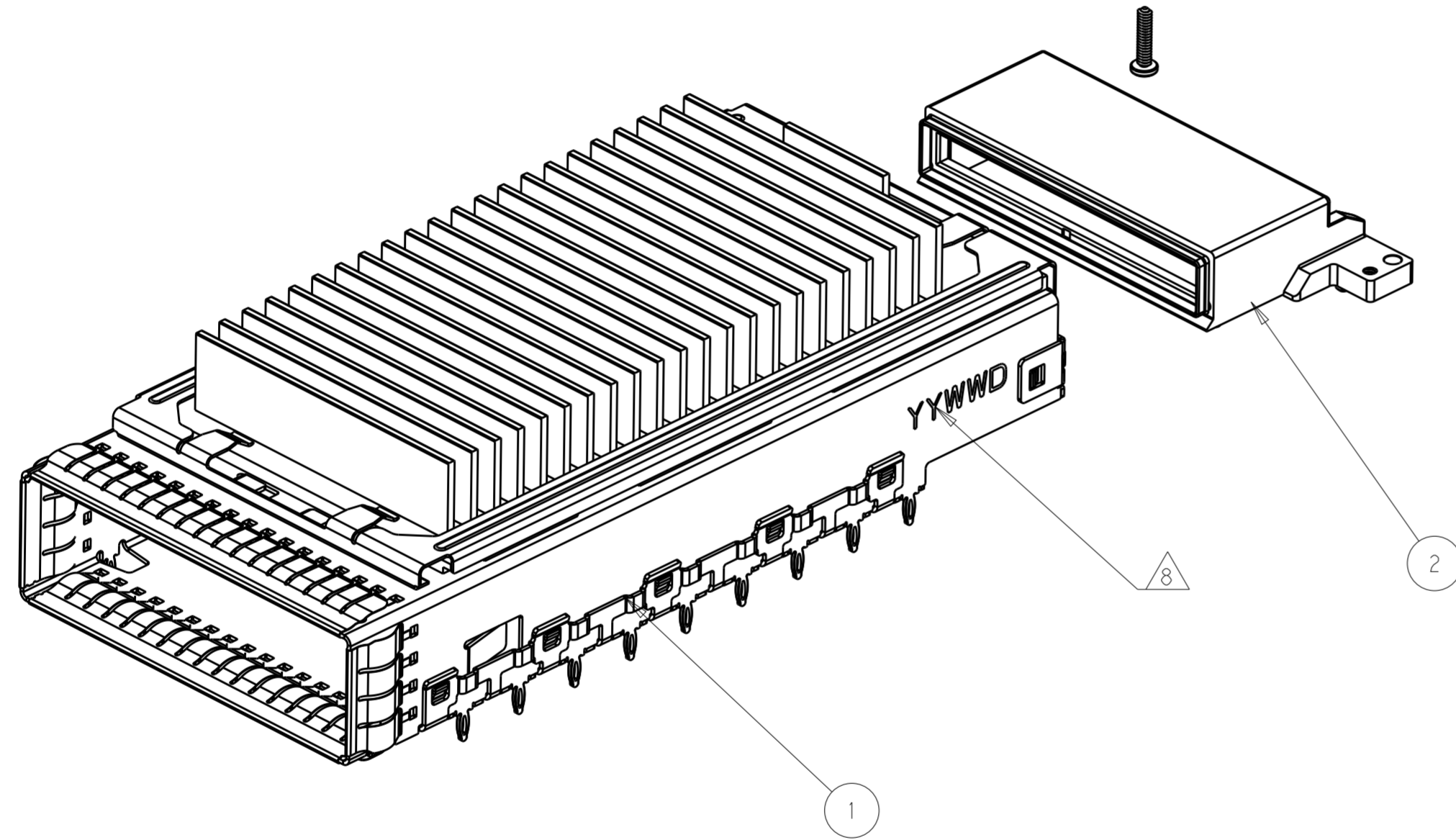


THIS DRAWING IS UNPUBLISHED. RELEASED FOR PUBLICATION 20
 © COPYRIGHT 20 BY - ALL RIGHTS RESERVED.

REVISIONS					
P	LTR	DESCRIPTION	DATE	DWN	APVD
1		PRELIMINARY DRAWING	17JUN2015	AD	SH
2		ADD NEW DASH NUMBER	19JUN2015	AD	SH
5		REVISE BOM	28UG2015	AD	SH
8		ADD NEW DASH NUMBER -3	07JUN2018	AD	SH



- 1. MATERIAL :CAGE :0.4MM THICK NICKEL SILVER ALLOY;
EMI SPRING: COPPER ALLOY;
HEAT SINK CLIP: STAINLESS STEEL;
HEAT SINK:ALUMINUM ALLOY;
RECEPTACLE COVER:ZINC ALLOY;
- 2. FINISH: EMI SPRING :1.27um NICKEL PLATING OVER ALL;
HEAT SINK:BLACK ANODIZED COATING;
RECEPTACLE COVER: 1.27um MIN NICKEL PLATING OVER COPPER PLATING;
HEAT SINK CLIP:PASSIVATE;
- 3.MATES WITH CFP MSA COMPLIANT TRANSCEIVERS.
- 4.DATUM AND BASIC DIMENSION ESTABLISHED BY CUSTOMER.
- 5.MINIMUM PC BOARD THICKNESS: SIGLE SIDE APPLICATIONS 2.0MM MIN.
BELLY TO BELLY APPLICATION:3.0MM MIN
- 6.PADS AND VIAS CHASSIS GROUND;
- 7:REFERENCE APPLICATION SOEC 114-32146 FOR
RECOMMENDED DRILL HOLE DIAMETER AND PLATING THICKNESS.
- 8.DATE CODE LOCATED AT APPROXIMATE AREA AS SHOWN.

THIS PRINT IS
PRELIMINARY
 UNQUALIFIED PRODUCT
 CONTACT PRODUCT ENGINEERING
 BEFORE USING THIS PRINT

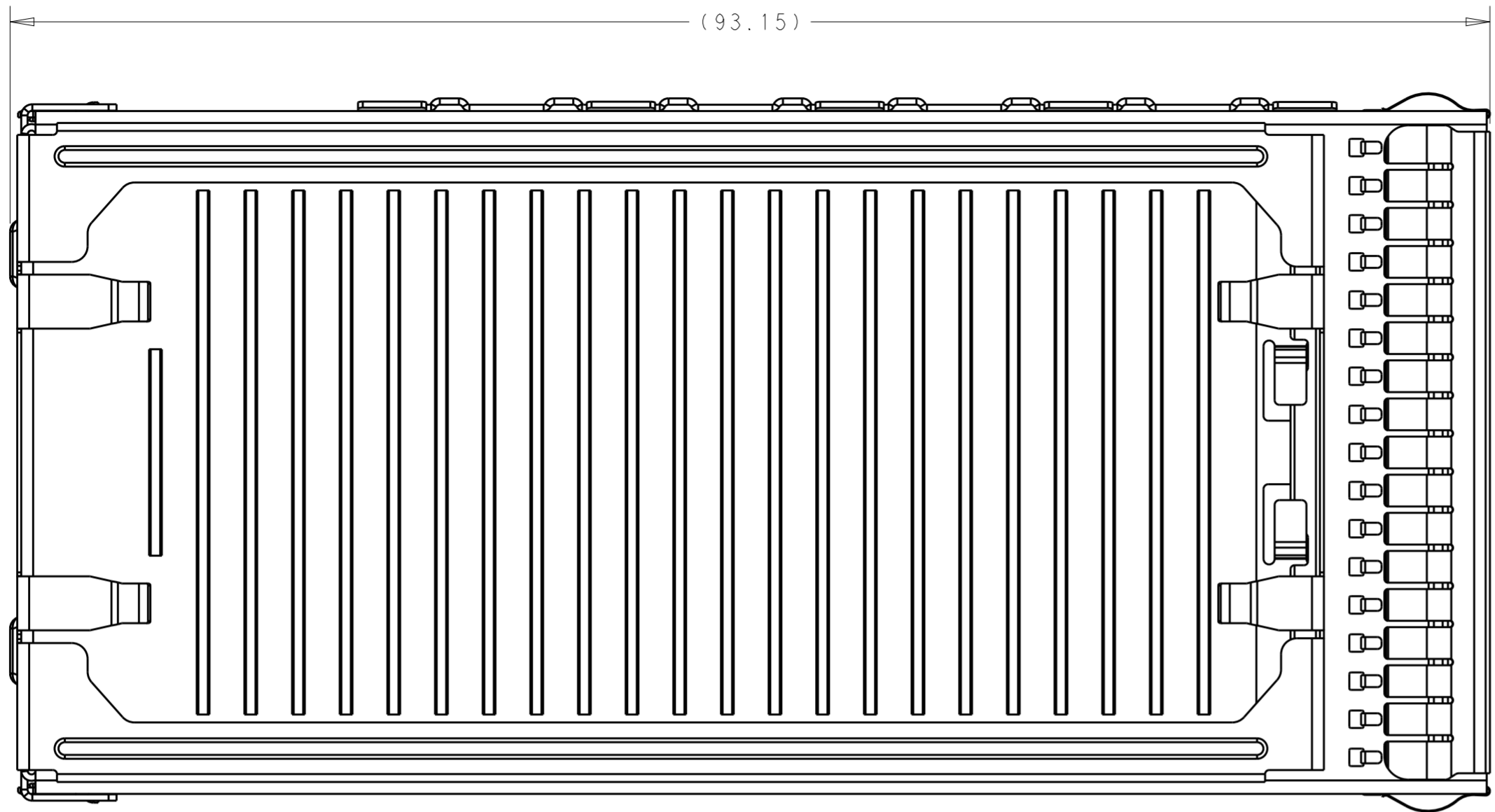
2	2	2	2292789-1	SCREW	3
1	1	1	2274846-1	RECEPTACLE COVER ASSEMBLY	2
1	-	-	2293277-6	CAGE ASSEMBLY WITH H/S,CFP2 1X1	1
-	1	-	2293277-2	CAGE ASSEMBLY WITH H/S,CFP2 1X1	
-	-	1	2293277-1	CAGE ASSEMBLY WITH H/S,CFP2 1X1	
-3	-2	-1	PAR NUMBER	DESCRIPTION	ITEM

THIS DRAWING IS A CONTROLLED DOCUMENT.

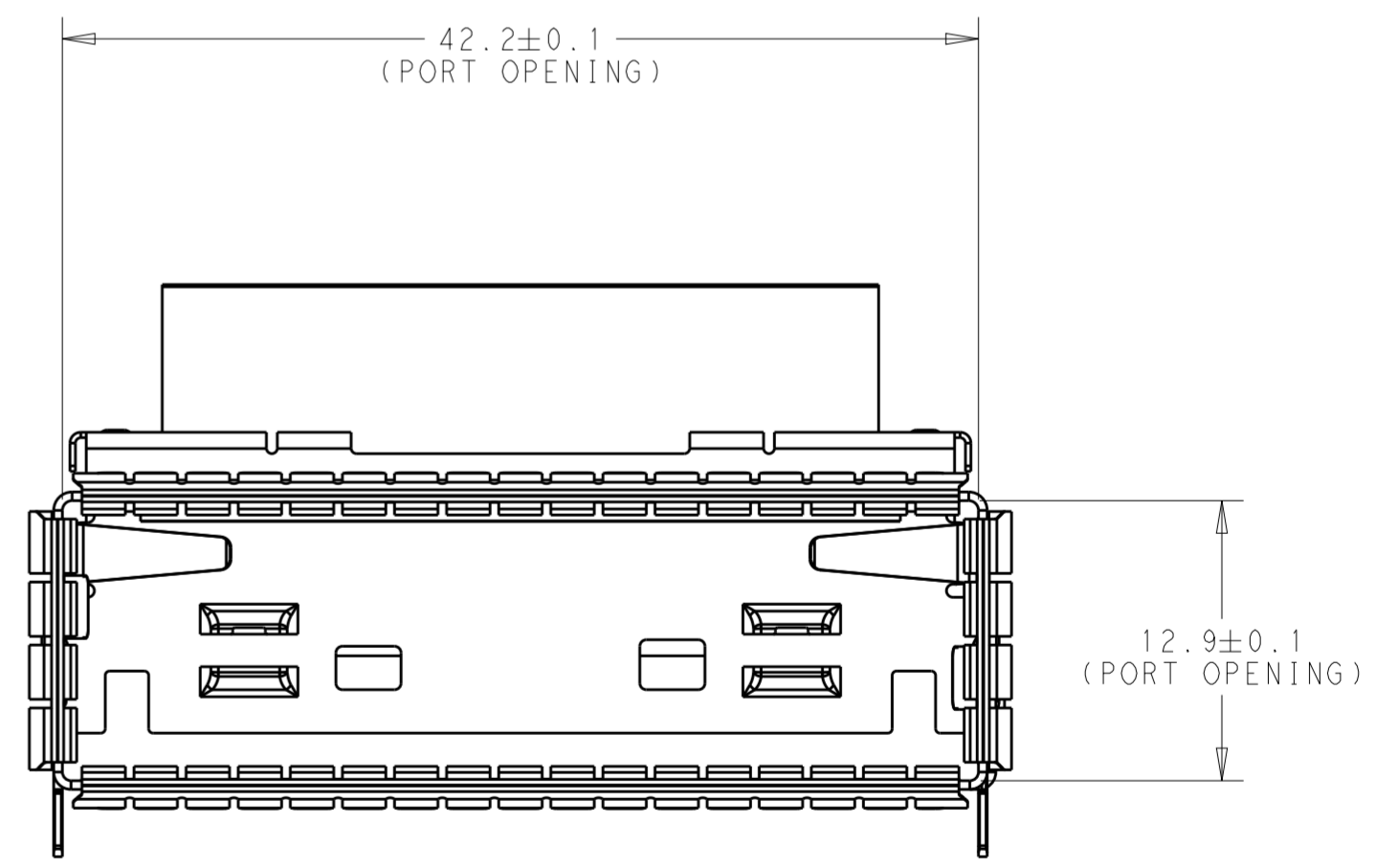
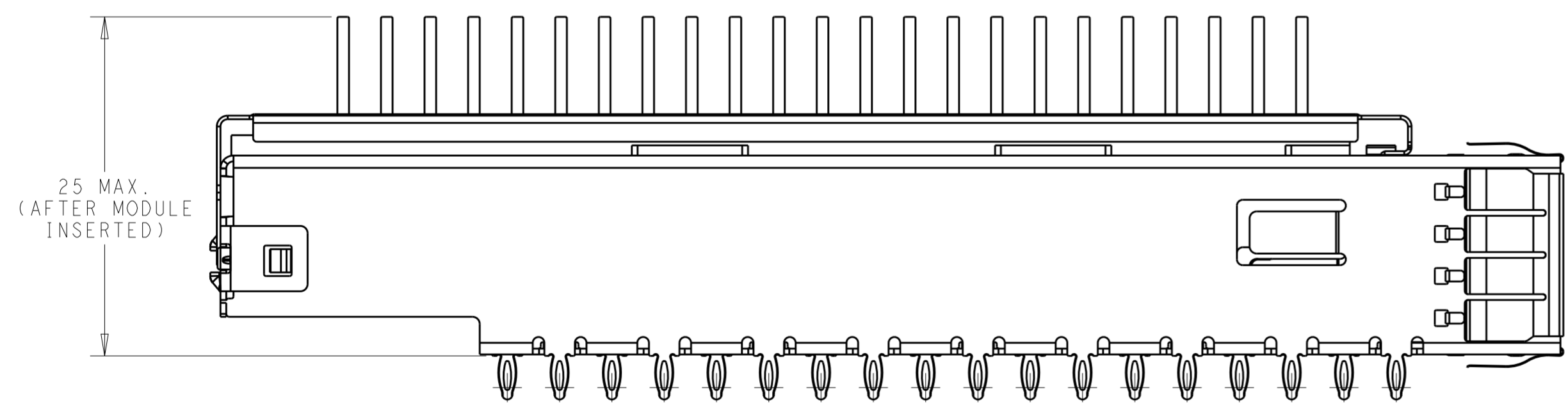
DWN ANDY.XIE 17JUN2015	 TE Connectivity
CHK -	
APVD SEAN.HAN 17JUN2015	NAME HARDWARE KIT FOR CFP2 1X1
PRODUCT SPEC 108-32103	PRESS FIT (CAGE, HS, HS CLIP, COVER, SCREW)
APPLICATION SPEC 114-32146	SIZE A2
MATERIAL SEE NOTES	CAGE CODE -
FINISH SEE NOTES	DRAWING NO C-2274842
WEIGHT -	RESTRICTED TO -
Customer Drawing	SCALE 1:1 SHEET 1 OF 7 REV 8

THIS DRAWING IS UNPUBLISHED. RELEASED FOR PUBLICATION 20
 © COPYRIGHT 20 BY - ALL RIGHTS RESERVED.


REVISIONS				
P	LTR	DESCRIPTION	DATE	APVD
-		SEE SHEET 1	-	-



THIS PRINT IS
PRELIMINARY
 UNQUALIFIED PRODUCT
 CONTACT PRODUCT ENGINEERING
 BEFORE USING THIS PRINT

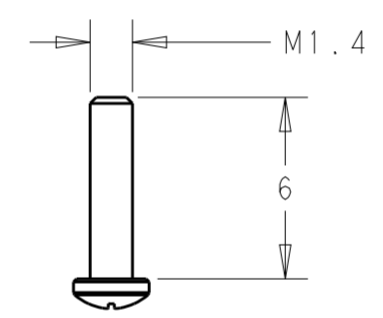
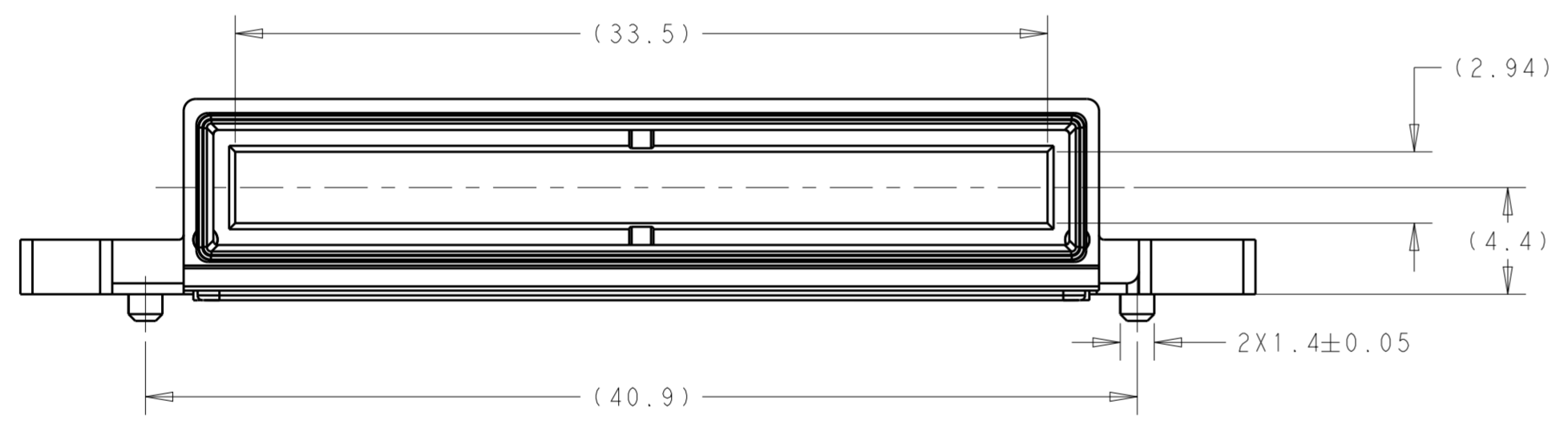
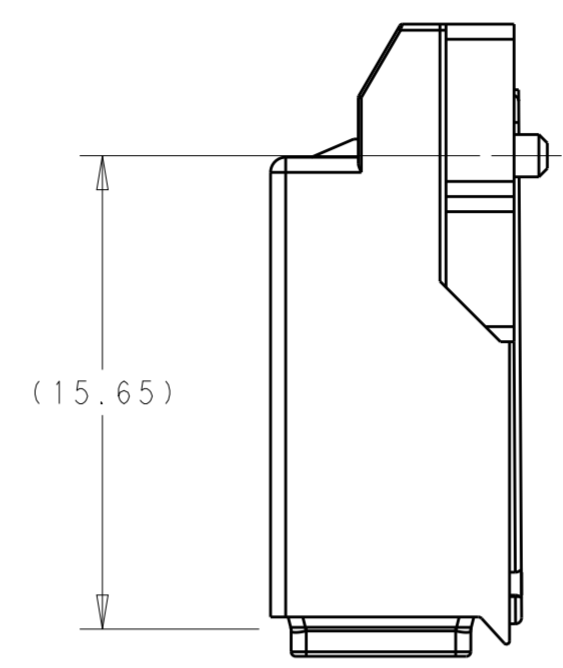
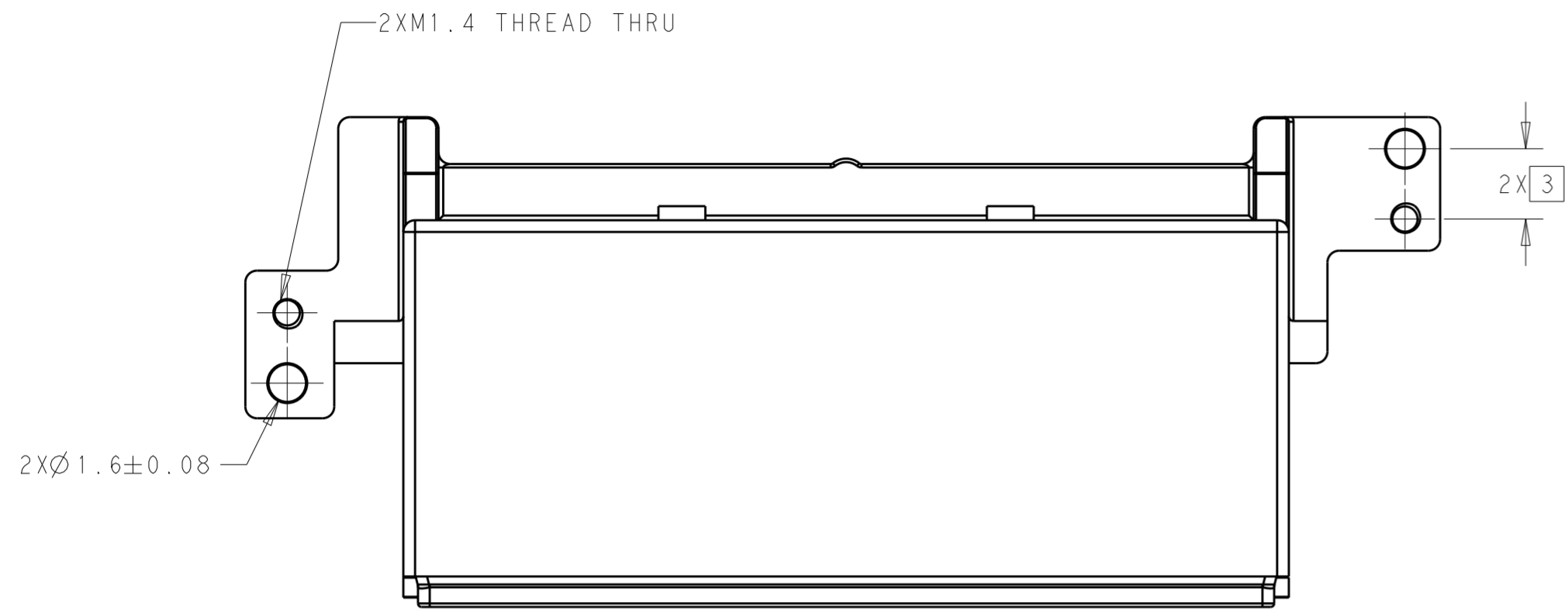


2293277-1 AS SHOWN

THIS DRAWING IS A CONTROLLED DOCUMENT.		DWN ANDY.XIE 17JUN2015	 TE Connectivity	
DIMENSIONS: mm		CHK -		
TOLERANCES UNLESS OTHERWISE SPECIFIED:		APVD SEAN.HAN 17JUN2015	NAME HARD WARE KIT FOR CFP2 1X1 PRESS FIT	
0 PLC ± 1 PLC ±0.25 2 PLC ±0.13 3 PLC ±0.1 4 PLC ±0.05 ANGLES ±1 FINISH		PRODUCT SPEC -	SIZE A2	CAGE CODE -
MATERIAL SEE NOTES		APPLICATION SPEC -	DRAWING NO G-2274842	RESTRICTED TO -
WEIGHT -		Customer Drawing	SCALE 1:1	SHEET 2 OF 7
				REV 8

THIS DRAWING IS UNPUBLISHED. RELEASED FOR PUBLICATION 20
 © COPYRIGHT 20 BY - ALL RIGHTS RESERVED.

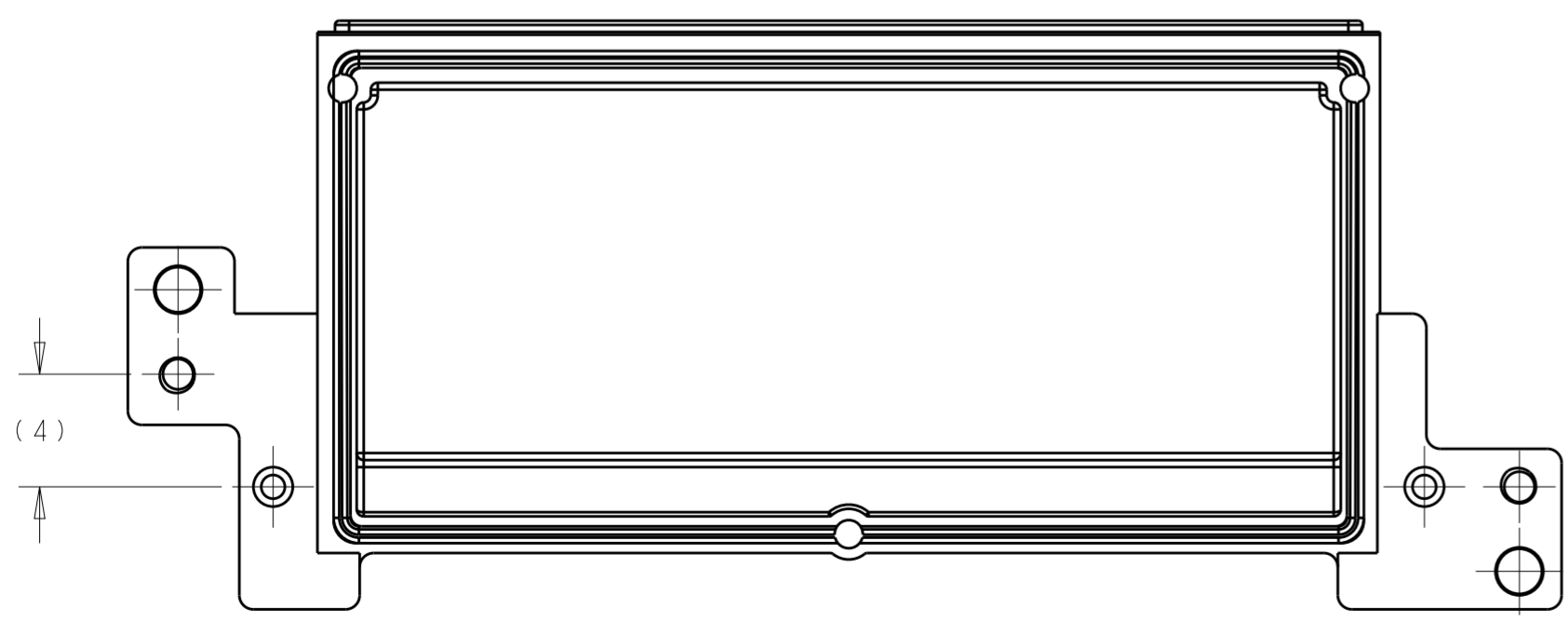
REVISIONS				
P	LTR	DESCRIPTION	DATE	APVD
-		SEE SHEET 1	-	-



M1.4 PHILIPS HEAD

SCALE 4:1

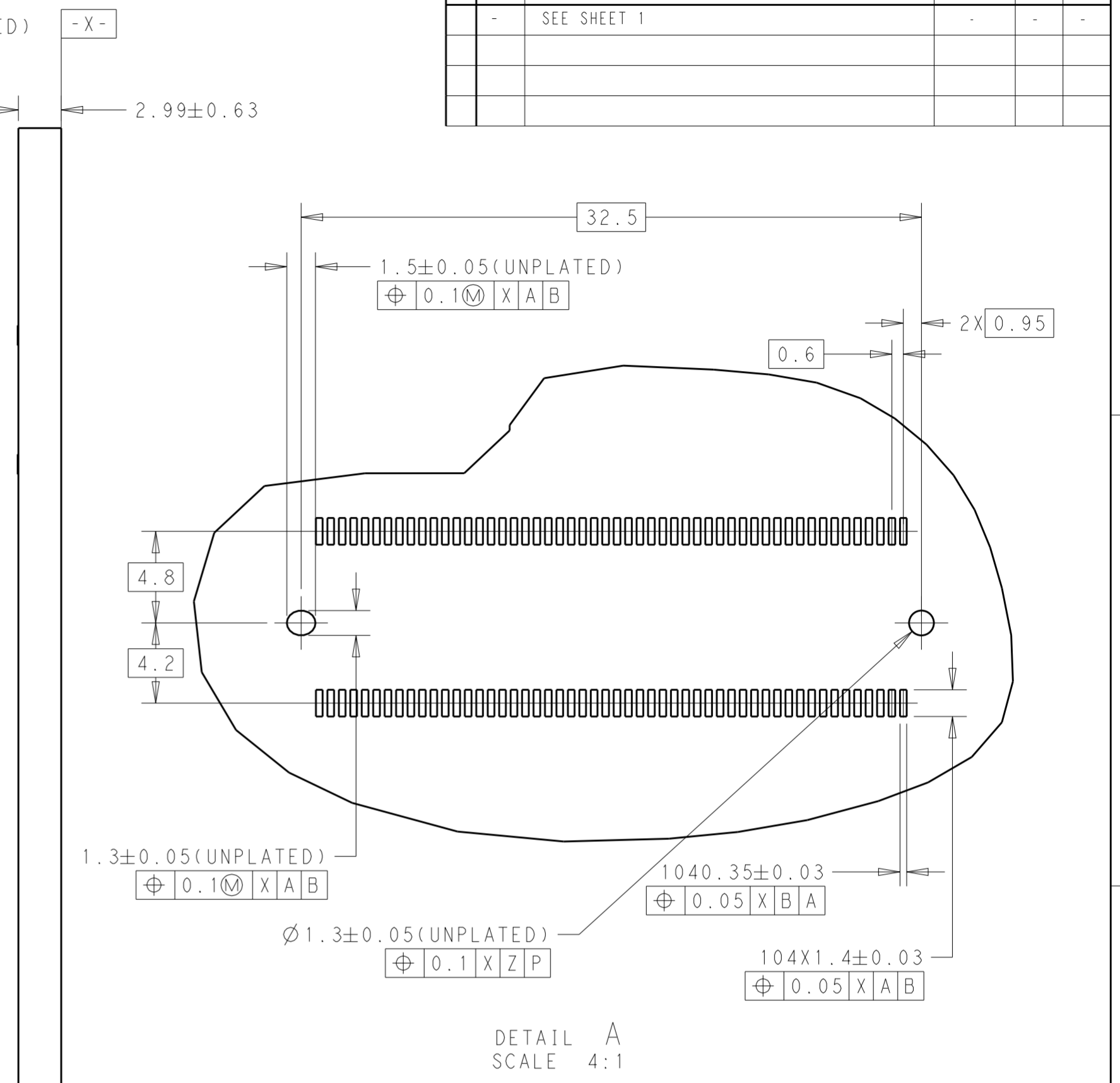
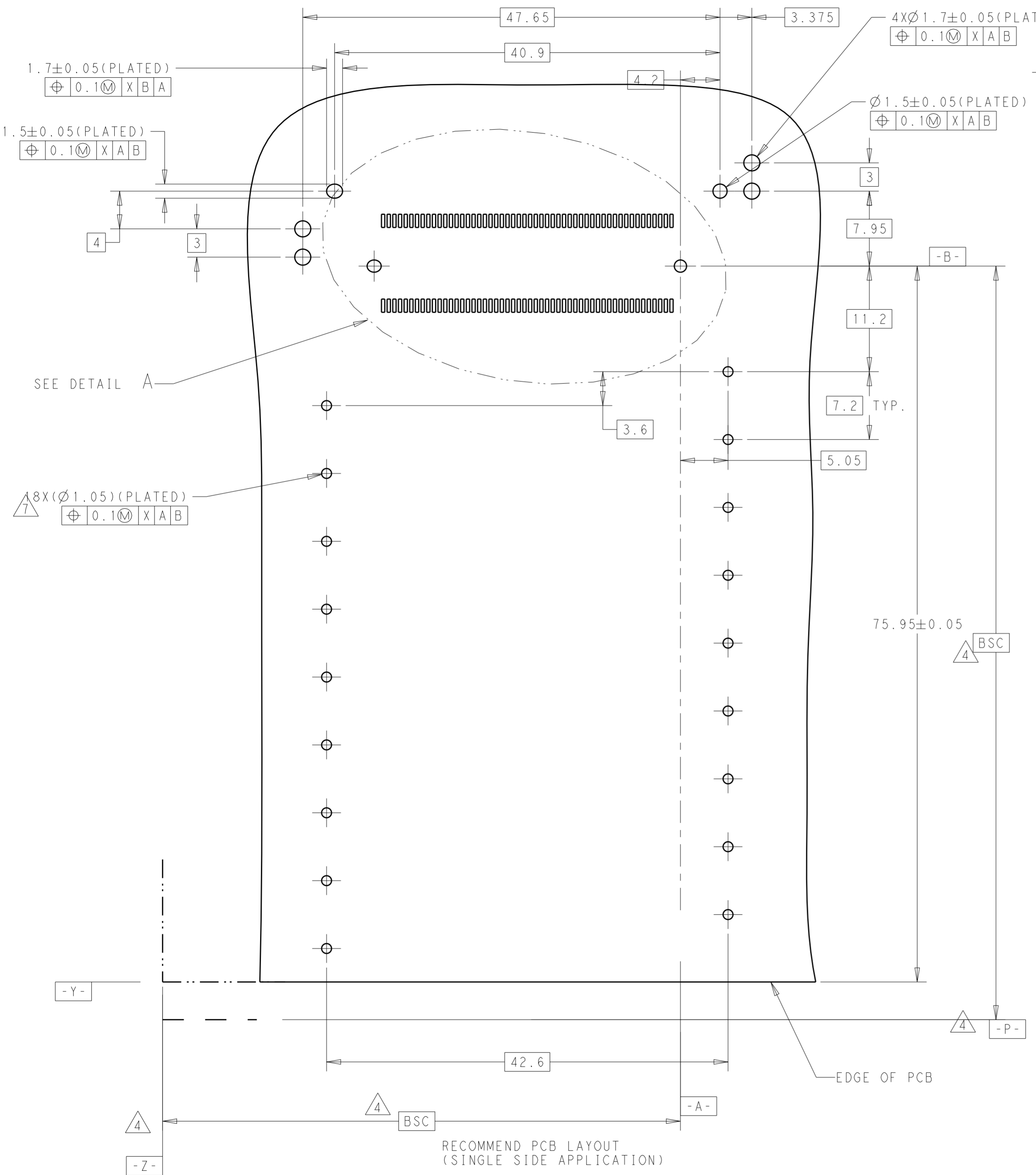
THIS PRINT IS
PRELIMINARY
 UNQUALIFIED PRODUCT
 CONTACT PRODUCT ENGINEERING
 BEFORE USING THIS PRINT



THIS DRAWING IS A CONTROLLED DOCUMENT.		DWN ANDY.XIE 17JUN2015	TE Connectivity	
DIMENSIONS: mm		CHK -		
TOLERANCES UNLESS OTHERWISE SPECIFIED:		APVD SEAN.HAN 17JUN2015	NAME HARD WARE KIT FOR CFP2 1X1 PRESS FIT	
0 PLC ± 1 PLC ±0.25 2 PLC ±0.13 3 PLC ±0.1 4 PLC ±0.05		PRODUCT SPEC -	SIZE A2	
MATERIAL SEE NOTES		APPLICATION SPEC -	CAGE CODE -	DRAWING NO. C-2274842
FINISH SEE NOTES		WEIGHT -	RESTRICTED TO -	SCALE 4:1 SHEET 4 OF 7 REV 8
Customer Drawing				

THIS DRAWING IS UNPUBLISHED. RELEASED FOR PUBLICATION 20
 © COPYRIGHT 20 BY - ALL RIGHTS RESERVED.

REVISIONS					
P	LTR	DESCRIPTION	DATE	DWN	APVD
-	-	SEE SHEET 1	-	-	-



THIS PRINT IS
PRELIMINARY
 UNQUALIFIED PRODUCT
 CONTACT PRODUCT ENGINEERING
 BEFORE USING THIS PRINT

THIS DRAWING IS A CONTROLLED DOCUMENT.		DWN ANDY.XIE 17JUN2015	TE Connectivity	
DIMENSIONS: mm		CHK -		
TOLERANCES UNLESS OTHERWISE SPECIFIED:		APVD SEAN.HAN 17JUN2015	NAME HARDWARE KIT FOR CFP2 1X1 PRESS FIT	
0 PLC ±		PRODUCT SPEC -	SIZE A2	
1 PLC ±0.25		APPLICATION SPEC -	CAGE CODE -	
2 PLC ±0.13		WEIGHT -	DRAWING NO. C-2274842	
3 PLC ±0.1		Customer Drawing	RESTRICTED TO -	
4 PLC ±0.05		SCALE 3:1	SHEET 5 OF 7	
ANGLES ±1		REV 8		
FINISH -				
MATERIAL SEE NOTES				
SEE NOTES				

THIS DRAWING IS UNPUBLISHED. RELEASED FOR PUBLICATION 20
 © COPYRIGHT 20 BY - ALL RIGHTS RESERVED.

REVISIONS				
P	LTR	DESCRIPTION	DATE	APVD
-		SEE SHEET 1	-	-

CROSS-HATCHED DENOTES COMPONENT AND TRACE KEEP-OUT AREA (EXCEPT CHASSIS GROUND) FOR NON-MAYLARTAPE APPLICATION. COMPONENTS AND TRACES ARE ONLY ALLOWED FOR APPLICATION WITH MYLAR TAPE

- Z -

74.63 MAX.

10.63 MIN

8.5

2.2

EXPOSED PLATED AND SOLDER MASK PULLED BACK (COMPONENT AND TRACE KEEPOUT AREA)

2.8 MIN

46.06

42.6 MIN

39.2

37.9

36.74

42.1

- A -

2.8 MIN

1.7 MIN

4.16

3.1

1.2

5.16

1.05

2.35

4.5

1.8

1.78

6.85

14.35


16

EDGE OF PCB

CROSS-HATCHED DENOTES COMPONENT AND TRACE KEEP-OUT AREA (EXCEPT CHASSIS GROUND)

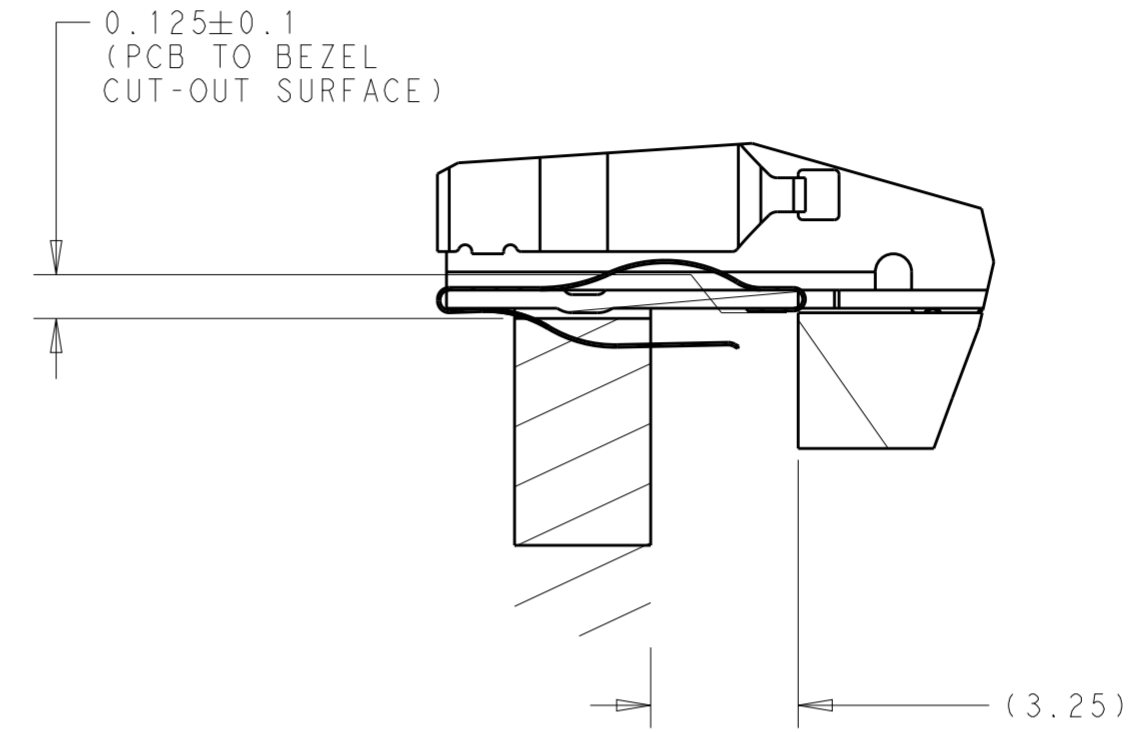
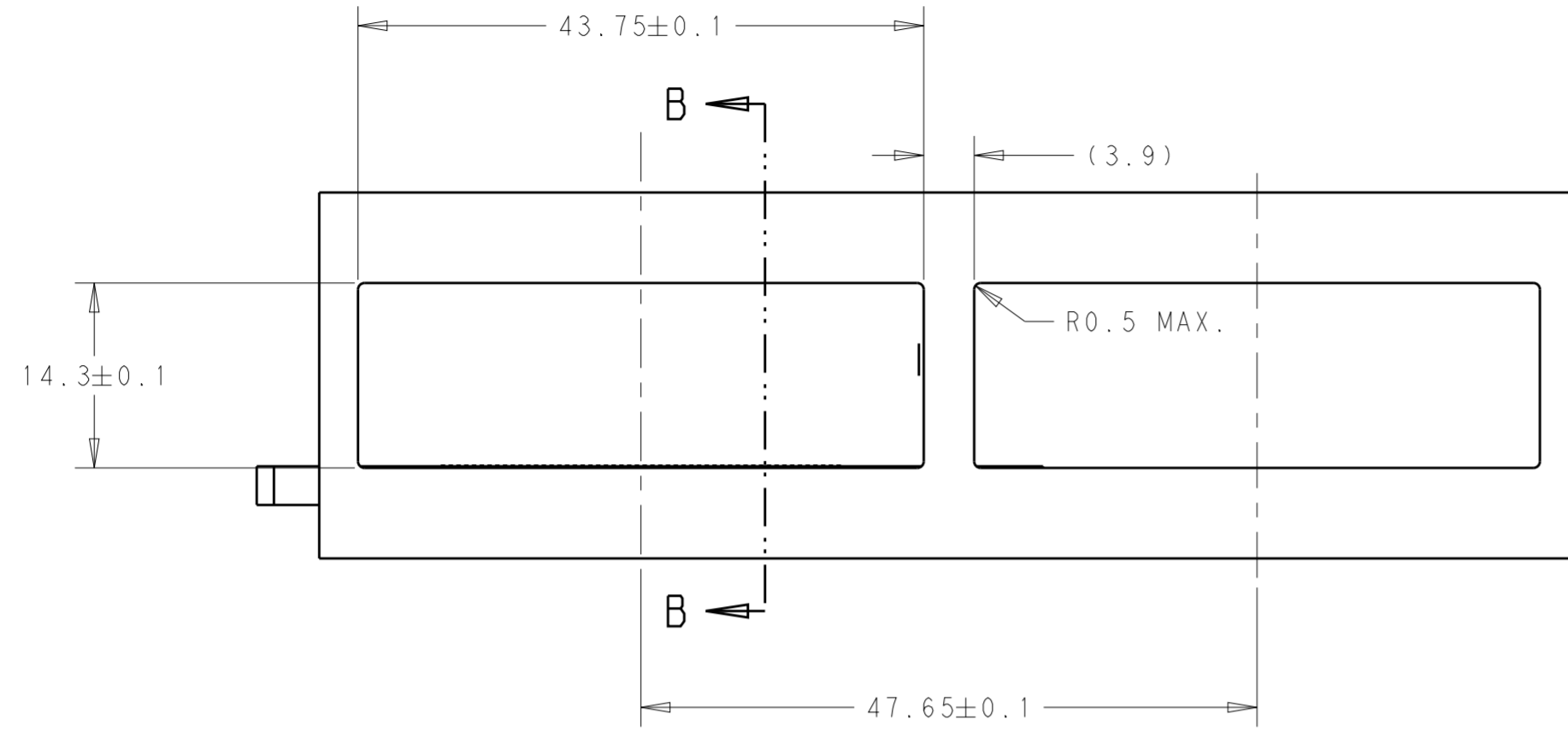
COMPONENT KEEP-OUT AREA (TRACE ALLOWED)

THIS PRINT IS
PRELIMINARY
 UNQUALIFIED PRODUCT
 CONTACT PRODUCT ENGINEERING
 BEFORE USING THIS PRINT

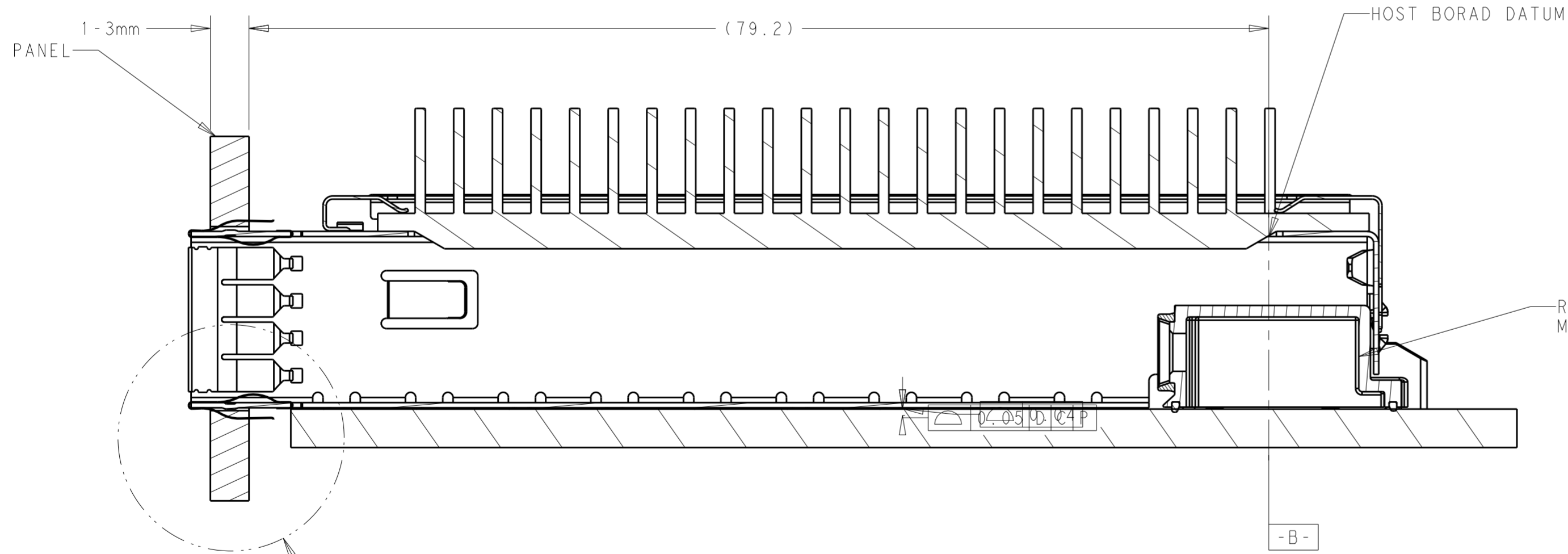
THIS DRAWING IS A CONTROLLED DOCUMENT.		DWN ANDY.XIE 17JUN2015	 TE Connectivity	
DIMENSIONS: mm		CHK -		
TOLERANCES UNLESS OTHERWISE SPECIFIED:		APVD SEAN.HAN 17JUN2015	NAME HARD WARE KIT FOR CFP2 1X1 PRESS FIT	
0 PLC ±0.10		PRODUCT SPEC -	SIZE A2	
1 PLC ±0.10		APPLICATION SPEC -	CAGE CODE -	
2 PLC ±0.10		WEIGHT -	DRAWING NO C-2274842	
3 PLC ±0.10		Customer Drawing	RESTRICTED TO -	
4 PLC ±0.05		SCALE 1:1	SHEET 6 OF 7	
ANGLES ±1		REV 8		
FINISH -				
MATERIAL SEE NOTES				
SEE NOTES				

THIS DRAWING IS UNPUBLISHED. RELEASED FOR PUBLICATION 20
 © COPYRIGHT 20 BY - ALL RIGHTS RESERVED.

REVISIONS				
P	LTR	DESCRIPTION	DATE	APVD
-	-	SEE SHEET 1	-	-



DETAIL B
SCALE 6:1



SECTION B-B
SCALE 3:1

THIS PRINT IS
PRELIMINARY
 UNQUALIFIED PRODUCT
 CONTACT PRODUCT ENGINEERING
 BEFORE USING THIS PRINT

SEE DETAIL B

THIS DRAWING IS A CONTROLLED DOCUMENT.		DWN ANDY.XIE 17JUN2015	TE Connectivity											
DIMENSIONS: mm		CHK -												
TOLERANCES UNLESS OTHERWISE SPECIFIED:		APVD SEAN.HAN 17JUN2015	NAME HARD WARE KIT FOR CFP2 1X1 PRESS FIT											
<table border="1"> <tr><td>0 PLC</td><td>±</td></tr> <tr><td>1 PLC</td><td>±0.25</td></tr> <tr><td>2 PLC</td><td>±0.13</td></tr> <tr><td>3 PLC</td><td>±0.1</td></tr> <tr><td>4 PLC</td><td>±0.05</td></tr> </table>		0 PLC	±	1 PLC	±0.25	2 PLC	±0.13	3 PLC	±0.1	4 PLC	±0.05	PRODUCT SPEC -	SIZE A2	CAGE CODE -
0 PLC	±													
1 PLC	±0.25													
2 PLC	±0.13													
3 PLC	±0.1													
4 PLC	±0.05													
MATERIAL SEE NOTES		APPLICATION SPEC -	DRAWING NO C-2274842	RESTRICTED TO -										
FINISH -		WEIGHT -	SCALE 5:1	SHEET 7 OF 7										
-		Customer Drawing	REV 8											