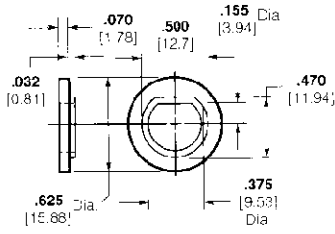


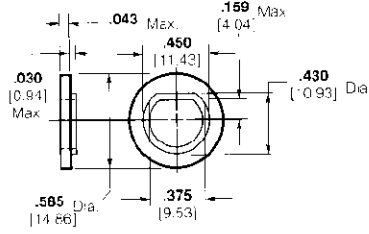
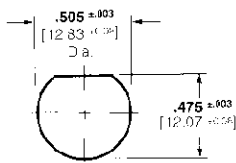
BNC Connectors, 50 Ohm (Continued)

Insulating Bushings



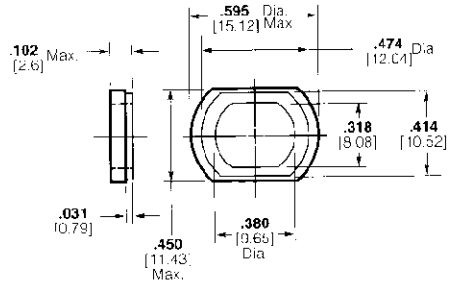
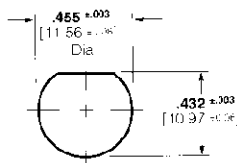
Part No. 221951-1

Recommended Panel Cutout:



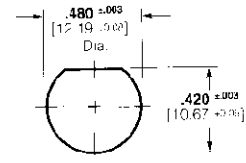
Part No. 227223-1

Recommended Panel Cutout:



Part No. 221955-1

Recommended Panel Cutout:



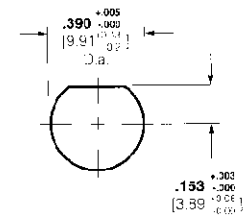
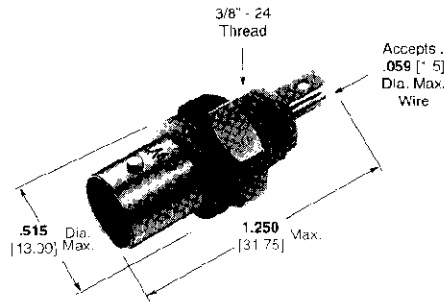
Isolated Bulkhead Solder Jacks

Plating

Body — Nickel

Center Contact — See chart

Dielectric — White VALOX



Panel Thickness: .046-.250 [1.17-6.35]

Recommended Panel Cutout

Center Contact Plating	Part No.	Flange & Thread Material
Tin	227726-1	VALOX
Silver	227726-2	VALOX
Gold	227726-3	VALOX

Plating

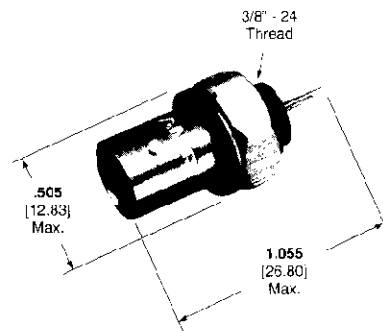
Body — Nickel

Center Contact — Gold

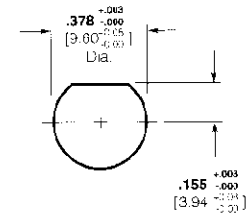
Dielectric — Black VALOX

Flange & Thread Material

Black VALOX



Part No. 414194-1



Panel Thickness: .046-.125 [1.17-3.18]

Recommended Panel Cutout

BNC Connectors