



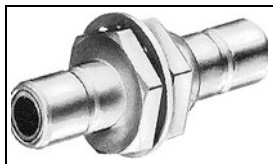
Have a Question?  
Chat with a Product  
Information Specialist

What can we help you find?

[Products](#) [Industries](#) [Resources](#) [About TE](#) [My Account](#) [Innovation](#) [Support Center](#)

**228553-1 Product Details**

[Share](#) [Print](#) [Email](#)



**228553-1**

TE Internal Number: 228553-1

Active

[View 3D PDF](#)

**SMB RF Connectors**

Always EU RoHS/ELV Compliant (Statement of Compliance)

**Product Highlights:**

- Adapter
- Adapter Type = SMB Jack to Jack Feed-Thru
- Coupler Style = Quick Connect/Disconnect
- Body Style = Straight
- Connector Impedance = 50 Ω

[View all Features](#)

**Quick Links**

- ▶ [Pricing & Availability](#)
- ▶ [Search for Tooling](#)
- ▶ [Product Feature Selector](#)
- ▶ [Contact Us About This Product](#)

[Add to My Part List](#) [Request Sample](#) [Find Similar Products](#) [Buy Product](#)

Documentation & Additional Information	
<p><b>Product Drawings:</b></p> <ul style="list-style-type: none"> <li>• <a href="#">ADAPTER,BULKHEAD,SMB</a> (PDF, English)</li> </ul> <p><b>Catalog Pages/Data Sheets:</b></p> <ul style="list-style-type: none"> <li>• <a href="#">SMB Connectors</a> (PDF, English)</li> </ul> <p><b>Product Specifications:</b></p> <ul style="list-style-type: none"> <li>• None Available</li> </ul> <p><b>Application Specifications:</b></p> <ul style="list-style-type: none"> <li>• None Available</li> </ul> <p><b>Instruction Sheets:</b></p> <ul style="list-style-type: none"> <li>• None Available</li> </ul> <p><b>CAD Files:</b> (<a href="#">CAD Format &amp; Compression Information</a>)</p> <ul style="list-style-type: none"> <li>• <a href="#">2D Drawing</a> (DXF, Version H)</li> <li>• <a href="#">3D Model</a> (IGES, Version H)</li> <li>• <a href="#">3D Model</a> (STEP, Version H)</li> </ul>	<p><b>Related Products:</b></p> <ul style="list-style-type: none"> <li>• <a href="#">Tooling</a></li> </ul>

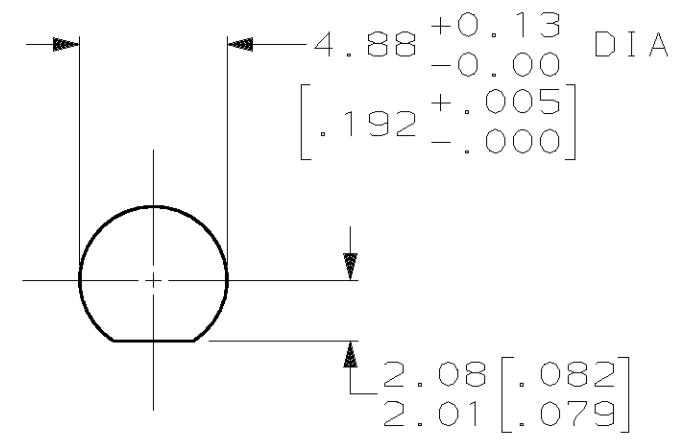
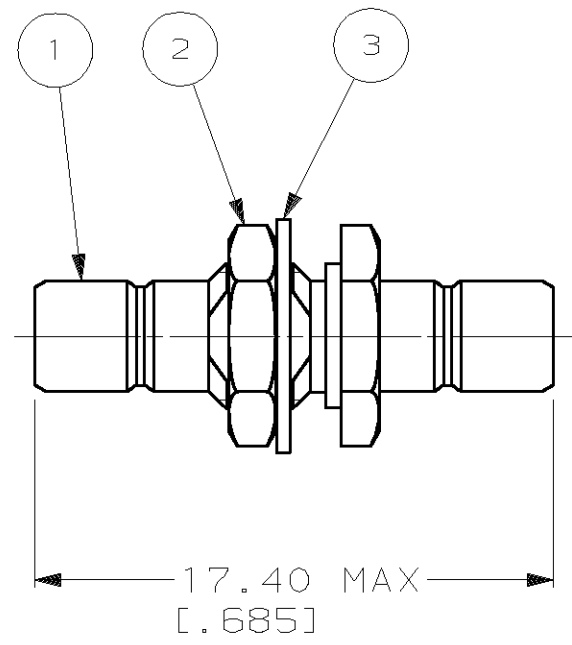
[List all Documents](#)

Product Features (Please use the Product Drawing for all design activity)	
<p><b>Product Type Features:</b></p> <ul style="list-style-type: none"> <li>• <a href="#">Product Type</a> = Adapter</li> <li>• <a href="#">Adapter Type</a> = SMB Jack to Jack Feed-Thru</li> <li>• <a href="#">Grade</a> = Mil-Type</li> <li>• <a href="#">Dielectric Material</a> = PTFE</li> </ul> <p><b>Mechanical Attachment:</b></p> <ul style="list-style-type: none"> <li>• <a href="#">Panel Mount Retention</a> = With</li> <li>• <a href="#">Panel Attachment Style</a> = Front Mount, Rear Mount</li> <li>• <a href="#">Panel Mount Retention Type</a> = Bulkhead</li> </ul> <p><b>Electrical Characteristics:</b></p> <ul style="list-style-type: none"> <li>• <a href="#">Connector Impedance (Ω)</a> = 50</li> </ul> <p><b>Dimensions:</b></p> <ul style="list-style-type: none"> <li>• <a href="#">Panel Thickness</a> (mm [in]) = 2.36 [0.093]</li> </ul> <p><b>Body Features:</b></p> <ul style="list-style-type: none"> <li>• <a href="#">Coupler Style</a> = Quick Connect/Disconnect</li> <li>• <a href="#">Body Style</a> = Straight</li> <li>• <a href="#">Pin Protection</a> = Without</li> <li>• <a href="#">Body Plating</a> = Nickel</li> </ul>	<p><b>Contact Features:</b></p> <ul style="list-style-type: none"> <li>• <a href="#">Center Contact Plating</a> = Gold</li> </ul> <p><b>Configuration Features:</b></p> <ul style="list-style-type: none"> <li>• <a href="#">Preloaded</a> = Yes</li> <li>• <a href="#">Environmental Protection</a> = Without</li> </ul> <p><b>Industry Standards:</b></p> <ul style="list-style-type: none"> <li>• <a href="#">RoHS/ELV Compliance</a> = RoHS compliant, ELV compliant</li> <li>• <a href="#">Lead Free Solder Processes</a> = Not relevant for lead free process</li> <li>• <a href="#">RoHS/ELV Compliance History</a> = Always was RoHS compliant</li> </ul> <p><b>Other:</b></p> <ul style="list-style-type: none"> <li>• <a href="#">Brand</a> = AMP</li> </ul>

THIS DRAWING IS UNPUBLISHED. RELEASED FOR PUBLICATION

© COPYRIGHT ALL INTERNATIONAL RIGHTS RESERVED.

LOC	DIST	P	F	REVISIONS			DATE	APPD
AJ	16			ZONE	LTR	DESCRIPTION		
						H1 REVISED PER ECO-11-005294	11APR11	HMR



SUGGESTED PANEL CUT-OUT

SUPSD BY 228553-1	415001-2	414969-2	228569-2	228553-2
	415001-2	414969-2	228569-1	228553-1
③ LOCKWASHER QTY=1	② JAM NUT QTY=1	① BULKHEAD ASSEMBLY QTY=1	PART NO	

DO NOT SCALE PRINT. UNLESS SPECIFIED DIMENSIONS IN mm [INCHES] TOLERANCES ON: 2 PLC DEC ± - 3 PLC DEC ± .008 ANGLES ± -	DR	<i>K. Heilig</i>	6/11/92				
	CHK	G. MICHAEL	7/8/92				
	MATERIAL	APPD	G. MICHAEL	7/8/92	NAME ADAPTER, BULKHEAD, SMB		
		APPD	K. HEILIG	7/13/92			
FINISH	PRODUCT SPEC	-		SIZE	CAGE CODE	DRAWING NO	
	APPLICATION SPEC	-		B	00779	228553	
	WEIGHT	-		SCALE	4:1	SHEET	1 OF 1