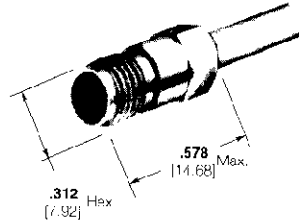


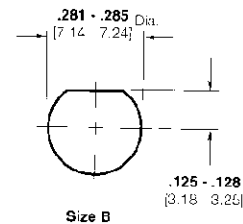
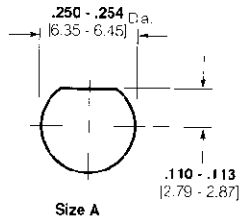
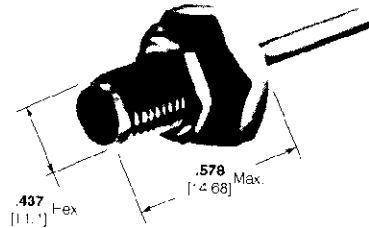
SMA Connectors for Semi-Rigid Cable (Continued)

Jacks and Bulkhead Jacks, Compression Crimp

Materials and Finishes
(See page 106)



Bulkhead Jack



Panel Thickness .055 - .103 [1.4 - 2.62]

Recommended Panel Cutouts

SMA Connectors for Semi-Rigid and Flexible Cable

Connector Cable Range Selection Code ¹	RG/U Cable	Connector Configuration	Frequency Max.	Body Finish	Connector Part Numbers*				Tooling Part Numbers				
					Part No.	Category B		Category F		Hand Tool Kit No. 59981-1		Pneumatic Tool No. 58318-1	
						M39012/Military No.	AMP Part No.	M39012/Military No.	AMP Part No.	Die Set (M22520/)	Locator (M22520/)	Die Set*	Locator
O	402 Semi-Rigid/ .141 [3.58]	Jack	18 GHz	Passivated	—	81B3004	227744-1	81-3208	228636-1	312253-1 (36-03)	220222-2 (36-05)	313720-1	308075-2
				Gold Plated	228636-2	—	—	—	—	—	—	—	—
	Bulkhead Jack	18 GHz	Passivated	227746-3**	83B3004	227746-1	83-3208	228638-1	312253-1 (36-03)	220222-2 (36-05)	313720-1	308075-2	
			Gold Plated	228638-2	—	—	—	—	—	—	—	—	—
P	406 Semi-Rigid/ .086 [2.19]	Jack	18 GHz	Passivated	—	81F3003	227869-1	81-3207	228640-1	312253-2 (36-02)	220222-2 (36-05)	313719-1	308075-2
				Gold Plated	228640-2	—	—	—	—	—	—	—	—
	Bulkhead Jack	18 GHz	Passivated	227871-3**	83B3003	227871-1	83-3207	228642-1	312253-2 (36-02)	220222-2 (36-05)	313719-1	308075-2	
			Gold Plated	228642-2	—	—	—	—	—	—	—	—	—

¹Refer to pages 14 and 15 for code specifications.

*Consult latest issue of MIL-C-39012 and QPL for current military dash numbers.

**Use Recommended Panel Cutout Size A, All other Bulkhead Jacks use Recommended Panel Cutout Size B.

³Not included with Pneumatic Tool No. 58318-1; must be purchased separately.