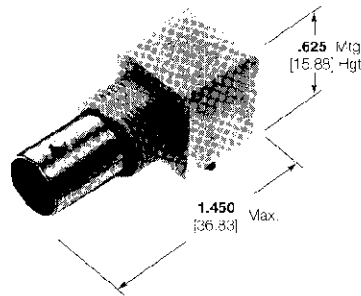


## Twin BNC Connectors (Continued)

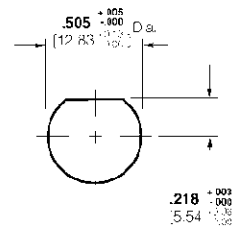
### Right-Angle PC Board/ Panel Mount Jacks

#### Material

Body — VALOX, White

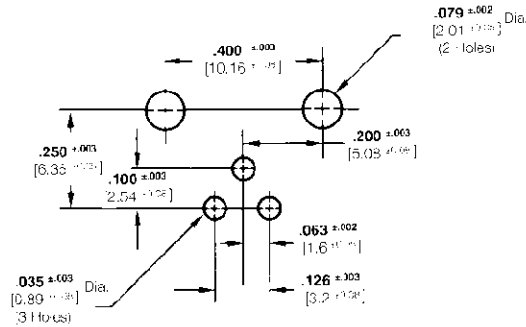


With Mounting Posts  
Part No. 228686-1



Maximum Panel Thickness .240 [6.1]

Recommended Panel Cutout

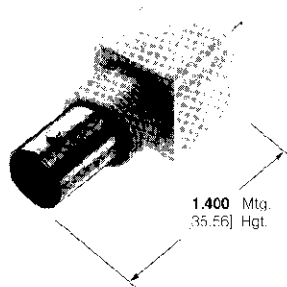


Recommended PC Board Layout

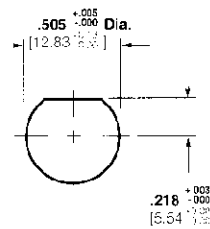
### Vertical PC Board/ Panel Mount Jacks

#### Material

Body — VALOX, White

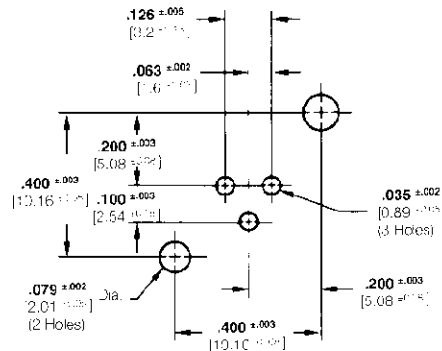


With Mounting Posts  
Part No. 221198-1



Maximum Panel Thickness .240 [6.1]

Recommended Panel Cutout



Recommended PC Board Layout

### Lockwasher and Jam Nut



Part No.  
1-329632-2



Part No.  
1-329631-2