

CFP2 & CFP4 PLUGGABLE I/O CONNECTORS & CAGES

CFP2 and CFP4 interconnects transfer data 2.8 times faster than current CFP products, achieving 28 Gbps per lane for >100 Gbps Ethernet (and other protocols) in a high density, 0.6mm contact pitch. TE Connectivity's (TE) CFP2 and CFP4 connectors provide excellent signal integrity and feature a ruggedized cage construction for a more robust solution than the competition, helping ensure reliable connections. With one of the largest CFP2 and CFP4 portfolios, TE offers many flexible design options to meet your needs.

Applications

- Carrier Networks and Datacenters
- Large datacenter campus connectivity
- Metro area networks
- Mid- to long-reach, high capacity, multi-100 Gbps links

CFP2 & CFP4 PLUGGABLE I/O CONNECTORS & CAGES

Part Number Information

CFP2

Description	TE Part Number
Receptacle Connector	2274845-1
1x1 Receptacle Cover	2274846-1
1x1 Cage Assembly	2274843-1
1x2 Receptacle Cover	2287077-1
1x2 Cage Assembly	2287076-1
Heatsink (side-to-side airflow)	2288219-1
Heatsink (front-to-back airflow)	2288218-1
Heatsink Clip	2288220-1
EMI/Dust Plug	2288221-1
1x1 Hardware Kit (w/side-to-side airflow heatsink)	2274842-1
1x1 Hardware Kit (w/front-to-back airflow heatsink)	2274842-2
1x2 Hardware Kit (w/side-to-side airflow heatsinks)	2287075-1
1x2 Hardware Kit (w/front-to-back airflow heatsinks)	2287075-2

CFP4

Description	TE Part Number
Receptacle Connector	2288229-1
1x1 Receptacle Cover	2288228-1
1x1 Cage Assembly	2288227-1
1x4 Receptacle Cover	2289498-1
1x4 Cage Assembly	2289496-1
Heatsink (side-to-side airflow)	2289501-1
Heatsink (front-to-back airflow)	2288231-1
Heatsink Clip	2289502-1
EMI/Dust Plug	2288221-3
1x1 Hardware Kit (w/side-to-side airflow heatsink)	2288226-1
1x1 Hardware Kit (w/front-to-back airflow heatsink)	2288226-2
1x4 Hardware Kit (w/side-to-side airflow heatsink)	2289497-1
1x4 Hardware Kit (w/front-to-back airflow heatsink)	2289497-2

Hardware kits include: cage assembly, receptacle cover, heatsink(s), heatsink clip(s) and screws.

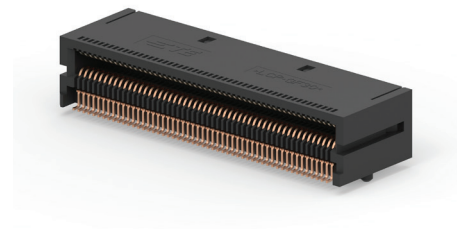
te.com

TE Connectivity, TE, TE Connectivity (logo) and Every Connection Counts are trademarks. All other logos, products and/or company names referred to herein might be trademarks of their respective owners.

The information given herein, including drawings, illustrations and schematics which are intended for illustration purposes only, is believed to be reliable. However, TE Connectivity makes no warranties as to its accuracy or completeness and disclaims any liability in connection with its use. TE Connectivity's obligations shall only be as set forth in TE Connectivity's Standard Terms and Conditions of Sale for this product and in no case will TE Connectivity be liable for any incidental, indirect or consequential damages arising out of the sale, resale, use or misuse of the product. Users of TE Connectivity products should make their own evaluation to determine the suitability of each such product for the specific application.

©2017 TE Connectivity Ltd. family of companies. All Rights Reserved.

1-1773867-7 03/17 DND



CFP2 receptacle connector

Key Features

- Up to 28 Gbps per lane; 100 Gbps per port
- Up to 4x data rate per 19" line card vs CFP
- Up to 60% lower power consumption vs CFP
- 0.6mm pitch SMT receptacle connectors
- Pin counts:
 - CFP2: 104 pins
 - CFP4: 56 pins
- Ganged configurations available:
 - 1x1 and 1x2 cages for CFP2
 - 1x1 and 1x4 cages for CFP4
- Supports single-sided and belly-to-belly mounting
- Designed to the CFP2 & CFP4 MSA standards (www.cfp-msa.org)
- Meets CEI-28G-VSR requirements defined by OIF for 28 Gbps
- Optional riding heatsink ensures proper thermal dissipation

Contact your TE representative for more information

TE Technical Support Center

USA:	1.800.522.6752
Canada:	1.905.475.6222
Mexico:	52.0.55.1106.0800
Latin/S. America:	54.0.11.4733.2200
Germany:	49.0.6251.133.1999
UK:	44.0.800.267666
France:	33.0.1.3420.8686
Netherlands:	31.0.73.6246.999
China:	86.0.400.820.6015