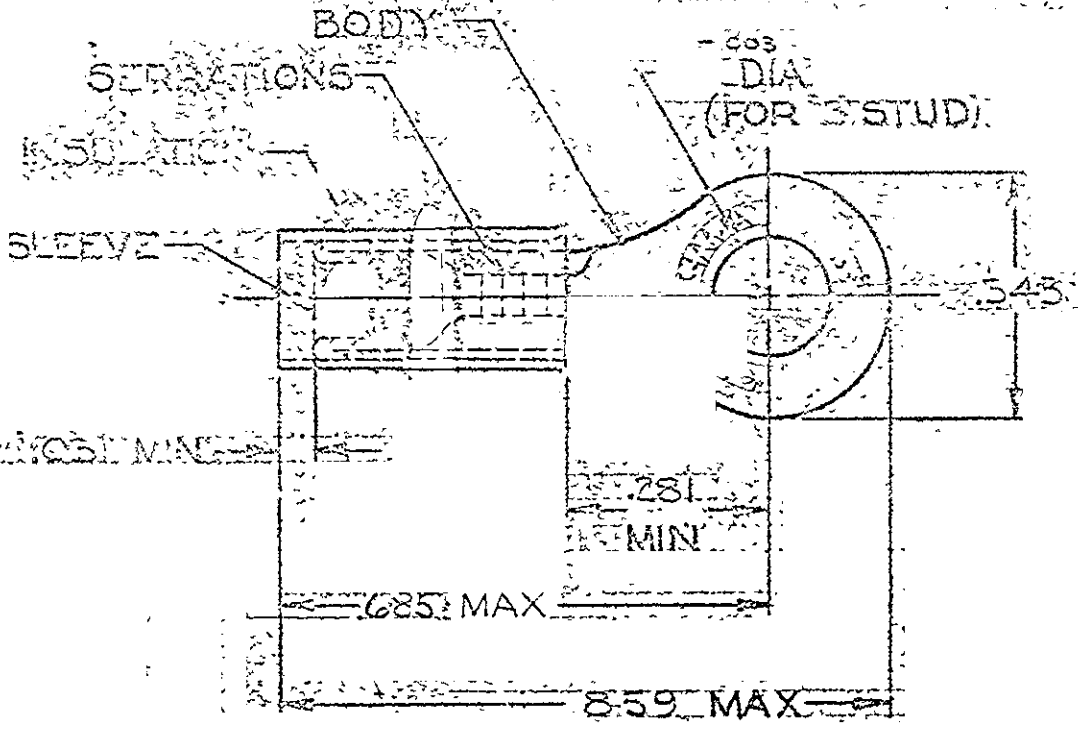


DRAWING MADE IN AMERICAN PROJECTION

© 1957 BY AMP INC. ALL RIGHTS RESERVED. AMP PRODUCTS COVERED BY PATENTS AND/OR PATENTS PENDING.

REVISIONS			
LTN	DESCRIPTION	DATE	APPROVED
C	REDRAWING ADDED TAPERING	5-2-69	THW
D	REV. SERIAL NO. 15E-630	3-1-70	FCY
E	REVISED 15E-621	5-23-73	THW
F	REV/0720-0056-93	3-30-93	TS/me



FOR .105 TO .150 WIRE INSULATION DIA  
TONGUE MATERIAL THK = .003

NOTE:  
STAMPING MAY BE ON TOP OR BOTTOM

100	LOOSE PC BOX	8-320560-1	
1	320560 ON TAPE	2-320560	BODY SLEEVE COPPER (QQ-C-576)
1	U WIRE TERMINAL	320560	TIN PL (MIL-T-10727)
			INSULATION SLOE NYLON (MIL-M-20693) TYPE I
QTY	DESCRIPTION	PART NO.	MATERIAL & FINISH
UNLESS OTHERWISE SPECIFIED DIMENSIONS ARE IN INCHES TOLERANCES ON DECIMALS ± .005 ANGLES		CONTRACT NO.	AMP INCORPORATED HARRISBURG, PENNSYLVANIA
MATERIAL		DATE 3-1-69	NAME WIRE TERMINAL
SEE TAG		APPD. [Signature]	P.T.D.G-RING TONGUE
		REL. [Signature]	WIRE SIZE: 16-14
		DESCR APPD.	SIZE & CODE IDENT. NO. NUMBER
		OTHER APPD.	320560
			00779
			320560
			100779
			320560