

2-330808-8 Product Details

[Share](#) [Print](#) [Email](#)



2-330808-8

TE Internal Number: 2-330808-8

Active

[View 3D PDF](#)

Discrete Sockets

Always EU RoHS/ELV Compliant
(Statement of Compliance)

Product Highlights:

- Mini-Spring Socket Product Line
- Board-to-Board, Wire-to-Board
- Applies To Wire/Cable, Applies To Printed Circuit Board
- Contact - Rated Current = 5 A
- Wire/Cable Size = .081 - .162 mm²

[View all Features](#)

Quick Links

- ▶ [Pricing & Availability](#)
- ▶ [Search for Tooling](#)
- ▶ [Product Feature Selector](#)
- ▶ [Contact Us About This Product](#)

[Add to My Part List](#) [Request Sample](#) [Find Similar Products](#)
[Buy Product](#)

Documentation & Additional Information

Product Drawings:

- [MINIATURE SPRING SOCKET ASSEMBLY](#) (PDF, English)

Catalog Pages/Data Sheets:

- None Available

Product Specifications:

- None Available

Application Specifications:

- [Miniature Spring Socket Contacts](#) (PDF, English)

Instruction Sheets:

- None Available

CAD Files: (CAD Format & Compression Information)

- [2D Drawing](#) (DXF, Version CB2)
- [3D Model](#) (IGES, Version CB2)
- [3D Model](#) (STEP, Version CB2)

[List all Documents](#)

Additional Information:

- [Product Line Information](#)

Related Products:

- [Tooling](#)

Product Features (Please use the Product Drawing for all design activity)

Product Type Features:

- Product Line = Mini-Spring Socket
- [Sleeve Style](#) = Closed Bottom
- [Sealant](#) = Without
- Wire/Cable Type = Discrete Wire
- Product Series = 3
- Profile = Zero

Electrical Characteristics:

- Contact - Rated Current (A) = 5

Termination Features:

- Wire/Cable Size (mm²) = 0.081 - 0.162
- Wire/Cable Size (AWG) = 25 - 28
- [Insertion Method](#) = Hand/Semi-Automatic
- Termination Method to Wire/Cable = Solder
- Termination Method to PC Board = Through Hole - Press Fit

Contact Features:

- [Contact Spring Plating](#) = Gold (30)
- Contact Plating, Mating Area, Material = Gold (30)
- Contact Plating, Mating Area, Thickness (µm [µin]) = 0.00076 [0.03]
- Contact Type = Socket
- Contact Base Material = Beryllium Copper

Industry Standards:

- Government/Industry Qualification = No
- [RoHS/ELV Compliance](#) = RoHS compliant, ELV compliant
- [Lead Free Solder Processes](#) = Wave solder capable to 260°C, Wave solder capable to 240°C, Wave solder capable to 265°C, Reflow solder capable to 245°C, Reflow solder capable to 260°C, Pin-in-Paste capable to 245°C, Pin-in-Paste capable to 260°C
- RoHS/ELV Compliance History = Always was RoHS

<p>Dimensions:</p> <ul style="list-style-type: none"> • Socket Length (mm [in]) = 3.61 [0.142] • Recommended Hole Size (mm [in]) = 1.04 [0.041] • PCB Thickness, Recommended (mm [in]) = 0.79 – 3.18 [0.031 – 0.125] <p>Body Features:</p> <ul style="list-style-type: none"> • Mating Pin Dia. Range (mm [in]) = 0.33 – 0.51 [0.013 – 0.020] • Sleeve Material Plating = Gold Flash over Nickel • Wire Type = Solid • Sleeve Material = Copper • Spring Material = Beryllium Copper 	<p>compliant</p> <p>Environmental:</p> <ul style="list-style-type: none"> • Operating Temperature (°C [°F]) = -65 – +126 [-85 – +258] <p>Conditions for Usage:</p> <ul style="list-style-type: none"> • Applies To = Wire/Cable, Printed Circuit Board <p>Operation/Application:</p> <ul style="list-style-type: none"> • Application Use = Board-to-Board, Wire-to-Board • Contact Transmits (Typical Application) = Signal (Data)/Power • Application = Production <p>Packaging Features:</p> <ul style="list-style-type: none"> • Packaging Method = Loose Piece • Packaging Quantity = 2,000/Bag <p>Other:</p> <ul style="list-style-type: none"> • Brand = AMP
--	--

Corporate Information

- [About TE](#)
- [Investors](#)
- [News Room](#)
- [Supplier Portal](#)
- [Careers](#)
- [Terms & Conditions](#)
- [Privacy Policy](#)
- [AODA Accessibility Policy](#)
- [AODA Multi-Year Accessibility Plan](#)

Quick Links

- [Distributor Inventory](#)
- [Product Cross Reference](#)
- [Documents & Drawings](#)
- [Product Compliance Support Center](#)
- [Site Map](#)

Customer Support

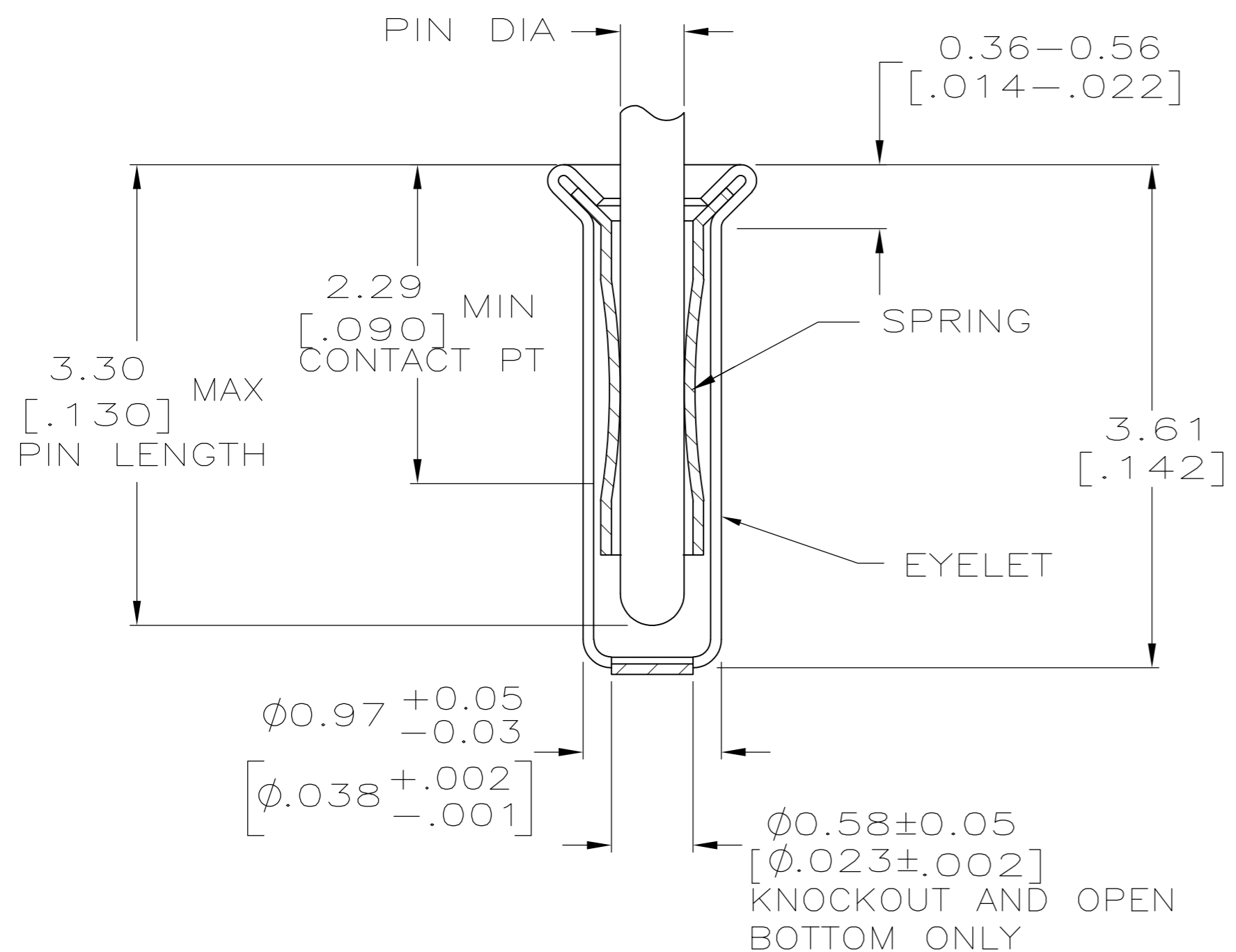
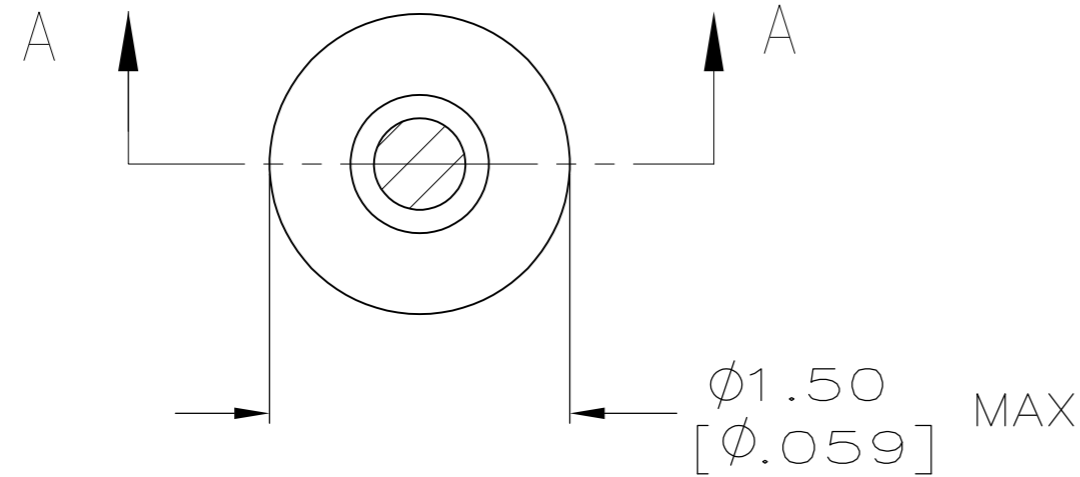
- [Email or Chat With Us](#)
- [Find a Phone Number](#)
- [Knowledge Base](#)
- [Manage Your Account](#)

Keep Me Informed



THIS DRAWING IS UNPUBLISHED. RELEASED FOR PUBLICATION
 © COPYRIGHT - By - ALL RIGHTS RESERVED.

LOC		DIST		REVISIONS			
P	LTR	DESCRIPTION		DATE	DWN	APVD	
CB5		REVISED PER ECO-11-004835		11MAR11	RK	HMR	



SECTION A-A

9 OBSOLETE PARTS: OBSOLETE CIS STREAMLINING PER D.RENAUD/D.SINISI

- 1 TIN PER MIL-T-10727 OR TIN LEAD .000254 [.000100] MIN THK.
- 2 GOLD PER MIL-G-45204, TYPE II, 0.00076 [.000030] MIN THK OVER NICKEL PER QQ-N-290 0.00028 [.000011] MIN THK ON CONTACT AREA.
- 3 GOLD FLASH PER MIL-G-45204, TYPE II, 0.13 μm [.000005] MIN THK. OVER NICKEL PLATE PER QQ-N-290 0.51 μm -1.52 μm [.000020-.000060] EXT THK.
- 4. RECOMMENDED HOLE SIZE, PLATED OR UNPLATED:
 MACHINE INSERTION: 1.04 \pm 0.05 [$.041 \pm .002$]
 HAND INSERTION: 1.02 $^{+0.10}_{-0.00}$ [$.040^{+0.004}_{-.000}$]
- 5. APPLICATION TOOL PART NUMBER:
 MACHINE NO. 682127-2
 INSERTION HEAD NO. 682039-1
- 6 TO INSURE PROPER SPRING TENSION DO NOT EXCEED A 0.10 [.004] DIFFERENCE IN PIN DIA WHEN CHANGING TO A SMALLER PIN.
- 7. BOTTOM PLUG KNOCKOUT TOOL PART NUMBER 69729 WITH TIP PART NUMBER 69728.
- 8 MATERIAL: SPRING: BERYLLIUM COPPER (QQ-C-533)
 EYELET: COPPER (QQ-C-576)

OBsolete	Bottom Type	Recommended Pin Dia	Eyelet Finish	Spring Finish	Part No
	CLOSED	0.33-0.51 [.013-.020]	GOLD 3	GOLD 2	9-330808-3
	CLOSED	0.33-0.51 [.013-.020]	TIN 1	TIN 1	9-330808-2
	CLOSED		TIN 1	TIN 1	7-330808-5
	CLOSED		GOLD 3	GOLD 2	7-330808-4
	CLOSED		TIN 1	TIN 1	7-330808-3
	CLOSED		GOLD 3	GOLD 2	7-330808-2
	CLOSED		TIN 1	TIN 1	7-330808-1
	CLOSED		GOLD 3	GOLD 2	7-330808-0
	CLOSED		TIN 1	TIN 1	6-330808-9
	CLOSED		GOLD 3	GOLD 2	6-330808-8
	CLOSED		TIN 1	TIN 1	6-330808-7
	CLOSED		GOLD 3	GOLD 2	6-330808-5
	CLOSED		TIN 1	TIN 1	5-330808-6
	CLOSED		GOLD 3	GOLD 2	5-330808-4
	CLOSED		TIN 1	TIN 1	5-330808-3
	CLOSED		GOLD 3	GOLD 2	5-330808-2
	CLOSED		TIN 1	TIN 1	5-330808-1
	CLOSED		GOLD 3	GOLD 2	5-330808-0
	CLOSED		TIN 1	TIN 1	4-330808-8
	CLOSED		GOLD 3	GOLD 2	4-330808-7
	CLOSED		TIN 1	TIN 1	4-330808-6
	CLOSED		GOLD 3	GOLD 2	4-330808-5
	CLOSED		TIN 1	TIN 1	4-330808-4
	CLOSED		GOLD 3	GOLD 2	4-330808-3
	CLOSED		TIN 1	TIN 1	4-330808-2
	CLOSED		GOLD 3	GOLD 2	4-330808-1
	CLOSED		TIN 1	TIN 1	4-330808-0
	CLOSED		GOLD 3	GOLD 2	3-330808-8
	CLOSED		TIN 1	TIN 1	3-330808-7
	CLOSED		GOLD 3	GOLD 2	3-330808-6
	CLOSED		TIN 1	TIN 1	3-330808-5
	CLOSED		GOLD 3	GOLD 2	3-330808-4
	CLOSED		TIN 1	TIN 1	3-330808-3
	CLOSED		GOLD 3	GOLD 2	3-330808-2
	CLOSED		TIN 1	TIN 1	3-330808-1
	CLOSED		GOLD 3	GOLD 2	3-330808-0
	CLOSED		TIN 1	TIN 1	2-330808-8
	CLOSED		GOLD 3	GOLD 2	2-330808-7
	CLOSED		TIN 1	TIN 1	2-330808-6
	CLOSED		GOLD 3	GOLD 2	2-330808-5
	CLOSED		TIN 1	TIN 1	2-330808-4
	CLOSED		GOLD 3	GOLD 2	2-330808-3
	CLOSED		TIN 1	TIN 1	2-330808-2
	CLOSED		GOLD 3	GOLD 2	2-330808-1
	CLOSED		TIN 1	TIN 1	2-330808-0
	CLOSED		GOLD 3	GOLD 2	1-330808-8
	CLOSED		TIN 1	TIN 1	1-330808-7
	CLOSED		GOLD 3	GOLD 2	1-330808-6
	CLOSED		TIN 1	TIN 1	1-330808-5
	CLOSED		GOLD 3	GOLD 2	1-330808-4
	CLOSED		TIN 1	TIN 1	1-330808-3
	CLOSED		GOLD 3	GOLD 2	1-330808-2
	CLOSED		TIN 1	TIN 1	1-330808-1
	CLOSED		GOLD 3	GOLD 2	1-330808-0
	CLOSED		TIN 1	TIN 1	0-330808-8
	CLOSED		GOLD 3	GOLD 2	0-330808-7
	CLOSED		TIN 1	TIN 1	0-330808-6
	CLOSED		GOLD 3	GOLD 2	0-330808-5
	CLOSED		TIN 1	TIN 1	0-330808-4
	CLOSED		GOLD 3	GOLD 2	0-330808-3
	CLOSED		TIN 1	TIN 1	0-330808-2
	CLOSED		GOLD 3	GOLD 2	0-330808-1
	CLOSED		TIN 1	TIN 1	0-330808-0
	CLOSED		GOLD 3	GOLD 2	0-330808-9
	CLOSED		TIN 1	TIN 1	0-330808-8
	CLOSED		GOLD 3	GOLD 2	0-330808-7
	CLOSED		TIN 1	TIN 1	0-330808-6
	CLOSED		GOLD 3	GOLD 2	0-330808-5
	CLOSED		TIN 1	TIN 1	0-330808-4
	CLOSED		GOLD 3	GOLD 2	0-330808-3
	CLOSED		TIN 1	TIN 1	0-330808-2
	CLOSED		GOLD 3	GOLD 2	0-330808-1
	CLOSED		TIN 1	TIN 1	0-330808-0
	CLOSED		GOLD 3	GOLD 2	0-330808-9
	CLOSED		TIN 1	TIN 1	0-330808-8
	CLOSED		GOLD 3	GOLD 2	0-330808-7
	CLOSED		TIN 1	TIN 1	0-330808-6
	CLOSED		GOLD 3	GOLD 2	0-330808-5
	CLOSED		TIN 1	TIN 1	0-330808-4
	CLOSED		GOLD 3	GOLD 2	0-330808-3
	CLOSED		TIN 1	TIN 1	0-330808-2
	CLOSED		GOLD 3	GOLD 2	0-330808-1
	CLOSED		TIN 1	TIN 1	0-330808-0
	CLOSED		GOLD 3	GOLD 2	0-330808-9
	CLOSED		TIN 1	TIN 1	0-330808-8
	CLOSED		GOLD 3	GOLD 2	0-330808-7
	CLOSED		TIN 1	TIN 1	0-330808-6
	CLOSED		GOLD 3	GOLD 2	0-330808-5
	CLOSED		TIN 1	TIN 1	0-330808-4
	CLOSED		GOLD 3	GOLD 2	0-330808-3
	CLOSED		TIN 1	TIN 1	0-330808-2
	CLOSED		GOLD 3	GOLD 2	0-330808-1
	CLOSED		TIN 1	TIN 1	0-330808-0
	CLOSED		GOLD 3	GOLD 2	0-330808-9
	CLOSED		TIN 1	TIN 1	0-330808-8
	CLOSED		GOLD 3	GOLD 2	0-330808-7
	CLOSED		TIN 1	TIN 1	0-330808-6
	CLOSED		GOLD 3	GOLD 2	0-330808-5
	CLOSED		TIN 1	TIN 1	0-330808-4
	CLOSED		GOLD 3	GOLD 2	0-330808-3
	CLOSED		TIN 1	TIN 1	0-330808-2
	CLOSED		GOLD 3	GOLD 2	0-330808-1
	CLOSED		TIN 1	TIN 1	0-330808-0
	CLOSED		GOLD 3	GOLD 2	0-330808-9
	CLOSED		TIN 1	TIN 1	0-330808-8
	CLOSED		GOLD 3	GOLD 2	0-330808-7
	CLOSED		TIN 1	TIN 1	0-330808-6
	CLOSED		GOLD 3	GOLD 2	0-330808-5
	CLOSED		TIN 1	TIN 1	0-330808-4
	CLOSED		GOLD 3	GOLD 2	0-330808-3
	CLOSED		TIN 1	TIN 1	0-330808-2
	CLOSED		GOLD 3	GOLD 2	0-330808-1
	CLOSED		TIN 1	TIN 1	0-330808-0
	CLOSED		GOLD 3	GOLD 2	0-330808-9
	CLOSED		TIN 1	TIN 1	0-330808-8
	CLOSED		GOLD 3	GOLD 2	0-330808-7
	CLOSED		TIN 1	TIN 1	0-330808-6
	CLOSED		GOLD 3	GOLD 2	0-330808-5
	CLOSED		TIN 1	TIN 1	0-330808-4
	CLOSED		GOLD 3	GOLD 2	0-330808-3
	CLOSED		TIN 1	TIN 1	0-330808-2
	CLOSED		GOLD 3	GOLD 2	0-330808-1
	CLOSED		TIN 1	TIN 1	0-330808-0
	CLOSED		GOLD 3	GOLD 2	0-330808-9
	CLOSED		TIN 1	TIN 1	0-330808-8
	CLOSED		GOLD 3	GOLD 2	0-330808-7
	CLOSED		TIN 1	TIN 1	0-330808-6
	CLOSED		GOLD 3	GOLD 2	0-330808-5
	CLOSED		TIN 1	TIN 1	0-330808-4
	CLOSED		GOLD 3	GOLD 2	0-330808-3
	CLOSED		TIN 1	TIN 1	0-330808-2
	CLOSED		GOLD 3	GOLD 2	0-330808-1
	CLOSED		TIN 1	TIN 1	0-330808-0
	CLOSED		GOLD 3	GOLD 2	0-330808-9
	CLOSED		TIN 1	TIN 1	0-330808-8
	CLOSED		GOLD 3	GOLD 2	0-330808-7
	CLOSED		TIN 1	TIN 1	0-330808-6
	CLOSED		GOLD 3	GOLD 2	0-330808-5
	CLOSED		TIN 1	TIN 1	0-330808-4
	CLOSED		GOLD 3	GOLD 2	0-330808-3
	CLOSED		TIN 1	TIN 1	0-330808-2
	CLOSED		GOLD 3	GOLD 2	0-330808-1
	CLOSED		TIN 1	TIN 1	0-330808-0
	CLOSED		GOLD 3	GOLD 2	0-330808-9
	CLOSED		TIN 1	TIN 1	0-330808-8
	CLOSED		GOLD 3	GOLD 2	0-330808-7
	CLOSED		TIN 1	TIN 1	0-330808-6
	CLOSED		GOLD 3	GOLD 2	0-330808-5
	CLOSED		TIN 1	TIN 1	0-330808-4
	CLOSED		GOLD 3	GOLD 2	0-330808-3
	CLOSED		TIN 1	TIN 1	0-330808-2
	CLOSED		GOLD 3	GOLD 2	0-330808-1
	CLOSED		TIN 1	TIN 1	0-330808-0
	CLOSED		GOLD 3	GOLD 2	0-330808-9
	CLOSED		TIN 1	TIN 1	0-330808-8
	CLOSED		GOLD 3	GOLD 2	0-330808-7
	CLOSED		TIN 1	TIN 1	0-330808-6
	CLOSED		GOLD 3	GOLD 2	0-330808-5
	CLOSED		TIN 1	TIN 1	0-330808-4
	CLOSED		GOLD 3	GOLD 2	0-330808-3
	CLOSED		TIN 1	TIN 1	0-330808-2
	CLOSED		GOLD 3	GOLD 2	0-330808-1
	CLOSED		TIN 1	TIN 1	0-330808-0
	CLOSED		GOLD 3	GOLD 2	0-330808-9
	CLOSED		TIN 1	TIN 1	0-330808-8
	CLOSED		GOLD 3	GOLD 2	0-330808-7
	CLOSED		TIN 1	TIN 1	0-330808-6
	CLOSED		GOLD 3	GOLD 2	0-330808-5
	CLOSED		TIN 1	TIN 1	0-330808-4
	CLOSED		GOLD 3	GOLD 2	0-330808-3
	CLOSED		TIN 1	TIN 1	0-330808-2
	CLOSED		GOLD 3	GOLD 2	0-330808-1
	CLOSED		TIN 1	TIN 1	0-330808-0
	CLOSED		GOLD 3	GOLD 2	0-330808-9
	CLOSED		TIN 1	TIN 1	0-330808-8
	CLOSED		GOLD 3	GOLD 2	0-330808-7
	CLOSED		TIN 1	TIN 1	0-330808-6
	CLOSED		GOLD 3	GOLD 2	0-330808-5
	CLOSED		TIN 1	TIN 1	0-330808-4
	CLOSED		GOLD 3	GOLD 2	0-330808-3
	CLOSED		TIN 1	TIN 1	0-330808-2
	CLOSED		GOLD 3	GOLD 2	0-330808-1
	CLOSED		TIN 1	TIN 1	0-330808-0