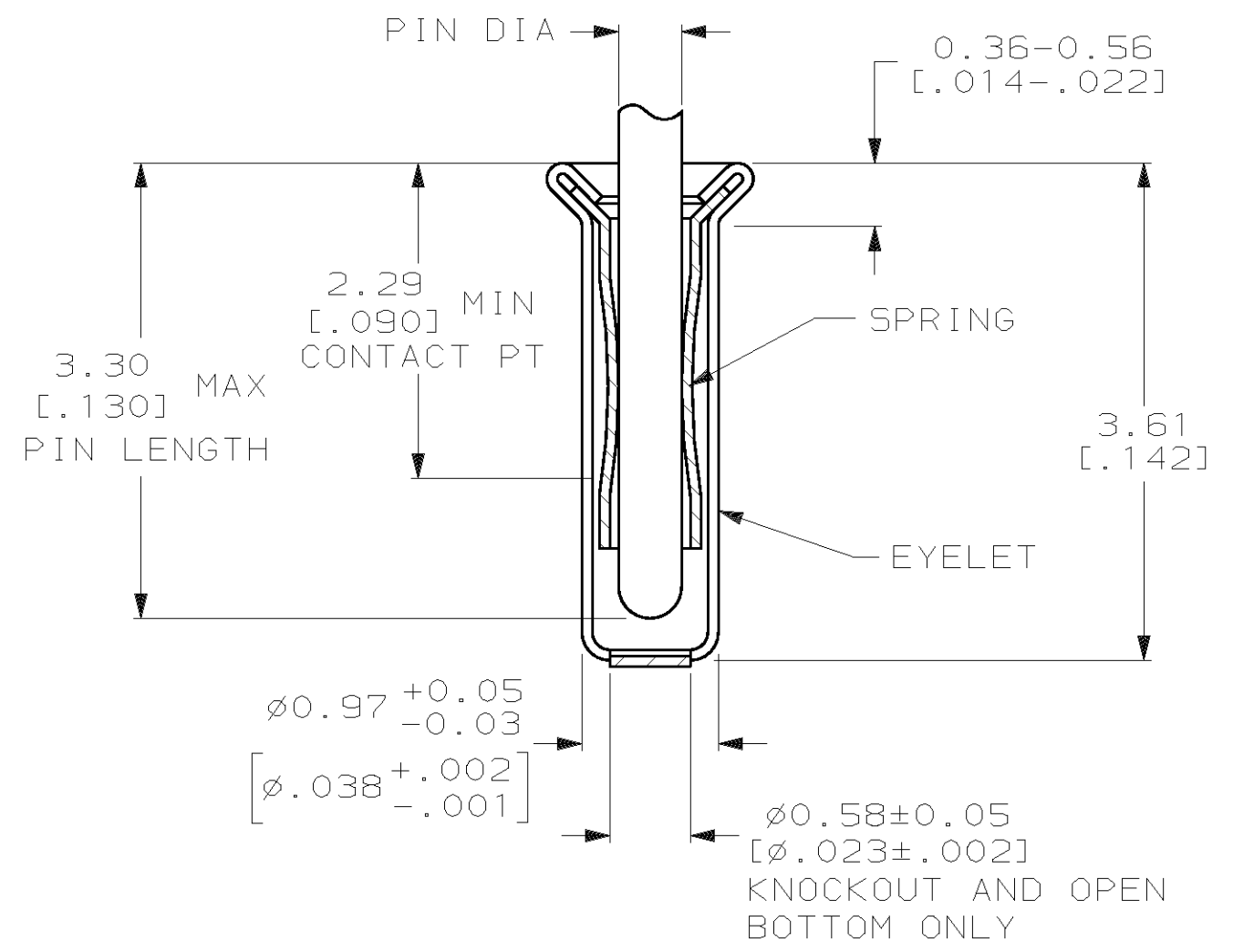
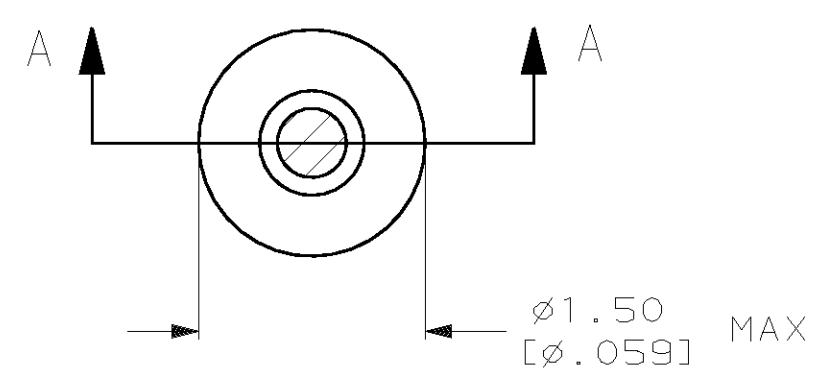


THIS DRAWING IS UNPUBLISHED. RELEASED FOR PUBLICATION ,19 .
 © COPYRIGHT 19 BY AMP INCORPORATED. ALL INTERNATIONAL RIGHTS RESERVED.

LOC	DIST	P	F	ZONE	LTR	REVISIONS	DATE	APPD
FT	64				BZ	OBSOLETE: -92; EC 0511-0143-02	11FEB03	KLK



SECTION A-A

- ① TIN PER MIL-T-10727 OR TIN LEAD .0.00254 [.000100] MIN THK.
- ② GOLD PER MIL-G-45204, TYPE II, 0.00076 [.000030] MIN THK OVER NICKEL PER QQ-N-290 0.00028 [.000011] MIN THK ON CONTACT AREA.
- ③ GOLD FLASH PER MIL-G-45204, TYPE II, 0.13µm [.000005] MIN THK. OVER NICKEL PLATE PER QQ-N-290 0.51µm-1.52µm [.000020-.000060] EXT THK.
- 4. RECOMMENDED HOLE SIZE, PLATED OR UNPLATED:
 MACHINE INSERTION: 1.04±0.05 [.041±.002]
 HAND INSERTION: 1.02 +0.10
 -0.00 [-.040 +.004
 -.000]
- 5. APPLICATION TOOL PART NUMBER:
 MACHINE NO. 682127-2
 INSERTION HEAD NO. 682039-1
- ⑥ TO INSURE PROPER SPRING TENSION DO NOT EXCEED A 0.10 [.004] DIFFERENCE IN PIN DIA WHEN CHANGING TO A SMALLER PIN.
- 7. BOTTOM PLUG KNOCKOUT TOOL PART NUMBER 69729 WITH TIP PART NUMBER 69728.

REVISIONS	DESCRIPTION	DATE	APPD
9-330808-3	GOLD ③		
9-330808-2	GOLD ②		
7-330808-5	TIN ①		
7-330808-4	GOLD ②		
7-330808-3	GOLD ③		
7-330808-2	TIN ①		
7-330808-1	TIN ①		
7-330808-0	GOLD ②		
6-330808-9	GOLD ③		
6-330808-8	TIN ①		
6-330808-7	TIN ①		
6-330808-5	GOLD ③		
5-330808-6	GOLD ②		
5-330808-4	TIN ①		
5-330808-3	TIN ①		
5-330808-1	GOLD ②		
5-330808-0	GOLD ③		
4-330808-8	GOLD ③		
4-330808-7	TIN ①		
4-330808-2	GOLD ②		
4-330808-1	TIN ①		
3-330808-8	GOLD ③		
3-330808-7	TIN ①		
3-330808-1	TIN ①		
2-330808-8	GOLD ③		
2-330808-7	TIN ①		
2-330808-2	GOLD ②		
2-330808-1	TIN ①		
	EYELET		
	SPRING		
	RECOMMENDED PIN DIA ⑥		
	FINISH		
	PART NO		

DO NOT SCALE PRINT. UNLESS SPECIFIED DIMENSIONS IN mm [INCHES] TOLERANCES ON : 2 PLC DEC ± - 3 PLC DEC ± 0.20 [.008] ANGLES ± - MATERIAL SPRING: BERYLLIUM COPPER QQ-C-533 EYELET: COPPER, QQ-C-576 FINISH SEE TABLE		DR R. TALLEY 4-5-91 CHK R. MILLER 8-22-91 APPD S. ROBERTSON 8-22-91 APPD - PRODUCT SPEC - APPLICATION SPEC - WEIGHT -	AMP Incorporated Harrisburg, PA 17105-3608 NAME MINIATURE SPRING SOCKET ASSEMBLY SERIES 1 SIZE CAGE CODE DRAWING NO SCALE	00779 330808 20:1	PART NO 330808 SHEET 1 OF 1
--	--	---	---	-------------------------	--------------------------------------