

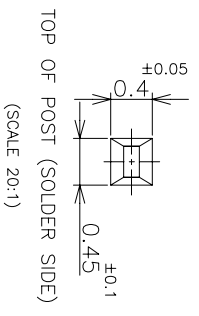
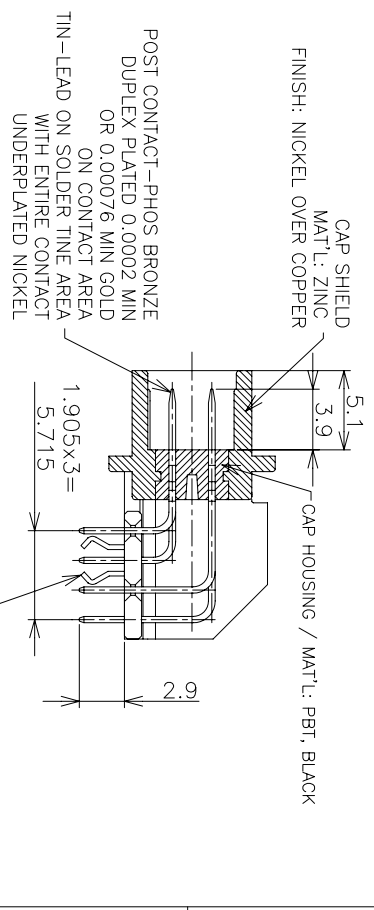
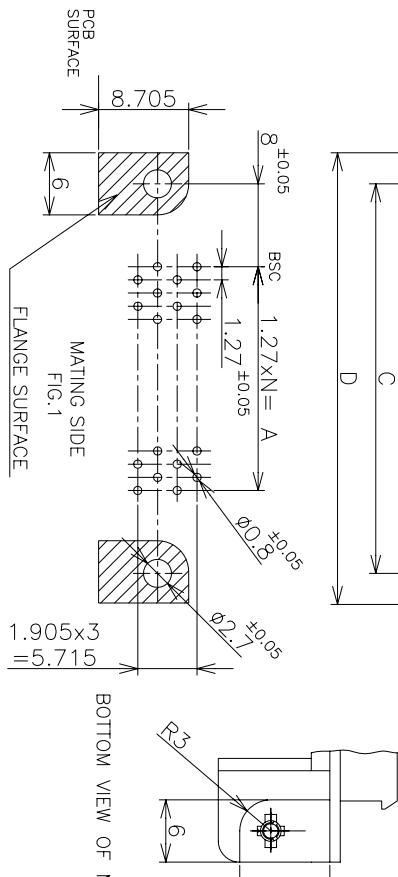
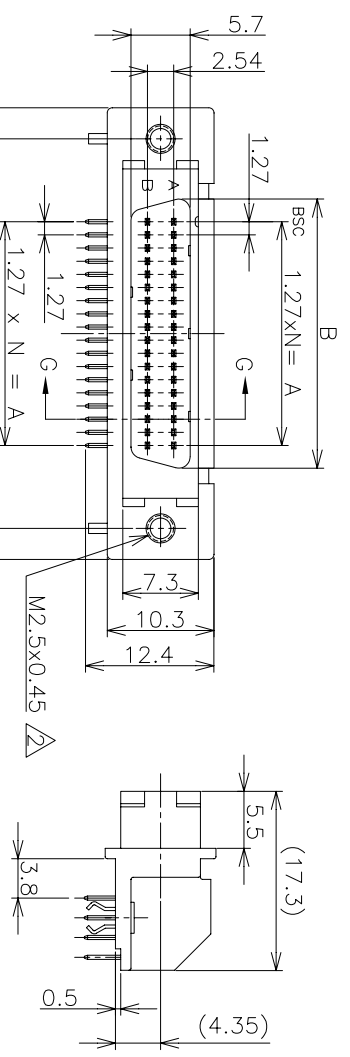
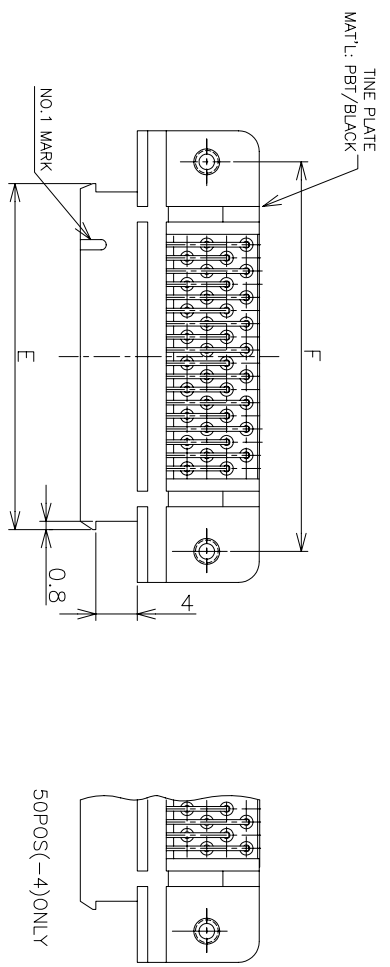
Distributed by:

JAMECO[®]
ELECTRONICS

www.Jameco.com ♦ 1-800-831-4242

The content and copyrights of the attached
material are the property of its owner.

Jameco Part Number 836271



POS	N	A	B	C	D	E	F	GOLD THK	PART NO.
96	47	59.69	64.06	75.7	81.7	71.49	75.7		2- 11 -6
68	33	41.91	46.28	57.9	63.9	53.71	57.9		2- 11 -5
50	24	30.48	34.85	46.5	52.5	42.28	46.5	0.00076	2- 11 -4
36	17	21.59	25.96	37.6	43.6	33.39	37.6	MIN	2- 11 -3
28	13	16.51	20.88	32.5	38.5	28.31	32.5		2- 11 -2
20	9	11.43	15.8	27.4	33.4	23.23	27.4		2- 11 -1
96	47	59.69	64.06	75.7	81.7	71.49	75.7		2- 11 -6
68	33	41.91	46.28	57.9	63.9	53.71	57.9		2- 11 -5
50	24	30.48	34.85	46.5	52.5	42.28	46.5	0.0002	2- 11 -4
36	17	21.59	25.96	37.6	43.6	33.39	37.6	MIN	2- 11 -3
28	13	16.51	20.88	32.5	38.5	28.31	32.5		2- 11 -2
20	9	11.43	15.8	27.4	33.4	23.23	27.4		2- 11 -1

GENERAL TOLERANCE
 10 ± : ±0.2
 30 > 10: ±0.25
 100 ≥ > 30: ±0.3
 ANGLES: ±5°

THIS DRAWING IS A CONTROLLED DOCUMENT.
 DIM: T.KAWAMAE 01.3UJ03
 CHK: Y.YAMAMOTO 01.3UJ03
 APVD: Y.YAMAMOTO
 PRODUCT SPEC: 108-5238-1
 APPLICATION SPEC: TYPE B
 WEIGHT: A3 00779 G=174341
 CUSTOMER DRAWING: SCALE 2:1 SHEET 1 OF 1 REV E

Tyco Electronics AMP K.K.
 Kawasaki, Japan

POST HEADER (HORIZONTAL, WITH R/L)
 AMPLIMITE .050 SERIES II CONN.
 TYPE B

DIMENSIONS: MM
 DIMENSIONS: TOLERANCES UNLESS OTHERWISE SPECIFIED:
 0 P/C ±
 1 P/C ±
 2 P/C ±
 3 P/C ±
 4 P/C ±

1 P.C BOARD HOLE LAY-OUT AS SHOWN FIG.1
 2 USED SCREW SIZE: M2.5 PANHEAD SCREW
 3 CONNECTOR TO BE MATED:
 X-174340-X