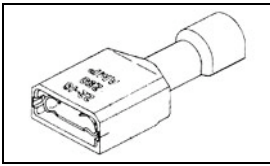


## 2-520183-4 Product Details

[Share](#) [Print](#) [Email](#)



**2-520183-4**

TE Internal Number: 2-520183-4  
✔ Active

[View 3D PDF](#)

### Ultra-Fast Receptacles & Tabs

✔ Always EU RoHS/ELV Compliant (Statement of Compliance)

#### Product Highlights:

- Terminal Type = Receptacle
- Proprietary Name = Ultra-Fast
- Receptacle Style = Straight
- Mating Area Interface Dimensions = 6.35 x 0.81 mm
- Phosphor Bronze Material

[View all Features](#)

### Quick Links

- [Pricing & Availability](#)
- [Search for Tooling](#)
- [Product Feature Selector](#)
- [Contact Us About This Product](#)

[Add to My Part List](#) [Request Sample](#) [Find Similar Products](#) [Buy Product](#)

### Documentation & Additional Information

#### Product Drawings:

- [RECEPTACLE ASSY,ULTRA-FAST, .250 SERIES,22-18 AWG \(PDF, English\)](#)

#### Catalog Pages/Data Sheets:

- [Ultra-Fast and Ultra Fast Plus \(PDF, English\)](#)

#### Product Specifications:

- [Ultra-Fast Fully Insulated FASTON Receptacle Terminals \(PDF, English\)](#)

#### Application Specifications:

- None Available

#### Instruction Sheets:

- None Available

#### CAD Files: [\(CAD Format & Compression Information\)](#)

- [2D Drawing \(DXF, Version P\)](#)
- [3D Model \(IGES, Version P\)](#)
- [3D Model \(STEP, Version P\)](#)

[List all Documents](#)

#### Additional Information:

- [Product Line Information](#)

#### Related Products:

- [Tooling](#)

### Product Features (Please use the Product Drawing for all design activity)

#### Product Type Features:

- Receptacle Style = Straight
- Insulation Support = Non-Insulation Support
- Finish = Tin

#### Dimensions:

- Mating Area Interface Dimensions (mm [in]) = 6.35 x 0.81 [.250 x .032]
- Insulation Diameter (mm [in]) = 3.43 [.135] Max.

#### Body Features:

- Material = Phosphor Bronze
- Wire Range (mm [AWG]) = 0.30-0.90<sup>2</sup> [22-18]
- Fully Insulated = Yes

#### Contact Features:

- Terminal Type = Receptacle

#### Industry Standards:

- RoHS/ELV Compliance = RoHS compliant, ELV compliant
- Lead Free Solder Processes = Not relevant for lead free process
- RoHS/ELV Compliance History = Always was RoHS compliant
- UL Flammability Rating = UL 94V-2

#### Packaging Features:

- Packaging Method = Strip

#### Other:

- Proprietary Name = Ultra-Fast
- Brand = AMP

### Corporate Information

- [About TE](#)
- [Investors](#)
- [News Room](#)
- [Supplier Portal](#)
- [Careers](#)
- [Terms & Conditions](#)
- [Privacy Policy](#)

### Quick Links

- [Distributor Inventory](#)
- [Product Cross Reference](#)
- [Documents & Drawings](#)
- [Product Compliance Support Center](#)
- [Site Map](#)

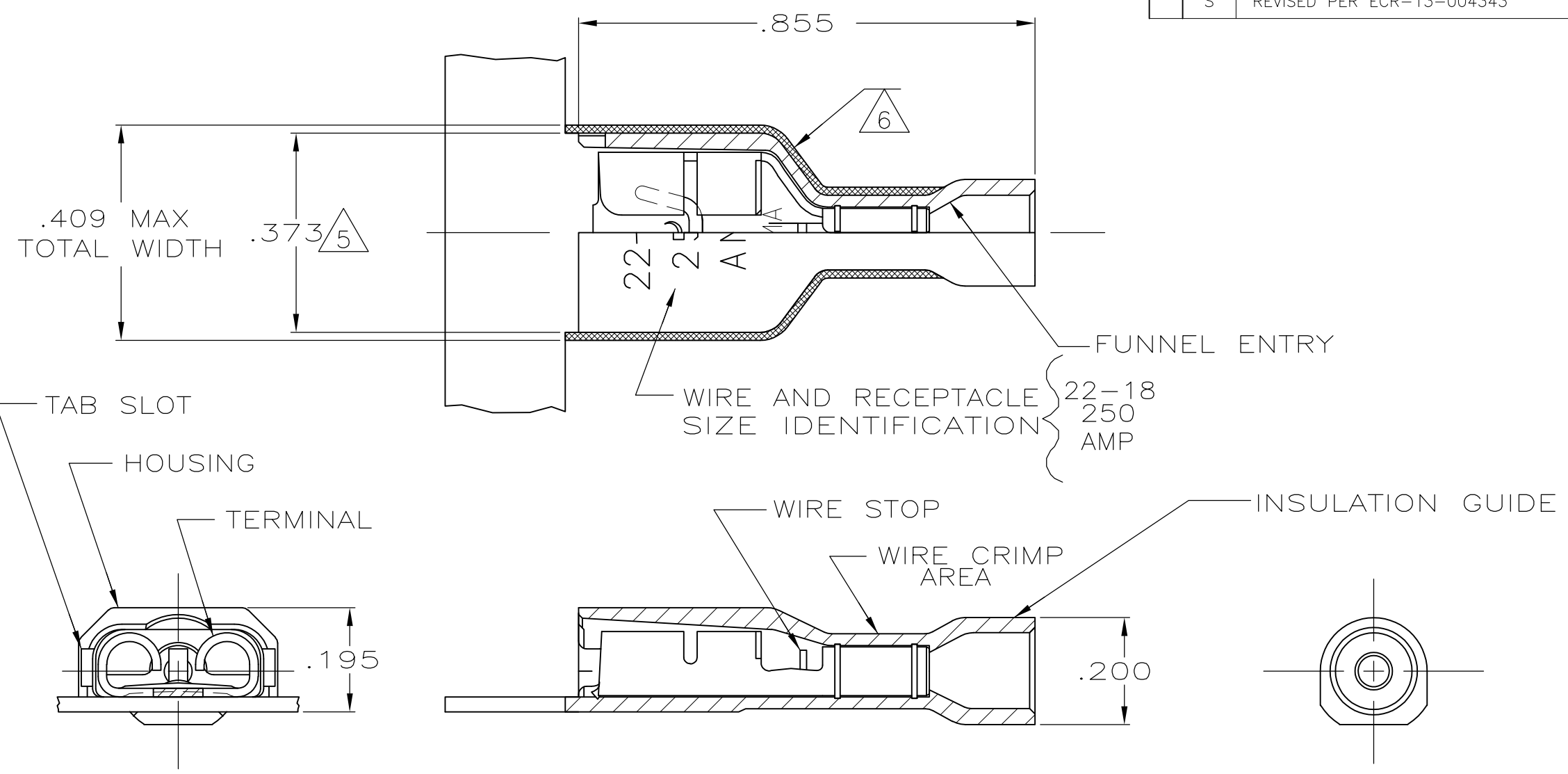
### Customer Support

- [Email or Chat With Us](#)
- [Find a Phone Number](#)
- [Knowledge Base](#)
- [Manage Your Account](#)

### Keep Me Informed

THIS DRAWING IS UNPUBLISHED. RELEASED FOR PUBLICATION  
 © COPYRIGHT - By - ALL RIGHTS RESERVED.

LOC	DIST	REVISIONS			
P	LTR	DESCRIPTION	DATE	DWN	APVD
AF	50	S	REVISED PER ECR-13-004343	30JUL13	KH KR



- 1 MATES WITH .032±.001x.250 TAB
- 2 WIRE STRIP LENGTH .281
- 3 INSULATION SIZE .135 MAX DIA
- 4 CONTINUOUS STRIP ON REELS
- 5 DIMENSION DOES NOT INCLUDE TRIM BURR
- 6 .015 MAX CARRIER TRIM BURR PER SIDE IS ALLOWABLE IN THE SHADED AREA

STANDARD	MATERIAL & FINISH	PART NO
STANDARD	HOUSING:NYLON,COLOR-BLACK TRANSLUCENT RECEPTACLE:BRASS, TIN	9-520183-2
BULK	HOUSING:NYLON,COLOR-RED TRANSLUCENT RECEPTACLE:BRASS, TIN	5-520183-2
STANDARD	HOUSING:NYLON,COLOR-RED TRANSLUCENT RECEPTACLE:#3 HARD PH BRONZE, TIN	2-520183-4
	HOUSING:NYLON,COLOR-RED TRANSLUCENT RECEPTACLE:BRASS, TIN	2-520183-2
PACKAGING	MATERIAL & FINISH	PART NO

THIS DRAWING IS A CONTROLLED DOCUMENT.		DWN P FORTNEY 10/18/88	<b>STE</b> TE Connectivity	
		CHK JR RUTH 10/18/88		
APVD K RANDOLPH 10/21/88		NAME		
PRODUCT SPEC		RECEPTACLE ASSY,ULTRA-FAST, .250 SERIES,22-18 AWG		
APPLICATION SPEC		108-2043		
MATERIAL SEE TABLE		114-2123	SIZE A3	CAGE CODE 00779
FINISH SEE TABLE		WEIGHT -	DRAWING NO C-520183	RESTRICTED TO -
		CUSTOMER DRAWING		SCALE 4:1
				SHEET 1 OF 1
				REV S