

Distributed by:

**JAMECO**<sup>®</sup>  
ELECTRONICS

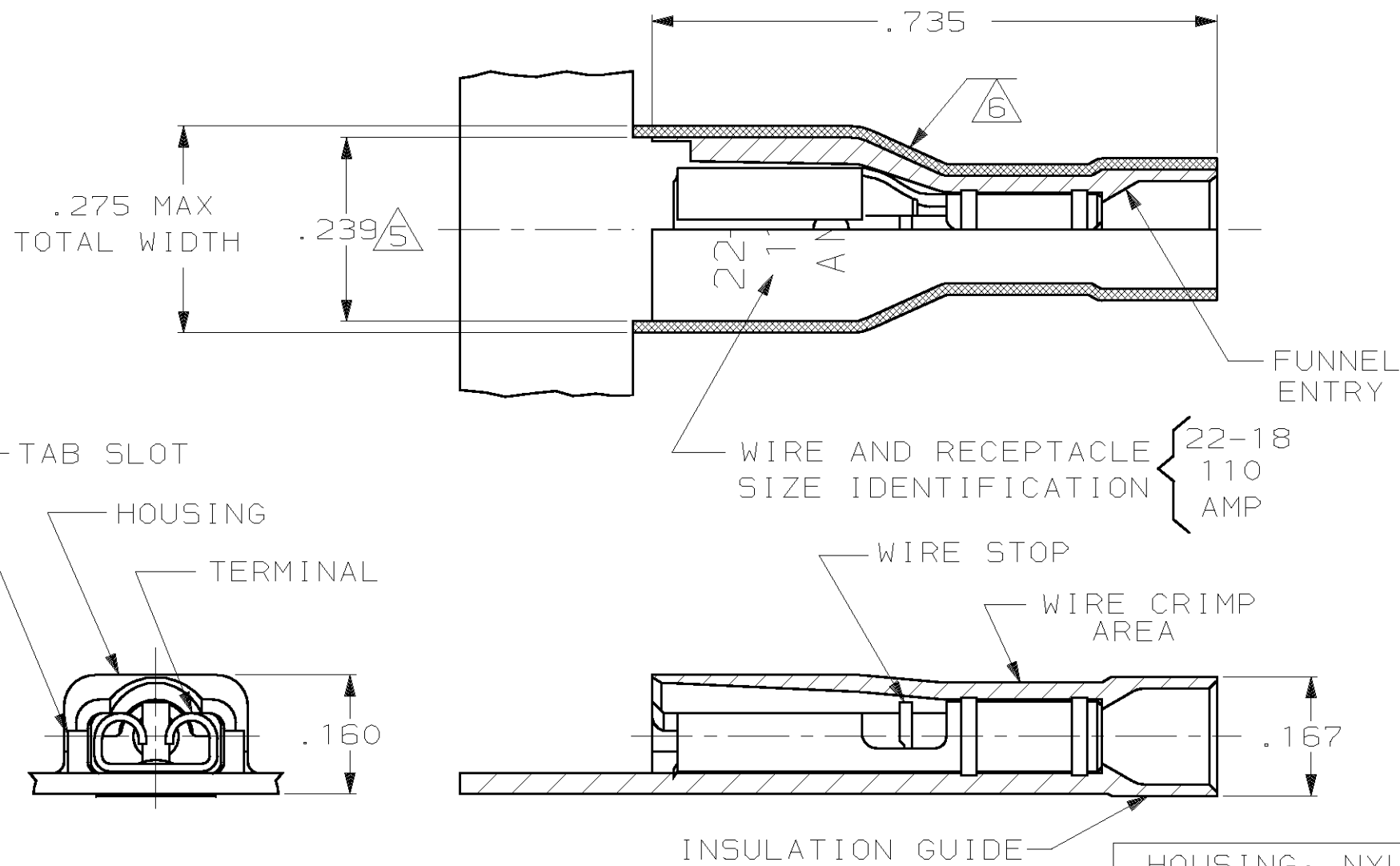
**www.Jameco.com ♦ 1-800-831-4242**

The content and copyrights of the attached  
material are the property of its owner.

Jameco Part Number 910469

THIS DRAWING IS UNPUBLISHED. RELEASED FOR PUBLICATION, 19  
 © COPYRIGHT 19 BY AMP INCORPORATED. ALL INTERNATIONAL RIGHTS RESERVED.

LOC AF	DIST 50	P	F	REVISIONS			DATE	APPD
				ZONE	LTR	DESCRIPTION		
					L	REV PER 0G1A-0145-99	3JUN99	JR/JW



- 1 MATES WITH .032±.001X.110 OR .125 TAB
- 2 WIRE STRIP LENGTH .281
- 3 INSULATION SIZE .120 MAX DIA
- 4 CONTINUOUS STRIP ON REELS
- △5 DIMENSION DOES NOT INCLUDE TRIM BURR
- △6 .015 MAX CARRIER TRIM BURR PER SIDE IS ALLOWABLE IN THE SHADED AREA

HOUSING: NYLON, COLOR-BLACK RECEPTACLE: #3 HARD BRASS TIN PL .000080 MIN THK	9-520272-2
HOUSING: NYLON, COLOR-RED TRANSLUCENT RECEPTACLE: #3 HARD BRASS TIN PL .000080 MIN THK	2-520272-2
MATERIAL & FINISH	PART NO

DO NOT SCALE PRINT. UNLESS SPECIFIED DIMENSIONS IN INCHES TOLERANCES ON: 2 PLC DEC ± - 3 PLC DEC ± .015 ANGLES ± -	DR 11/9/88 P FORTNEY	AMP INCORPORATED Harrisburg, Pa. 17105
	CHK 11/9/88 MS FEHER	
MATERIAL SEE TABLE	APPD 11/11/88 K RANDOLPH	NAME RECEPTACLE ASSY, ULTRA-FAST, .110/.125 SERIES, 22-18AWG
	APPD 11/11/88 TL SHUTTER	
FINISH SEE TABLE	PRODUCT SPEC 108-2043	SIZE <b>B</b>
	APPLICATION SPEC 114-2123	FSCM NO 00779
WEIGHT -		DRAWING NO 520272
	SCALE 5:1	SHEET 1 OF 1