



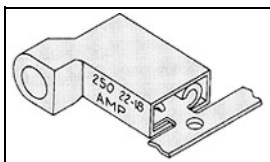
Have a Question?
Chat with a Product Information Specialist

What can we help you find?

[Products](#) [Industries](#) [Resources](#) [About TE](#) [My Account](#) [Innovation](#) [Support Center](#)

2-520335-2 Product Details

[Share](#) [Print](#) [Email](#)



2-520335-2

TE Internal Number: 2-520335-2

Active

[View 3D PDF](#)

Ultra-Fast Receptacles & Tabs

Always EU RoHS/ELV Compliant (Statement of Compliance)

Product Highlights:

- Terminal Type = Receptacle
- Proprietary Name = Ultra-Fast
- Receptacle Style = Flag
- Mating Area Interface Dimensions = 4.75 x 0.51 mm
- Brass Material

[View all Features](#)

Quick Links

- ▶ [Pricing & Availability](#)
- ▶ [Search for Tooling](#)
- ▶ [Product Feature Selector](#)
- ▶ [Contact Us About This Product](#)

[Add to My Part List](#) [Request Sample](#) [Find Similar Products](#) [Buy Product](#)

Documentation & Additional Information	
<p>Product Drawings:</p> <ul style="list-style-type: none"> • RECEPTACLE ASSEMBLY,ULTRA-FAST FLAG, 4.75 [.187] SER... (PDF, English) <p>Catalog Pages/Data Sheets:</p> <ul style="list-style-type: none"> • Ultra-Fast and Ultra Fast Plus (PDF, English) <p>Product Specifications:</p> <ul style="list-style-type: none"> • Ultra-Fast Fully Insulated FASTON Receptacle Terminals (PDF, English) <p>Application Specifications:</p> <ul style="list-style-type: none"> • None Available <p>Instruction Sheets:</p> <ul style="list-style-type: none"> • None Available <p>CAD Files: (CAD Format & Compression Information)</p> <ul style="list-style-type: none"> • 2D Drawing (DXF, Version H) • 3D Model (IGES, Version H) • 3D Model (STEP, Version H) 	<p>Additional Information:</p> <ul style="list-style-type: none"> • Product Line Information <p>Related Products:</p> <ul style="list-style-type: none"> • Tooling

[List all Documents](#)

Product Features (Please use the Product Drawing for all design activity)	
<p>Product Type Features:</p> <ul style="list-style-type: none"> • Terminal Type = Receptacle • Receptacle Style = Flag • Insulation Support = Non-Insulation Support • Finish = Tin <p>Dimensions:</p> <ul style="list-style-type: none"> • Mating Area Interface Dimensions (mm [in]) = 4.75 x 0.51 [.187 x .020] • Insulation Diameter (mm [in]) = 4.19 [.165] Max. <p>Body Features:</p> <ul style="list-style-type: none"> • Material = Brass • Wire Range (mm [AWG]) = 0.30-0.90² [22-18] • Fully Insulated = Yes 	<p>Housing Features:</p> <ul style="list-style-type: none"> • UL Flammability Rating = UL 94V-2 <p>Industry Standards:</p> <ul style="list-style-type: none"> • RoHS/ELV Compliance = RoHS compliant, ELV compliant • Lead Free Solder Processes = Not relevant for lead free process • RoHS/ELV Compliance History = Always was RoHS compliant <p>Packaging Features:</p> <ul style="list-style-type: none"> • Packaging Method = Loose Piece <p>Other:</p> <ul style="list-style-type: none"> • Proprietary Name = Ultra-Fast • Brand = AMP

Corporate Information

- [About TE](#)
- [Investors](#)
- [News Room](#)
- [Supplier Portal](#)
- [Careers](#)
- [Terms & Conditions](#)
- [Privacy Policy](#)

Quick Links

- [Distributor Inventory](#)
- [Product Cross Reference](#)
- [Documents & Drawings](#)
- [Product Compliance Support Center](#)
- [Site Map](#)

Customer Support

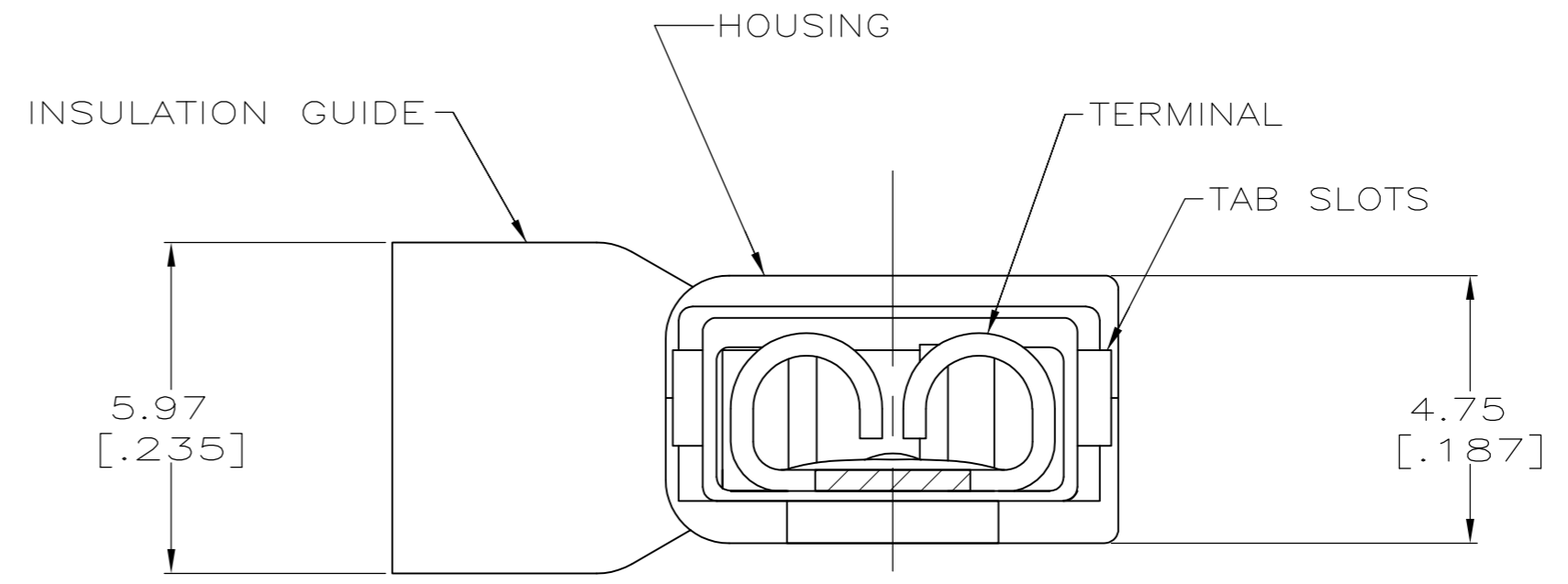
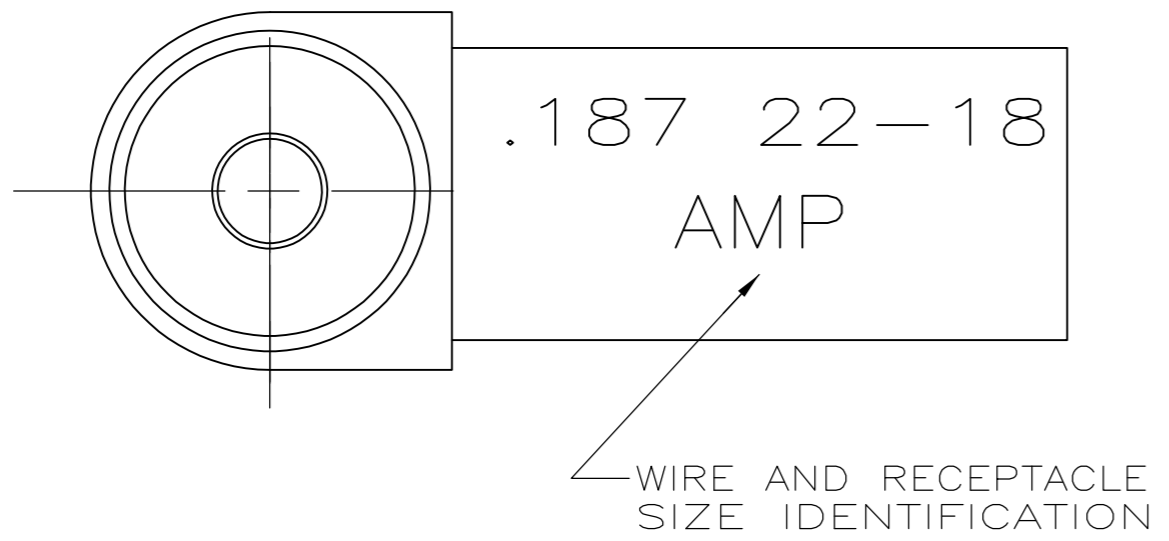
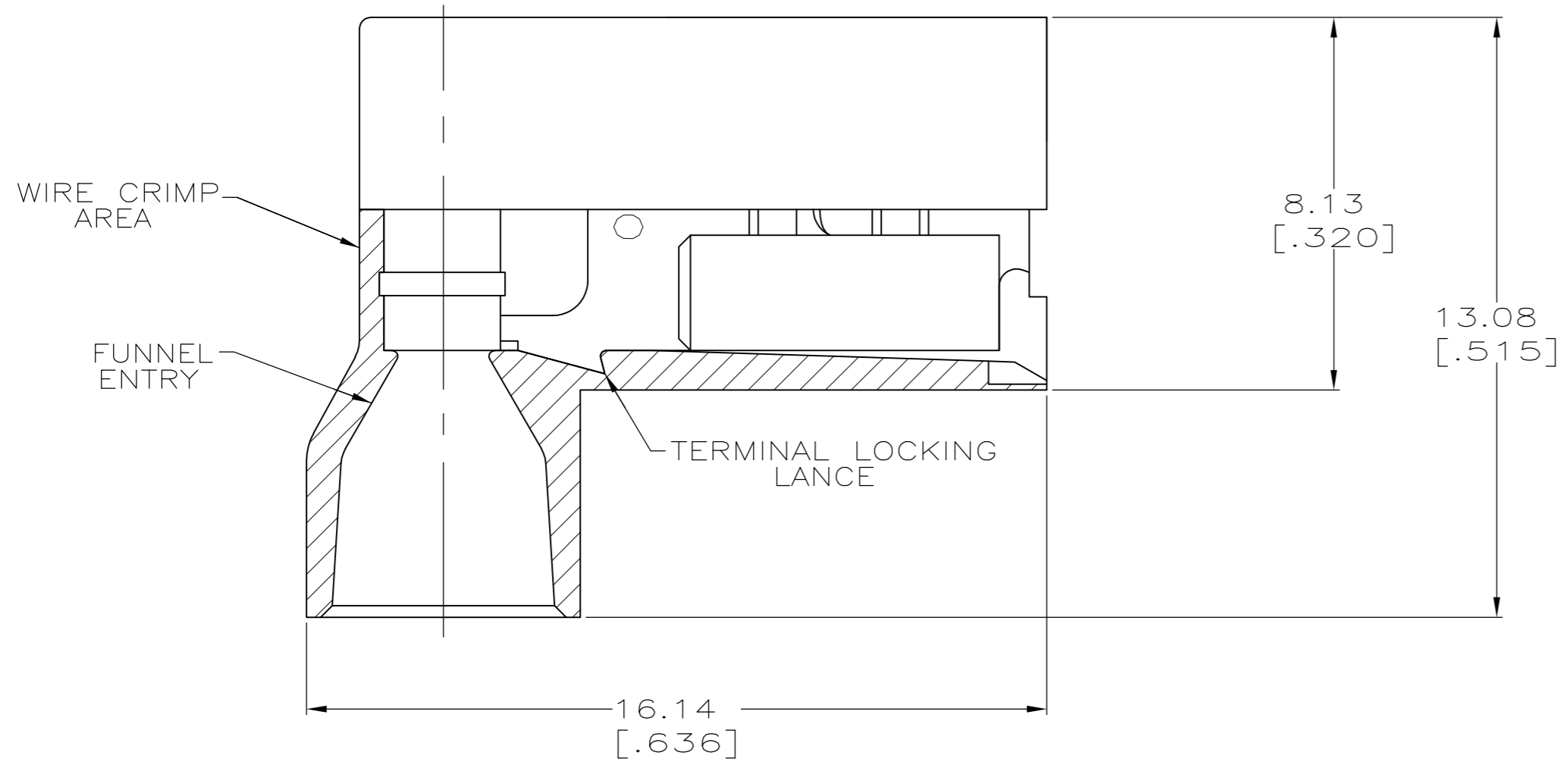
- [Email or Chat With Us](#)
- [Find a Phone Number](#)
- [Knowledge Base](#)
- [Manage Your Account](#)

Keep Me Informed

THIS DRAWING IS UNPUBLISHED. RELEASED FOR PUBLICATION
 © COPYRIGHT - By - ALL RIGHTS RESERVED.

LOC	DIST	REVISIONS			
P	LTR	DESCRIPTION	DATE	DWN	APVD
AF	50	K	REVISED PER ECR-13-004343	30JUL13	KH KR

- 1 FITS 0.51±0.025 X 4.75 [.020±.001 X .187] TAB
- 2 WIRE SIZE: 0.3-0.9mm² [22-18 AWG], STRANDED ONLY.
STRIP LENGTH 7.14 [.281]
- 3 INSULATION SIZE: 4.19 [.165] MAX DIA.
- 4 SUPPLIED AS LOOSE PIECE



OBSOLETE

TYPE 6/6 NYLON	RED TRANSLUCENT	0.41 [.016] #4H PH BRZ	TIN	2-520335-4
TYPE 6/6 NYLON	RED TRANSLUCENT	BRASS	TIN	2-520335-2
MATERIAL	COLOR	MATERIAL	FINISH	PART NO
HOUSING		TERMINAL		
THIS DRAWING IS A CONTROLLED DOCUMENT.		DWN P FORTNEY 8/10/90	 TE Connectivity RECEPTACLE ASSEMBLY, ULTRA-FAST FLAG, 4.75 [.187] SERIES, LOOSE PIECE	
DIMENSIONS: mm [INCHES]		CHK MS FEHER 8/23/90		
TOLERANCES UNLESS OTHERWISE SPECIFIED:		APVD D BRATINA 8/23/90		
0 PLC ± - 1 PLC ± - 2 PLC ± 0.38 [.015] 3 PLC ± - 4 PLC ± - ANGLES ± -		PRODUCT SPEC 108-2043		
MATERIAL SEE TABLE	FINISH SEE TABLE	APPLICATION SPEC 114-2123	WEIGHT -	SIZE A2
		CUSTOMER DRAWING	SCALE 8:1	SHEET 1 OF 1
			REV K	