

Distributed by:

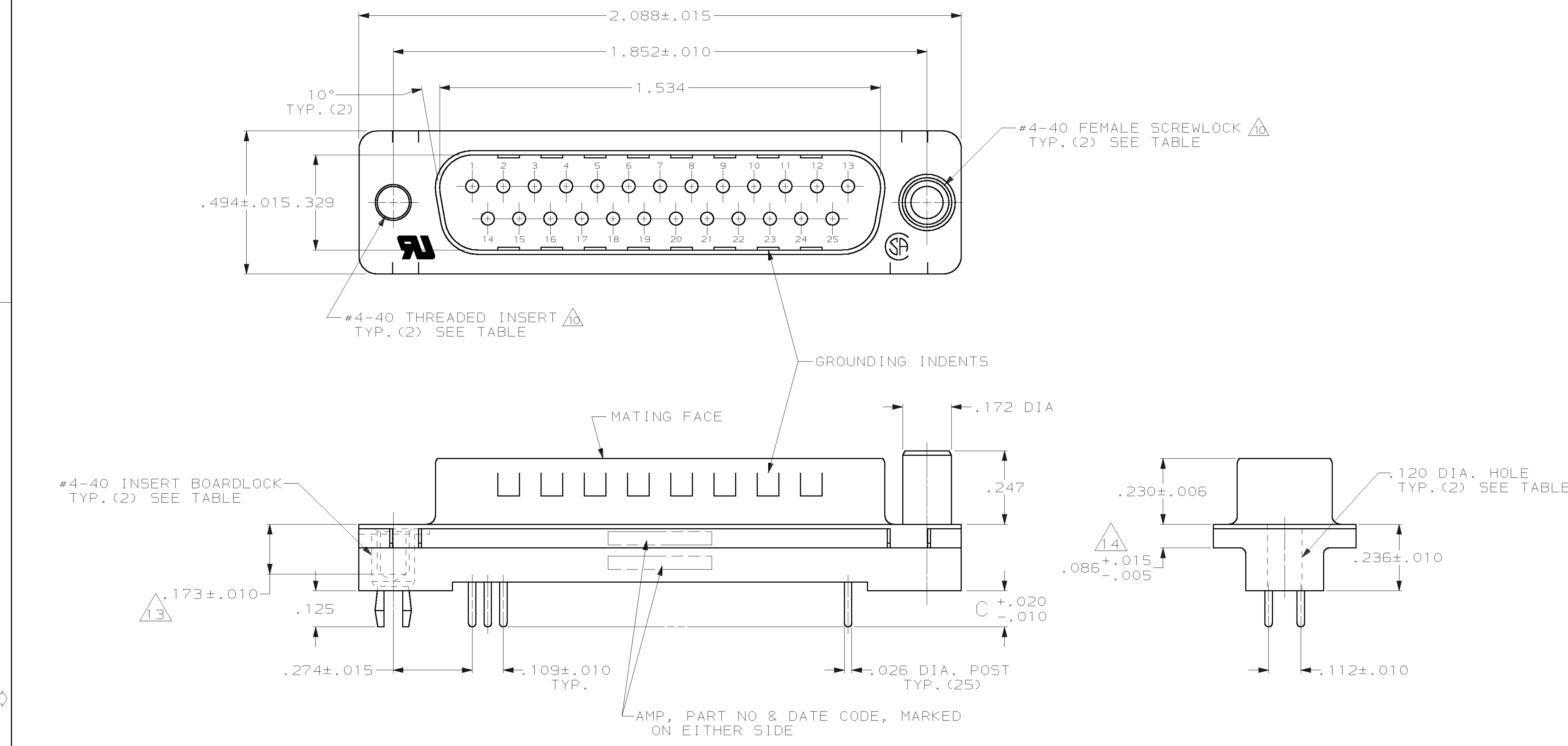
JAMECO[®]
ELECTRONICS

www.Jameco.com ♦ 1-800-831-4242

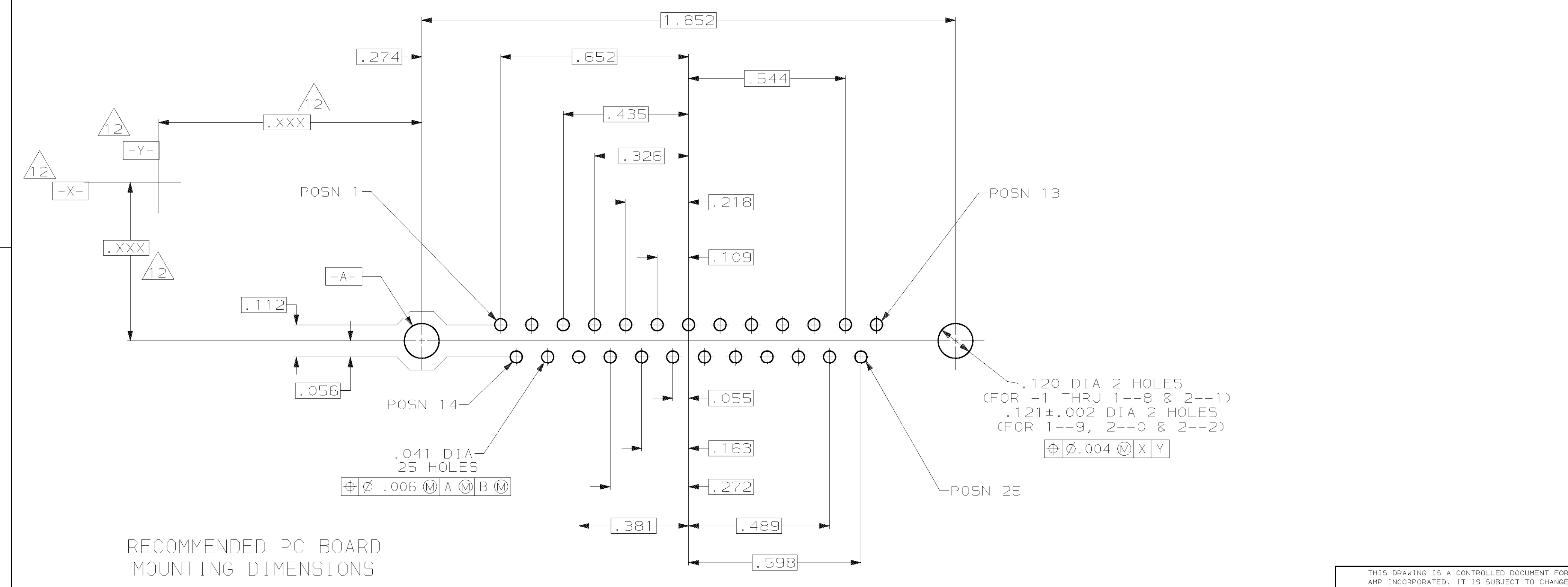
The content and copyrights of the attached
material are the property of its owner.

Jameco Part Number 838452

LOC		DIST		P		F		ZONE		LTR		REVISIONS			
GP	00											DESCRIPTION	DATE	APPD	
												R	REVISED PER EC 0513-0460-02	07MAR03	JG



- △1 FLAME RETARDANT 94V-0 RATED THERMOPLASTIC; COLOR: BLACK.
- △2 STEEL PER ASTM A109.
- △3 BRASS PER MIL-C-50.
- △4 INSERTS & BOARDLOCKS: BRASS PER QQ-B-626, SCREWLOCKS: ZINC.
- △5 GOLD PLATING PER MIL-G-45204, TIN PLATING PER MIL-T-10727, NICKEL PLATING PER QQ-N-290.
- △6 .000200-.000400 BRIGHT TIN.
- △7 INSERTS: UNPLATED, SCREWLOCKS: UNPLATED, BOARDLOCKS: TIN OVER COPPER.
- △8 GOLD FLASH FOR LENGTH OF .150 MIN FROM MATING END, .000100-.000200 BRIGHT TIN OR BRIGHT TIN LEAD ON TERMINATION END, ALL OVER .000050 NICKEL ON ENTIRE CONTACT.
- △9 GOLD PLATED FOR A LENGTH OF .150 FROM MATING END, .000030 MIN GOLD IN MATED AREA, .000100-.000200 BRIGHT TIN OR BRIGHT TIN-LEAD ON TERMINATION END, ALL OVER .000050 MIN NICKEL ON ENTIRE CONTACT.
- △10 INSERTS & SCREWLOCKS WILL WITHSTAND 10 IN. LBS. TORQUE AND 50 LBS. PULL OUT FORCE FROM MATING FACE SIDE.
- △11 CONTACTS SELECTIVELY LOADED IN POSITIONS 1 THRU 8 AND 10 THRU 25.
- △12 DATUMS AND BASIC DIMENSIONS ESTABLISHED BY CUSTOMER.
- △13 RECOMMENDED SCREWLOCK IS 747877-3 WITH RETENTION INSERTS.
- △14 .110 MAX IN SHELL TAB CLINCH AREAS.



REVISION	DESCRIPTION	DATE	APPD
△11	SUPERSEDED BY 2-747704-0 W/ INSERT BOARDLOCKS WITH FEMALE SCREWLOCKS	.125	2-747704-2
	SUPERSEDED BY 1-745968-6 WITH FEMALE SCREWLOCKS	.170	2-747704-1
	SUPERSEDED BY 2-747704-0 INSERT BOARDLOCKS	.125	2-747704-0
	OBSOLETE	.125	1-747704-9
	OBSOLETE	.250	1-747704-8
	SUPERSEDED BY 1-745968-6 WITH FEMALE SCREWLOCKS	.170	1-747704-6
	OBSOLETE	.250	1-747704-7
	SUPERSEDED BY 1-745968-4 WITH FEMALE SCREWLOCKS	.170	1-747704-5
	OBSOLETE	.125	1-747704-4
	OBSOLETE	.125	1-747704-3
	OBSOLETE	.250	1-747704-2
	OBSOLETE	.250	1-747704-1
	OBSOLETE	.170	1-747704-0
	OBSOLETE	.170	747704-9
	SUPERSEDED BY 745968-8 WITH THREADED INSERTS	.125	747704-8
	OBSOLETE	.125	747704-7
	OBSOLETE	.250	747704-6
	OBSOLETE	.250	747704-5
	OBSOLETE	.170	747704-4
	OBSOLETE	.170	747704-3
	OBSOLETE	.125	747704-2
	OBSOLETE	.125	747704-1
	OBSOLETE		

REMARKS		CONTACT FINISH	C	PART NUMBER
DO NOT SCALE PRINT. UNLESS SPECIFIED DIMENSIONS IN INCHES TOLERANCES ON: 2 PLC DEC ± .005 3 PLC DEC ± .005 ANGLES ± 2°		DR 2-27-85 S. WELDON		
MATERIAL HOUSING: △ SHELL: △ CONTACTS: △ INSERTS, SCREWLOCKS & BOARDLOCKS: △		CHK 2-27-85 J. GERACE		
FINISH SHELL: △ CONTACTS: SEE TABLE INSERTS, SCREWLOCKS & BOARDLOCKS: △		APPD 2-27-85 R. BRANDT		
THIS DRAWING IS A CONTROLLED DOCUMENT FOR AMP INCORPORATED. IT IS SUBJECT TO CHANGE AND THE CONTROLLING ENGINEERING ORGANIZATION SHOULD BE CONTACTED FOR THE LATEST REVISION.		APPD 2-27-85 R. BAER		
AMP Incorporated Harrisburg, PA 17105-3508		PRODUCT SPEC 108-40025		
NAME PLUG ASSEMBLY, SIZE 3, 25 POS., VERTICAL, .026 DIA. DUPLEX PLATED POSTS, FRONT SHELL, AMPLIMITE™ HDP		APPLICATION SPEC 114-40023		
SIZE D	CAGE CODE 00779	DRAWING NO C-747704		
SCALE NTS			SHEET 1 OF 1	