

## 292207-5 Product Details

[Share](#) [Print](#) [Email](#)



**292207-5**

TE Internal Number: 292207-5

Active

[View 3D PDF](#)

### 1.5mm AMP Mini CT Connectors

Always EU RoHS/ELV Compliant (Statement of Compliance)

#### Product Highlights:

- Wire-to-Board
- Applies To Printed Circuit Board
- Connector
- Header
- Header Type = Shrouded

[View all Features](#)

### Quick Links

- ▶ Pricing & Availability
- ▶ Search for Tooling
- ▶ View Mating Products (4)
- ▶ Product Feature Selector
- ▶ Contact Us About This Product

[Add to My Part List](#)

[Request Sample](#)

[Find Similar Products](#)

[Buy Product](#)

### Documentation & Additional Information

#### Product Drawings:

- AMP Mini CT Connector 1.5mm Pitch (PDF, English)

#### Catalog Pages/Data Sheets:

- 6-1773454-5\_AMP\_Mini\_CT\_Connector\_Series\_QRG (PDF, English)

#### Product Specifications:

- AMP MINI COMMON TERMINATION (CT), CONNECTOR, 1.5mm ... (PDF, Japanese)
- AMP Mini CT Connector 1.5mm Pitch (Crimp Type), Lead... (PDF, Japanese)

#### Application Specifications:

- None Available

#### Instruction Sheets:

- None Available

#### CAD Files: (CAD Format & Compression Information)

- 2D Drawing (DXF, Version A)
- 3D Model (IGES, Version A)
- 3D Model (STEP, Version A)

[List all Documents](#)

#### Related Products:

- Tooling
- Mating Products (4)

### Product Features (Please use the Product Drawing for all design activity)

#### Product Type Features:

- Product Type = Connector
- Connector Type = Header
- PCB Mounting Orientation = Vertical
- PCB Mount Alignment = With
- PCB Mount Retention = With
- PCB Mount Retention Type = Kinked Leg(s)
- Sealed = No
- UL File Number = E28476
- CSA File Number = LR 7189-133

#### Electrical Characteristics:

- Contact - Rated Current (A) = 2
- Operating Voltage Reference = AC/DC, AC, DC
- Operating Voltage (VAC) = 50
- Operating Voltage (VDC) = 50

#### Termination Features:

- Wire/Cable Size (AWG) = 24 - 28
- Termination Method to PC Board = Through Hole - Solder

#### Dimensions:

- Mating Post Length (mm [in]) = 2.40 [0.095]
- PCB Thickness, Recommended (mm [in]) = 1.60 [0.063]
- Tail Length (mm [in]) = 3 [0.118]
- Length (X-Axis) (mm [in]) = 10.00 [0.393]
- Width (Z-Axis) (mm [in]) = 4.70 [0.185]
- Profile Height (Y-Axis) (mm [in]) = 8.40 [0.330]

#### Body Features:

- Header Type = Shrouded
- Mating Retention = With

#### Contact Features:

- Contact Type = Pin
- Contact Plating, Mating Area, Material = Tin
- Contact Plating, Mating Area, Thickness (µm [µin]) = 1 [39.37]
- Contact Design = Square Post
- Contact Plating, Termination Area, Material = Tin
- Contact Plating, Termination Area, Thickness (µm [µin]) = 1 [39.37]

#### Housing Features:

- Centerline (mm [in]) = 1.50 [0.059]
- Mating Alignment = With
- Housing Color = Natural
- UL Flammability Rating = UL 94V-0

#### Configuration Features:

- Number of Positions = 5
- Number of Rows = 1
- Tail Orientation = Staggered
- Shrouded = Yes

#### Industry Standards:

- RoHS/ELV Compliance = RoHS compliant, ELV compliant
- Lead Free Solder Processes = Wave solder capable to 240°C, Wave solder capable to 260°C, Wave solder capable to 265°C
- RoHS/ELV Compliance History = Always was RoHS compliant
- Agency/Standard = UL, CSA

#### Environmental:

- Operating Temperature (°C [°F]) = -30 - +105 [-22 - +221]

#### Conditions for Usage:

- Applies To = Printed Circuit Board
- Accepts Wire Insulation Diameter, Range (mm [in]) = 0.85 - 1.05 [0.0334 - 0.041]

#### Operation/Application:

- Application Use = Wire-to-Board
- Contact Transmits (Typical Application) = Signal (Data)
- Pick and Place Cover = Without

#### Packaging Features:

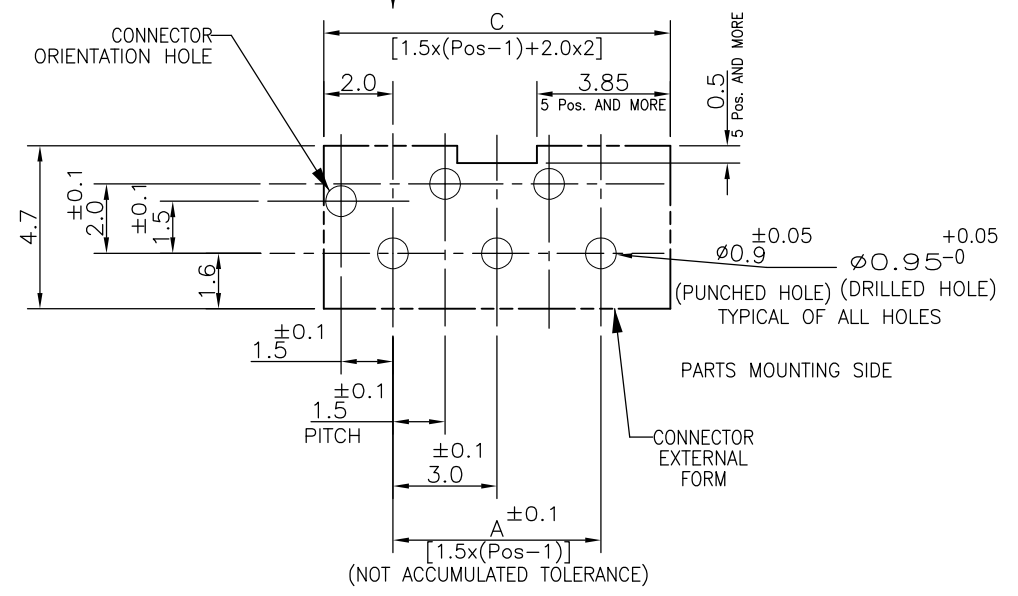
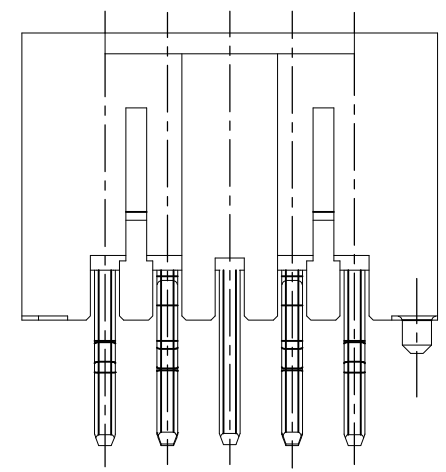
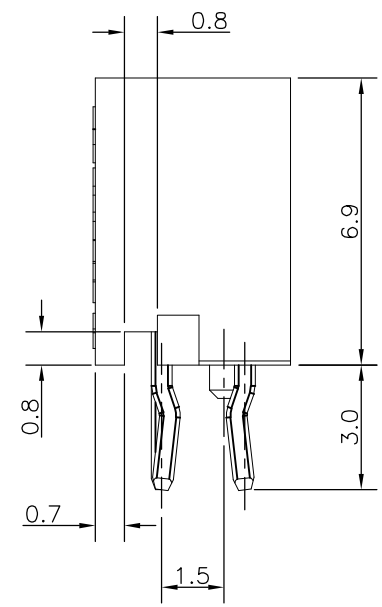
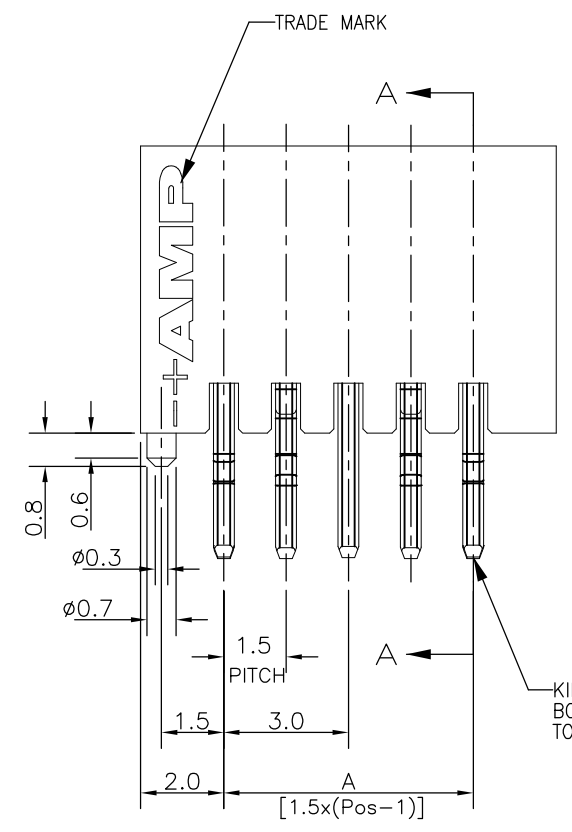
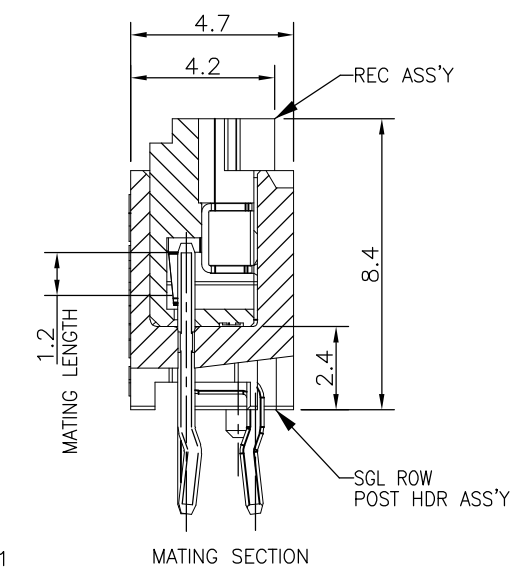
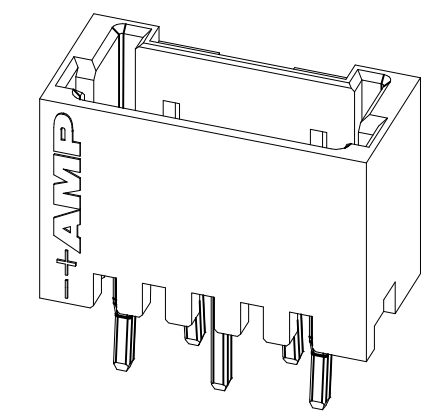
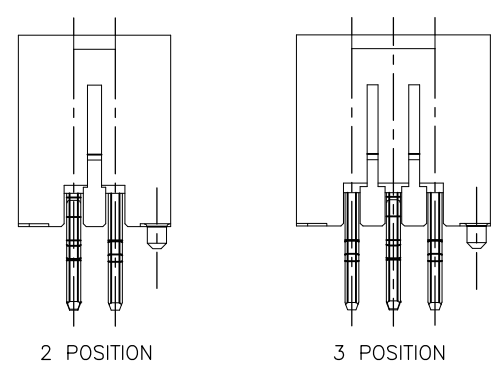
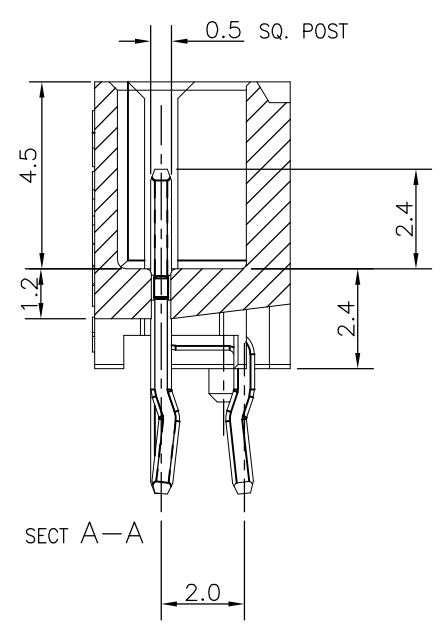
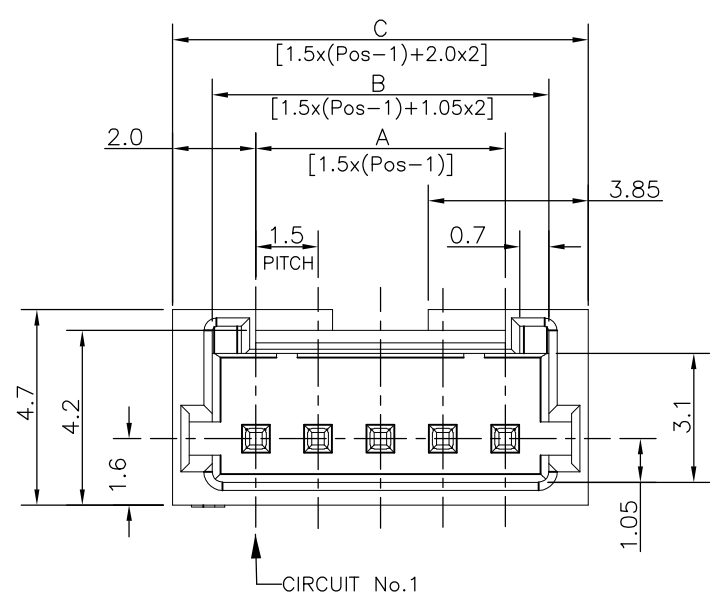
- Packaging Method = Tray, Box

#### Other:

- Brand = AMP

THIS DRAWING IS UNPUBLISHED. RELEASED FOR PUBLICATION  
 © COPYRIGHT - By - ALL RIGHTS RESERVED.

LOC	DIST	REVISIONS					
ES	00	P	LTR	DESCRIPTION	DATE	DWN	APVD
		A1		REVISED PER ECO-11-005033	11MAR11	RK	HMR



NOTES:  
 1. MATERIAL:  
 HOUSING: NYLON(G.F.) UL94V-0, COLOR: GRAY, BLUE  
 POST: PRE-TIN 0.5mm SQ. BRASS WIRE

TOLERANCES UNLESS OTHERWISE SPECIFIED:

10 > *	:	±0.2
30 > * > 10	:	±0.25
100 > * > 30	:	±0.3
ANGLE	:	±3°

THIS DRAWING IS A CONTROLLED DOCUMENT.

DIMENSIONS:	TOLERANCES UNLESS OTHERWISE SPECIFIED:
mm	0 PLC ± -
	1 PLC ± -
	2 PLC ± -
	3 PLC ± -
	4 PLC ± -
	ANGLES ± -
MATERIAL	FINISH
SEE NOTE 1	SEE NOTE 1

DWN	S.YAO	31JAN03	TE Connectivity AMP Mini CT Connector 1.5mm Pitch Single Row Post HDR Ass'y (V) DIP Staggered Type with Boss with Kink					
CHK	S.YAO	31JAN03						
APVD	T. SASAKI	31JAN03						
PRODUCT SPEC	NAME							
APPLICATION SPEC	108 - 60018		SIZE	CAGE CODE	DRAWING NO	RESTRICTED TO		
WEIGHT	SEE TABLE		A3	00779	C-292207	-		
CUSTOMER DRAWING			SCALE	-	SHEET	1 OF 2	REV	A1

LOC	DIST	REVISIONS					
ES	00	P	LTR	DESCRIPTION	DATE	DWN	APVD
		-		SEE SHEET 1	-	-	-


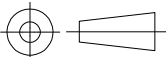
0.96	32.5	30.6	28.5	20	7-292207-0	2-292207-0
0.91	31.0	29.1	27.0	19	6-292207-9	1-292207-9
0.87	29.5	27.6	25.5	18	6-292207-8	1-292207-8
0.82	28.0	26.1	24.0	17	6-292207-7	1-292207-7
0.78	26.5	24.6	22.5	16	6-292207-6	1-292207-6
0.73	25.0	23.1	21.0	15	6-292207-5	1-292207-5
0.69	23.5	21.6	19.5	14	6-292207-4	1-292207-4
0.64	22.0	20.1	18.0	13	6-292207-3	1-292207-3
0.60	20.5	18.6	16.5	12	6-292207-2	1-292207-2
0.55	19.0	17.1	15.0	11	6-292207-1	1-292207-1
0.51	17.5	15.6	13.5	10	6-292207-0	1-292207-0
0.46	16.0	14.1	12.0	9	5-292207-9	292207-9
0.42	14.5	12.6	10.5	8	5-292207-8	292207-8
0.37	13.0	11.1	9.0	7	5-292207-7	292207-7
0.33	11.5	9.6	7.5	6	5-292207-6	292207-6
0.28	10.0	8.1	6.0	5	5-292207-5	292207-5
0.24	8.5	6.6	4.5	4	5-292207-4	292207-4
0.19	7.0	5.1	3.0	3	5-292207-3	292207-3
0.16	5.5	3.6	1.5	2	5-292207-2	292207-2
WEIGHT (g)	C	B	A	Pos.	BLUE	GRAY
	DIMENSIONS				P/N	

RELEASED FOR PUBLICATION

ALL RIGHTS RESERVED.

THIS DRAWING IS UNPUBLISHED.

By -  
COPYRIGHT -

DIMENSIONS: mm	DWN	-	MATERIAL	-	FINISH	-
	CHK	-	 TE Connectivity			
TOLERANCES UNLESS OTHERWISE SPECIFIED:	APVD	-				
0 PLC ± -	PRODUCT SPEC	-	NAME			
1 PLC ± SEE SHEET	APPLICATION SPEC	-	AMP Mini CT Connector 1.5mm Pitch			
2 PLC ± 1 OF 2	WEIGHT	-	SIZE	CAGE CODE	DRAWING NO	RESTRICTED TO
3 PLC ± -			A4	00779	C-292207	-
4 PLC ± -			CUSTOMER DRAWING			
ANGLES ± -			SCALE	NON	SHEET	2 OF 2
			REV A1			