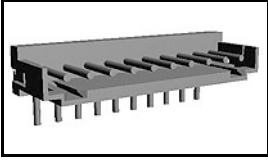


292253-2 Product Details

[Share](#) [Print](#) [Email](#)




292253-2

TE Internal Number: 292253-2

 Active

[View 3D PDF](#)

2mm AMP CT Connectors

 Always EU RoHS/ELV Compliant
(Statement of Compliance)

Product Highlights:

- Wire-to-Board
- Applies To Printed Circuit Board
- Connector
- Header
- Header Type = Partially Shrouded

[View all Features](#)

Quick Links

- ▶ [Pricing & Availability](#)
- ▶ [Search for Tooling](#)
- ▶ [View Mating Products \(3\)](#)
- ▶ [Product Feature Selector](#)
- ▶ [Contact Us About This Product](#)

[Add to My Part List](#)

[Request Sample](#)

[Find Similar Products](#)

[Buy Product](#)

Documentation & Additional Information

Product Drawings:

- [POST HEADER ASS'Y HORIZONTAL TYPE \(AMP CT CONNECTOR ...\)](#) (PDF, English)

Catalog Pages/Data Sheets:

- [2.0MM_AMP_CT_CONNECTOR_SERIES_QUICK_REF_GUIDE](#) (PDF, English)

Product Specifications:

- None Available

Application Specifications:

- None Available

Instruction Sheets:

- None Available

CAD Files: (CAD Format & Compression Information)

- [2D Drawing](#) (DXF, Version 0)
- [3D Model](#) (IGES, Version 0)
- [3D Model](#) (STEP, Version 0)

[List all Documents](#)

Additional Product Images:

- [Typical Application](#)

Related Products:

- [Tooling](#)
- [Mating Products \(3\)](#)

Product Features (Please use the Product Drawing for all design activity)

Product Type Features:

- [Product Type](#) = Connector
- [Connector Type](#) = Header
- [Termination Method to PC Board](#) = Through Hole - Solder
- [PCB Mounting Orientation](#) = Right Angle
- [PCB Mount Alignment](#) = Without
- [PCB Mount Retention](#) = With
- [PCB Mount Retention Type](#) = Kinked Leg(s)
- [Shrouded](#) = Yes - Partial
- [Sealed](#) = No
- [UL File Number](#) = E28476
- [CSA File Number](#) = LR 7189

Electrical Characteristics:

- [Contact - Rated Current \(A\)](#) = 4

Housing Features:

- [Connector Style](#) = Plug
- [Centerline \(mm \[in\]\)](#) = 2.00 [0.079]
- [Housing Color](#) = Natural
- [UL Flammability Rating](#) = UL 94V-0

Configuration Features:

- [Number of Positions](#) = 2
- [Number of Rows](#) = 1

Industry Standards:

- [RoHS/ELV Compliance](#) = RoHS compliant, ELV compliant
- [Lead Free Solder Processes](#) = Wave solder capable to 240°C, Wave solder capable to 260°C, Wave solder capable to 265°C
- [RoHS/ELV Compliance History](#) = Always was RoHS

- Operating Voltage Reference = AC/DC, AC, DC
- Operating Voltage (VAC) = 125
- Operating Voltage (VDC) = 125

Termination Features:

- Wire/Cable Size (AWG) = 22 – 28
- Tail Orientation = In-line
- Tail Length (mm [in]) = 3.2 [0.126]

Dimensions:

- Mating Post Length (mm [in]) = 4.50 [0.177]
- PCB Thickness, Recommended (mm [in]) = 0.80 – 1.60 [0.031 – 0.063]
- Length (X-Axis) (mm [in]) = 5.80 [0.228]
- Width (Z-Axis) (mm [in]) = 4.00 [0.157]
- Profile Height (Y-Axis) (mm [in]) = 8.80 [0.346]

Body Features:

- Header Type = Partially Shrouded
- Mating Retention = Without

Contact Features:

- Contact Type = Pin
- Contact Plating, Mating Area, Material = Tin
- Contact Plating, Mating Area, Thickness (µm [µin]) = 1 [39.37]
- Contact Plating, Termination Area, Material = Tin
- Contact Plating, Termination Area, Thickness (µm [µin]) = 1 [40]

compliant

- Agency/Standard = UL, CSA

Environmental:

- Operating Temperature (°C [°F]) = -40 – +105 [-40 – +221]

Conditions for Usage:

- Applies To = Printed Circuit Board

Operation/Application:

- Application Use = Wire-to-Board
- Contact Transmits (Typical Application) = Signal (Data)
- Pick and Place Cover = Without

Packaging Features:

- Packaging Method = Bag, Box

Other:

- Brand = AMP

Corporate Information

- [About TE](#)
- [Investors](#)
- [News Room](#)
- [Supplier Portal](#)
- [Careers](#)
- [Terms & Conditions](#)
- [Privacy Policy](#)

Quick Links

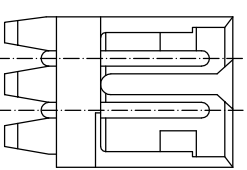
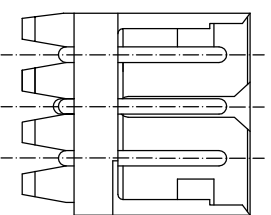
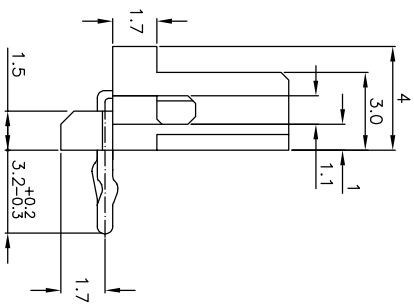
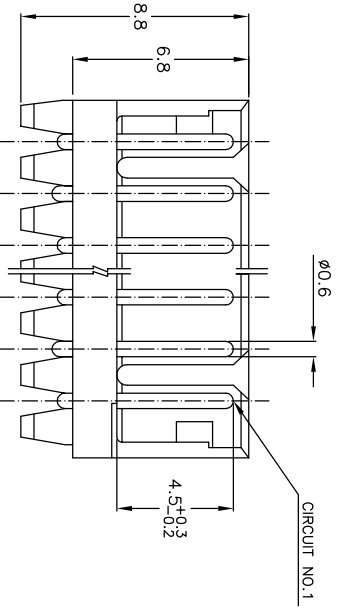
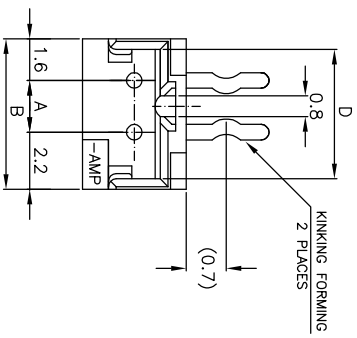
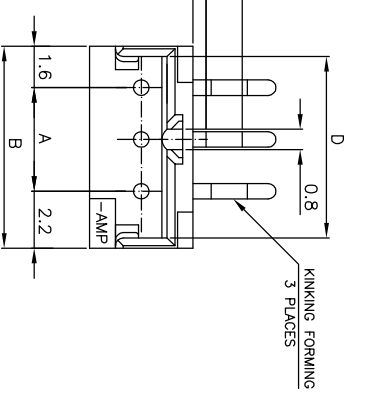
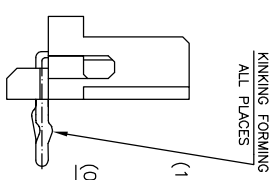
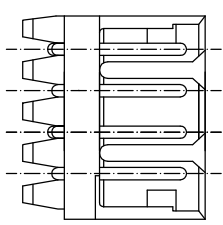
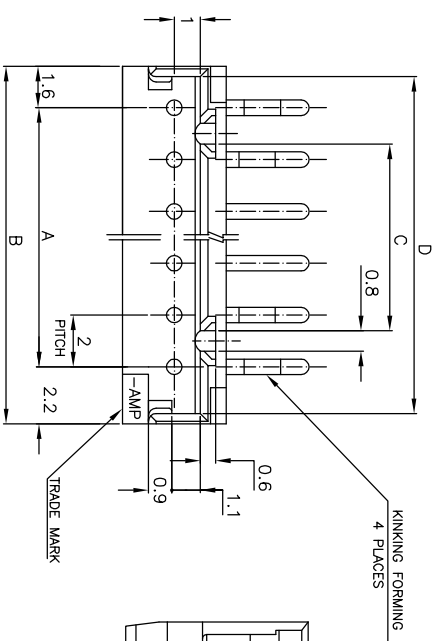
- [Distributor Inventory](#)
- [Product Cross Reference](#)
- [Documents & Drawings](#)
- [Product Compliance Support Center](#)
- [Site Map](#)

Customer Support

- [Email or Chat With Us](#)
- [Find a Phone Number](#)
- [Knowledge Base](#)
- [Manage Your Account](#)

Keep Me Informed

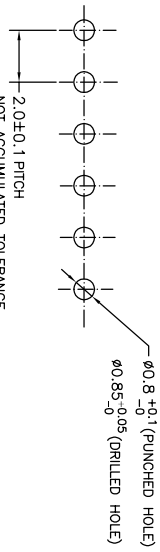




5~15 Pos.

NOTES:

- MATERIAL: NYLON 66 (UL94V-0)
POST - TIN BRASS
- APPLICABLE RECEPTACLE P/N 173977
- THIS PART HAS BEEN OBSOLETE.



RECOMMENDABLE PCB LAYOUT (PCB THK:0.8-1.6)

TOLERANCES UNLESS OTHERWISE SPECIFIED:	±0.2
10 > * > 10	±0.25
30 > * > 10	±0.3
100 > * > 30	±0.5
ANGLE	±5°

7-292253-4	5	4	3	4	1	4	14	28	31.8	25.2	31.0
7-292253-5	5	3	3	4	1	4	14	26	29.8	23.2	29.0
7-292253-6	5	3	3	3	1	3	13	24	27.8	21.2	27.0
7-292253-7	5	2	3	2	1	2	12	22	25.8	19.2	25.0
7-292253-8	5	2	3	2	1	1	11	20	23.8	17.2	23.0
7-292253-9	5	2	3	2	1	1	10	18	21.8	15.2	21.0
7-292253-10	5	2	2	2	1	1	9	16	19.8	13.2	19.0
7-292253-11	5	2	2	2	1	1	8	14	17.8	11.2	17.0
7-292253-12	5	2	2	2	1	1	7	12	15.8	9.2	15.0
7-292253-13	5	2	2	2	1	1	6	10	13.8	7.2	13.0
7-292253-14	5	2	2	2	1	1	5	8	11.8	5.2	11.0
7-292253-15	5	2	2	2	1	1	4	6	9.8	3.2	9.0
7-292253-16	5	2	2	2	1	1	3	4	7.8	1.2	7.0
7-292253-17	5	2	2	2	1	1	2	2	5.8	—	5.0
7-292253-18	5	2	2	2	1	1	1	1	3.8	—	3.0
7-292253-19	5	2	2	2	1	1	0	0	1.8	—	1.0
7-292253-20	5	2	2	2	1	1	0	0	0.8	—	0.0
7-292253-21	5	2	2	2	1	1	0	0	0.8	—	0.0
7-292253-22	5	2	2	2	1	1	0	0	0.8	—	0.0
7-292253-23	5	2	2	2	1	1	0	0	0.8	—	0.0
7-292253-24	5	2	2	2	1	1	0	0	0.8	—	0.0
7-292253-25	5	2	2	2	1	1	0	0	0.8	—	0.0
7-292253-26	5	2	2	2	1	1	0	0	0.8	—	0.0
7-292253-27	5	2	2	2	1	1	0	0	0.8	—	0.0
7-292253-28	5	2	2	2	1	1	0	0	0.8	—	0.0
7-292253-29	5	2	2	2	1	1	0	0	0.8	—	0.0
7-292253-30	5	2	2	2	1	1	0	0	0.8	—	0.0
7-292253-31	5	2	2	2	1	1	0	0	0.8	—	0.0
7-292253-32	5	2	2	2	1	1	0	0	0.8	—	0.0
7-292253-33	5	2	2	2	1	1	0	0	0.8	—	0.0
7-292253-34	5	2	2	2	1	1	0	0	0.8	—	0.0
7-292253-35	5	2	2	2	1	1	0	0	0.8	—	0.0
7-292253-36	5	2	2	2	1	1	0	0	0.8	—	0.0
7-292253-37	5	2	2	2	1	1	0	0	0.8	—	0.0
7-292253-38	5	2	2	2	1	1	0	0	0.8	—	0.0
7-292253-39	5	2	2	2	1	1	0	0	0.8	—	0.0
7-292253-40	5	2	2	2	1	1	0	0	0.8	—	0.0
7-292253-41	5	2	2	2	1	1	0	0	0.8	—	0.0
7-292253-42	5	2	2	2	1	1	0	0	0.8	—	0.0
7-292253-43	5	2	2	2	1	1	0	0	0.8	—	0.0
7-292253-44	5	2	2	2	1	1	0	0	0.8	—	0.0
7-292253-45	5	2	2	2	1	1	0	0	0.8	—	0.0
7-292253-46	5	2	2	2	1	1	0	0	0.8	—	0.0
7-292253-47	5	2	2	2	1	1	0	0	0.8	—	0.0
7-292253-48	5	2	2	2	1	1	0	0	0.8	—	0.0
7-292253-49	5	2	2	2	1	1	0	0	0.8	—	0.0
7-292253-50	5	2	2	2	1	1	0	0	0.8	—	0.0
7-292253-51	5	2	2	2	1	1	0	0	0.8	—	0.0
7-292253-52	5	2	2	2	1	1	0	0	0.8	—	0.0
7-292253-53	5	2	2	2	1	1	0	0	0.8	—	0.0
7-292253-54	5	2	2	2	1	1	0	0	0.8	—	0.0
7-292253-55	5	2	2	2	1	1	0	0	0.8	—	0.0
7-292253-56	5	2	2	2	1	1	0	0	0.8	—	0.0
7-292253-57	5	2	2	2	1	1	0	0	0.8	—	0.0
7-292253-58	5	2	2	2	1	1	0	0	0.8	—	0.0
7-292253-59	5	2	2	2	1	1	0	0	0.8	—	0.0
7-292253-60	5	2	2	2	1	1	0	0	0.8	—	0.0
7-292253-61	5	2	2	2	1	1	0	0	0.8	—	0.0
7-292253-62	5	2	2	2	1	1	0	0	0.8	—	0.0
7-292253-63	5	2	2	2	1	1	0	0	0.8	—	0.0
7-292253-64	5	2	2	2	1	1	0	0	0.8	—	0.0
7-292253-65	5	2	2	2	1	1	0	0	0.8	—	0.0
7-292253-66	5	2	2	2	1	1	0	0	0.8	—	0.0
7-292253-67	5	2	2	2	1	1	0	0	0.8	—	0.0
7-292253-68	5	2	2	2	1	1	0	0	0.8	—	0.0
7-292253-69	5	2	2	2	1	1	0	0	0.8	—	0.0
7-292253-70	5	2	2	2	1	1	0	0	0.8	—	0.0
7-292253-71	5	2	2	2	1	1	0	0	0.8	—	0.0
7-292253-72	5	2	2	2	1	1	0	0	0.8	—	0.0
7-292253-73	5	2	2	2	1	1	0	0	0.8	—	0.0
7-292253-74	5	2	2	2	1	1	0	0	0.8	—	0.0
7-292253-75	5	2	2	2	1	1	0	0	0.8	—	0.0
7-292253-76	5	2	2	2	1	1	0	0	0.8	—	0.0
7-292253-77	5	2	2	2	1	1	0	0	0.8	—	0.0
7-292253-78	5	2	2	2	1	1	0	0	0.8	—	0.0
7-292253-79	5	2	2	2	1	1	0	0	0.8	—	0.0
7-292253-80	5	2	2	2	1	1	0	0	0.8	—	0.0
7-292253-81	5	2	2	2	1	1	0	0	0.8	—	0.0
7-292253-82	5	2	2	2	1	1	0	0	0.8	—	0.0
7-292253-83	5	2	2	2	1	1	0	0	0.8	—	0.0
7-292253-84	5	2	2	2	1	1	0	0	0.8	—	0.0
7-292253-85	5	2	2	2	1	1	0	0	0.8	—	0.0
7-292253-86	5	2	2	2	1	1	0	0	0.8	—	0.0
7-292253-87	5	2	2	2	1	1	0	0	0.8	—	0.0
7-292253-88	5	2	2	2	1	1	0	0	0.8	—	0.0
7-292253-89	5	2	2	2	1	1	0	0	0.8	—	0.0
7-292253-90	5	2	2	2	1	1	0	0	0.8	—	0.0
7-292253-91	5	2	2	2	1	1	0	0	0.8	—	0.0
7-292253-92	5	2	2	2	1	1	0	0	0.8	—	0.0
7-292253-93	5	2	2	2	1	1	0	0	0.8	—	0.0
7-292253-94	5	2	2	2	1	1	0	0	0.8	—	0.0
7-292253-95	5	2	2	2	1	1	0	0	0.8	—	0.0
7-292253-96	5	2	2	2	1	1	0	0	0.8	—	0.0
7-292253-97	5	2	2	2	1	1	0	0	0.8	—	0.0
7-292253-98	5	2	2	2	1	1	0	0	0.8	—	0.0
7-292253-99	5	2	2	2	1	1	0	0	0.8	—	0.0
7-292253-100	5	2	2	2	1	1	0	0	0.8	—	0.0

THIS DRAWING IS A CONTROLLED DOCUMENT.

DMN S.XU 31JAN03

CHK S.YAO 31JAN03

APD T.SASAKI 31JAN03

PRODUCT SPEC 108-60016

APPLICATION SPEC

WEIGHT

CUSTOMER DRAWING

tyco Electronics Corporation SHANGHAI, CHINA

POST HEADER ASS'Y HORIZONTAL TYPE (AMP CT CONNECTOR 2mm PITCH)

DIMENSIONS: MM

TOLERANCES UNLESS OTHERWISE SPECIFIED:

0 PIC ±

1 PIC ±

2 PIC ±

3 PIC ±

4 PIC ±

ANGLES ±

FINISH SEE NOTE

SIZE DATE CODE DRAWING NO RESTRICTED TO

A3 00779 C=292253

SCALE 5:1 SHEET 1 OF 1 REV A