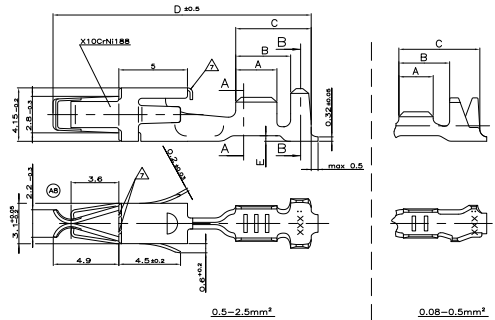
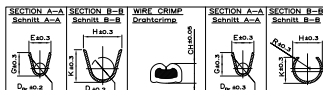
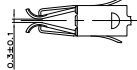


REMARKS
Bemerkungen

- CONTACT BODY PRE-SILVER PLATED MIN. 0.8µm CONTACT ZONE SELECTIVE PRE-SILVER PLATED MIN. 3µm
Kontaktkörper vorversilbert min. 0,8µm Kontaktzone selektiv vorversilbert min. 3µm
- CONTACT ZONE GOLD PLATED MIN. 0.8µm OVER MIN. 1.3µm NI-LAYER CRIMP AREA MIN. 1µm TIN PLATED OVER NI-LAYER
Kontaktzone vergoldet min. 0,8µm ueber min. 1,3µm Ni-Zwischenschicht Crimpbereich min. 1µm verzinkt ueber Ni-Zwischenschicht
- CANTILEVER SPRING INSIDE AND OUTSIDE 0.4-1.2µm Au
Ueberfeder innen und aussen 0,4-1,2µm Au
- CONTACT BODY CONTACT SPRING INSIDE AND CRIMP AREA MIN. 1µm TIN PLATED OVER NI-LAYER TOUCHING AREA TO CANTILEVER SPRING AND CONTACT SPRING OUTSIDE SELECTIVE 0.8µm Au OVER MIN. 1.3µm NI-LAYER
Kontaktkörper, Kontaktfeder innen und Crimpbereich min. 1µm verzinkt ueber Ni-Zwischenschicht, Anlöflaeche zur Ueberfeder und Kontaktfeder aussen selektiv 0,8µm vergoldet ueber min. 1,3µm Ni-Zwischenschicht
- CONTACT ZONE AND TOUCHING AREA TO CANTILEVER SPRING MIN. 0.8µm SELECTIVE Au PLATED OVER 1.3µm NI PLATED CRIMP AREA MIN. 1µm TIN PLATED OVER NI-LAYER
Kontaktzone und Anlöflaeche zur Ueberfeder min. 0,8µm vergoldet ueber min. 1,3µm Ni-Zwischenschicht Crimpbereich min. 1µm verzinkt ueber Ni-Zwischenschicht
- CONTACT BODY AND CRIMP AREA MIN. 1µm TIN PLATED OVER NI-LAYER TOUCHING AREA TO CANTILEVER SPRING SELECTIVE 0.8µm Au OVER MIN. 1.3µm NI-LAYER
Kontaktkörper und Crimpbereich min. 1µm verzinkt ueber Ni-Zwischenschicht Anlöflaeche zur Ueberfeder selektiv 0,8µm vergoldet ueber min. 1,3µm Ni-Zwischenschicht
- CONTACT OFF OPTIONAL
Abschnitt/Fietschnitt optional
- CONTACT RE-TREATED WITH LUBRICANT BARRIERTA DISPERSION
Kontakt mit Gleitmittel Barrierta Dispersion behandelt
- VARIANTS WITH GAP-SIZE 0.3±0.1mm
Varianten mit Gap-Size 0,3±0,1mm



UNSEALED
ungedichtet

ORDER-No. STRIP FORM Bestell-Nr.	REV	ORDER-No. Bestell-Nr.	MATERIAL Werkstoff	SURFACE Oberflaeche	DOB [mm]	SECTION A-A Schnitt A-A	SECTION B-B Schnitt B-B	WIRE CRIMP Drähterlime	SECTION A-A Schnitt A-A	SECTION B-B Schnitt B-B	MGC-Applicator	539635-1 mit Matrize 539674-2	3.0	4.0	5.5	18.8	0.4	9
928810-6	A	928810-4	CuSn4	vorversilbert min 1µm	0.5-1.0	E = 2.6 G = 1.9 D _h = 1.1	H = 3.6 K = 3.9 D = 1.8	0.5mm ² = 1.18 0.75mm ² = 1.27 1.0mm ² = 1.36	E = 2.8 G = 3.9 D _h = 1.7	H = 3.8 K = 4.3	MGC-Applicator	539635-1 mit Matrize 539674-2	3.0	4.0	5.5	18.8	0.4	9
928810-1	A	928810-2	CuSn4	vorversilbert min 1µm	>1.0-2.5	E = 3.6 G = 3.8 D _h = 1.8	H = 4.7 K = 4.9 D = 2.6	1.25mm ² = 1.44 1.5mm ² = 1.51 2.0mm ² = 1.64 2.5mm ² = 1.77	E = 2.8 G = 3.9 D _h = 1.7	H = 3.8 K = 4.3	MGC-Applicator	539635-1 mit Matrize 539674-2	3.3	4.3	5.8	18.8	0.4	9
963884-2	A	963885-2	CuSn4	vorversilbert min 1µm	>1.0-2.5	E = 3.6 G = 3.8 D _h = 1.8	H = 4.7 K = 4.9 D = 2.6	1.25mm ² = 1.44 1.5mm ² = 1.51 2.0mm ² = 1.64 2.5mm ² = 1.77	E = 2.8 G = 3.9 D _h = 1.7	H = 3.8 K = 4.3	MGC-Applicator	539635-1 mit Matrize 539674-2	3.3	4.3	5.8	18.8	0.4	9
2-927773-1	P	2-927781-1	CuSn4	vorversilbert min 1µm	>1.0-2.5	E = 3.6 G = 3.8 D _h = 1.8	H = 5.5 K = 5.8 D = 3.6	1.25mm ² = 1.44 1.5mm ² = 1.51 2.0mm ² = 1.64 2.5mm ² = 1.77	E = 2.8 G = 3.9 D _h = 1.7	H = 4.2 K = 5.2 r = 2.4	MGC-Applicator	539635-1 mit Matrize 539674-2	3.3	4.3	5.8	18.8	0.4	
1-927773-1	P	1-927781-1	CuFe2	vorversilbert min 1µm	>1.0-2.5	E = 3.6 G = 3.8 D _h = 1.8	H = 5.5 K = 5.8 D = 3.6	1.25mm ² = 1.44 1.5mm ² = 1.51 2.0mm ² = 1.64 2.5mm ² = 1.77	E = 2.8 G = 3.9 D _h = 1.7	H = 4.2 K = 5.2 r = 2.4	MGC-Applicator	539635-1 mit Matrize 539674-2	3.3	4.3	5.8	18.8	0.4	
927773-3	N	927781-3	CuSn4	vorversilbert min 1µm	>1.0-2.5	E = 3.6 G = 3.8 D _h = 1.8	H = 4.7 K = 4.9 D = 2.6	1.25mm ² = 1.44 1.5mm ² = 1.51 2.0mm ² = 1.64 2.5mm ² = 1.77	E = 2.8 G = 3.9 D _h = 1.7	H = 3.8 K = 4.3 R = 2.3	MGC-Applicator	539635-1 mit Matrize 539674-2	3.3	4.3	5.8	18.8	0.4	
927773-1	N	927781-1	CuFe2	vorversilbert min 1µm	>1.0-2.5	E = 3.6 G = 3.8 D _h = 1.8	H = 4.7 K = 4.9 D = 2.6	1.25mm ² = 1.44 1.5mm ² = 1.51 2.0mm ² = 1.64 2.5mm ² = 1.77	E = 2.8 G = 3.9 D _h = 1.7	H = 3.8 K = 4.3 R = 2.3	MGC-Applicator	539635-1 mit Matrize 539674-2	3.3	4.3	5.8	18.8	0.4	
2-927768-1	R	2-927777-1	CuSn4	vorversilbert min 1µm	>1.0-2.5	E = 3.6 G = 3.8 D _h = 1.8	H = 4.7 K = 4.9 D = 2.6	1.25mm ² = 1.44 1.5mm ² = 1.51 2.0mm ² = 1.64 2.5mm ² = 1.77	E = 2.8 G = 3.9 D _h = 1.7	H = 3.8 K = 4.3 R = 2.3	MGC-Applicator	539635-1 mit Matrize 539674-2	3.3	4.3	5.8	18.8	0.4	
1-927768-1	R	1-927777-1	CuFe2	vorversilbert min 1µm	>1.0-2.5	E = 3.6 G = 3.8 D _h = 1.8	H = 4.7 K = 4.9 D = 2.6	1.25mm ² = 1.44 1.5mm ² = 1.51 2.0mm ² = 1.64 2.5mm ² = 1.77	E = 2.8 G = 3.9 D _h = 1.7	H = 3.8 K = 4.3 R = 2.3	MGC-Applicator	539635-1 mit Matrize 539674-2	3.3	4.3	5.8	18.8	0.4	
927768-9	P	927779-9	CuSn4	vorversilbert min 1µm	>1.0-2.5	E = 3.6 G = 3.8 D _h = 1.8	H = 4.7 K = 4.9 D = 2.6	1.25mm ² = 1.44 1.5mm ² = 1.51 2.0mm ² = 1.64 2.5mm ² = 1.77	E = 2.8 G = 3.9 D _h = 1.7	H = 3.8 K = 4.3 R = 2.3	MGC-Applicator	539635-1 mit Matrize 539674-2	3.3	4.3	5.8	18.8	0.4	
927768-6	P	927777-6	CuSn4	vorversilbert min 1µm	>1.0-2.5	E = 3.6 G = 3.8 D _h = 1.8	H = 4.7 K = 4.9 D = 2.6	1.25mm ² = 1.44 1.5mm ² = 1.51 2.0mm ² = 1.64 2.5mm ² = 1.77	E = 2.8 G = 3.9 D _h = 1.7	H = 3.8 K = 4.3 R = 2.3	MGC-Applicator	539635-1 mit Matrize 539674-2	3.3	4.3	5.8	18.8	0.4	
927768-3	P	927777-3	CuFe2	vorversilbert min 1µm	>1.0-2.5	E = 3.6 G = 3.8 D _h = 1.8	H = 4.7 K = 4.9 D = 2.6	1.25mm ² = 1.44 1.5mm ² = 1.51 2.0mm ² = 1.64 2.5mm ² = 1.77	E = 2.8 G = 3.9 D _h = 1.7	H = 3.8 K = 4.3 R = 2.3	MGC-Applicator	539635-1 mit Matrize 539674-2	3.3	4.3	5.8	18.8	0.4	
927768-1	P	927777-1	CuFe2	vorversilbert min 1µm	>1.0-2.5	E = 3.6 G = 3.8 D _h = 1.8	H = 4.7 K = 4.9 D = 2.6	1.25mm ² = 1.44 1.5mm ² = 1.51 2.0mm ² = 1.64 2.5mm ² = 1.77	E = 2.8 G = 3.9 D _h = 1.7	H = 3.8 K = 4.3 R = 2.3	MGC-Applicator	539635-1 mit Matrize 539674-2	3.3	4.3	5.8	18.8	0.4	
2-927771-2	N	2-927779-2	CuSn4	vorversilbert min 1µm	0.5-1.0	E = 2.6 G = 2.8 D _h = 1.1	H = 3.6 K = 3.9 D = 1.8	0.5mm ² = 1.18 0.75mm ² = 1.27 1.0mm ² = 1.36	E = 2.2 G = 2.6 D _h = 1.2	H = 2.8 K = 3.4 R = 1.6	MGC-Applicator	539635-1 mit Matrize 539674-2	3	4	5.5	18.8	0.4	
1-927771-1	N	1-927779-1	CuFe2	vorversilbert min 1µm	0.5-1.0	E = 2.6 G = 2.8 D _h = 1.1	H = 3.6 K = 3.9 D = 1.8	0.5mm ² = 1.18 0.75mm ² = 1.27 1.0mm ² = 1.36	E = 2.2 G = 2.6 D _h = 1.2	H = 2.8 K = 3.4 R = 1.6	MGC-Applicator	539635-1 mit Matrize 539674-2	3	4	5.5	18.8	0.4	
927771-9	M	927779-9	CuSn4	vorversilbert min 1µm	0.5-1.0	E = 2.6 G = 2.8 D _h = 1.1	H = 3.6 K = 3.9 D = 1.8	0.5mm ² = 1.18 0.75mm ² = 1.27 1.0mm ² = 1.36	E = 2.2 G = 2.6 D _h = 1.2	H = 2.8 K = 3.4 R = 1.6	MGC-Applicator	539635-1 mit Matrize 539674-2	3	4	5.5	18.8	0.4	
927771-8	N	927779-8	CuSn4	vorversilbert min 1µm	0.5-1.0	E = 2.6 G = 2.8 D _h = 1.1	H = 3.6 K = 3.9 D = 1.8	0.5mm ² = 1.18 0.75mm ² = 1.27 1.0mm ² = 1.36	E = 2.2 G = 2.6 D _h = 1.2	H = 2.8 K = 3.4 R = 1.6	MGC-Applicator	539635-1 mit Matrize 539674-2	3	4	5.5	18.8	0.4	
927771-6	M	927779-6	CuSn4	vorversilbert min 1µm	0.5-1.0	E = 2.6 G = 2.8 D _h = 1.1	H = 3.6 K = 3.9 D = 1.8	0.5mm ² = 1.18 0.75mm ² = 1.27 1.0mm ² = 1.36	E = 2.2 G = 2.6 D _h = 1.2	H = 2.8 K = 3.4 R = 1.6	MGC-Applicator	539635-1 mit Matrize 539674-2	3	4	5.5	18.8	0.4	
927771-3	M	927779-3	CuFe2	vorversilbert min 1µm	0.5-1.0	E = 2.6 G = 2.8 D _h = 1.1	H = 3.6 K = 3.9 D = 1.8	0.5mm ² = 1.18 0.75mm ² = 1.27 1.0mm ² = 1.36	E = 2.2 G = 2.6 D _h = 1.2	H = 2.8 K = 3.4 R = 1.6	MGC-Applicator	539635-1 mit Matrize 539674-2	3	4	5.5	18.8	0.4	
927771-1	M	927779-1	CuFe2	vorversilbert min 1µm	0.5-1.0	E = 2.6 G = 2.8 D _h = 1.1	H = 3.6 K = 3.9 D = 1.8	0.5mm ² = 1.18 0.75mm ² = 1.27 1.0mm ² = 1.36	E = 2.2 G = 2.6 D _h = 1.2	H = 2.8 K = 3.4 R = 1.6	MGC-Applicator	539635-1 mit Matrize 539674-2	3	4	5.5	18.8	0.4	
2-927774-1	C	2-927776-1	CuSn4	vorversilbert min 1µm	0.2-0.5	E = 2.1 G = 2.1 D _h = 0.8	H = 2.7 K = 2.8 D = 1.4	0.2mm ² = 0.98 0.25mm ² = 1.00 0.35mm ² = 1.05 0.5mm ² = 1.12	E = 1.7 G = 2.1 D _h = 0.8	H = 2.2 K = 2.4 R = 1.3	MGC-Applicator	539635-1 mit Matrize 539757-2	2.5	3.5	5.6	18.8	0.4	
1-927774-1	C	1-927776-1	CuFe2	vorversilbert min 1µm	0.2-0.5	E = 2.1 G = 2.1 D _h = 0.8	H = 2.7 K = 2.8 D = 1.4	0.2mm ² = 0.98 0.25mm ² = 1.00 0.35mm ² = 1.05 0.5mm ² = 1.12	E = 1.7 G = 2.1 D _h = 0.8	H = 2.2 K = 2.4 R = 1.3	MGC-Applicator	539635-1 mit Matrize 539757-2	2.5	3.5	5.6	18.8	0.4	
927774-8	C	927776-8	CuSn4	vorversilbert min 1µm	0.2-0.5	E = 2.1 G = 2.1 D _h = 0.8	H = 2.7 K = 2.8 D = 1.4	0.2mm ² = 0.98 0.25mm ² = 1.00 0.35mm ² = 1.05 0.5mm ² = 1.12	E = 1.7 G = 2.1 D _h = 0.8	H = 2.2 K = 2.4 R = 1.3	MGC-Applicator	539635-1 mit Matrize 539757-2	2.5	3.5	5.6	18.8	0.4	
927774-6	B	927776-6	CuSn4	vorversilbert min 1µm	0.2-0.5	E = 2.1 G = 2.1 D _h = 0.8	H = 2.7 K = 2.8 D = 1.4	0.2mm ² = 0.98 0.25mm ² = 1.00 0.35mm ² = 1.05 0.5mm ² = 1.12	E = 1.7 G = 2.1 D _h = 0.8	H = 2.2 K = 2.4 R = 1.3	MGC-Applicator	539635-1 mit Matrize 539757-2	2.5	3.5	5.6	18.8	0.4	
927774-3	B	927776-3	CuFe2	vorversilbert min 1µm	0.2-0.5	E = 2.1 G = 2.1 D _h = 0.8	H = 2.7 K = 2.8 D = 1.4	0.2mm ² = 0.98 0.25mm ² = 1.00 0.35mm ² = 1.05 0.5mm ² = 1.12	E = 1.7 G = 2.1 D _h = 0.8	H = 2.2 K = 2.4 R = 1.3	MGC-Applicator	539635-1 mit Matrize 539757-2	2.5	3.5	5.6	18.8	0.4	
927774-1	B	927776-1	CuFe2	vorversilbert min 1µm	0.2-0.5	E = 2.1 G = 2.1 D _h = 0.8	H = 2.7 K = 2.8 D = 1.4	0.2mm ² = 0.98 0.25mm ² = 1.00 0.35mm ² = 1.05 0.5mm ² = 1.12	E = 1.7 G = 2.1 D _h = 0.8	H = 2.2 K = 2.4 R = 1.3	MGC-Applicator	539635-1 mit Matrize 539757-2	2.5	3.5	5.6	18.8	0.4	
2-963708-1	C	2-963777-1	CuSn4	vorversilbert min 1µm	0.08-0.2 (0.08-1.8±0.3)	E = 1.7 G = 1.7 D _h = 0.6	H = 3.1 K = 3.2 D = 1.6	0.08mm ² = 0.79 0.14mm ² = 0.83 0.22mm ² = 0.87	E = 1.5 G = 1.8 D _h = 0.6		MGC-Applicator	734414-1	2.5	3.7	5.9	18.8	0.4	
1-963708-1	C	1-963777-1	CuFe2	vorversilbert min 1µm	0.08-0.2 (0.08-1.8±0.3)	E = 1.7 G = 1.7 D _h = 0.6	H = 3.1 K = 3.2 D = 1.6	0.08mm ² = 0.79 0.14mm ² = 0.83 0.22mm ² = 0.87	E = 1.5 G = 1.8 D _h = 0.6		MGC-Applicator	734414-1	2.5	3.7	5.9	18.8	0.4	
963708-6	B	963777-6	CuSn4	vorversilbert min 1µm	0.08-0.2 (0.08-1.8±0.3)	E = 1.7 G = 1.7 D _h = 0.6	H = 3.1 K = 3.2 D = 1.6	0.08mm ² = 0.79 0.14mm ² = 0.83 0.22mm ² = 0.87	E = 1.5 G = 1.8 D _h = 0.6		MGC-Applicator	734414-1	2.5	3.7	5.9	18.8	0.4	
963708-3	B	963777-3	CuSn4	vorversilbert min 1µm	0.08-0.2 (0.08-1.8±0.3)	E = 1.7 G = 1.7 D _h = 0.6	H = 3.1 K = 3.2 D = 1.6	0.08mm ² = 0.79 0.14mm ² = 0.83 0.22mm ² = 0.87	E = 1.5 G = 1.8 D _h = 0.6		MGC-Applicator	734414-1	2.5	3.7	5.9	18.8	0.4	
963708-1	B	963777-1	CuFe2	vorversilbert min 1µm	0.08-0.2 (0.08-1.8±0.													

