

### Tools



**Crimping Tool**  
RSZ,HE-HN,D-HVT 1-1105850-8



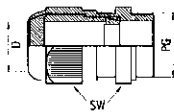
**Extraction Tool**  
AWZG-HN,D-RSZ 0-1105550-8 (for HN,D)



**Insertion Tool**  
1-1105606-8 (for HN,D and HE)

### Cable Fittings and Accessories

#### Gland Fitting, Plastic

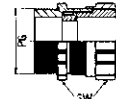


PG	D		SW
	min	max	
11	5	10	22
13.5	6	12	24
16	10	14	27
21	13	18	33
29	18	25	42
36	22	32	53
42	32	38	60

Part No.	Description	PG Size
1-1106005-7	HUT.11.P	11.0
2-1106005-7	HUT.13.P	13.5
3-1106005-7	HUT.16.P	16.0
4-1106005-7	HUT.21.P	21.0
5-1106005-7	HUT.29.P	29.0
6-1106005-7	HUT.36.P	36.0
7-1106005-7	HUT.42.P	42.0

Protection: IP 68

#### Gland Fitting, Brass



PG	D		SW
	min	max	
11	5	10	20
13.5	6	12	22
16	10	14	24
21	13	18	30
29	18	25	40
36	22	32	50
42	30	38	57

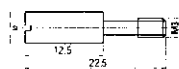
Part No.	Description	PG Size
1-1106006-9	HUT.11.MS	11.0
2-1106006-9	HUT.13.MS	13.5
3-1106006-9	HUT.16.MS	16.0
4-1106006-9	HUT.21.MS	21.0
5-1106006-9	HUT.29.MS	29.0
6-1106006-9	HUT.36.MS	36.0
7-1106006-9	HUT.42.MS	42.0

Protection: IP 68

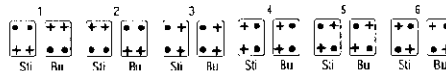
### Code Pin



Part No.  
1-1106100-1  
  
Description  
SPB-M3

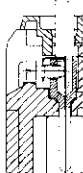


Coding with code pins  
For housings with 1 contact insert



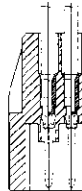
Guide pins and bushes on request

### Termination Information for Contact Inserts



#### Screw Terminal

- all versions with wire protection
- Wire cross section HA 2.5 mm<sup>2</sup>
- Wire cross section HE 2.5 mm<sup>2</sup>
- Wire cross section HSB 6 mm<sup>2</sup>



#### Crimp Terminal

- Strip length HN,D – 8 mm
- Strip length HE /HA – 7.5 mm



#### Spring Clamp Terminal

- Wire cross section max. 2.5 mm<sup>2</sup>
- Wire cross section with wire pin max. 1.5 mm<sup>2</sup>

### Crimp Contacts – Series HN,D



Pin	Wire Cross Section
1-1105050-1	0.14 – 0.37 mm <sup>2</sup>
2-1105050-1	0.50 mm <sup>2</sup>
3-1105050-1	0.75 – 1.00 mm <sup>2</sup>
4-1105050-1	1.50 mm <sup>2</sup>
5-1105050-1	2.50 mm <sup>2</sup>
Gold Plated	Wire Cross Section
1-1105050-2	0.14 – 0.37 mm <sup>2</sup>
2-1105050-2	0.50 mm <sup>2</sup>
3-1105050-2	0.75 – 1.00 mm <sup>2</sup>
4-1105050-2	1.50 mm <sup>2</sup>
5-1105050-2	2.50 mm <sup>2</sup>

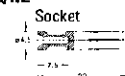


Socket	Wire Cross Section
1-1105051-1	0.14 – 0.37 mm <sup>2</sup>
2-1105051-1	0.50 mm <sup>2</sup>
3-1105051-1	0.75 – 1.00 mm <sup>2</sup>
4-1105051-1	1.50 mm <sup>2</sup>
5-1105051-1	2.50 mm <sup>2</sup>
Gold Plated	Wire Cross Section
1-1105051-2	0.14 – 0.37 mm <sup>2</sup>
2-1105051-2	0.50 mm <sup>2</sup>
3-1105051-2	0.75 – 1.00 mm <sup>2</sup>
4-1105051-2	1.50 mm <sup>2</sup>
5-1105051-2	2.50 mm <sup>2</sup>

### Crimp Contacts – Series HA/HE



Pin	Wire Cross Section
1-1105100-1	0.50 mm <sup>2</sup>
2-1105100-1	0.75 – 1.00 mm <sup>2</sup>
3-1105100-1	1.50 mm <sup>2</sup>
4-1105100-1	2.50 mm <sup>2</sup>
5-1105100-1	4.00 mm <sup>2</sup>
Gold Plated	Wire Cross Section
1-1105100-2	0.50 mm <sup>2</sup>
2-1105100-2	0.75 1.00 mm <sup>2</sup>
3-1105100-2	1.50 mm <sup>2</sup>
4-1105100-2	2.50 mm <sup>2</sup>
5-1105100-2	4.00 mm <sup>2</sup>



Socket	Wire Cross Section
1-1105101-1	0.50 mm <sup>2</sup>
2-1105101-1	0.75 – 1.00 mm <sup>2</sup>
3-1105101-1	1.50 mm <sup>2</sup>
4-1105101-1	2.50 mm <sup>2</sup>
5-1105101-1	4.00 mm <sup>2</sup>
Gold Plated	Wire Cross Section
1-1105101-2	0.50 mm <sup>2</sup>
2-1105101-2	0.75 1.00 mm <sup>2</sup>
3-1105101-2	1.50 mm <sup>2</sup>
4-1105101-2	2.50 mm <sup>2</sup>
5-1105101-2	4.00 mm <sup>2</sup>