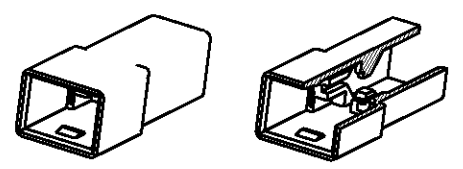
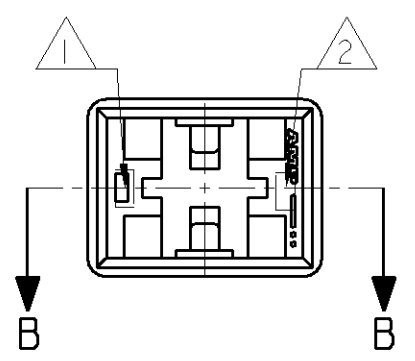


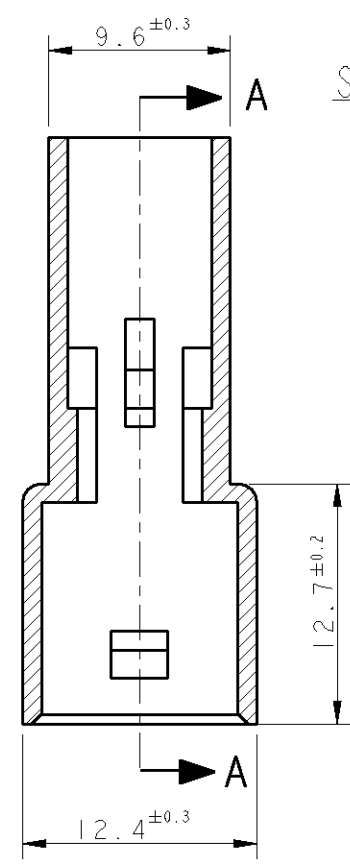
THIS DRAWING IS UNPUBLISHED. QUESTO DISEGNO NON DEVE ESSERE DIVULGATO O RIPRODOTTO. RELEASED FOR PUBLICATION. E' CONSENTITA LA DIVULGAZIONE. .19  
 © COPYRIGHT 19 BY AMP INCORPORATED. ALL RIGHTS RESERVED. TUTTI I DIRITTI SONO RISERVATI.

LOC	DIST	REVISIONS REVISIONI			
P	LTR REV	DESCRIPTION DESCRIZIONE	DATE DATA	DWN DIS.	APVD APP.
	AB	REVISED PER ET00-0282-97	07/06/97	A.B.	C.T.
	AC	REVISED PER ET00-0319-97	05/09/97	A.F.	C.T.
	AC1	REDRAWN BY CAD PER ET00-0195-98	20/07/98	F.B.	C.T.
	AD	OBS. DASH 1-.0, ET00-0065-04	24/03/04	H.Y.	C.T.
	AD1	ADDED P/N, ET00-0220-04	05/11/04	H.Y.	G.T.
	AD2	RELEASED 3-.0, ET00-0045-05	23/02/05	H.Y.	G.T.

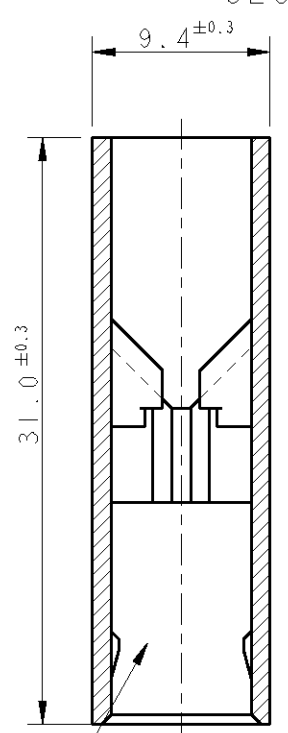


SCALE 1:1

SEZIONE A-A  
SECTION A-A



SEZIONE B-B  
SECTION B-B



TIPICA CAVITA' PER TERMINALE AMP FASTIN-FASTON SR.6.35mm. (TYPICAL CAVITY FOR AMP FASTIN-FASTON .250 SR.)

- 1 NUMERO DI IMPRONTA STAMPO (MOULD CAVITY IDENTIFICATION NO.)
- 2 MARCHIO DI FABBRICA AMP (AMP TRADE MARK)
- 4 AIR TIGHT PACKAGED NON PRODOTTO DA AMP ITALIA (NOT PRODUCED BY AMP ITALY)
- 5 NON DISPONIBILE DA AMP ITALIA (NO MORE AVAILABLE FROM AMP ITALY)
- 6 PRODUCT IN ACCORDANCE TO IEC 60335-1 NORM.

NOTE	COLORE (COLOUR)	MATERIALE (MATERIAL)	NUMERO (PART NUMBER)	REV		
5, 6	NATURALE (NATURAL)	PA 6 UNFILLED	3-180916-0	AD		
4, 5	ARANCIO (ORANGE)	PA 6.6 (PA 6.6 UNFILLED)	2-180916-9	AC		
	VIOLETTO (VIOLET)		2-180916-8	AC		
	GRIGIO (GRAY)		2-180916-7	AC		
	MARRONE (BROWN)		2-180916-6	AC		
	NERO (BLACK)		2-180916-5	AC		
	GIALLO (YELLOW)		2-180916-4	AC		
	BLU (BLUE)		2-180916-3	AC		
	VERDE (GREEN)		2-180916-2	AC		
	ROSSO (RED)		2-180916-1	AC		
	NATURALE (NATURAL)		2-180916-0	AC		
	5		ARANCIO (ORANGE)	PA 6.6 (PA 6.6 UNFILLED)	180916-9	AC
	5		VIOLETTO (VIOLET)		180916-8	AC
5	GRIGIO (GRAY)	180916-7	AC			
5	NERO (BLACK)	180916-5	AC			
5	ROSSO (RED)	180916-1	AC			
5	NATURALE (NATURAL)	180916-0	AC			

THIS DRAWING IS A CONTROLLED DOCUMENT FOR AMP INCORPORATED. IT IS SUBJECT TO CHANGE AND THE CONTROLLING ENGINEERING ORGANIZATION SHOULD BE CONTACTED FOR THE LATEST REVISION. QUESTO DISEGNO E' UN DOCUMENTO DI PROPRIETA' E RESPONSABILITA' DELL'AMP INCORPORATED SOGGETTO A VARIAZIONI. PER OTTENERE L'ULTIMA REVISIONE DEL DISEGNO CONTATTARE L'UFFICIO TECNICO RESPONSABILE.		DWN /DIS. 22JUN98 <b>F. BORIN</b> CHK /CONT. 22JUN98 <b>C. TARTARI</b> APVD /APP. -	<b>AMP</b> AMP Italia S.p.A. Collegno, C.so F.lli Cervi 15
DIMENSIONS: DIMENSIONI: mm 	TOLERANCES UNLESS OTHERWISE SPECIFIED: TOLLERANZE: SE NON DIVERSAMENTE SPECIFICATO 0 PLC /DEC ± 1 PLC /DEC ± 2 PLC /DEC ± 3 PLC /DEC ± 4 PLC /DEC ± ANGLES /ANGOLI ± 2°	PRODUCT SPEC SPEC DI PRODOTTO 108-20020 APPLICATION SPEC SPEC DI APPLICAZIONE - WEIGHT PESO -	NAME NOME FASTIN-FASTON™ CONNECTOR .250 SRS TAB HOUSING, POS. <b>NOT the LATEST REVISION</b> SIZE A3 CAGE CODE 00779 DRAWING NO. C=180916 RESTRICTED TO
MATERIAL MATERIALE SEE TABLE	FINISH FINITURA -	CUSTOMER DRAWING DISEGNO PER CLIENTE SOLO PER RIFERIMENTO	SCALE SCALA 2.5:1 SHEET FOGLIO 1 OF 01 REV AD2