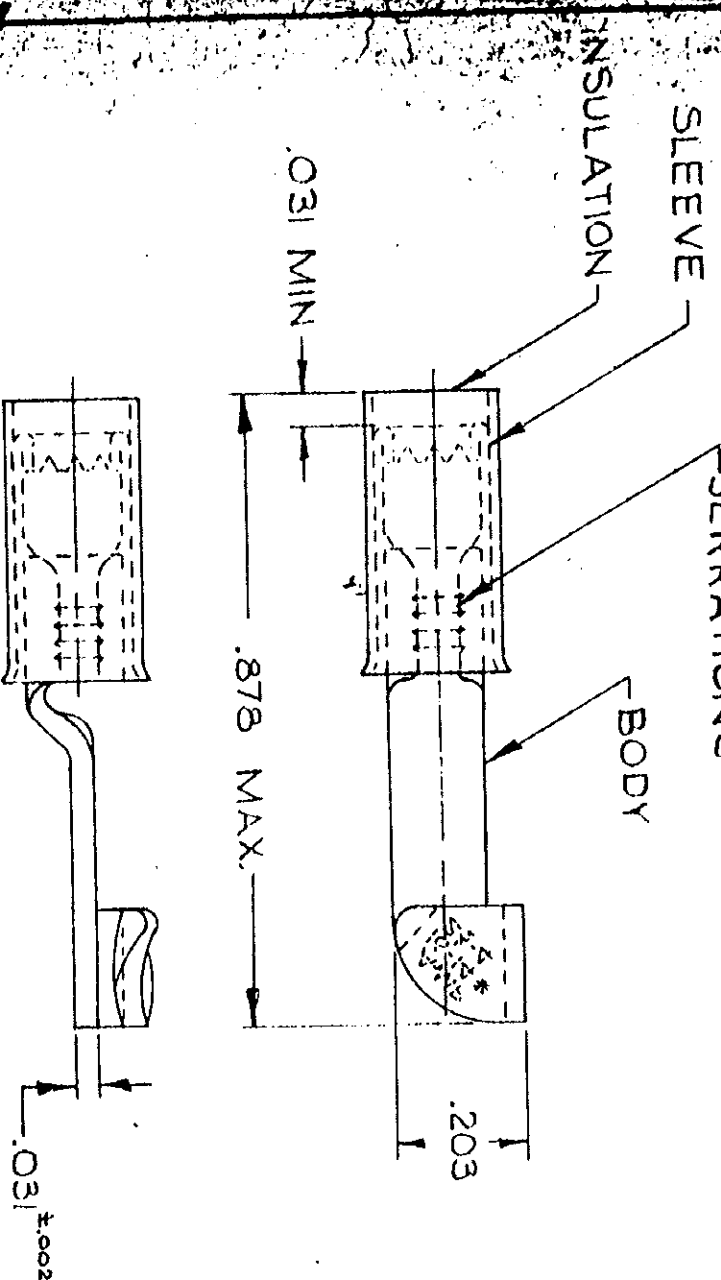


ALL RIGHTS RESERVED. AMP INCORPORATED, ALL PATENTS PENDING.

REVISIONS		DESCRIPTION	DATE	APPROVED
C	REBORN; REV & ADDED TAPE NO.	M	3-17-70	<i>[Signature]</i>
D	INACTIVATED 2--1 P. 9261	PMF	12-17-82	<i>[Signature]</i>
E	OBS. 2--1 REV. G 2588	BT	10-9-87	PMF
F	REV/0720-5040-93	BT	3-31-93	TO/2782



FOR .105 TO .150 WIRE INSULATION DIA

100	LOOSE PC BOX SPL	8-320566-5
50	L005E PC BOX	8-320566-2
1	320566 ON TAPE	OBSOLETE
1	WIRE TERMINAL	320566

QTY	DESCRIPTION	PART NO
1	WIRE TERMINAL	320566

UNLESS OTHERWISE SPECIFIED DIMENSIONS ARE IN INCHES TOLERANCES ON DECIMALS ±.008 ANGLES ±.50

MATERIAL

CONTRACT NO. #

DR. *[Signature]* 3-17-70

APPD *[Signature]* 3-17-70

REL. *[Signature]* 3-17-70

DSGN APPD *[Signature]* 3-17-70

OTHER APPD

NAME: WIRE TERMINAL

PIDG - KNIFE-DISCONNECT

WIRE SIZE: #16-14

AMP (INCORPORATED) PENNSYLVANIA

SEE TABLE

SIZE: A

MODE IDENT NO: 00779

NUMBER: 320566

SHEET 1 OF 1

CUSTOMER DRAWING